

FORT WORTH®

Oct 27, 2023

-

Nov 4, 2023



© Noble
Photographic
Editorial

2023

WORLD

CHAMPIONSHIP APPALOOSA SHOW

PREMIUM BOOK



World Show Deadlines

ONLINE ENTRIES DEADLINE

10/04/23

HARD COPY ENTRIES STALLS DEADLINE

09/29/23

STALL RESERVATION DEADLINE

09/29/23

RV RESERVATION DEADLINE

09/29/23

PRE-BEDDING DEADLINE

10/05/23

Horse Trailers • Stock Trailers • Flatbed & Utility • Used Trailers
Car Haulers • Toy Haulers • Cargo Haulers

TWIN CITIES SOUTH TRAILERS



The Official Trailer and Dealer of
THE APPALOOSA HORSE CLUB

WE PROMISE YOU WILL SAVE BIG! WE NEED CLEAN TRADES!

Long term, low fixed-rate financing too!

Twin Cities South Trailers is a long-time supporter of the ApHC.



When it's time for your new or used trailer, please see us first. You'll be glad you did!

Gary and Tammy Raak
8448 HWY 377 • Pilot Point, TX • (855)585-6548
TwinCitiesSouthTrailers.com

TABLE OF CONTENTS

ADMINISTRATIVE CHARGE	16	INHUMANE TREATMENT	26
AWARDS	36	INSPECTION STATION	22
BARN RULES	19	LAMENESS	26
BEDDING	32	LIMITED OPEN CLASS RULES	49
CERTIFICATE OF REGISTRATION	18	NSBA DUAL-APPROVED CLASSES	45, 54
CHECK-IN PROCEDURES	16	NON-QUALIFYING CLASSES.....	10
CONTACT INFORMATION	54	OFFICIAL VETERINARIAN.....	22, 39
COMMERCIAL EXHIBIT INFORMATION	34	OWNERSHIP & MEMBERSHIP	12
CLASS PATTERNS	24	PADDOCK PROCEDURE.....	24
CLASS PROCEDURES.....	24	PARKING	34
DISQUALIFICATION.....	24,26	PAYMENT PROCEDURES.....	16
DOGS/PETS.....	36	PHOTOGRAPHER	22, 31
DRUG TESTING.....	22	PRE-ENTRY DEADLINE.....	14, 51
EQUIPMENT JUDGE.....	26	RECREATIONAL VEHICLES	34
ELIGIBILITY	10	TRANSFER OF OWNERSHIP	12
ELIMINATION, FINALS AND SCORING	36	SCRATCHES/REFUNDS	20
ENTRIES	14	SHOW SCHEDULE.....	56
ENTRY AGREEMENT	8	SHOW OFFICIALS.....	55
EWD SHOW.....	49	SHOW OFFICE.....	16
EXHIBITOR NUMBERS	18	STALL INFORMATION.....	28
EXHIBITOR/JUDGE CONDUCT.....	12	STALL MAT RENTAL.....	27
FARRIER.....	34	SUBSTITUTIONS	20, 53
FEED	32	TEAM ROPING	47, 51
FORFEITURE OF STALL LOCATION.....	32	TWO-YEAR-OLD ELIGIBILITY	49
GENERAL RULES & REGULATIONS.....	8	VIDEOGRAPHER.....	33
GOLF CARTS.....	11, 32	WALK/TROT ELIGIBILITY	49
HEALTH INSPECTION	18	WINDEMERE HUNTER CLASSIC.....	9, 47
HERITAGE	45	WORKING ORDER	24
HOTELS.....	48	WRMC MAP	21
		YEARLING LONGE LINE	36

CELEBRATE WHAT MATTERS



OFFICIAL
SILVERSMITHS



MONTANA[®]
SILVERSMITHS

BRAND OF CHAMPIONS[®]

www.montanasilversmiths.com

Follow us     

Personal Safety & Security Reminders



The ApHC wants to remind everyone to have a safe and enjoyable show.

Many of you will be traveling long distances through unfamiliar places, and it pays to think ahead. The following are things that you may already know, but now is a great time to read over them again and discuss safety with your family. It is also a great time to check the security measures you use to protect your belongings. Do what you can now to make yourself and your family an unattractive target to thieves and criminals.

Be aware of your surroundings. If something doesn't look or feel right, trust your instincts.

Park and walk only in well-lit areas. Travel in pairs, especially at night.

Children should be with a responsible adult at all times.

Look for a hotel with 24-hour on-site security.

Don't carry large amounts of cash. Think about replaceable travelers' checks or debit cards with fraud protection instead. Keep a list of credit card and bank contact numbers in a separate place that you can use to cancel cards or accounts if necessary. Have a back up plan in case your purse or wallet is stolen.

Purses, wallets, GPS devices, briefcases, bags, laptop computers or anything that looks valuable should never be left in a vehicle or unattended area.

Spare wheels, tires and even whole trailers can be targeted by thieves. Locking the hitch on your trailer and the spare on your truck will make you a less attractive target.

Lock your tack stall. Even if you're only going around the corner or into another stall, always lock up.

**Label your cell phone, camera, cases, tack carriers, etc.
Found items are returned more quickly if the owner can be easily identified.**

If you can, leave your dogs at home. If you bring a dog, keep them on a leash or penned up. Please make sure they are wearing tags with a local or cell number where you can be reached.

Put a label on your horse's stall with your cell, hotel, and local contact information so that you can be reached in the case of a horse emergency.

If you see a horse in distress and the owner is not around, contact the show office or the stall office. The Stall Office is open 24 hours a day.

Today's



Sponsored by **COFFEE & YOU**

Watch for the ApHC Hospitality Golf Cart to visit your barn each morning bringing fresh coffee & pastries

GOOD MOOD

Interested in sponsoring a day?
Please contact Amber Miller
at (208) 882-5578 ext. 273



K H

KELLY HERD

FINE JEWELRY SINCE 1983



APHC 20% DISCOUNT
Use code APHC20 at checkout.

SHOP ONLINE
www.kellyherdjewelry.com

CONTACT US
1-866-617-4653
info@kellyherdjewelry.com

GENERAL RULES & REGULATIONS

The World Show will be run in compliance with the 2023 Official Handbook of the Appaloosa Horse Club, except as otherwise stated in the following pages.

The management reserves the right to decline any entry before or during the show without liability for compensation for reasons such as non-sufficient fund checks, stopped payment on checks, poor sportsmanship, inhumane treatment of horses, or harassment of judges, officials, secretaries, ring stewards and/or any other employee of the show.

The show management reserves the right to change the show schedule at any time.

All horses entered in the show must be registered with the ApHC, be eligible to compete and must be properly stalled.

All horses not officially entered in the show and assisting in, but not limited to, cutting or team roping must be registered with the ApHC and must purchase a stall. These horses must also be issued a back number and pass through the inspection station in order to assist in the show. Exhibitors will be disqualified for using a horse to assist in any class that is not registered with the ApHC.

All horses on the show grounds must be stalled and must show current health papers and proof of negative Coggins in the show office. See HEALTH INSPECTION for additional details.

All entrants must provide information on lodging accommodations in Fort Worth in order to pick up the exhibitor packet for each horse. Please see SHOW OFFICE for more details.

ENTRY AGREEMENT

Release, Assumption of Risk,

Waiver and Indemnification

This statement waives important legal rights. Read it carefully before signing any entry forms and/or before participating in any class as an owner and any of his/her representatives, authorized agent, trainer, lessee, rider, driver and/or handler.

I AGREE in consideration for my participation in the World Championship Appaloosa Show ("Competition") to the following:

I AGREE that I choose to participate voluntarily in the Competition with my horse(s), as a rider, driver, handler, lessee, owner, agent, coach, trainer, or as parent or

guardian of a youth exhibitor. I am fully aware and acknowledge that horse sports and the Competition involve inherent dangerous risks of accident, loss, and serious bodily injury including broken bones, head injuries, trauma, pain, suffering, or death ("Harm").

I AGREE to release the Appaloosa Horse Club, ("ApHC"), the Competition, officials, officers, directors, employees, specialty associations, independent contractors, agents, personnel, volunteers, the Will Rogers Memorial Center, the Fort Worth Convention & Visitors Bureau, the City of Fort Worth, EMTs, trade show vendors, sponsors and/or other sponsoring organizations if any, (collectively the "Released Parties"), from all claims for money damages or otherwise for any Harm to me, my horse(s) and/or my property and for any Harm caused by me, my horse(s) and/or my property to others, even if the Harm resulted, directly or indirectly, from the negligence of the Appaloosa Horse Club, any of the Released Parties and/or the Competition.

I AGREE to assume all liability and responsibility for any accidents, injury or damages sustained or caused by myself, my helpers, my stock or my equipment and I AGREE to expressly assume all risks of Harm to me or my horse(s), including Harm resulting from the negligence of the ApHC, the Released Parties or the Competition.

I AGREE to indemnify (that is, to pay any losses, damages, or costs incurred by) the ApHC, the Released Parties and the Competition and to hold them harmless with respect to claims for Harm to me or my horse(s), and for the claims, demands, cause of accident, cost of charges and expenses of every kind and nature which may be incurred by reason of any accident, injury, or damage to person or property caused by ownerships, exhibition, or custody or control of any animal exhibited, made by others for any Harm caused by me, my horse(s) and/ or my property at the Competition.

I have read the Appaloosa Horse Club rules about protective equipment, including protective headgear, and I understand that I am entitled to wear protective equipment without penalty, and I acknowledge that the Appaloosa Horse Club, strongly encourages me to do so while WARNING that no protective equipment can guard against all injuries. I further understand that any minor child entered in the Competition is required to wear protective headgear during games classes.

I AGREE that participation includes possible exposure to illness from infectious diseases including but not limited to COVID-19. While particular rules and personal

12th ANNUAL

Windemere HUNTER CLASSIC

For information on how
you can be an entry,
please call
Teresa Pennington at
904.710.5807

Win

Cash & Prizes

at the

2023 World Championship
Appaloosa Show

Proudly
Sponsored
by

Windemere
Equestrian Center
Jacksonville, Florida

Larry Williams
PHOTOGRAPHY
Editorial

discipline may reduce this risk, the risk of serious illness and death does exist. I knowingly and freely assume all such risks related to illness and infectious diseases, including COVID-19, even if arising from the negligence or fault of the ApHC, the Released Parties and/or the Competition; and I hereby knowingly assume the risk of injury, harm and loss associated with the Competition, including any injury, harm and loss caused by the negligence, fault or conduct of any kind on the part of the ApHC, the Released Parties and/or the Competition.

I AGREE to hereby release and forever discharge the ApHC, the Released Parties and/or the Competition from any claim whatsoever which arises or may hereafter arise on account of any first aid, treatment, or service rendered in connection with my participation in the Competition.

I AGREE to furnish all health documents required by the Competition for each horse entered, upon request of the show management and understand that any horse that develops a contagious disease during the show will be immediately quarantined and/or removed from the grounds under the instructions of the Show Veterinarian or State Veterinarian.

I AGREE that the ApHC has the sole right to control, sell, rent, supervise or give away (or to assign others the right to do so) the exclusive rights to photograph, broadcast, televise, reproduce, transmit and disseminate all or part of this event. I authorize the ApHC to make use of any photographs, films or video taken of the horses and exhibitors entered, while on the grounds or in transit between the stabling facility and the event site, in any way they see fit in the promotion of the Competition or the ApHC. No such advertising or promotional rights shall include the right to use a participant's name or likeness in a manner that implies endorsement of any company, product category or service.

If I am a parent or guardian of a youth exhibitor, I consent to the child's participation and AGREE to all of the above provisions and AGREE to assume all of the obligations of this Release on the child's behalf.

I AGREE that the "ApHC" and "Competition" as used above includes all of the officials, officers, directors, employees, agents, personnel, volunteers and affiliated organizations.

I represent that I have the requisite training, coaching and abilities to safely compete in this competition.

By signing the entry blank, I AGREE to be bound by all

applicable Appaloosa Horse Club rules and all terms and provisions of the ENTRY AGREEMENT. In the event of failure to sign an entry form, the first entry in a class will be deemed acceptance of said rules.

ELIGIBILITY

A horse will be eligible to compete in each open class in which it has earned the minimum number of points prescribed for that class in the 2023 *Official Handbook of the ApHC*, if it has been nominated to participate in that class in accordance with the regional club qualifying system, if it was a 2022 World Show champion in that class, and/or if it was a 2023 National Show champion in that class.

Non-pros will be eligible to compete in each non-pro class, except those listed under "Non-Qualifying Classes", if they have earned the minimum number of points prescribed for that class in the 2023 *Official Handbook of the ApHC*, if they have been nominated to participate in that class in accordance with the regional club qualifying system, if the non-pro was a 2022 World Show champion in that class, and/or if the non-pro was a 2023 National Show champion in that class.

Complete rules regarding World Show qualifying in open and non-pro classes are contained in the *Official Handbook of the ApHC*.

All points considered for eligibility in this show must have been earned between September 1, 2022 and August 31, 2023 at ApHC-approved shows and only official ApHC records will be used as the basis for determining eligibility.

ApHC national points will not be earned by participation in the World Championship Show.

NON-QUALIFYING CLASSES

Weanling halter classes, ladies' and men's western pleasure, two-year-old western pleasure, two-year-old hunter under saddle, freestyle reining, ranch reining, ranch conformation**, yearling in-hand trail, open green classes (trail, western riding, western pleasure, hunter under saddle, ranch riding, ranch reining, ranch trail, ranch rail pleasure), yearling hunter in hand (fillies, geldings, and colts), yearling longline (western and hunter), foundation pedigree designation halter (mares, stallions, geldings), weanlings and yearlings shown in non-pro hunter in hand classes (mares, stallions, geldings), non-pro yearling longline (western and hunter), non-pro walk/trot classes, non-pro ranch classes (riding, trail, rail pleasure, reining, conformation**), non-pro novice games classes, non-pro boxing, non-pro bareback horsemanship, non-pro novice cutting, non-pro performance halter* (mares, stallions,

2023 World Championship Appaloosa Show



Club Car[®]

Golf Car Rentals Available

Don't wait! Call or reserve online!

johnny@metrogolfcars.com
metrogolfcars.com

817.921.5491 x101

geldings), and non-pro yearling in-hand trail, do not require qualification.

**Horses shown in non-pro performance halter must have a racing ROM or a ROM in an open, non-pro or youth performance class.*

***Horses are eligible to show in open ranch conformation if they have shown in at least one ranch class at the World Show. Horses are eligible to show in non-pro ranch conformation if they have shown in at least one non-pro ranch class at the World Show.*

In addition, the ApHC board of directors passed a motion on 8/30/23 that changes the following classes to non-qualifying classes for the 2023 World Show: non-pro cutting, non-pro pleasure driving, pleasure driving, junior cutting, senior cutting, men's heritage, ladies' heritage, rope race.

EXHIBITOR/JUDGE CONDUCT

ApHC judges shall not have any social contact with exhibitors, owners, trainers or agents 48 hours prior to, during, and for 48 hours after completion of judging of any ApHC event. This includes personal contact, phone calls, text messages and all social medias. If approached by exhibitors, owners, trainers, or agents before, during, or after an approved or sponsored ApHC show, the judge should be polite, professional, and courteous but should make every effort not to engage in social activities.

OWNERSHIP & MEMBERSHIP

Any horse exhibited at the show must be registered in the owner's name at the time of showing and must be entered assuch.

All owners and exhibitors of horses being exhibited in open and/or non-pro classes at the show must be current members in good standing with the ApHC. If purchase of an ApHC membership is necessary, membership fees MUST accompany the entries or memberships can be purchased online at www.appaloosa.com. An ApHC membership application is available at www.appaloosa.com. Youth may obtain a youth membership to fulfill the ApHC membership requirement.

All owners and exhibitors of horses being exhibited in open and/or non-pro classes at the show must also be a current-year member of an ApHC-affiliated regional club and may be required to show proof of such membership.

In order to compete in non-pro classes, the non-pro or member of their immediate family (per rule 900.J) must

own or co-own the horse as evidenced by ApHC records prior to the first day of the show. Therefore, all transfers must be completed by the close of business on October 26, 2023. The competing non-pro must be a current ApHC member, enrolled in the non-pro program and must meet all eligibility requirements as stipulated in the *Official Handbook* of the ApHC. **Unrelated non-pros may not show the same horse in non-pro division classes at the World or National Championship Appaloosa Shows.**

NOTE: The original Certificate of Registration must be presented in the show office at the show to obtain your back numbers.

TRANSFER OF OWNERSHIP

ONE transfer of ownership per horse may take place during the World Championship Show. In order for the transfer to occur during the show, a properly completed transfer form (with *original* signatures) must be submitted to the show office along with the ORIGINAL certificate of registration. Additionally, a rush fee of \$200 must be paid in addition to the transfer fee and any needed membership fees. The transfer will be processed in the show office for purposes of showing at the World Show and new owners will be recognized during the show should the horse place in any open class in which the horse is qualified and eligible to be shown. Complimentary lifetime rushes are not available for this purpose.

In order for the horse to be shown in any non-pro class, the non-pro exhibitor must already be qualified or otherwise eligible to show in the class. The transfer will be processed in the show office for purposes of showing at the World Show. Unrelated non-pros shall not show the same horse in non-pro classes at the World Show regardless of transfer status.

Following the show, the transfer of ownership will be properly completed as a rush transfer in the ApHC headquarters office and the certificate of registration will be mailed to the new owner.

ENTRIES

Entries must be submitted electronically via the ApHC on-line entry program or in writing. If submitted in writing, entries must be made on printed entry forms furnished by the ApHC (copies of printed forms accepted), signed by the proper parties and accompanied by all entry fees, equipment charges, cattle charges and a completed W-9 form for the first listed owner on the Certificate of Registration.

IT IS YOU



*that has been the important
part of our story*

WWW.HARRISLEATHER.COM 336.874.2100 / 336.874.2194 / 336.874.2196

HAWKINS DESIGN 404.538.7412



Entries will not be accepted by telephone.

Exhibitors are responsible for any errors on their entry forms. Entries lacking sufficient information or not accompanied by all required fees will not be accepted.

Changes to entries must be submitted in writing. Changes to entries will not be accepted by telephone.

The ApHC is not responsible for lost or late entries or for entries faxed or emailed. **The ApHC recommends using the online entry system or certified/registered mail as these options provide confirmation that your entries were received.** Exhibitors are responsible for ensuring that faxed or emailed entries are received by the ApHC.

The IRS requires the ApHC to obtain the correct taxpayer identification number (TIN) for persons for whom we have to file an information return (i.e. 1099 Miscellaneous for premium payback). This form must be completed by the owner or in the case of multiple owners, by the first listed current owner. If the correct TIN is not provided, subsequent payments can be subject to backup withholding per IRS regulations. **Premium checks and/or award checks will not be issued until the ApHC has a W-9 on file for all persons receiving these checks.** You are required to complete a W-9 with the appropriate certifications and submit it with your entry. This information must be provided to the ApHC regardless of the age of the owner. Your exhibitor packet will be held if this form is not submitted with your entry. A W-9 form is available on the ApHC web site.

The social security number listed on the W-9 should be that of the owner, or in the case of multiple owners, that of the first listed current owner on the Certificate of Registration. No other social security number is acceptable. International residents must complete IRS Form #W-8ECI or the ApHC must deduct 30% of any monies earned.

Social security numbers must be provided for individuals. Taxpayer identification numbers will not be accepted in lieu of a social security number for individual owners. This information must be provided to the ApHC regardless of the age of the owner.

Entries sent by Federal Express, UPS, certified mail, return receipt or Express mail should be mailed to:

Appaloosa Horse Club
World Show
2720 W Pullman Road
Moscow, Idaho 83843

Entries may be faxed to:
(208) 882-8150.

Entries may be emailed to:
showsecretary@appaloosa.com.

Exhibitors are responsible for verifying that their entries have been received in the ApHC office. If you fax or email entries or stall reservations, DO NOT send originals in the mail as this will likely result in duplicate charges if paying by credit card. If you fax or email entries or stall reservations, please allow four (4) hours of processing time before calling the ApHC to determine if your entries and/or stall reservations have been received. **Faxed copies of checks are not considered payment and entries and/or stall reservations will not be accepted until actual payment is received.** Appaloosa Horse Club switchboard hours are Monday through Friday, 8 a.m. – 4 p.m. PT.

Declined credit cards may result in you paying post-entry prices. If you are using a debit or credit card, please pre-authorize amounts over \$200 (or amounts in excess of your daily limit) with the card company or your bank to avoid processing delays and late fees.

PRE-ENTRY DEADLINE

September 29: (entries submitted in writing using official entry forms must be received in the ApHC office)

October 4: (entries submitted using the online entry system must be entered and paid for by 11:59 p.m. PT)

All entries must be in the ApHC office by the appropriate pre-entry deadline listed above in order to receive pre-entry prices.

Entries will be accepted after this date/time with a post-entry fee of \$40/class. **NO EXCEPTIONS WILL BE MADE.** Post-entry fees are not assessed for NSBA entries, equipment charges or cattle fees in working cow horse, boxing or roping. **Post entry fees WILL BE assessed to cattle fees in cutting classes and post entries in cutting will not work fresh cattle.** Post entries must be made by 6:00 p.m. the day prior to when the class to be entered is scheduled **(except in some limited open classes in which the deadline may be 2 days prior to when the class to be entered is scheduled – see LIMITED OPEN in this premium book for complete information).**

Entries using the on-line entry system that are not processed by October 9 or hard copy entries not received in the ApHC office by October 4 must be taken to the show, not mailed to the ApHC. Post entry fees will be



Appaloosa ★ PRO COLLECTION by Tioga Territory



www.tiogaterritory.com
1-800-279-3052



502 East Main St.
Chanute, KS 66720

charged to these entries if received after the pre-entry deadline.

The World Show program will list all entries that were received by the published pre-entry deadlines. No supplement will be printed.

ADMINISTRATIVE CHARGE

There will be a \$50 one-time administrative charge, which includes drug-testing charges for each horse entered in the World Show. This fee is assessed only one time per horse regardless of the number of classes in which the horse is entered. For example, if a horse is entered in non-pro and open classes, only \$50 is due. For further clarification, see DRUG TESTING.

Horses entered in specialty association classes (Appaloosa Halter Futurity, Appaloosa Ranch Horse Association, Appaloosa Reining Horse Association, Appaloosa Pleasure Horse Association, Appaloosa Games Horse Association, Appaloosa Cutting Horse Association) that are not otherwise entered in ApHC classes are subject to payment of the administrative charge in order to receive a back number and compete.

PAYMENT PROCEDURES

All entries must be made payable to the ApHC in U.S. funds drawn on a U.S. bank. Payment may be made in the form of personal checks, Visa, MasterCard, Discover, American Express or money order. *A 3% surcharge will be added to all credit and debit card charges.*

If you are paying by debit or credit card, you are advised to contact your bank or credit card issuer in advance about charges in excess of \$200 (or your bank card daily limit) to avoid the charge being declined for security reasons. **Cards declined by the bank will be treated as insufficient funds and may result in your horse being excluded from the program and/or late stall penalties or post entry fees being assessed.**

Any check returned to the ApHC office due to insufficient funds will require certified funds and payment of a returned check charge in order for entries to be processed. If the customer has not paid all charges for returned checks prior to the World Show, the agent/owner must bring certified funds to the show office for the entries to be processed.

The ApHC shall collect funds for entry and/or stall fees in which a credit card was declined or in which a check has been returned due to insufficient funds before processing entries or stall reservations.

The date at which funds are secured for declined credit cards or insufficient funds checks will be acknowledged as the date the entries and/or stalls are received and processed. Post-entry fees and late stall charges may be assessed to entries for which funds have been declined and which have not been cleared prior to the pre-entry deadline.

SHOW OFFICE

The show office is located adjacent to the John Justin Arena. The show office will be open October 26 from 8 a.m. to 5 p.m. Beginning the first day of the show, the show office will be open from 7 a.m. until the last ApHC class enters the arena for judging or until 9:00 p.m. (whichever is earlier) and will not close before 6:00 p.m. These are the only times that exhibitor packets can be picked up, class additions or scratches can be made or horse or exhibitor changes can be processed.

Post entries must be made by 6 p.m. the day prior to when the class is scheduled to be held with the exception of the following rail classes (junior, senior & green western pleasure; junior, senior & green hunter under saddle; junior, senior & green ranch rail pleasure) **POST ENTRIES IN BOTH THE LIMITED AND OPEN DIVISION of the rail classes listed herein ARE DUE BY 6 P.M. THE DAY PRIOR TO WHEN THE LIMITED DIVISION CLASS is scheduled to be held. Class numbers on this date will determine whether or not a limited class will be held on the day prior to the open class. See LIMITED DIVISION for additional information.**

The show office will NOT cash any checks. Third party checks will not be accepted.

See SUBSTITUTIONS and SCRATCHES/REFUNDS for further information.

CHECK-IN PROCEDURES

DO NOT BRING SICK HORSES TO THE SHOW! PLEASE BE RESPONSIBLE EQUINE INDUSTRY STEWARDS AND ADHERE TO THESE GUIDELINES FOR THE SAFETY AND WELL-BEING OF ALL THOSE IN ATTENDANCE AT THE SHOW.

Please refer to the following check-list to help you get your horse checked in, safely stalled and ready to show.

1. Upon arrival, check in at the stall office (**Richardson/Bass building**) – provide stall office personnel with the registered name of your horse(s) and the name of the person listed as “stalled with” on the stall reservation form you originally submitted. Stall personnel will give you a stall ledger listing



Hodges Badge Company, Inc.

Visit Us Online for Our Entire Selection of Awards

Call today for your **FREE** Equestrian catalog and sample ribbon packet!

Ad: Appaloosa World Show
Premium Book September 2023



New Awards for the 2023 Show Season

Introducing the newest additions to our extensive product lines. From our new rosettes and sashes to engraved and full color offerings, these beautifully crafted awards are sure to be cherished by all of your show recipients. Visit us online to see our entire collection of new awards.

Find us on



Fairford
278



Rye
344



Swindon
342

CLEMSON
FALL
CLASSIC
HORSE
SHOW
RESERVE
CHAMPION

4" x 6" Leatherette Picture Frame - R5100



5" x 7" Leatherette
Silhouette Frame
R5001



4" x 4" Bamboo
Full Color Coasters
F9200



your stall number(s) and give you directions to your stalls. **If you purchase a stall at the show, it must be paid for at the time the request is made – stalls will not be unlocked until payment is made. DO NOT OCCUPY STALLS THAT APPEAR TO BE VACANT. STALL MAPS POSTED ONLINE ARE NOT THE MOST RECENT ASSIGNMENTS BUT ARE BASED UPON STALL RESERVATIONS RECEIVED BY THE EARLY RESERVATION DEADLINE.** Please keep your ledger as proof of purchase to present in the show office when picking up your exhibitor packet. If you have received a confirmation letter in which a horse is listed as “not stalled”, it will be necessary to purchase or confirm the purchase of a stall for the horse and provide the stall ledger to the show office when picking up your exhibitor packet.

2. Check into the show office (Richardson/Bass Building) – To pick up your exhibitor packet that includes the exhibitor numbers, you must present the following items at the show office:

- a. **Original** Certificate of Registration (**PHOTOCOPIES WILL NOT BE ACCEPTED**), and
- b. Current (within 30 days) **health certificate dated on or after September 27, 2023** and
- c. Current (within 12 months) **proof of negative Coggins signed by a licensed veterinarian dated on or after October 27, 2022.**

Additionally –

- d. If your horse is listed as “not stalled” on your confirmation letter, you must present the stall ledger given to you upon check-in at the stall office when picking up your exhibitor number.
- e. Completed proof of accommodations form if not previously submitted.

3. Check your horse through the Inspection Station (Burnett Building). Take your horse, your horse’s **ORIGINAL** Certificate of Registration and the horse’s exhibitor numbers to the inspection station. All horses entered in the show must be inspected against their original papers and have the inspector place a stamp on the exhibitor numbers for that horse prior to being allowed entry into any class. **“Help” horses used in cutting and roping must also pass through the inspection station with a properly issued back number and ORIGINAL Certificate of Registration.**

CERTIFICATE OF REGISTRATION

Original Certificates of Registration must be presented to

the Show Office when picking up exhibitor packets for each horse and then to the Inspection Station prior to showing. **PHOTOCOPIES WILL NOT BE ACCEPTED!** It is not the responsibility of the ApHC to provide original Certificates of Registration.

You must pick up your exhibitor packet before going to the inspection station.

Horses (including “help” horses in cutting and roping) that have not been inspected by the Official Inspector will not be allowed to show or assist in the class.

HEALTH INSPECTION

All horses (including weanlings and including “help” horses used in cutting and roping) must be accompanied by a current 30-day health certificate (dated on or after September 27, 2023) as well as a current, within 12 months, proof of negative Coggins (dated on or after October 27, 2022), administered by a licensed accredited veterinarian showing positive identification of the horse, the horse’s temperature and the name and address of the laboratory performing the tests.

If Coggins and health papers are not available, the horse will not be allowed to unload on the grounds or shall be required to quarantine on grounds until these documents are received, will not be allowed to compete until documents are received, and fees will be forfeited.

Make sure the veterinarian uses registered names on Coggins and health certificates rather than “barn names.”

Exhibitor packets containing exhibitor numbers will not be released until all appropriate health documents have been received.

All horses are subject to inspection by the show veterinarian or State Veterinarian if suspected of harboring a communicable disease. All horses must be serviceably sound.

The attending show veterinarian recommends all horses be vaccinated for tetanus, influenza, rhinopneumonitis, EHV-1 and West Nile Virus.

EXHIBITOR NUMBERS

One exhibitor number will be assigned to each horse. This number will be used for all classes in which the horse is entered. If the horse is entered in more than one division (open & non-pro or ApHC & a specialty association class) one exhibitor number will be issued.

In addition to ApHC classes at the World Show, there are



FACILITY Information

PARKING

Please park vehicles and trailers in marked parking spaces only. Rip Johnson Drive is available for unloading only. Parking is not permitted on Rip Johnson Drive, Burnett/Tandy Drive or Tower Drive at any time. All other trailers must be parked in the trailer parking lot off of Trail Drive. No parking is permitted in any fire lanes. Vehicles blocking fire lanes will be towed at the owner's expense. See parking information on page 34.

SHAVINGS

Exhibitors and contestants are not permitted to bring shavings or other bedding onto the grounds. Will Rogers Memorial Center retains sole rights to shavings sales. Shavings are \$9.00-\$13.00/bag. Shavings are for sale at the WRMC shavings office in the Moncrief Building. Shavings can be purchased at the stall office if the shavings office is closed.

WASHING HORSES

All animals must be washed in designated wash areas. Horses may not be washed on sidewalks, aiseways or in stalls. The State of Texas prohibits wastewater from entering storm drains.

LOADING/UNLOADING AREAS

Unloading is permitted on Rip Johnson Drive and north of the Richardson-Bass Building. At no time is unloading permitted on Tower Drive west of the Burnett Building. Trailers may be parked while actively unloading and then must be moved to the designated parking areas.

STALL DECORATIONS

Please limit end-of-aisle decorations to 42" deep and at least a 7' height clearance over aisles for equipment. WRMC asks that a covering, such as plastic, be placed underneath any ground cover or plants. Decorations must be attached using temporary setups, such as wire or plastic ties and removed prior to move-out. The following may NOT be used: Nails, Liquid Nail, Bolts, Screws, Rubber Cement, etc. Any fabric or paper used or draped on stalls must be fire-resistant or treated with fire retardant.

VEHICLES

Any vehicle, including golf carts and scooters, must be operated by a licensed driver. See page 30 for complete guidelines.

PETS

Fort Worth city ordinance provides that pets are allowed in stall areas only and must be secured by a leash or in a stall at all times. They are not permitted inside any building on the property. Please make arrangements in advance for pets to remain in stall areas, RV or other area. Owners assume all liability for pets. Tickets may be issued to participants not adhering to this policy.

RV PARKING

WRMC offers RV spaces in a variety of lots ranging from full-service hook-ups to those offering power and water only. Spaces must be reserved in advance by completing the RV reservation form found on the ApHC web site. For best rates and availability, reservations must be received in the ApHC office accompanied by full payment no later than September 29. Late reservations are accepted after this date.

"BLUE BOARDS"

WRMC invites exhibitors to post signs, flyers, etc. on the "Blue Boards" posted throughout the facility. Signs posted in other areas will be removed.

DUMPSTERS

Exhibitors are encouraged to take advantage of the large rolling dumpsters throughout the complex. They may be rolled into stall aisles or the parking lot for easier cleaning.

BARN PARTIES

Barn Parties must be pre-approved by WRMC and ApHC.

AISLEWAYS

Aisles may not be blocked with obstructions including, but not limited to, chairs, carts, roping dummies, stall decorations or golf carts.

GOLF CARTS

Please see page 30 for Will Rogers Memorial Center guidelines for golf cart use.

SMOKING

Smoking is not permitted in the barns or stall areas. Fort Worth City ordinance prohibits smoking in any of the Will Rogers Memorial Center buildings. Violators will be prosecuted.

SECURITY

Security will be on the grounds on a 24-hour basis. For your protection, you will be allowed limited access to those streets which run parallel the barn area of the Will Rogers Memorial Center. Despite precautions, no one is immune from crime, so please take the proper care when locking trucks, trailers, tack boxes and tack stalls.

STALL AREA

Refrigerated air units, microwaves and other appliances are prohibited in the stall area.

The Will Rogers Memorial Center is a Non-Smoking Facility

various specialty associations conducting classes. In cases in which the horse is already entered in ApHC classes at the World Show, the horse must be shown in specialty association class(es) using the exhibitor number issued by the ApHC. In cases in which the horse is not cross-entered in ApHC classes at the show, exhibitors must pay a one-time drug testing fee of \$50 per horse and receive their exhibitor numbers from the ApHC show office.

All exhibitor numbers for ApHC-registered horses MUST be stamped by the official World Show inspector, **even if not entered in ApHC-sponsored classes.** Please see INSPECTION STATION for complete instructions.

In order to receive a back number, all other show requirements must be fulfilled including presentation of the horse's original Certificate of Registration, proof of negative Coggins, health certificate and the horse must be stalled. In addition, the owner and exhibitor must be current ApHC members in good standing and must be current members of an ApHC-affiliated regional club.

Please see HEALTH INSPECTION for information pertaining to required health papers for all horses on the grounds, regardless of whether they are entered in ApHC World Show classes.

To ensure that your placings are accurate, it is essential that the correct exhibitor number is used for all classes and displayed in the correct manner (see rule 711.M of the *Official Handbook of the ApHC* for complete rules for each class). Failure by exhibitor to display the correct number and in a visible manner while being judged shall result in disqualification from the class.

SUBSTITUTIONS

If substitution of a horse is necessary in a non-pro class or of an exhibitor in an open class, such changes must be made in writing prior to the class entering the arena or before judging has begun in the case of warm-up periods before a class starts. **No exhibitor or horse changes will be accepted at the announcer's stand or paddock. No exhibitor changes will be allowed in non-pro classes. No horse changes will be allowed in open classes.**

Any horse entering the arena in which the exhibitor is anyone other than the one on record with the ApHC show office and in which an exhibitor change has not been filed with the show office prior to the class entering the arena will be disqualified.

VET SCRATCHES/REFUNDS

Horses that become sick or injured PRIOR to the start of

the show must submit a vet's statement concerning the condition of the horse, the horse's registration name and number and date the sickness or injury occurred. This documentation must be received in the ApHC Show Office PRIOR to that horse's first class for any refund to be considered. **As of the first day of the show, only statements from the Official Show Veterinarian, along with an official class scratch form, will be accepted for horses that become sick or injured on the show grounds.** All documentation must be in the Show Office PRIOR TO THE CLASS ENTERING THE ARENA. Forms/documentation received after the class has entered the arena will not result in any refunds of any kind.

If a horse does not compete in a class in which it is entered and a vet certificate and official scratch form has NOT been received in advance of the class, the entry fees will be forfeited.

If a horse is disqualified from showing by management or officials or if a horse is entered and not shown, all fees will be forfeited.

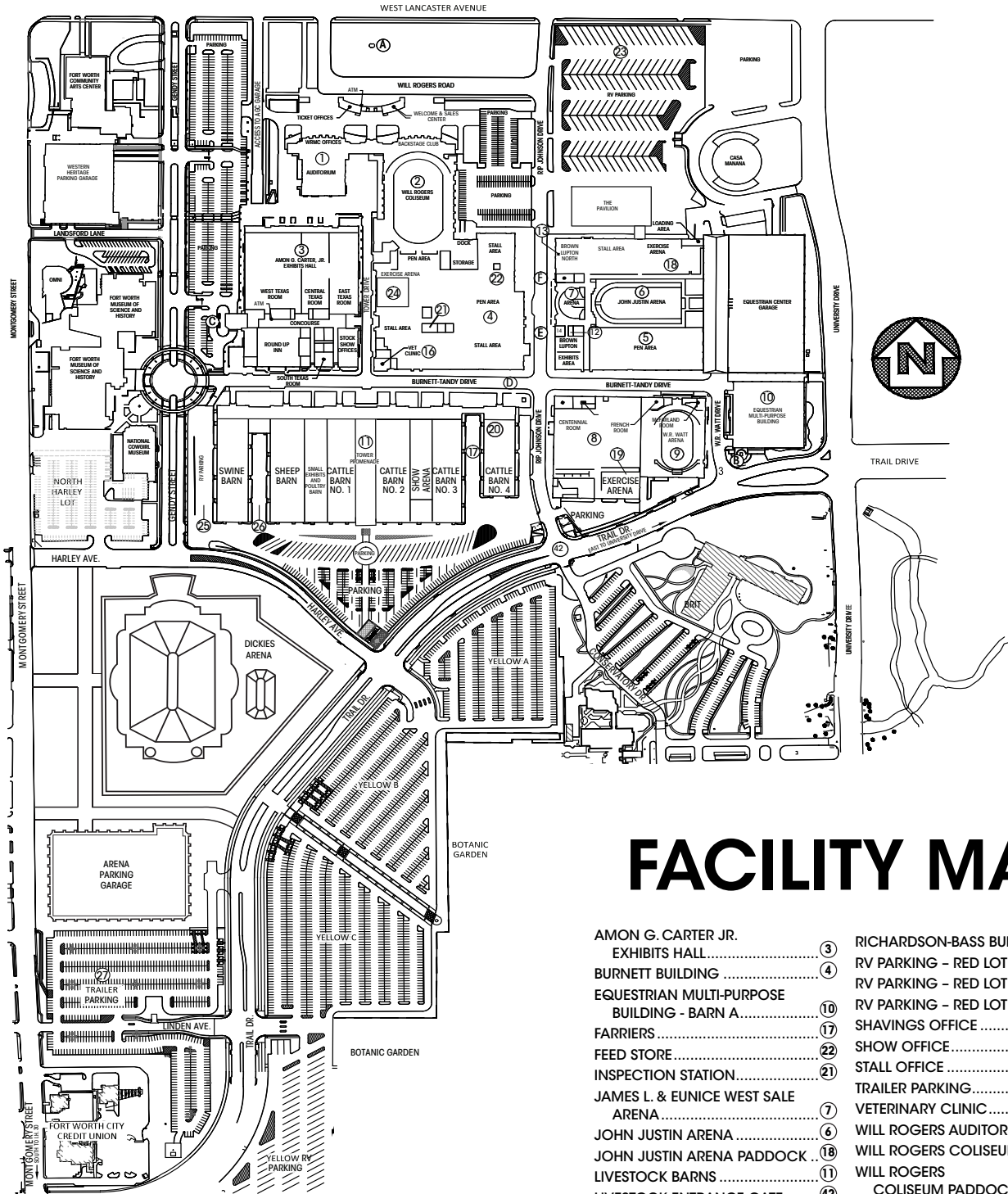
Properly completed vet scratches are the only instances in which refunds will be allowed. At the conclusion of the show and after the completion of a financial review, the class entry fee(s) will be refunded less a \$20 per class office charge.

In cases where a horse is vet scratched (with a signed/dated statement from the attending veterinarian) at least 15 days prior to the first day of the show (by October 12), in addition to other eligible class refunds, equipment and/or cattle fees will be refunded in full and stall fees will be refunded less a \$20/stall office fee. **Cattle and equipment charges are non-refundable after October 12, 2023.** Absolutely no refunds, regardless of circumstances, for administrative/drug testing fees, equipment fees (after 10/12), cattle fees (after 10/12), NSBA fees, ApHCF practice class fees, RV fees (after 9/29), stallion service auction Incentive class fees, stall fees (after 10/12) or credit card surcharge fees will be given under any circumstances.

Refund checks, for all entries originally paid by check, will be mailed to the original payee approximately 30-45 days following the last day of the show. For all entries paid by credit card, refunds will be credited to the original credit card used approximately 30-45 days following the last day of the show. No refunds will be made on amounts of \$10 or less.

No refund allowance can be applied to charges while at

2023
WORLD
 CHAMPIONSHIP APPALOOSA SHOW



FACILITY MAP

- | | | | |
|---|----|-----------------------------------|----|
| AMON G. CARTER JR. EXHIBITS HALL..... | 3 | RICHARDSON-BASS BUILDING..... | 5 |
| BURNETT BUILDING..... | 4 | RV PARKING - RED LOT #1..... | 25 |
| EQUESTRIAN MULTI-PURPOSE BUILDING - BARN A..... | 10 | RV PARKING - RED LOT #2..... | 26 |
| FARRIERS..... | 17 | RV PARKING - RED LOT #5..... | 23 |
| FEED STORE..... | 22 | SHAVINGS OFFICE..... | 20 |
| INSPECTION STATION..... | 21 | SHOW OFFICE..... | 14 |
| JAMES L. & EUNICE WEST SALE ARENA..... | 7 | STALL OFFICE..... | 12 |
| JOHN JUSTIN ARENA..... | 6 | TRAILER PARKING..... | 27 |
| JOHN JUSTIN ARENA PADDOCK..... | 18 | VETERINARY CLINIC..... | 16 |
| LIVESTOCK BARN..... | 11 | WILL ROGERS AUDITORIUM..... | 1 |
| LIVESTOCK ENTRANCE GATE..... | 42 | WILL ROGERS COLISEUM..... | 2 |
| MONCRIEF BUILDING..... | 8 | WILL ROGERS COLISEUM PADDOCK..... | 24 |
| PHOTO BOOTH..... | 13 | W.R. WATT ARENA..... | 9 |
| | | W.R. WATT ARENA PADDOCK..... | 19 |

the show. This is the only circumstance under which refunds will be issued.

INSPECTION STATION

All ApHC-registered horses must report to the inspection station PRIOR to showing in their respective classes, including if only showing in classes conducted at the show by a specialty association. All “help” horses in cutting and roping must also pass through the inspection station PRIOR to assisting in these classes.

The horse’s original Certificate of Registration and exhibitor number must be presented to the Official Inspector prior to showing. Horses will not be allowed entry into the arena for any class until that horse has passed through the inspection station and that horse’s exhibitor number has been stamped by an Official Inspector.

The inspection station will be open from 8 a.m. to 5 p.m. on October 26, and from 7 a.m. to 5 p.m. each day thereafter. **If it is necessary for an inspection to be performed outside of these hours an inspector may be available; however, the exhibitor will be charged \$100 per horse payable at the time of the inspection.** The ApHC suggests you pick up your exhibitor number (contained in your exhibitor packet) in the show office and have your horse inspected as soon as you arrive on the grounds to avoid long lines prior to your class.

The inspector may, at his sole discretion, refuse to allow a horse to participate if the registration of the horse appears invalid or otherwise improperly issued. If an Official Inspector refuses to permit a horse to participate, the owner has the right to appeal such refusal to the appeals committee of the ApHC Board of Directors (see Rule 273 of the *Official Handbook of the Appaloosa Horse Club*).

DRUG TESTING

All horses entered in the show, and/or on the grounds, are subject to drug testing. For complete rules and regulations concerning drug testing procedures, refer to rule 40 of the *Official Handbook of the Appaloosa Horse Club*. The owner, trainer or other responsible party must witness the blood or urine sample collection and sign the forms required by the veterinarian. Failure to do so waives any subsequent objections to the testing process or results. All awards will be issued pending drug test results. If a horse is tested positive for unapproved drugs or unacceptable levels of approved medication, all ribbons, trophies, and other awards must be held in

escrow by the ApHC until notification of the disciplinary committee’s decision.

Drug tests will be administered at the discretion of the ApHC. Those horses selected for testing must report to the drug testing station immediately following each class or random request. Once blood and urine samples have been collected, the horse may leave the testing stall. Drug testing procedures will be strictly enforced.

OFFICIAL PHOTOGRAPHER

The official and EXCLUSIVE photographer for the World Show is Becky Ruehle Photographix LLC. Photographers (including customers with cell phones) other than those authorized by Becky Ruehle Photographix are prohibited from entering the arena and/or staging photographs at the out-gate, shall not offer services on the grounds during the show whether for monetary compensation or not. Professional photography equipment and cameras with lenses larger than 3 inches and professional photographers capturing images for sale or for distribution on social media or networking sites are prohibited without the expressed written permission from Becky Ruehle Photographix LLC.

OFFICIAL VETERINARIAN

In the event the ApHC designates a properly licensed veterinarian or veterinarians as the official veterinarian(s) or official drug testing veterinarian(s) for an ApHC-approved or sponsored event including, but not limited to, the National Show and World Show, as a service to exhibitors and other persons, and any exhibitor or other person directly or indirectly employs, retains, hires or otherwise utilizes the services, advice and/or expertise of such official show veterinarian(s) or official drug testing veterinarian(s), the ApHC shall not in any manner or to any extent whatsoever be liable or responsible for any action, conduct, decisions or services by such official show veterinarian(s) or official drug testing veterinarian(s). Such exhibitor or other person expressly releases and holds harmless the ApHC from any and all claims, liabilities, losses or actions of any kind arising from or in connection with the exhibitor or other person’s employment, retention, hiring or utilization of the services, advice and/or expertise of such official show veterinarian(s) or official drug testing veterinarian(s).

The Official Show Veterinarian is Equine Sports Therapy of Whitesboro, TX. There may be veterinarians other than the ApHC Official Veterinarian on-site, however once the show starts vet scratches will not be accepted from anyone other than the ApHC Official Veterinarian.

Become a Sponsor

2023

WORLD

CHAMPIONSHIP APPALOOSA SHOW

*There are several ways
to show your support
of the World Championship
Appaloosa Show and see your
name in lights!*



Harris Trophy Saddle Sponsor: \$3,500

Day Sponsor: \$750

Buckle Sponsor: \$225

Class Sponsor: \$125

Farm Banner: \$100

World Show Advertising

Webcast Advertising

Static Side Banner: \$150

Full Banner: \$225

15 Second Commercial: \$225

30 Second Commercial: \$350

45 Second Commercial: \$450

60 Second Commercial: \$575

For information contact Amber Miller:
marketing@appaloosa.com or (208) 882-5578 ext 273

Learn more at www.appaloosa.com/world-show

Any animal on the grounds in immediate need of veterinarian care will be treated at the expense of the owner if the animal's owner(s) cannot be located.

CLASS PROCEDURES

The ApHC has established class procedures to benefit the majority of exhibitors participating, within the limits of available budget, manpower and time.

CLASS PATTERNS

Patterns will be available to download (at no charge) on the ApHC website on October 13. Pattern books will be available in the show office and in the stall office at no charge. Patterns will be posted in the paddocks the day of the class.

DISQUALIFICATION

Any exhibitor, horse or owner disqualified from any class for any reason shall not receive a refund. When disqualification occurs by the show management or judges, the decision is final. In addition to other disqualifications as outlined in the rules and regulations contained in the *Official Handbook of the ApHC*, judges (including equipment judges) shall have the authority to disqualify entries for illegal equipment or attire, inhumane treatment, unsoundness/lameness or the presence of blood on the horse. See rule 30 of the *Official Handbook of the ApHC* for more information.

Exhibitors are not allowed to wear earpieces or to have wireless contact with anyone during the course of a class. Exhibitors in violation of this rule shall be disqualified.

In response to industry developments, the ApHC Board of Directors has agreed that the use of magnetic devices in clothing in showmanship, horsemanship, hunt seat equitation and saddle seat equitation constitutes an unfair advantage for exhibitors and shall not be allowed at ApHC-sponsored shows (Youth World, National Show, World Show). Magnetic devices must be removed prior to competition or the exhibitor shall be disqualified. This show management rule is effective immediately.

The use of belly bands is prohibited anywhere on the show grounds at ApHC-sponsored shows (Youth World, National Show, World Show).

WORKING ORDER

All working orders in elimination and final classes will be decided or drawn by show management in accordance with official ApHC rules. **If you or your horse are entered in back-to-back or concurrent classes and feel that this**

will cause a time constraint, you must inform the show office by 5 p.m. the day prior to the classes and request a change in the order of go. Adjustments shall only be requested for direct horse or exhibitor conflicts. No adjustments will be made for trainer's convenience or non-show conflicts. Order of go adjustments are made to address direct horses/exhibitor conflict. If possible, show management will then adjust your working order. If you do not contact the show office prior to 5 p.m. the day before the class in question, we may not be able to accommodate your request. Once working orders or cuts have been posted, changes will not be made unless approved by show management.

PADDOCK PROCEDURE

Only exhibitors and their horses are allowed in the alleyway and holding area. This policy applies for the duration of the class, including eliminations and finals, etc. Once the horse has entered the paddock, only exhibitors entered in the class will be allowed to handle or ride their own horse. *For safety reasons, exceptions may be made to this in over-fence classes when an exhibitor is showing more than one horse in a class. Exceptions must be approved by the paddock manager.*

Grooming is prohibited in these areas including, but not limited to, any type of spraying.

Barn calls are a courtesy and will be made for each class and for all exhibitors entered in each class. Regardless of the circumstances, it is the exhibitor's ultimate responsibility to report to their class on time. Exhibitors must check in with the paddock announcer.

Paddock personnel will call exhibitors to enter the arena in their posted order of go. All horses must be ready and waiting in the make-up arena so they may enter the main arena promptly when called.

In classes in which an order of go has been posted, entries not entering the arena for judging in their posted order of go have missed their class and will not be allowed to enter the arena to compete.

In classes in which a time limit has been given to enter the arena, entries not in the arena at the expiration of that time limit have missed their class and will not be allowed to enter the arena to compete.

Late entries will not be admitted into the arena once the gate has been closed.

Entrants are not permitted to enter the arena for judging unless the horse has been through the inspection station

Arena WerksTM.com
Making Dirt Great Again
Proverbs 16:3
800-644-3724

For that million dollar finish, you need million dollar ground by the Arena Werks Elite.

2022 The Run For A Million Champions!

Arena Werks Elite Team Member:



NATHAN PIPER
REINING HORSES




Patriot
Owned by Shannon & Hershel Reid

Walters

and the exhibitor numbers have been stamped by an official inspector. **No refunds will be issued for missed classes.**

EQUIPMENT JUDGE

An equipment judge(s) shall be employed by and be a representative of the ApHC. The equipment judge shall be responsible for attire and equipment rule interpretations. (Final interpretations are the responsibility of show management). All bits, tack, appointments and attire shall be checked by the equipment judge prior to the exhibitor entering the arena. Any equipment considered to be inhumane or illegal by the official equipment judge must be removed or entry into the arena will be denied. The equipment judge and/or judges in the arena may disqualify an entry for illegal equipment, improper attire, inhumane treatment, unsoundness/lameness or the presence of blood on the horse. See Rule 30 in the *Official Handbook of the ApHC* for complete rules regarding inhumane treatment.

The equipment judge(s) shall have the authority to call for a blood and/or urine test on any horse.

The equipment judge(s) may serve as an alternate show judge at the discretion of show management.

BLOOD DISQUALIFICATION

In all classes and all divisions of classes, judges and/or equipment judges may disqualify horse(s) from the class if fresh blood is found on the mouth and/or body areas of a horse (i.e. including but not limited to the barrel, flanks, belly, sides, shoulders). **Judges and/or equipment judges have the sole authority to determine if the blood found on the horse warrants disqualification from the class and the judge's or judges' decision is final and not subject to protest.**

LAMENESS

Rules regarding lameness are adopted to protect the health of Appaloosas exhibited in ApHC-approved and -sponsored shows. At show management's discretion, either at the beginning and/or upon completion of a class or individual work, prior to leaving the arena the horse shall be asked to perform movements/maneuvers on a loose rein or lead to demonstrate soundness. Exhibition in any class of a horse that is lame, as determined by show judges, shall be cause for disqualification. See rule 712 in the *Official Handbook of the ApHC* for complete rules regarding lameness. A judge's decision as to the lameness of a horse is final and not subject to protest.

INHUMANE TREATMENT

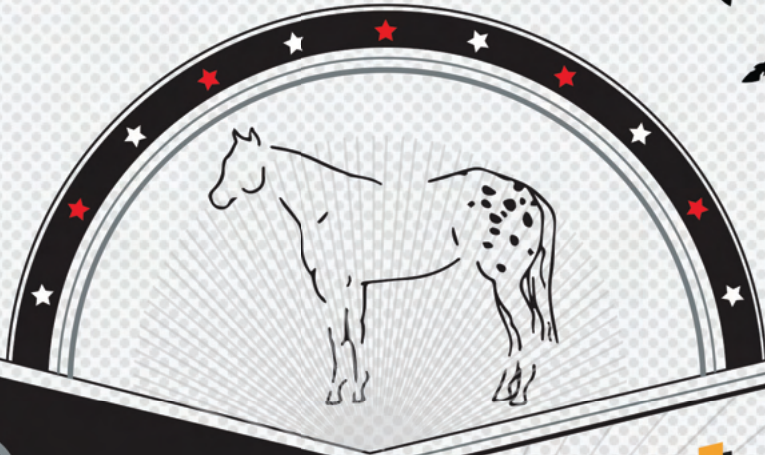
The ApHC is committed to the humane and proper treatment of all animals. The welfare of the horse is the primary consideration in all activities. Horses will be treated with kindness, respect and compassion at all times. Owners, exhibitors, trainers and all responsible parties must ensure the health and well-being of animals in their care at all times including, but not limited to, handling, transportation, training, treatment and stalling.

Per Rule 30.A.1 of the *Official Handbook of the Appaloosa Horse Club*, no person may treat a horse in an inhumane manner which includes but is not limited to:

- Placing an object in a horse's mouth so as to cause undue discomfort or distress.
- Tying a horse in a manner as to cause undue discomfort or distress including but not limited to in a stall, trailer or when longeing or riding.
- Letting blood from a horse.
- Use of inhumane training techniques, equipment or methods including but not limited to poling or striking horse's legs with objects (i.e. tack poles, jump poles, etc.)
- Attaching any item or appliance that restricts movement or circulation of the tail.
- Inhumane treatment that causes a horse to bleed.
- Any surgical procedure or injection of any foreign substance or drug which could affect the horse's performance or alter its natural conformation or appearance is prohibited, except for those surgical procedures performed for the sole purpose of protecting the health of the horse.
- Exhibiting a horse that appears to be sullen, dull, lethargic, emaciated, drawn or overly tired.
- If fresh blood is found on any mouth and/or body areas of a horse, (i.e.: including but not limited to: barrel, flanks, belly, sides, shoulders) the judge(s) must excuse the horse from the competition.
- Withholding food and/or water for prolonged periods of time such that it causes undue discomfort or distress to the horse.
- Excessive spurring or whipping;
- Excessive jerking of reins;
- Excessive fencing;
- Excessive or aggressive spinning;
- Use of prohibited equipment, including, but not limited to: saw tooth bits; hock hobbles; tack collars; or tack hackamores; riding in a curb bit without a curb

2023

WORLD
CHAMPIONSHIP APPALOOSA SHOW



ELITE STALL MAT RENTALS

ORDER
NOW

APPALOOSA

••• WORLD CHAMPIONSHIP •••

OCTOBER

NOVEMBER



25

04



stallmatrentals.com

ORDER ONLINE TODAY!

strap; wire or solid metal curb straps no matter how padded; wire cavesson; wire or cable tie-downs (unless wrapped or padded); bumper bits; metal bosals (no matter how padded); chambons; headstalls made of metal (no matter how wrapped or padded), twisted rawhide, or rope may not be used on a horse's head (3/8 inch rope may be used with a slip/gag bit); running martingales used with curb bits and/or used without rein stops;

- Applying excessive pressure on or excessively jerking a halter lead shank or an allowed lip chain
- Any other treatment or conduct deemed by a show official to be inhumane or abusive.
- Exhibiting a horse that has an open, raw or bleeding sore that repeatedly comes in contact with the hackamore.
- The standard by which conduct or treatment will be measured is that which a reasonable person, informed and experienced in generally accepted equine training and exhibition procedures, would determine to be cruel, abusive or inhumane.

A Show Steward may be employed by and be a representative of the ApHC. He/she shall monitor the treatment of horses on the WRMC property. Upon discovery by a show official, show steward or barn monitor of inhumane treatment, show management may immediately disqualify the horse and exhibitor and report the matter to the ApHC for further disciplinary action.

STALL RESERVATIONS

Pre-Entry Deadline: Received in office (with full payment) by September 29

You must complete the ApHC stall reservation form found online. Please complete only one form per trainer/ranch/group. You must have your stalling information in the ApHC office by the pre-entry deadline to receive preferred stabling and pre-entry deadline prices. Stall location and/or availability are not guaranteed.

Late fees shall be assessed to both regular and daily stalls if the reservations are received after September 29. Late fees are \$100 per stall or \$45 per stall per day for daily stalls.

Stall reservations not received in the ApHC office by October 6 should be taken to the show and submitted to the stall office upon arrival.

Horses other than those registered with the Appaloosa

Horse Club may be stalled on the grounds. However, ApHC-registered horses have stalling priority. Non-Appaloosa horses may be stalled with Appaloosa horses depending upon space availability. Stalling of all horses, including those not registered with the ApHC, is at the sole discretion of show management.

Stalls for show horses will be located in the Burnett Building, Richardson-Bass Building, Moncrief Building and Barn 4. The Equestrian Multi-Purpose Building is reserved for EWD entrants only.

STALL FEES:

- \$296 (\$396 if received after 9/29) each – Burnett Building, Richardson-Bass Building, Moncrief Building,
- \$275 (\$375 if received after 9/29) each – Barn 4
- \$95 (\$140 if received after 9/29) per night - Daily Stalls are all located in Barn 4 or Barn 3.

No stall reservations will be accepted without full payment of all stall fees. See PAYMENT PROCEDURES for information on purchasing your stalls.

Will Rogers Memorial Center will assess a charge of \$20/panel for any portable stall panel that is removed during the show. Exhibitors removing stall panels will be assessed these fees after the conclusion of the show and upon ApHC receipt of the Will Rogers Memorial Center invoice. **Exhibitors may choose to fold back the stall panels in portable stalls and zip-tie them but MUST RE-ASSEMBLE the stall at the conclusion of the show to avoid additional charges.**

STALL RESERVATION FORM:

The stall reservation form must be completed and submitted with each horse's registered name and registration number. List all horses that will be occupying stalls. List all tack/feed stalls separately as "TACK/FEED". If your horse is in the process of being registered, include it on the stall card with the registration name and number as "REGISTRATION PENDING".

Please indicate your first and second choices for stall locations (Refer to WRMC Facility & Barn Maps online for building locations) and include aisle or end location and any other notes that may be helpful for personnel assigning your stall location. The number of stalls requested cannot exceed availability in that area.

If you are stalling with a trainer/ranch/group, send all stall requests AND PAYMENTS in the same envelope, choosing just one trainer/ranch/group name for the

Great Discounts to get you Traveling Again



As the world slowly begins to reopen, we hope all of your postponed travel plans are soon back on track. Before you book your next adventure, remember that your **Appaloosa Horse Club Membership** gives you access to incredible discounts on everything you need for your next vacation!



Ready to hit the road? Explore great deals on your next rental car.

Avis

Your ApHC membership makes you an Avis Preferred member, which means you'll travel better, save time and gain access to exclusive offers. ApHC members always receive savings of up to 25% off base rates and enjoy even more perks like complimentary upgrades or a free weekend day. Skip the counter and paperwork and go straight to your car!

Association Code: AWD# A672061
Call 1-800-331-1212 or visit [avis.com/en/association/A672061](https://www.avis.com/en/association/A672061) to make your reservation.

Budget

Budget has proudly partnered with ApHC to offer its members a guaranteed savings of 25% off base rates, and complimentary membership in Budget Fastbreak. As one of the most recognized car rental brands with locations in more than 120 countries, you get to enjoy the fastest, easiest rental

experience, plus other great offers like dollars off, and a free upgrade.

Association Code: BCD B079569
Call 1-800-527-0700 or visit <https://www.budget.com/en/association/B079569> to make a reservation.



Want to book a staycation or hotel for your next trip? We got you covered...

Red Roof Inn

Red Roof Inn has over 600 hotels nationwide. Take advantage of your extra membership perks like 15% off traditional rates, free Wi-Fi, HBO, ESPN, CNN and pets that can stay free! Find great rooms, comfortable lodging and fantastic rates to make your next trip even more memorable.

To book, simply mention the Appaloosa Horse Club when you book your next reservation on site at any location or by calling 800-RED-ROOF (800-733-7663) Or visit ApHC's Red Roof Inn website at https://www.redroof.com/deals/partner/appaloosa_horse_club

Motel 6

Save even more off every day getaway deals! Motel 6 has partnered with ApHC to offer all its members a 10% discount at any of their 1,100+ locations in the U.S. and Canada. You'll find dependable, comfortable and pet friendly rooms with great service for the lowest price of any national chain.

To book your reservation call 1-800-4-Motel 6 or online by visiting <https://www.motel6.com/content/g6/en/home/cp/affinity.html> Discount Code: CP574130

Wyndham Hotels

As an ApHC member, you receive up to 20% off the "best available rate" at over 7,500 participating locations worldwide. Whether you are looking for an upscale hotel, all-inclusive resort or something cost-effective, Wyndham Hotels has the right hotel for you at the right price. Book online or call and use your exclusive discount ID number at the time of booking to lock in your savings!

ID number: 1000007489
Special Member Benefits hotline: 1-877-670-7088 Reserve your room online today: https://www.wyndhamhotels.com/?corporate_id=1000007487



Ready to explore?

Learn more by visiting [Appaloosa.com/benefits-of-membership](https://www.appaloosa.com/benefits-of-membership)

“stalled with” person. Include the total number of stalls on one card only. Stall requests not included in the same envelope or not faxed together are not guaranteed to be stalled together.

NOTE: The person listed as “stalled with” is responsible for all money due and will be held liable for all damages reported to stalls and is responsible for any payments due for damage or stall panels that are removed and not replaced by the exhibitor.

ApHC will attempt to stable each trainer/ranch/group according to choices requested on the stall reservation form. However, stabling decisions are made based upon the stabling history of the person listed as “stalled with” at this show and based upon the availability of stalls in the requested area(s).

If you request additional stalls upon arrival, or after the original request is received, those stalls must be paid for at the time of the request and may not be located with your other stalls. Stalls purchased after September 29 will be at late prices regardless of when you purchased your original stalls.

All reservations or changes to original reservations must be made in writing to the ApHC office. **Reservations or changes to current reservations must be made in writing to the ApHC office. Reservations or changes to reservations will not be accepted over the phone.**

STALL MOVE-IN/MOVE-OUT:

Stalls will be available for move in after 7:30 a.m. Wednesday, October 25. **Do not arrive prior to this time as WRMC will be unable to accommodate early arrivals. Entry gates will be closed to allow for sanitizing/cleaning and waste removal between the previous show and the ApHC World Show.**

Stalls in all barns must be vacated by 11:59 a.m. Sunday, November 5.

STALL REQUIREMENTS:

All horses participating in the show, i.e. entered, turn-back, assisting or any breed of horse on the grounds must be stalled. Horses CANNOT be tied to horse trailers.

Exhibitors are not allowed to change stalls without the approval of the stall manager. If you change stalls without the approval of the stall manager, you will be charged for both stalls. Stalls cannot be re-sold.

Air conditioning and/or heating units are not allowed in the barns. Individual cooling units will be confiscated until

the end of the show.

Stall panels in permanent stalls shall NOT be removed under any circumstances. See STALL FEES for information on fees for removing panels in portable stalls.

STALL DECORATIONS:

If your stalls are located on an aisleway in the Burnett, Richardson-Bass, or Moncrief buildings, the ApHC requests that they be decorated for the duration of the show for presentation to the public and to minimize any potential hazards that occur while assembling decorations and which may cause harm to fellow exhibitors and horses. If they are not, you may not receive consideration for that location at subsequent shows.

Stalls in the Burnett and Richardson-Bass buildings are on concrete floors and stalls measure 9’10” wide by 9’8” deep.

Portable stalls (measuring 9’5” x 9’5”) are set in the Moncrief building, Equine Multi-Purpose building and in all the cattle barns. Stalls in the Equine Multi-Purpose Building are on concrete floors. Stalls in the Moncrief building and cattle barns are on dirt floors.

All materials used in decorating stalls must be treated with a fire retardant or be made of fire-retardant material. Any fabric or paper used or draped on stalls must be fire-resistant or treated with flame retardant. Due to fire regulations, stall aisles cannot be blocked or closed off to through traffic. The Fire Marshall will be on-site randomly inspecting decorations for compliance with regulations. See FACILITY INFORMATION page 21 for complete regulations.

The person listed as “stalled with” is responsible for any damage to stalls, and for any clean-up of materials such as decorations, signs, fabric, nails, tacks, wires, etc. Any damages assessed by WRMC will be billed to the person listed as “stalled with”.

STALL OFFICE HOURS:

The stall office is located in the Richardson/Bass Building and will open on Wednesday, October 25 at 7:30 a.m. and will be open 24 hours a day thereafter through the last class of the show.

STALL CHECK-IN PROCEDURES:

After arriving at the Will Rogers Memorial Center, you must check-in at the stall office to receive your location.

PROUD TO BE THE OFFICIAL
NATIONAL AND WORLD SHOW PHOTOGRAPHER

RUEHLE PHOTOGRAPHIX

Backdrop, Arena, On Location
& Portrait Sessions, Candid,
Farm Calls, Ad Page Design

BLANCHARD, OKLAHOMA

262-470-3633

RUEHLE.BECKY@GMAIL.COM



© Becky

© Becky

WWW.RUEHLEPHOTOGRAPHIX.COM

You must verify with stall office personnel the names of all horses that will be stalled. You will receive a stall ledger from the stall office listing stall locations and proof of payment (only if changes are made after the original reservations were received). The ledger must be presented in the show office when picking up your exhibitor packet. Exhibitor packets for horses entered that do not have verified stall locations will not be released.

The person listed as “stalled with” is responsible for any damages and for ensuring that the stalls will be left in good, clean condition.

STALL MAINTENANCE:

Exhibitors are required to keep their stalls clean and neat, dispose of refuse matter in designated dump areas and remove all items and materials they attach to the stalls, including decorations and all signs.

For more information regarding Will Rogers Memorial Center stall regulations, please see FACILITY INFORMATION on page 21.

STALL FORFEITURE OF LOCATION:

Per Board motion, any suspended person or person otherwise ineligible to participate at the National and/or World Show(s) shall forfeit any preferred stall(s) location at the National and/or World Show(s). In connection with any member’s stall entry reservation application for the National and/or World Show(s), if the person they list as “being stalled with” is suspended or ineligible to participate at the National and/or World Show(s), the member applicant will forfeit their preferred stalling location(s) at the National and/or World Show(s) as applicable. All other members stalling with any suspended or ineligible person will forfeit their preferred stalling location(s).

Stalling location refers to any established or designated area that the suspended or ineligible person has usually occupied. At the end of the suspension or ineligibility period any such preferred stall location(s) shall not revert back to the suspended or ineligible person or other members who forfeited their preferred stalling location(s).

STALL BARN RULES:

See FACILITY INFORMATION in this book for more details.

STALL BEDDING:

Shavings are for sale at the WRMC grounds. Current shavings prices are \$9/bag of small, loose shavings or

\$13/bag of large, compressed shavings or large mixed shavings. Orders can be placed at the shavings office located in Barn 4. During evening hours when the shavings office is closed, you may purchase a limited amount of shavings from WRMC through the ApHC stall office.

No outside commercial vendor deliveries will be permitted. Exhibitors are not allowed to bring their own shavings on to the grounds and will be billed for unauthorized shavings. Costs to remove unauthorized bedding will be billed to the exhibitor.

As a service to World Show exhibitors, the ApHC will accept pre-bedding orders on behalf of the WRMC for orders of 50 or more bags of shavings. A pre-bedding form is available online by clicking on the World Show logo at www.appaloosa.com. **Submit pre-bedding forms completed in their entirety directly to the ApHC no later than October 5 and make checks payable to the ApHC. Requests not received in the ApHC office by October 5 will not be filled.** In most cases, delivery of pre-bed orders will be made prior to your arrival on the grounds.

The shavings vendor is not affiliated with the ApHC. The ApHC assumes no responsibility and/or liability of any kind in connection with any bedding/shavings purchased from the on-site vendor.

FEED

The Official Feed Supplier of the World Championship Show is Russell Feed & Supply. Only the Official Feed Supplier will be allowed to deliver feed or do business on the grounds. Orders can be placed by using the form available online by clicking on the World Show logo. Orders should be mailed directly to Russell Feed & Supply, NOT to the ApHC.

Russell Feed & Supply is not affiliated with the ApHC. WRMC regulations will not permit feed to be delivered to exhibitors from outside vendors, however exhibitors have the right to bring feed with them onto the WRMC property that has not been purchased from the on-site vendor.

The ApHC assumes no responsibility and/or liability of any kind or connection with any hay and/or feed purchased from the on-site vendor.

GOLF CARTS

Will Rogers Memorial Center requires that all operators of golf carts observe the following rules to allow for safe and continued use of golf carts at the World Show. Any person

CAPTURE THE MOMENT



Action Video
professional video production
& webcasting

Official Videographer of the ApHC

Watch the Live Webcast

**Order Your HD Videos on
DVD or Digital Upload**

www.321actionvideo.com

operating a golf cart in an unsafe, reckless or dangerous manner will be detained by law enforcement officers. In some cases, golf carts can and will be impounded.

- Golf cart operators MUST have a valid driver's license with them at all times.
- Golf carts are prohibited inside the trade show and on arena concourses. Golf carts may be driven inside stall areas if operated in a safe manner with care exercised to avoid endangering people and animals.
- Golf carts may only be driven on the streets in the direction of traffic.
- Golf carts are prohibited inside all arenas unless the arena is specifically designated for that purpose.
- Golf carts may be used in show or exercise arenas only if operated by ApHC or WRMC show officials or personnel.
- Golf carts must yield to all pedestrians and horses and may not be parked blocking an entrance.
- Golf carts parked in front of handicapped entrances or ramps will be impounded.
- Golf carts can be parked on some sidewalks, but SHALL NOT BE DRIVEN on any sidewalks.

The use of the golf carts on Will Rogers Memorial Center grounds is a privilege. Anyone abusing this privilege will not be allowed to use any golf cart. Golf carts are not available for rental from the ApHC or the WRMC. See ad on page 13 for golf cart rental information.

The official golf cart supplier and World Show Sponsor is Metro Golf Cars. While exhibitors may choose to rent from other suppliers or bring their own, no outside delivery of carts is allowed on the WRMC property.

PARKING

As provided by WRMC and subject to change - There is no charge for unloading either horses or trade show merchandise from the street. However, you must unload and move on – no street parking except for unloading. Exhibitors will need to set up their stall or booth after they unload since there is no parking on the streets. A parking fee will be charged when the trailer is moved to a parking lot.

Parking anywhere inside the complex is \$5/day per vehicle. Properly permitted vehicles may come and go from the property at will. Posted parking permit fees may differ from this, however parking for horse show attendees is \$5/day per vehicle. Please be sure to request the horse show fee when paying for parking.

There is no trailer parking inside the complex unless occupying a paid RV space. Trailer parking is not allowed south of the Moncrief building or the cattle barns.

RV spaces come with one parking pass for a tow vehicle at no extra charge. This pass will allow the vehicle to park in any lot on the property.

All of the parking attendants have the ability to take cash or credit cards. Multi day passes are available on site.

Trailers and/or vehicles violating posted or announced parking rules shall be subject to towing/impounding.

RECREATIONAL VEHICLES

WRMC offers RV spaces on the complex in various locations. Some spaces offer water/electricity only. There are 104 spaces north of the Richardson-Bass building that offer full hook-ups including sewer.

Space reservations are being accepted by the ApHC on a first-come, first-served basis. A reservation form can be found by clicking on the World Show logo on the home page at www.appaloosa.com. **Spaces may be reserved at the lowest rates if received and paid in full by September 29.**

All spaces should be reserved as soon as possible to guarantee availability.

ACCOMMODATIONS INFORMATION

The State of Texas provides a financial incentive package to the ApHC to host the World Championship Appaloosa Show & World Championship Appaloosa Youth Show in Fort Worth. In order to sustain their financial support, the ApHC must certify the number of hotel room nights utilized in Fort Worth during the show. Show attendees must provide lodging information when completing entries.

FARRIER

The official farrier for the World Show is David Wiggin Jr. He is located between Barns 3 & 4. Exhibitors may use their personal farrier on site. However, other farriers wishing to do more than their regular customers or advertise for new customers on the grounds must receive permission from the official farrier.

COMMERCIAL EXHIBIT INFORMATION

For information contact the Trade Show Coordinator, ApHC, 2720 W. Pullman Road, Moscow, ID, 83843, (208) 882-5578 ext. 256. The trade show will be open daily from 9 a.m. to 6 p.m. The trade show will close at noon on Saturday, November 5.

BEST *of the* WEST

GIFT EXPO

October 27 – November 4, 2023



Commercial vendor information located
at www.appaloosa.com or contact the Marketing Department
at (208) 882-5578 ext. 273 or marketing@appaloosa.com

Exhibitors will not be allowed to sell retail items from their stall locations. Exhibitors wishing to sell retail items must purchase trade show space from the ApHC, pay all applicable fees and are subject to abide by a contractual agreement between the ApHC and said vendor.

Vendors are subject to Texas State retail and tax laws.

DOGS/PETS

See FACILITY INFORMATION regarding pet regulations.

ELIMINATION, FINALS AND SCORING

SCORING

For the majority of classes either a four-judge or a three-judge format will be used to compute placings. This will be determined by show management. In most four-judge formats, the low scores will be discarded and the remaining three scores added together to determine final placing. In the three-judge format, no scores will be discarded, all three scores will be added together to determine final placing.

In placed classes, the judge's placing will be converted into numerical scores according to this chart.

1.....120	6.....55	11.....15
2.....105	7.....45	12.....10
3.....91	8.....36	13.....6
4.....78	9.....28	14.....3
5.....66	10.....21	15.....1

CUTS

In large classes when cuts are necessary, the cuts will be determined by a random draw. Each cut will enter the arena for judging and will be placed by all judges. Top placing entries from each cut will return to the arena for a final go-round. The same exhibitor must exhibit the same horse in both the cut and the final. The same equipment must be used on each horse in the cut and the final.

TIE-BREAKING PROCEDURES

All ties, except first place in individual open and non-pro performance events, will be broken by a tie-breaking judge (pre-determined by show management before the class begins). If a tie occurs for first place in any individual open or non-pro performance class judged complete or in any individual open or non-pro performance class finals judged complete, there will be a work-off for first place only. Individual performance classes include western riding, reining, working hunter, cutting, trail, ranch trail, ranch riding and judged roping events.

In the event of a first-place tie in working cow horse, see

Rule 741.F in the *Official Handbook of the ApHC* for tie-breaking procedures.

All first-place ties in limited open classes will be broken by the tie-breaker judge.

ELIMINATIONS

Eliminations may be held in classes when warranted by the number of entries in the class and shall be at the discretion of show management. Any horse receiving a no-time or a no-score in an elimination round will be eliminated. In case of a tie, except in stumps and stake races, all those tied will go forward to the finals. In the event that it is not necessary to run an elimination round, the class will be run complete at the time the final round is scheduled.

In **Camas Prairie Stump Race** and **Nez Perce Stake Race**, if a tie occurs in an elimination round for the last position in the finals bracket, those horses tied will re-run on time only with the fastest time advancing.

In **timed calf roping, timed heading and heeling, and cutting**, the combined scores (cutting) and times (roping) in the elimination round and the finals will be used to determine the final placing. In the finals, the working order shall be determined by the times (in roping). The horse with the fastest qualifying time (in roping) will be the last to work in the finals for that class. The working order in the finals of any cutting classes will be determined by a random draw of those qualified to compete in the finals. In **timed heading and heeling**, the entrant must have the same helper in both the elimination and final rounds.

Once an elimination round has been held, no change of horse/rider combination or tack/equipment is allowed for the finals.

In most classes, when possible, the top 16 horses will be called back for the finals. In all cutting classes, the top 10 finalists will return for the finals.

AWARDS

RIBBONS & TROPHIES

In all ApHC open and non-pro World Show classes, a Champion trophy will be awarded to all first-place winners and the Reserve Champion trophy awarded to second place. Ribbons will be awarded for 1st through 10th place.

In all limited open World Show classes, a Champion trophy will be awarded to all first-place winners and the Reserve Champion trophy awarded to second place.

Save
the Date!



June 26- July 3, 2024
Oklahoma City Fairgrounds
Oklahoma City Oklahoma

© Buckle
Photography
Editorial

Congratulations

TOP 10

**Celebrate
your success!**

20% Off

ad rates in Winter Issue
Appaloosa Journal

(208) 882-5578 ext. 256 • advertising@appaloosa.com

Ribbons will be awarded for 1st through 3rd place.

MEDALLIONS & NON-PRO MEDALS

All ApHC open classes are medallion classes except green (western riding, western pleasure, trail, hunter under saddle, ranch riding, ranch rail pleasure, ranch trail, ranch reining) classes, ranch horse conformation, limited open classes, Windemere classes, freestyle reining, and stallion service auction futurity classes. There must be at least three entries shown in an open division class for it to be considered eligible for a medallion. See Rule 702.I.3 for further information.

All non-pro classes are medal classes except non-pro yearling longeline (western and hunter), novice cutting, novice games classes, non-pro ranch horse conformation, non-pro walk/trot classes, non-pro yearling in-hand trail, and non-pro performance halter classes. There must be at least 3 horses shown in a non-pro class for it to be considered eligible for a medal. See Rule 903.A for further information.

ESCROW OF AWARDS

All awards and premium/award checks will be issued pending notification of drug testing results. If a horse tests positive for unapproved drugs or unacceptable levels of approved medication(s), all ribbons, trophies, and other awards must be held in escrow by the ApHC until notification of the Disciplinary Committee's decision.

PREMIUM PAYBACK

Halter and Performance classes: \$300 added to each class. Total purse includes \$30 of each entry fee (all horses entered in the class minus those vet scratched). Added money plus entry fee money will be divided as follows: 1st-40%; 2nd-25%; 3rd-15%; 4th-10%; 5th-5%; 6th-5%.

No premium payback will be given in non-pro equitation, horsemanship, showmanship or novice classes. No premium payback will be given in limited open classes. All premium checks will be mailed to the current, first-listed owner or lessee on record only (as determined by ApHC records at the time class is held). Any other arrangements for premium award payments are between trainer and owner(s) and are not the responsibility of the ApHC. When class size is less than 6 entries, all unpaid premiums are retained by the ApHC. For tax purposes, a 1099M for premiums won will be issued to the current owner of record at the time of the show. In the instance of multiple owners, a 1099M will be issued to the first current owner listed on the Certificate of Registration. The social security number listed on the

W-9 form should be that of the owner, or in cases of multiple owners, that of the first listed currentowner.

Premium and/or award checks will be mailed after drug test results are received by the ApHC.

AWARD CALCULATIONS & TIE-BREAKING PROCEDURES

Horses will receive points toward special open and non-pro awards for 1st through 10th place. Placings earned in limited open classes do not count toward any open awards. First place will receive 11 points, 2nd place will receive 9 points, and so on down to last place which will receive 1 point unless otherwise specified. If there are less than 10 horses in a class, scores will be based on the number competing with the 1st place horse receiving one more point than the number of horses in the class, the 2nd place horse receiving 2 fewer points than the 1st place horse and the 3rd place horse receiving 1 less point than the 2nd place horse and so on down to last place which shall receive 1 point unless otherwise specified.

Unless otherwise stated under individual award listing, in the case of a tie, the horse earning points in the greater number of classes that count toward that award will be the winner. If that fails to break the tie, the horse placing 1st through 10th over the greatest number of total entries will be the victor.

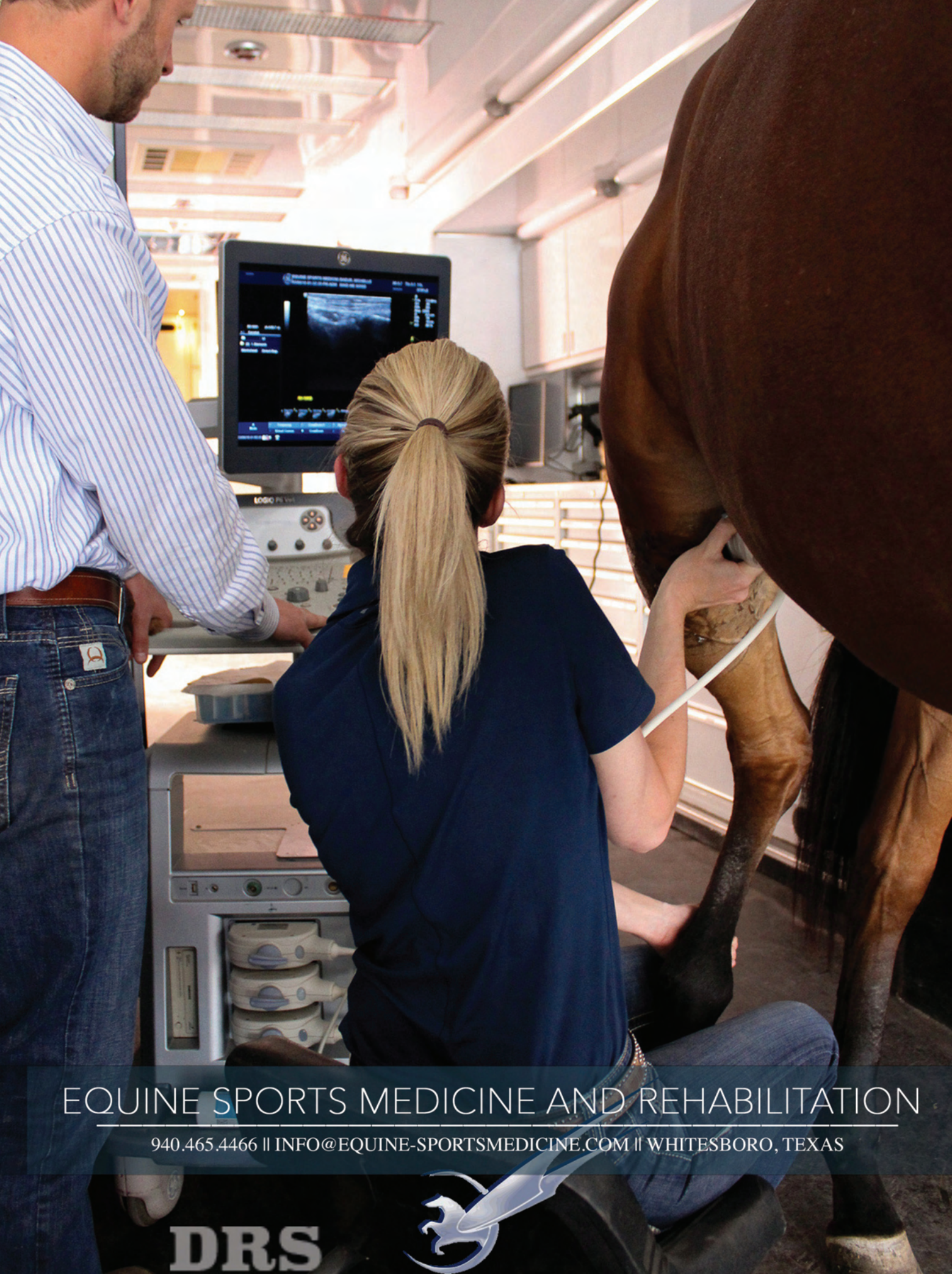
In the case of a tie in the non-pro division, the non-pro earning points in the greater number of classes that count toward the award will be the winner. If that fails to break the tie, the non-pro earning points in the greater number of performance classes will be the winner. If that fails to break the tie, the non-pro placing 1st through 10th over the greatest number of total entries will be the winner.

The ApHC does not accept responsibility for misprints in daily award tabulations. All information is not final until verified.

WORLD'S BEST APPALOOSA

In order to compete for this title, a horse must enter and compete in a minimum of three categories to be eligible. The horse's top two World's Best point earning placings in each of five categories will be used to calculate placing. In addition, the horse must earn World's Best points in a minimum of two categories. Categories for tabulation of World's Best Appaloosa are listed below. ONLY the following classes will be used for tabulation of this award:

- I. Halter (all age divisions except weanlings and FPD



EQUINE SPORTS MEDICINE AND REHABILITATION

940.465.4466 || INFO@EQUINE-SPORTSMEDICINE.COM || WHITESBORO, TEXAS

DRS



- classes), Most Colorful at Halter, Hunter in Hand (except yearling division), and Performance Halter.
- II. Junior & Senior Western Pleasure, Junior & Senior Hunter Hack, Pleasure Driving, Junior & Senior Hunter Under Saddle, and Saddle Seat Pleasure.
 - III. Junior & Senior Reining, Junior & Senior Western Riding, Junior & Senior Trail, Working Hunter, Junior & Senior Ranch Riding, Junior & Senior Ranch Trail, Junior & Senior Ranch Rail Pleasure, Junior & Senior Ranch Reining.
 - IV. Camas Prairie Stump Race, Nez Perce Stake Race, Rope Race, Keyhole Race and Figure 8 Stake Race.
 - V. Steer Daubing, Junior & Senior Cutting, Heading & Heeling, Junior & Senior Judged Tie-Down Roping, Junior & Senior Judged Heading, Junior & Senior Judged Heeling, Timed Tie-Down Roping, Junior & Senior Working Cow Horse.

The following table will be used for tabulating World's Best points:

# Horses	Placing & Points									
	1	2	3	4	5	6	7	8	9	10
3-5	1									
6-8	2	1								
9-11	3	2	1							
12-14	4	3	2	1						
15-17	5	4	3	2	1					
18-20	6	5	4	3	2	1				
21-23	7	6	5	4	3	2	1			
24-26	8	7	6	5	4	3	2	1		
27-29	9	8	7	6	5	4	3	2	1	
30+	10	9	8	7	6	5	4	3	2	1

Ties will be broken in the following manner: 1) The horse placing in the greater number of categories in first through tenth place, then 2) the horse placing in the greater number of classes listed above in first through tenth place, then 3) the horse defeating the greater number of entries in the classes listed above.

The horse named **World's Best Appaloosa** will receive: \$1,500 from the Appaloosa Horse Club, a Schneider's Saddlery embroidered stable sheet and a three-horse gooseneck aluminum trailer with dressing room for one year's use compliments of Twin Cities South Trailer Sales, LLC of Pilot Point, Texas – Gary & Tammy Raak, and a custom-made Harris Trophy Saddle.

The **reserve World's Best Appaloosa** will receive an etched glass commemorative award sponsored by the Appaloosa Horse Club.

CHAMPION CATTLE HORSE

Classes that count toward this award are 141, 142, 161, 162, 181, 182, 220, 231, 232, 236, 237, 240, and 250.

Champion: \$1,000 from the Appaloosa Horse Club and a custom sterling silver Montana Silversmiths belt buckle.

Reserve Champion: Custom sterling silver Montana Silversmiths belt buckle.

CHAMPION WESTERN HORSE

Classes that count toward this award are 341, 342, 343, 361, 362, 381, 382, 421 and 422.

Champion: \$1,000 from the Appaloosa Horse Club and a custom sterling silver Montana Silversmiths belt buckle.

Reserve Champion: Custom sterling silver Montana Silversmiths belt buckle.

CHAMPION ENGLISH HORSE

Classes that count are 401, 402, 430, 441, 442, 460 and 500.

Champion: \$1,000 from the Appaloosa Horse Club, a custom sterling silver Montana Silversmiths belt buckle and a Schneider's Saddlery embroidered stable sheet.

Reserve Champion: Custom sterling silver Montana Silversmiths belt buckle.

CHAMPION GAMES HORSE

Classes that count are 270, 280, 290, 300 and 600.

Champion: \$1,000 from the Appaloosa Horse Club and a custom sterling silver Montana Silversmiths belt buckle.

Reserve Champion: Custom sterling silver Montana Silversmiths belt buckle.

CHAMPION RANCH HORSE

Classes that count are 541, 542, 552, 554, 555, 556, 557, 558 and 559.

Champion: \$1,000 from the Appaloosa Horse Club and a custom sterling silver Montana Silversmiths belt buckle.

Reserve Champion: Custom sterling silver Montana Silversmiths belt buckle.

HIGH-POINT OVER OPEN HORSE OVER FENCES

A custom sterling silver Montana Silversmiths belt buckle will be presented to the high-point over fence horse in the open divisions. Classes that count toward the open award are 401, 402, 500, 520, and 523.

WORLD SHOW LEADING BREEDER

An award will be given to the breeder earning the most points from horses placing in the top ten at the World Championship Show in the classes listed below.

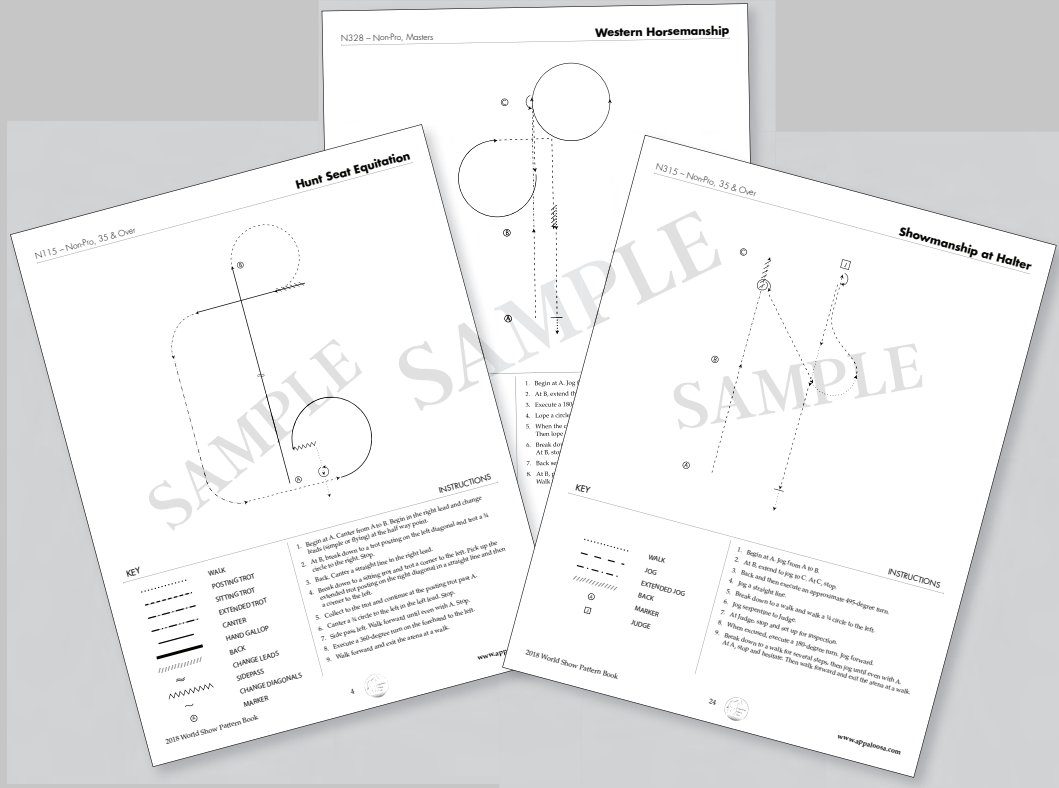
For a breeder to be eligible, at least three of that breeder's horses must be exhibited. The breeder is determined by

2023

WORLD

CHAMPIONSHIP APPALOOSA SHOW

RIDE THE PATTERN



THURSDAY, OCTOBER 26

3 – 5 PM

JOHN JUSTIN ARENA

FREE TO SPECTATORS

GET A LEG UP ON THE COMPETITION BY ATTENDING THIS SEMINAR

WHERE A WORLD SHOW JUDGE WILL TALK THROUGH SELECT HORSEMANSHIP, SHOWMANSHIP AND EQUITATION PATTERNS WITH A DEMO RIDER, OFFERING OPINIONS AND RECOMMENDATIONS FOR PATTERN IMPROVEMENT.

A BRIEF TIME FOR EXHIBITOR QUESTIONS FOR THE JUDGE MAY BE OFFERED

AT THE CONCLUSION OF THE SEMINAR IF TIME ALLOWS.

WWW.APPALOOSA.COM/WORLD-SHOW

ApHC records. For example, John Doe (#123456) may compete against his wife Jane Doe (#654321) and against his farm John & Jane Doe Acres (#111222). The first listed breeder according to ApHC records and as printed on the Certificate of Registration will receive points for that horse's placing. This award will be calculated based upon pre-entries only. Horses will earn points counting toward the Leading Breeder Award for receiving 1st through 10th place. First place will receive 11 points, 2nd place will receive 9 points, and so on through 10th place which will receive 1 point unless otherwise specified. If there are less than 10 entries in a class, points will be computed based on the number competing. However, first place will always receive 2 more points than 2nd place and 2nd place will receive 1 more point than 3rd place and 3rd place will receive one more point than 4th place and so on.

In case of ties, the breeder of horses placing 1st through 10th over the greater number of entries will be the winner. If that fails to break the tie, the breeder of horses placing 1st through 10th in the greatest number of classes will be the winner.

The ApHC does not accept responsibility for misprints in daily award tabulations. All information is not final until verified.

The following open classes will count toward the World Show Leading Breeder Award:

HALTER: O24, O27, O16, O17, O28, O18, O19, O29, O30, O31, O32, O33, O34, O35, O53, O54, O55, O56, O57, O58, O59, O73, O74, O75, O76, O77, O78, O86, O94, O95, O96.

PERFORMANCE: O141, O142, O161, O162, O181, O182, O220, O231, O232, O236, O237, O240, O250, O270, O280, O290, O300, O341, O342, O343, O361, O362, O381, O382, O388, O393, O394, O401, O402, O421, O422, O423, O424, O426, O427, O430, O431, O432, O441, O442, O444, O445, O460, O500, O520, O523, O541, O542, O554, O555, O556, O557, O558, O559, O600.

The Leading Breeder will receive an etched glass award to commemorate this achievement sponsored by the Appaloosa Horse Club.

KAREN GRIMM MEMORIAL OVERALL HIGH POINT EXHIBITOR

An award will be given to the overall high point exhibitor in open classes at the World Show. The exhibitor can show multiple horses. Only open classes count toward this award. Multiple placings may be earned by one exhibitor who is able to show more than one horse in classes in which this is allowed. In this case, all placings

earned by the exhibitor will count toward the award.

Points will be awarded to the exhibitor for 1st through 10th place. First place will receive 11 points, 2nd place will receive 9 points, and so on down to 10th place which will receive 1 point unless otherwise specified. If there are less than 10 horses in a class, scores will be based on the number competing with the 1st place horse receiving one more point than the number of horses in the class, the 2nd place horse receiving 2 fewer points than the 1st place horse and the 3rd place horse receiving 1 less point than the 2nd place horse and so on down to last place which shall receive 1 point unless otherwise specified. The highest point-earning exhibitor based on performance in all open classes will be named the overall high point exhibitor.

In case of a tie, the award will be presented to the exhibitor who 1) competed in the greatest number of classes. If that fails to break the tie, the award will be presented to the exhibitor who 2) defeated the greatest number of entries.

ALL-AROUND NON-PRO

In order to compete for all-around honors, a contestant must compete in at least 3 performance events. They must also compete in 3 or more categories (halter is considered one category). Novice non-pro, 35 & over non-pro, masters non-pro, walk/trot non-pro, Windemere, non-pro yearling in-hand trail and non-pro yearling longeline (western and English) don't count toward these awards.

The winner of the all-around is determined by adding the points earned by each contestant and his/her horse in every approved class in which he/she has placed in the top ten. Points are compiled on a one horse-one exhibitor basis. A contestant may exhibit more than one horse; however, the points earned by the contestant with each will be compiled separately.

Scoring and tie-breakers for this award are outlined under AWARD CALCULATIONS & TIE-BREAKING PROCEDURES above.

No points are awarded to a disqualified contestant, regardless of the number in the class.

Categories for tabulation of the All-Around non-pro are listed below and ONLY the following non-pro classes will count toward this award:

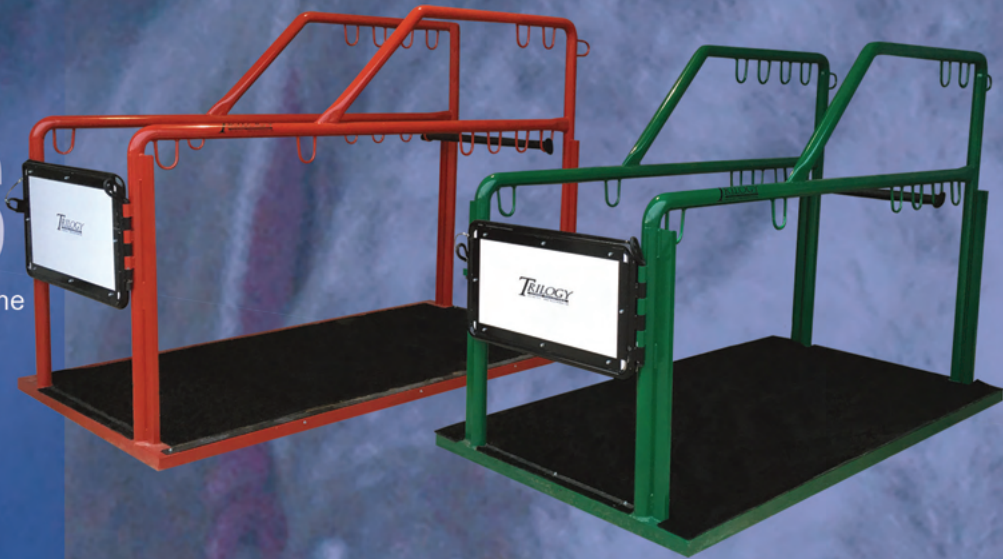
- I. Showmanship at Halter
- II. Bareback Horsemanship, Hunt Seat Equitation, Hunt

Easy Stocks

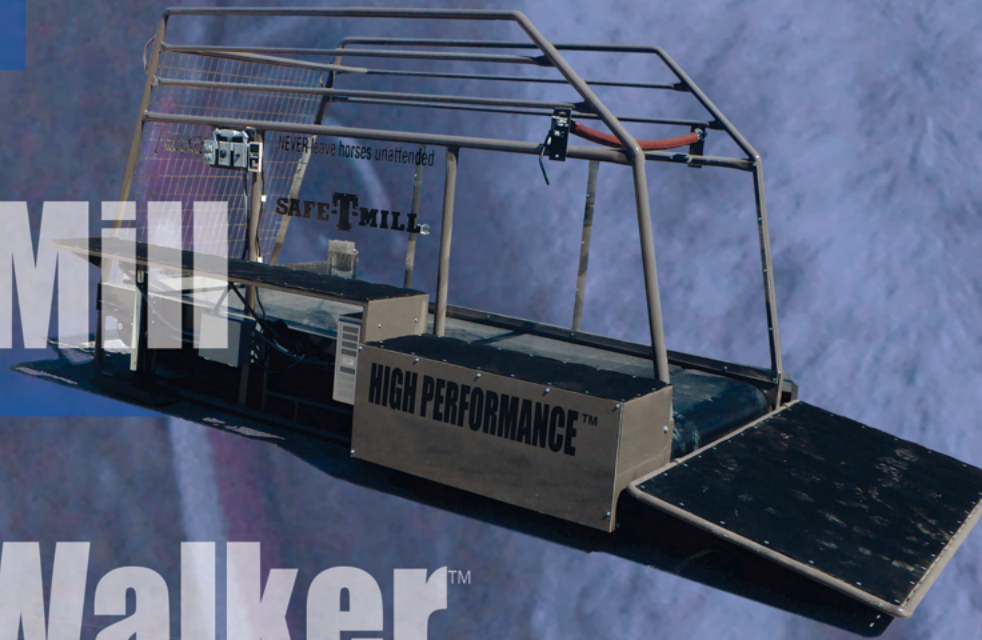
The Most Security Possible for Both the Handler and Horse.

Easy Stocks® can be used for:

- Breeding
- Palpating and Examinations
- Treating Injured Horses
- Giving Vaccinations to Horses
- Washing and Grooming



Safe-T-Mill



Easy Walker™



- Heavy Duty Variable-Speed Motor 0-8 MPH
- Barn Mounted Forward-Stop-Reverse Speed Control Panel
- Low Maintenance
- Quick Release Safety Cable
- Completely Enclosed Cabinet
- 14' to 20' Arms



An Owen Farms Entity



- Seat Equitation Over Fences, Saddle Seat Equitation, Western Horsemanship
- III. Camas Prairie Stump Race, Figure 8 Stake Race, Keyhole Race, Nez Perce Stake Race
 - IV. Hunter Hack, Hunter Under Saddle, Pleasure Driving, Saddle Seat Pleasure, Trail, Western Pleasure, Western Riding, Working Hunter, Ranch Riding, Ranch Trail, Ranch Rail Pleasure
 - V. Cutting, Breakaway Roping, Judged Tie-Down Roping, Judged Heading, Judged Heeling, Timed Tie-Down Roping, Timed Heading & Heeling, Reining, Ranch Reining, Working Cow Horse, Steer Daubing, Boxing
 - VI. Halter (all age divisions), Hunter In Hand (all sex divisions), Most Colorful At Halter, Performance Halter

NON-PRO SPECIAL AWARDS

Novice non-pro classes, 35 & over non-pro classes, masters non-pro classes, non-pro walk/trot classes and non-pro ranch conformation only count toward awards in those respective divisions. They do not count toward any other non-pro special awards.

Non-pro yearling longeline (western and hunter), and non-pro yearling in-hand trail do not count toward any special awards.

A non-pro may use more than one horse and all points will be combined, except where specifically stated. **In classes in which a non-pro can exhibit more than one horse (trail, games, western riding, reining, cutting, roping, ranch riding, ranch trail, over fences etc.) only the non-pro's highest placing in each class will count toward the high-point award.**

APHC ALL-AROUND NON-PRO

\$500 from the Appaloosa Horse Club, a Harris trophy saddle, custom sterling silver Montana Silversmiths belt buckle, and a Schneider's Saddlery embroidered stable sheet.

HIGH-POINT & RESERVE NON-PRO

High-Point: \$250 from the Appaloosa Horse Club, Schneider's Saddlery embroidered stable sheet, a Harris trophy saddle and a custom sterling silver Montana Silversmiths belt buckle.

Reserve High-Point: A custom sterling silver Montana Silversmiths belt buckle and a Schneider's Saddlery embroidered stall front bag.

HIGH-POINT & RESERVE 35 & OVER NON-PRO

High-Point: Custom sterling silver Montana Silversmiths belt buckle and a Schneider's Saddlery embroidered stable sheet.

Reserve High-Point: Custom sterling silver Montana Silversmiths belt buckle and a Schneider's Saddlery embroidered stall front bag.

HIGH-POINT & RESERVE MASTERS NON-PRO

High-Point: Custom sterling silver Montana Silversmiths belt buckle, a Schneider's Saddlery embroidered stable sheet and a three-horse gooseneck aluminum trailer with dressing room (one year's use) compliments of Twin Cities South Trailer Sales LLC of Pilot Point, TX and Gary & Tammy Raak.

Reserve High-Point: Custom sterling silver Montana Silversmiths belt buckle and a Schneider's Saddlery embroidered stall front bag.

HIGH-POINT & RESERVE NOVICE NON-PRO

High-Point: Custom sterling silver Montana Silversmiths belt buckle and a Schneider's Saddlery embroidered stable sheet.

Reserve High-Point: Custom sterling silver Montana Silversmiths belt buckle and a Schneider's Saddlery embroidered stall front bag.

HIGH-POINT & RESERVE WALK/TROT NON-PRO High-

Point: Custom sterling silver Montana Silversmiths belt buckle and a Schneider's Saddlery embroidered stable sheet.

Reserve High-Point: Custom sterling silver Montana Silversmiths belt buckle and a Schneider's Saddlery embroidered stall front bag.

CHAMPION NON-PRO GAMES HORSE

Classes that count are N270, N281, N290, N301. Calculation for this award is a one horse/one rider calculation.

Champion: Custom sterling silver Montana Silversmiths belt buckle

CHAMPION NON-PRO CATTLE HORSE

Classes that count are N456, N380, N390, N410, N420, N440, N450, N600, N610, N620. Calculation for this award is a one horse/one rider calculation.

Champion: Custom sterling silver Montana Silversmiths belt buckle.

CHAMPION NON-PRO RANCH HORSE

Classes that count are N650, N660, N670, N680, N690. Calculation for this award is a one horse/one rider calculation.

Champion: Custom sterling silver Montana Silversmiths belt buckle.

CHAMPION NON-PRO HALTER EXHIBITOR

Classes that count are N503, N504, N505, N506, N507, N513, N514, N515, N516, N517, N523, N524, N525, N526, N527, N540, N550, N560, N570, N508, N518, N528. Calculation for this award is based upon placings for the non-pro who may show multiple horses.

Champion: Custom sterling silver Montana Silversmiths belt buckle and a Schneider's Saddlery embroidered stable sheet.

CHAMPION NON-PRO WESTERN EXHIBITOR

Classes that count are N330, N340, N350 and N370. Calculation for this award is based upon placings for the non-pro who may show multiple horses.

Champion: Custom sterling silver Montana Silversmiths belt buckle and a Schneider's Saddlery embroidered stable sheet.

CHAMPION NON-PRO SHOWMANSHIP/EQUITATION EXHIBITOR

Classes that count are N110, N140, N160, N310, N320, N360. Calculation for this award is based upon placings for the non-pro who may show multiple horses.

Champion: Custom sterling silver Montana Silversmiths belt buckle and a Schneider's Saddlery embroidered stable sheet.

CHAMPION NON-PRO ENGLISH EXHIBITOR

Classes that count are N120, N130, N150, N170, N190. Calculation for this award is based upon placings for the non-pro who may show multiple horses.

Champion: Custom sterling silver Montana Silversmiths belt buckle and a Schneider's Saddlery embroidered stable sheet.

HIGH-POINT NON-PRO HORSE OVER FENCES

A custom sterling silver Montana Silversmiths belt buckle will be presented to the high-point over fence horse in the non-pro division. Classes that count toward the non-pro award are 150, 160 and 170.

NON-PRO SPORTSMANSHIP

Custom sterling silver Montana Silversmiths belt buckle.

CLASS INFORMATION

HERITAGE

All entries in heritage classes must submit a type-written, 14-point font, double-spaced description of their costume. This description must not be more than 200 words, written in third person and submitted to the show office by 5 p.m. the day before the class. This description will be read by the announcer during the class. The ApHC reserves the right to edit content. When the announcer has finished reading the description, each

exhibitor will have one minute (this will be timed) to answer questions posed by the judges or to give additional information about their costume. At the expiration of the one-minute time limit, the judges will move on to the next exhibitor without delay.

Per Motion 17-3-2023, in heritage classes, no paint will be allowed on horses or exhibitors, no symbols shall be marked on the horse's body and no wigs on exhibitors. The ApHC Board of Directors strongly encourages participants to represent a heritage to which they belong and to be respectful of all cultures at all times.

NSBA DUAL-APPROVED CLASSES

Beginning January 1, 2022, all horses competing in any NSBA class (including dual-approved classes) will be required to be registered with NSBA in the current owner's name.

Entry Fee - \$20. There is no post entry charged for NSBA entries. No refunds will be given for NSBA dual-approved class fees.

The ApHC has entered into an agreement with the National Snaffle Bit Association (NSBA) to approve classes for NSBA points and awards. In order to compete for NSBA recognition, the owner and exhibitor of the horse must be NSBA members. These classes will run concurrently with regular ApHC classes. Those exhibitors who wish to compete for NSBA awards and points in the available classes must either complete the NSBA entry form available online, or check the NSBA box under each eligible class using the online entry system. Owners and exhibitors competing for NSBA dual-approved recognition must provide proof of NSBA membership or purchase NSBA membership at the time entries are made.

For a complete list of eligible classes, refer to the schedule in this premium book for classes designated as NSBA-dual approved.

The ApHC will provide class results to NSBA for inclusion in NSBA standings. Those exhibitors receiving first place NSBA honors in these classes will also receive a NSBA trophy or plaque (award is dependent upon the number of NSBA entries in the class the prior year).

To purchase NSBA membership, contact:

National Snaffle Bit Association

4203 Grove Avenue

Gurnee, IL 60031

(847) 623- 6722 phone / (847)625-7435 fax

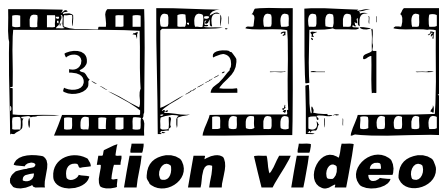
THANK YOU TO OUR SPONSORS!

2023

WORLD

CHAMPIONSHIP APPALOOSA SHOW

STEINERT
RANCH LLC



KELLY HERD

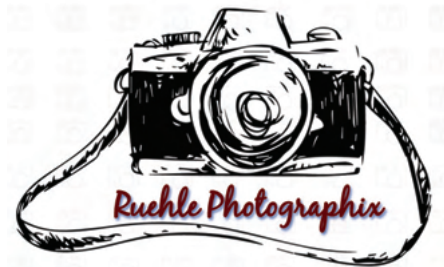


*The Original Designer of
English and Western Jewelry*

BECK



windemere  equestrian



ARENA WERKS



TEAM ROPING (non-pro)

In non-pro judged heading and judged heeling classes, the non-pro will be allowed to rope with any partner of their choosing. Non-pro ropers are not required to team rope with a non-pro member. However, all partners must be members in good standing of the ApHC and must use horses registered with the ApHC. Headers are not allowed to “tie-on” in non-pro judged heeling. All “help horses” must display an ApHC-issued back number.

YEARLING LONGE LINE

See the *Official Handbook of the ApHC* for complete rules. At the World Championship Appaloosa Show, each exhibitor may show a maximum of two horses in each longeline class including open longeline, stallion service auction longeline, non-pro longeline and any specialty association longeline classes.

WINDEMERE HUNTER CLASSIC

High-Point Classes & Calculations

(Round 1) Horses must show in O523 Pre-Green Hunter, O520 Green Hunter or O500 Working Hunter. Or the horse may be shown and count points in N170 Non-Pro Working Hunter or Y360 Youth Working Hunter but only if the horse is not being shown in any open working hunter class. These classes will be considered “Round 1” and each horse may earn points from one class in round 1 toward the overall high-point award standings. If a horse is shown in more than one open class in round 1, they will count points toward the award from the class in which they earned the highest number of points. (Example - if the horse places 1st of 3 horses in one class and earns 4 points and also places 5th in a class of 12 horses thereby earning 6 points, the horse will receive 6 points toward the high-point award in round 1.) Horses shall only count points from non-pro working hunter or youth working hunter toward the high-point award if they are not shown in any of the open classes listed above.

(Round 2) All horses competing for the Windemere Hunter Classic high-point award must enter O528 Windemere Hunter Classic in round 2. This is a working hunter class in which all horses compete against every other horse competing for the high-point award. Fence heights will vary in this class to allow for pre-green and green horses to maintain their class eligibility. The Pre-Green course will include fences ranging in height from 2'6" - 2'9". The Green course will include fences ranging in height from 2'9" - 3'0". The open course will include fences ranging in height from 3'0" - 3'3". The working order in the class will be determined by the fence height at which each

horse jumps. Horses placing 1st through 10th in the Hunter Classic in round 2 will earn points toward the high-point award. This is a non-qualifying class and any horse may enter regardless of whether or not they competed in round 1. Horses ridden by non-pro or youth competitors and not shown in any open classes will jump fence heights corresponding with their non-pro or youth classes.

Payback in this class will be according to Premium Payback rules contained in this premium book except that there will be no added money to the payback purse. Post entry fees apply to horses entered after the pre-entry deadline. All other rules contained in this premium book apply to entries in this class. Ribbons will be awarded through 10th place in this class.

(Round 3) All horses competing for the high-point award will compete in class O529 Windemere Hunter Under Saddle Classic. Horses will be shown at the walk, trot and canter both directions on the rail. Judges may ask for variations of gaits including extended gaits and/or hand gallop. Judges will place this class as a rail class. Trophies and ribbons will be awarded through 10th place in this class. Horses placing 1st through 10th in the Hunter Under Saddle Classic in round 3 will earn points toward the high-point award. This is a non-qualifying class but is limited to horses that competed in the Hunter Classic class in round 2.

The entry fee for this class is \$150. Post entry fee of \$190 is due for those horses entered after the pre-entry deadline. \$100 from each entry fee paid into this class (or \$140 from each post entry fee) will be paid back to the overall top point-earning horses in the Windemere Hunter Classic High-Point Award calculation.

See AWARD CALCULATIONS & TIE-BREAKING PROCEDURES for information on how points are awarded in each class/round toward the high-point award standings.

Awards & Sponsors

Awards will be given to the top 10 point-earning horses based upon calculations from all three rounds.

Sponsorship money received prior to the World Show will be paid back to top point-earning horses in the high-point calculations. In addition, a portion of entry fees from round 3 will be added to the payback purse for the overall high-point winners.

Additional information on payback and awards will be

Preferred Ft Worth Hotels

These hotels are waiting to serve participants and spectators!



SHERATON FORT WORTH DOWNTOWN

1701 Commerce Street
817.335.7000
(888) 287-9400

- 9 minutes from Will Rogers Memorial Center
- Chef's Table restaurant on-site, open until midnight daily
- On-site surface parking, can accommodate large vehicles-\$25 per night
- Indoor pool & fitness center
- Minutes from Sundance Square shopping & entertainment district

\$119/NIGHT PLUS APPLICABLE TAXES

Reserve by 9/11/23

FORT WORTH FAIRFIELD INN & SUITES

1505 South University Drive
(817) 335-2000

- Less than five minutes from WRMC
- Within walking distance of more than 15 restaurants
- Grab and Go breakfast
- Guest Laundry
- Free internet, exercise room, indoor pool, Jacuzzi

\$114/NIGHT PLUS APPLICABLE TAXES

Reserve by 9/27/23

COURTYARD FORT WORTH UNIVERSITY DRIVE

3150 Riverfront Drive
(800) 321-2211 or (817) 335-1300

- Less than 5 minutes from Will Rogers Complex
- Complimentary "Grab & Go" breakfast
- Pool
- Free high-speed internet access
- FREE Parking

\$129/NIGHT PLUS APPLICABLE TAXES

Reserve by 10/1/23

RESIDENCE INN FW CULTURAL DISTRICT

2500 Museum Way
(817) 885-8250

- 5 minutes from Will Rogers Complex
- Free Parking & Wi-Fi
- Complimentary hot breakfast
- Fully furnished kitchen

\$139/NIGHT PLUS APPLICABLE TAXES

Reserve by 10/5/23

HOME2 SUITES BY HILTON

1145 University Drive
(682) 707-9475

- Across the Street from Will Rogers Memorial Center
- Complimentary "Grab & Go" breakfast
- Fully furnished kitchen
- Free parking & Wi-Fi
- Pet Friendly
- On-site laundry

\$139/NIGHT PLUS APPLICABLE TAXES (1 QUEEN STUDIO SUITE)

\$159/NIGHT PLUS APPLICABLE TAXES (2 QUEEN STUDIO SUITE)

Reserve by 10/4/23

available at the World Show as the breakdown is dependent upon the number of horses entered.

# Horses	Placing	Payout Percentage				
1	1	100%				
2-5	2	60%	40%			
6-9	3	45%	35%	20%		
10-13	4	40%	30%	20%	10%	
14-18	5	34%	27%	20%	10%	9%

TWO-YEAR-OLD SNAFFLE BIT ELIGIBILITY

The ApHC Board of Directors voted to allow exhibitors to show their two-year-old horses in a maximum of three classes at the World Show (including two-year-old snaffle bit/hackamore classes) without affecting the horse's two-year-old hackamore/snaffle bit eligibility (eligibility is determined on day one of the World Show). In order for a non-pro exhibitor to show a two-year-old horse that they own in any non-pro class, the non-pro exhibitor must be qualified or otherwise eligible to compete in that class.

NON-PRO WALK/TROT ELIGIBILITY

The ApHC Board of Directors voted to make the following rule change effective immediately for the 2023 World Show and this rule will appear in the 2024 *Official Handbook of the ApHC*.

900. NON-PRO ENROLLMENT AND PARTICIPATION RULES

H. CHANGE OF STATUS A professional continues to be such until he/she has received non-pro status from the ApHC Show Department. Any person who has been a professional and who desires to be reclassified as a non-pro on the grounds that he/she no longer engages in the activities which made him/her a professional, must so notify the ApHC in writing. The applicant must have not engaged in such professional activities for a period of at least three years prior to the date of application in order to obtain non-pro status. The burden of proving non-pro status is on the applicant, who must file a notarized application supported by two or more notarized letters from ApHC current active members outlining the applicant's activities during the non-professional period and testifying that the applicant has not engaged in any activities which would make him/her a professional during said time period. Any exhibitor having received prize money in any Equitation or Showmanship class who wishes to obtain non-pro status must file the same application. A professional reclassified as a non-pro is not eligible to show as a novice **nor in non-pro walk/trot classes.**

WORLD CHAMPIONSHIP APPALOOSA SHOW for EQUESTRIANS WITH DISABILITIES

The Appaloosa Horse Club in conjunction with the Appaloosa Foundation (a charitable 501(c)(3) organization) are sponsoring classes for equestrians with disabilities. There are 19 available classes that will be held Friday and Saturday, November 4-5 in the W.R. Watt and John Justin Arenas at the Will Rogers Memorial Center. This event is open to all breeds of horses. Exhibitors must be a member of ApHC to compete. Those exhibitors wishing to compete for NSBA awards must also be NSBA members.

There are classes available for a variety of rider skill levels and including a Veteran's division.

There is no entry fee to participate. Stall fees must be paid for each horse entered which can then be shown by multiple exhibitors during the show.

The entry forms and stall forms are available on the ApHC web site at www.appaloosa.com.

AWARDS: World Champion trophy & champion jacket in each class, Reserve World Champion trophy in each class, ribbons to top 10 in each class.

For more information, please visit the ApHC web site at <https://www.appaloosa.com/world-show> for updated information, show & class sponsors and entry forms.

ALL DONATIONS TO SUPPORT THIS EVENT SHOULD BE MAILED TO APPALOOSA HORSE CLUB, DIRECTED TO THE APPALOOSA FOUNDATION AND ARE TAX DEDUCTIBLE.

LIMITED OPEN CLASSES

The Appaloosa Horse Club is offering a limited open class that will run concurrently with most open classes at the World Show. Please see the schedule posted online or in this premium book for specific class information. Limited open classes are not offered in FPD Halter, Men's or Ladies' Western Pleasure or Yearling In-Hand Trail. NSBA dual-approval is not offered in the limited open classes.

CLASS FEES

Class fees are the same fee (both pre- and post-) to enter the concurrently held open class. Equipment and cattle fees are only due one time if entering in both the limited and open classes.

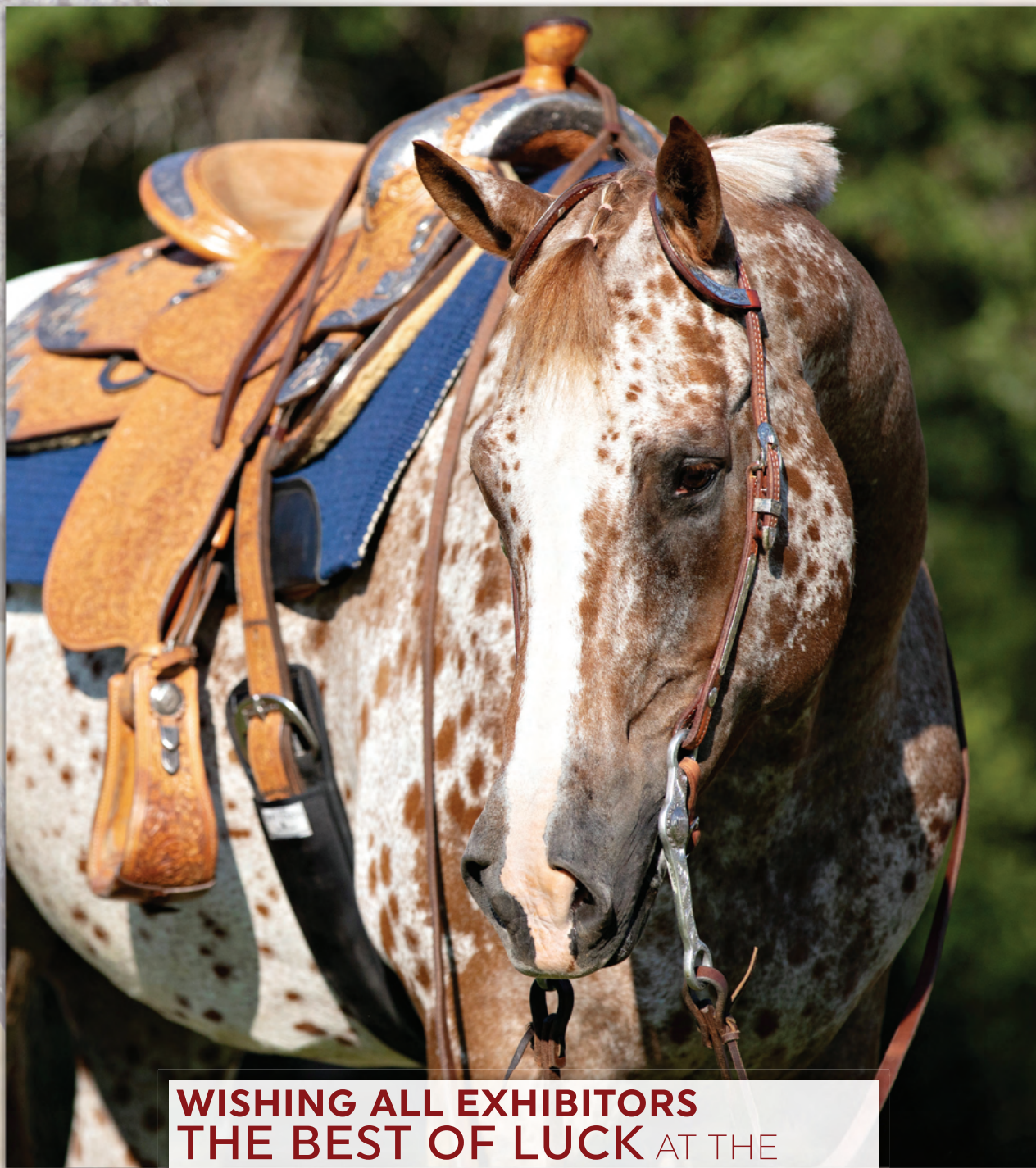
EXHIBITOR ELIGIBILITY

Any exhibitor is eligible for limited open who has NOT won a World Championship or National Championship title (in a given set of classes) in the past three years and/or has NOT won five or more World or National



STATE LINE TACK®

We make riding affordable.™



**WISHING ALL EXHIBITORS
THE BEST OF LUCK AT THE
WORLD CHAMPIONSHIPS**

We are a proud sponsor of the ApHC

As a participating member of the Appaloosa Horse Club, when you shop with us,
you'll receive 30% off your order PLUS we will donate 7% back to the ApHC!

Simply use the code PAAPHC30.

StateLineTack.com

Championship titles in total (in that set of classes). Read below for definition of “set of classes”.

“Title” refers to a champion (1st) or reserve champion (2nd) placing in any open or limited open division class at an ApHC-sponsored show or at another breed’s or horse show association’s National Championship, World Championship, or Congress. Non-pro and youth titles do NOT count toward limited open eligibility requirements.

An exhibitor in the limited open class may also, but is not required to enter the open class.

All limited open exhibitors must be eligible to show at the ApHC World Show according to requirements listed in **OWNERSHIP & MEMBERSHIP** in this premium book.

Exhibitors can verify limited eligibility (based only upon ApHC-sponsored event history) by clicking on this link and entering your membership number - <https://www.appaloosa.com/LimitedEligibility>. Please check limited eligibility in advance of entering a limited class as refunds will not be issued except for vet scratches that meet all requirements as detailed in **VET SCRATCHES/REFUNDS** in this premium book. Exhibitors are responsible for determining their own limited eligibility based on competition at outside breed and/horse show association events. Complaints concerning limited eligibility may be filed against an exhibitor in accordance with rule 20.D and if found to be ineligible, the exhibitor is subject to disciplinary action and penalties.

Limited eligibility is based upon the exhibitor’s eligibility as of January 1 of the current year. Any titles earned in the current year do not affect limited status for this World Show but will be counted toward limited status in the coming year.

HORSE ELIGIBILITY

Entry into the limited class only does not waive any qualifying or eligibility requirements as required to enter the open class. All horses shown in all open and/or limited open classes must be qualified or otherwise eligible to show in the open class.

AWARDS

In all limited open World Show classes, a Champion trophy will be awarded to the first-place winner and the Reserve Champion trophy awarded to second place. Ribbons will be awarded for 1st through 3rd place.

CLASS CONDUCT

All limited classes will run concurrently with the open

class and placed separately against only those entries in the limited class, with the *possible* exceptions of rail classes (hunter under saddle, western pleasure, ranch rail pleasure), horse-against-horse games classes (Nez Perce stake race, camas prairie stump race), timed tie-down roping and timed heading & heeling. See **Post Entry** below for additional information on rail classes. See **Horse Against Horse** for information on class conduct in horse against horse games classes. See **Timed Roping** for information on class conduct in timed roping classes.

POST ENTRY

In rail classes (hunter under saddle, western pleasure, ranch rail pleasure), **post entries in both the open and limited division of the class are DUE BY 6 P.M. TWO DAYS PRIOR TO THE OPEN CLASS AND ONE DAY BEFORE THE TENTATIVELY SCHEDULED LIMITED CLASS.** If at that time there are 22 or fewer entries in the combined (open and limited open) class, those classes will run concurrently on the day the open class is scheduled to be held. If there are 23 or more entries, the limited class will be held the following day as scheduled and the open class will be held two days later as appears in the schedule.

Example: Limited Open Senior Western Pleasure is tentatively scheduled for Friday, October 27. Open Senior Western Pleasure is scheduled for Saturday, October 28. ALL post entries for senior western pleasure (open AND limited open) are due by 6 p.m. on Thursday, October 26 – one day before the limited class and two days before the open class. At that time, if there are 22 or fewer total entries, the limited open class will not be held on October 27 and all entries will compete concurrently on October 28. However, if at that time there are 23 or more total entries, those entered in the limited class will compete on October 27 and those entered in the open class (which may include limited exhibitors who are dual entered in both the limited and open classes) will compete on October 28.

In all other limited classes, post entries are due by 6 p.m. the day prior to the day the class is scheduled.

POST ENTRY DEADLINE - RAIL CLASSES

See below for post entry deadlines for rail classes which are due by 6 p.m. on the dates listed below:

O422 – Senior Western Pleasure – due 10/26
O447 – Green Hunter Under Saddle – due 10/27
O559 – Senior Ranch Rail Pleasure – due 10/27
O442 – Senior Hunter Under Saddle – due 10/27
O421 – Junior Western Pleasure – due 10/27
O558 – Junior Ranch Rail Pleasure – due 10/28

INTRODUCING

The Limited Open Division

To be run concurrently
with the Open Division
Classes*

2023
WORLD
CHAMPIONSHIP APPALOOSA SHOW

October 27- November 4



All riders
are eligible
to sign up for
Limited Open,
Open, or Both
Unless the rider has won
a title in the class in the past
3 years or has won more than
5 titles in that class.*



*See full rules in the Premium Book

O441 – Junior Hunter Under Saddle – due 10/28

O425 – Green Western Pleasure – due 10/31

O563 – Green Ranch Rail Pleasure – due 11/1

HORSE AGAINST HORSE

In O280 - Camas Prairie Stump Race and O300 - Nez Perce Stake Race, all limited open and open entries will run in the elimination round to establish a qualifying time for the horse against horse brackets. The fastest 16 times for those entered in the open class will be used to seed the bracket for the open final and a 16-horse or 8-horse bracket (depending upon total entries) will be conducted to determine the top 10 in the open class. If there is only 1 limited entry, no additional limited bracket will be run and that limited entry (as long as they had a qualifying time in the elimination round) will be named the limited open champion.

If there are 2 or more limited entries, the fastest 8 limited times from the elimination round will be seeded in an 8-horse bracket. The limited open finals bracket will be held that same day. The entries that lose their first horse-against-horse race in the limited open bracket will be eliminated leaving the 4 entries that won their first horse-against-horse race in the bracket to run for the final top 3 limited open awards. See rules 727 and 728 for additional rules regarding horse against horse competition and brackets.

TIMED ROPING

In O220 – Timed Tie-Dow Roping and O240 – Timed Heading & Heeling, ropers must get a qualified time in the elimination round to be eligible to come back and rope in the finals. A maximum of the top 16 open riders and the top 8 limited riders will return for a combined final round. Limited riders will only place against those entered in the limited class. Open riders will only place against those entered in the open class.

HORSE/EXHIBITOR CHANGES

Horse changes in open and limited open classes **are not allowed**.

Exhibitor changes are allowed in open and limited open classes under the following conditions:

- If a horse is entered only in the limited class, an exhibitor change can be made as long as the new exhibitor is also eligible for limited. If the new exhibitor is not limited-eligible, the horse must be scratched from the limited class. In this case, unless a properly completed vet scratch is received, no refunds will be issued for class entry fees.

- If the horse is entered only in the limited class, an exhibitor change can be made but if the new exhibitor is not limited-eligible, the horse must be scratched from the limited class and post-entered in the open class with the new exhibitor. This post entry must be made either by 5 p.m. the day prior to the class, or in the case of rail classes must be made according to the schedule above in **Post Entry Deadline - Rail Classes**.
- If the horse is only entered in the open class, an exhibitor change can be made as stipulated in this premium book under **SUBSTITUTIONS**.
- If the horse is only entered in the open class, an exhibitor change can be made and if the new exhibitor is limited-eligible, the horse can be post entered in the limited class. This post entry must be made either by 5 p.m. the day prior to the class, or in the case of rail classes must be made according to the schedule above in **Post Entry Deadline - Rail Classes**.
- If the horse is entered in both the limited and open classes with a limited exhibitor, an exhibitor change can be made. If the new exhibitor is not limited-eligible, the horse must be scratched from the limited class but may still show in the open class.
- The same exhibitor **MUST** exhibit the horse in both the limited and open classes, even in rail classes in which a limited class **MAY** be held separately.

SET OF CLASSES

A “set of classes” refers to a grouping of classes in which the exhibitor exhibits a particular skill set.

Example: if competing in limited open yearling geldings, the limited status of the exhibitor would be dependent upon that exhibitor meeting the limited requirements based upon their past competition in all open halter classes (geldings, mares, stallions, most colorful at halter, halter futurity classes, performance halter etc.) but would not be determined by their past titles in hunter in hand or ranch conformation.

Click on the link below for a complete list of class sets (including class numbers) affecting limited status within those class sets.

<https://sub.appaloosa.com/pdfs/LimitedPointsClassList.pdf>

CONTACT INFORMATION

Appaloosa HorseClub
2720 W Pullman Road Moscow, ID 83843
(208) 882-5578 Phone
(208) 882-8150 Fax
www.appaloosa.com
showsecretary@appaloosa.com

Use the following address to ship **PRIOR** to the show:
Will Rogers MemorialCenter
c/o Appaloosa World Show
3401 West Lancaster Ave Fort Worth, TX 76107
(817) 871-8150 Phone
(817) 871-8170 Fax

Use the following address to ship **DURING** the show:
Will Rogers MemorialCenter
c/o Appaloosa World Show
1501 Rip Johnson Dr
Fort Worth, TX 76107



Gay Bars Silver Incentive

\$750 added purse

Open Junior Working
Cow Horse

Proudly Sponsored By:

No Additional Fees!

Full purse will go to
the top placing 3 year
old!

TOPPALOOSAS



You must have your
NSBA membership
number in order to enter
NSBA dual-approved

NSBA

**Dual-Approved
Classes**

Many classes at the
2023 World Championship Show
are dual approved by NSBA.

Trophies for first place are awarded to the top entrant that is dual-entered
in the NSBA portion of the class. Exhibitors must be current NSBA members to
compete in the NSBA portion of these classes.

Call (847) 623-6722
to purchase an NSBA membership
or go to
www.nsba.com/membership
to purchase one online

**NSBA
New Rule**

Starting January 1, 2022,
all horses competing in any NSBA class
(including dual-approved classes)
will be required to be registered with NSBA
in the current owner's name.



2023 **WORLD**
CHAMPIONSHIP APPALOOSA SHOW

DON'T MISS OUT
ON THE WEBCAST!

If you can't make it to the show,
watch the webcast at
www.appaloosa.com/national-show

Place an ad on the webcast to advertise
your business, farm, stallion,
training services, or just to wish good luck
to a special exhibitor.

Click here to schedule your ad:
www.appaloosa.com/purchasewebcamad

SHOW OFFICIALS

Executive Director	Kristopher Byrd
Director of Performance & Events	Keri Minden-LeForce
Director of Marketing	Amber Miller
Director of Advertising	Dee Dee Douglas
Arena Manager	Jack Owen
Show Secretary / Judges' Coordinator	Sarah Allenby
Awards Coordinator	Amber Alsterlund
Scoring	ApHC I.T. Staff
Stall Office	Tammy Blakely (day) /Chris Blakely (night)
Announcers	Denny Oviatt, Georgianna Renouard. Clark Scoggin
Drug Testing Veterinarian	Jeff Pollock, D.V.M

SHOW SERVICES

Show Veterinarian	Equine Sports Medicine
Farrier	David Wiggin
Photographer	Ruehle Photographix LLC
Videographer	3 2 1 Action Video
Over Fences Course Equipment & Design	Tucker Williams, Classy Courses, Inc.
Trail Class Design	Robert Dehn

OFFICIAL JUDGES

Amy Watkins	Bow, NH
Brent Woolery	Platteville, CO
Bruce Army	Nashville, IN
Charlene Carter	Goodlettsville, TN
David Terrell	Millington, TN
Jill Paxton	Ankeny, IA
Kathy Boggetta	Hartland, MI
Keith Longacre	Glenpool, OK
Kevin Jewell	Conyers, GA
Mark McCarthy	Longmont, CO

NCHA CUTTING JUDGES

TBA

RING STEWARDS

Alan Henderson	Lafayette, NJ
Cheryl Ogle	Moscow, TN
Debbie McMasters	Madison, TN
John Tabb	Greenbrier, TN
Nico Perrin	Neuilly, LeReal France
Ron McMillian	Collinsville, OK

EQUIPMENT JUDGES

Cindy Chilton-Moore	Broken Arrow, OK
Delena Doyle	Stephenville, TX
Sherry Haynes	Stephenville, TX



2023 World Championship Appaloosa Show Tentative Class Schedule

Wednesday, October 25

7:30 AM - 24 hours

Stall Office Open – R/B Building

Horses Move-In – WRMC

Vendors Move-In –WRMC

Thursday, October 26

8:00 AM – 5:00 PM

Show Office Open – R/B Building

Check-in to pick up exhibitor numbers and packets

Inspection Station Open – Burnett Building

3:00 PM – 5:00 PM

Ride the Pattern Seminar – John Justin Arena

4:00 PM – 24 hours

At-Will Trail Practice – Multi-Purpose Building

8:00 AM

USCHA Cutting- W.R.Watt Arena

✓ indicates NSBA dual-approved class

* indicates ApRHA sweepstakes class

Friday, October 27

Proudly sponsored by Ruehle Photographix LLC

8:30 AM

JOHN JUSTIN ARENA

- H004 Appaloosa Halter Futurity Weanling Fillies, Non-Pro
- H002 Appaloosa Halter Futurity Weanling Fillies, Open
- H008 Appaloosa Halter Futurity Yearlings (all sexes), Non-Pro
- H003 Appaloosa Halter Futurity Weanling Colts & Geldings, Non-Pro
- H001 Appaloosa Halter Futurity Weanling Colts & Geldings, Open
- P016 APPsolute Sires SSA Yearling Fillies
- P017 APPsolute Sires SSA Yearling Colts & Geldings

RE-SET ARENA

	Pre Entry	Limited Pre Entry	Equip/ Cattle	Optional NSBA
✓O555 Senior Ranch Riding (<i>Open/Limited Open</i>) *	150	150		20
O393 Men's Heritage (<i>Open/Limited Open</i>)	150	150		
O460 Saddle Seat Pleasure (<i>Open/Limited Open</i>)	150	150		
O541 Junior Ranch Reining (<i>Open/Limited Open</i>) *	150	150		
✓N120 Non-Pro Hunter Under Saddle	150			20
O342 Senior Reining (<i>Open/Limited Open</i>)	150	150		

2022 World Championship Appaloosa Show

Tentative Class Schedule cont.

O423	Men's Western Pleasure	150			
N110	Non-Pro Hunt Seat Equitation	115			
✓O422	Senior Western Pleasure (<i>Limited Open</i>)- <i>If needed Hunter Hack Practice</i>				<i>See Saturday 10/28</i>

7:30 AM

WILL ROGERS COLISEUM

✓O382	Senior Trail (<i>Open/Limited Open</i>)	150	150	40	20
✓O381	Junior Trail (<i>Open/Limited Open</i>)	150	150	40	20
✓O385	Green Trail (<i>Open/Limited Open</i>) (NEW)	150	150	40	20

RE-SET ARENA

O290	Figure 8 Stake Race (<i>Open/Limited Open</i>)	150	150		
N297	Non-Pro Walk/Trot Figure 8 Stake Race	150			
N299	Non-Pro Novice Figure 8 Stake Race	115			
N290	Non-Pro Figure 8 Stake Race	150			

4:00 PM

Multi-Purpose Building

At-Will Trail Practice

7:30 AM

W.R. WATT ARENA

C015	ApCHA Ranch Cutting				
C002	ApCHA Three-Year-Old Cutting Futurity, FIRST GO				
C004	ApCHA Five & Six-Year-Old Cutting Classic				
C010	ApCHA Masters Non-Pro Jane Norman Memorial Cutting				
O141	Junior Cutting - ELIMINATIONS (<i>Open/Limited Open</i>)	150	150	225	
O142	Senior Cutting - ELIMINATIONS (<i>Open/Limited Open</i>)	150	150	225	
N380	Non-Pro Cutting - ELIMINATIONS	150		225	
N389	Novice Non-Pro Cutting	115		140	

USCHA Cutting

Saturday, October 28

7:30 AM

JOHN JUSTIN ARENA

		Pre Entry	Limited Pre-Entry	Equip/ Cattle	Optional NSBA
✓O17	Hunter in Hand, Four & Older Mares (<i>Open/Limited Open</i>)	150	150		20
✓O19	Hunter in Hand, Four & Older Geldings	150	150		20
✓O24	Hunter in Hand, Two & Older Stallions	150	150		20
N503	Non-Pro Weanling Colts	150			
N504	Non-Pro Yearling Colts	150			
N505	Non-Pro Two-Year-Old Stallions	150			
N506	Non-Pro Three-Year-Old Stallions	150			
N507	Non-Pro Aged Stallions	150			
O542	Senior Ranch Reining (<i>Open/Limited Open</i>) *	150	150		
✓O402	Senior Hunter Hack (<i>Open/Limited Open</i>)	150	150	25	20
✓O554	Junior Ranch Riding (<i>Open/Limited Open</i>) *	150	150		20
N378	Masters Non-Pro Reining	150			

2023 World Championship Appaloosa Show

Tentative Class Schedule cont.

✓O401	Junior Hunter Hack (<i>Open/Limited Open</i>)	150	150	25	20
✓N150	Non-Pro Hunter Hack	150		25	20
✓O422	Senior Western Pleasure (<i>Open/Limited Open</i>)	150	150		20
O343	Hackamore/Snaffle Bit Reining (<i>Open/Limited Open</i>)	150	150		
O424	Ladies' Western Pleasure	150			
✓O447	Green Hunter Under Saddle (<i>Limited Open</i>) - <i>if needed</i>			<i>See Sunday, 10/29</i>	
✓O559	Senior Ranch Rail Pleasure (<i>Limited Open</i>) * - <i>if needed</i>			<i>See Sunday, 10/29</i>	
✓O442	Senior Hunter Under Saddle (<i>Limited Open</i>) - <i>if needed</i>			<i>See Sunday, 10/29</i>	
N130	Non-Pro Saddle Seat Pleasure	150			
N140	Non-Pro Saddle Seat Equitation	115			
O421	Junior Western Pleasure (<i>Limited Open</i>) - <i>if needed</i>			<i>See Sunday, 10/29</i>	

8:30 AM

WILL ROGERS COLISEUM

O388	Yearling In-Hand Trail	150		45	
N353	Non-Pro Yearling In-Hand Trail	150		45	
✓N350	Non-Pro Trail	150		45	20
N355	Non-Pro 35 & Over Trail	150		45	
✓N358	Masters Non-Pro Trail	150		45	20
✓N359	Novice Non-Pro Trail	150		45	20
N357	Non-Pro Walk/Trot Trail	150		45	

RE-SET ARENA

N277	Non-Pro Walk/Trot Keyhole Race	150			
O270	Keyhole Race (<i>Open/Limited Open</i>)	150	150		
N279	Non-Pro Novice Keyhole Race	115			
N270	Non-Pro Keyhole Race	150			

7:30 AM

W.R. WATT ARENA

C002	ApCHA Three-Year-Old Cutting Futurity	FINALS			
C001	ApCHA Four-Year-Old Cutting Derby				
O142	Senior Cutting (<i>Open/Limited Open</i>)	FINALS			
C005	ApCHA Non-Pro Bonanza				
O141	Junior Cutting (<i>Open/Limited Open</i>)	FINALS			
C007	ApCHA 7 & Up Cutting				
N380	Non-Pro Cutting	FINALS			
C003	ApCHA Limited Rider				

USCHA Cutting

Sunday, October 29

Proudly sponsored by Taylor Pearson Show Horses

9:00 AM

WEST SALE ARENA

Cowboy Church

2023 World Championship Appaloosa Show

Tentative Class Schedule cont.

8:30 AM

JOHN JUSTIN ARENA

		Pre Entry	Limited Pre-Entry	Equip/ Cattle	Optional NSBA
N310	Non-Pro Showmanship	115			
N523	Non-Pro Weanling Geldings	150			
N524	Non-Pro Yearling Geldings	150			
N525	Non-Pro Two-Year-Old Geldings	150			
N526	Non-Pro Three-Year-Old Geldings	150			
N527	Non-Pro Aged Geldings	150			
N540	Non-Pro Most Colorful at Halter	150			
✓O447	Green Hunter Under Saddle (<i>Open/Limited Open</i>)	150	150		20
O161	Junior Working Cow Horse (<i>Open/Limited Open</i>)	150	150	75	
✓O559	Senior Ranch Rail Pleasure (<i>Open/Limited Open</i>) *	150	150		20
O394	Ladies' Heritage (<i>Open/Limited Open</i>)	150	150		
✓O559	Senior Ranch Rail Pleasure (<i>Open/Limited Open</i>) *	FINALS			
✓O421	Junior Western Pleasure (<i>Open/Limited Open</i>)	150	150		20
N456	Non-Pro Boxing	150		75	
✓O442	Senior Hunter Under Saddle (<i>Open/Limited Open</i>)	150	150		20
✓O558	Junior Ranch Rail Pleasure (<i>Limited Open</i>) * - if needed	See Monday, 10/30			
✓O441	Junior Hunter Under Saddle (<i>Limited Open</i>) - if needed	See Monday, 10/30			

4:00 PM

Exhibitor's Appreciation Social

WILL ROGERS COLISEUM

5:00 AM

Over Fences Paid Practice

7:30 AM

O523	Pre-Green Hunter (<i>Open/Limited Open</i>)	150	150	45	
✓N170	Non-Pro Working Hunter	150		45	20
✓O520	Green Hunter (<i>Open/Limited Open</i>)	150	150	45	20
N160	Non-Pro Hunt Seat Equitation Over Fences	115		45	
✓O500	Working Hunter (<i>Open/Limited Open</i>)	150	150	45	20
O528	Windemere Hunter Classic	150		45	
O529	Windemere Hunter Under Saddle Classic	150			
AWARD	Windemere Hunter Classic Top 10 Presentation				
AWARD	High Point Over Fences Horse				
AWARD	High Point Non-Pro Over Fences Horse				

RE-SET ARENA

O300	Nez Perce Stake Race - ELIMINATIONS (<i>Open/Limited Open</i>)	150	150		
N309	Non-Pro Novice Nez Perce Stake Race – ELIMINATIONS	115			
O300	Nez Perce Stake Race (<i>Open/Limited Open</i>)	FINALS			
N309	Non-Pro Novice Nez Perce Stake Race	FINALS			
O300	Nez Perce Stake Race (<i>Limited Open</i>) - If Needed	FINALS			

2022 World Championship Appaloosa Show

Tentative Class Schedule cont.

8:00 AM

W.R. WATT ARENA
USCHA Cutting

Monday, October 30

7:30 AM

	Pre Entry	Limited Pre-Entry	Equip/ Cattle	Optional NSBA
JOHN JUSTIN ARENA				
N450 Non-Pro Working Cow Horse	150		75	
N513 Non-Pro Weanling Fillies	150			
N514 Non-Pro Yearling Fillies	150			
N515 Non-Pro Two-Year-Old Mares	150			
N516 Non-Pro Three-Year-Old Mares	150			
N517 Non-Pro Aged Mares	150			
O162 Senior Working Cow Horse (<i>Open/Limited Open</i>)	150	150	75	
✓N330 Non-Pro Western Pleasure	150			20
✓O430 Pleasure Driving (<i>Open/Limited Open</i>)	150	150		20
✓N190 Non-Pro Pleasure Driving	150			20
O341 Junior Reining (<i>Open/Limited Open</i>)	150	150		
N320 Non-Pro Western Horsemanship	115			
AWARD Champion Non-Pro English Exhibitor				
✓N348 Masters Non-Pro Western Riding	150			20
✓N340 Non-Pro Western Riding	150			20
✓O558 Junior Ranch Rail Pleasure (<i>Open/Limited Open</i>)	150	150		20
✓O441 Junior Hunter Under Saddle (<i>Open/Limited Open</i>)	150	150		20

7:30 AM

WILL ROGERS COLISEUM

N318 Masters Non-Pro Showmanship	115			
✓O028 Hunter in Hand, Yearling Fillies (<i>Open/Limited Open</i>)	150	150		20
✓O029 Hunter in Hand, Yearling Geldings (<i>Open/Limited Open</i>)	150	150		20
✓O027 Hunter in Hand, Yearling Colts (<i>Open/Limited Open</i>)	150	150		20

RE-SET ARENA

N307 Non-Pro Walk/Trot Nez Perce Stake Race	150			
N301 Non-Pro Nez Perce Stake Race – ELIMINATIONS	150			
N301 Non-Pro Nez Perce Stake Race	FINALS			

2:00 PM

Multi-Purpose Building

At-Will Ranch Trail Practice – Multi-Purpose Building

Kensington



Uviator
90% UV
Protection



Uviator - CatchMask Fly Mask
w/Ears, Removable Nose, Forelock
Opening, and 90% UV Protection



Uviator - Dartless Fly Mask
w/Web Trim, Soft Ears, Forelock
Opening, and 90% UV Protection

Give them the best protection in
the industry with Kensington's
90% UV Blocking Uviator
Fly Mask.

www.kensingtonproducts.com

ApHC Members Receive:

**20%OFF
ORDERS**

Now Through
4/1/2024

Enter Code:
KPP23APHC

2022 World Championship Appaloosa Show

Tentative Class Schedule cont.

Tuesday, October 31

7:30 AM

	Pre Entry	Limited Pre-Entry	Equip/ Cattle	Optional NSBA
JOHN JUSTIN ARENA				
✓O557 Senior Ranch Trail (<i>Open/Limited Open</i>) *	150	150	45	20
✓O556 Junior Ranch Trail (<i>Open/Limited Open</i>) *	150	150	45	20
✓O562 Green Ranch Trail (<i>Open/Limited Open</i>) * (New)	150	150	45	20
✓N670 Non-Pro Ranch Trail *	150		45	20
N677 Non-Pro Walk/Trot Ranch Trail	150		45	
RE-SET ARENA				
O552 Open Ranch Horse Conformation (<i>Open/Limited Open</i>)	150	150		
RE-SET ARENA				
N440 Non-Pro Breakaway Roping	150		45	
O181 Junior Judged Tie-Down Roping (<i>Open/Limited Open</i>)	150	150	45	
O182 Senior Judged Tie-Down Roping (<i>Open/Limited Open</i>)	150	150	45	
N600 Non-Pro Judged Tie-Down Roping	150		45	
O220 Timed Tie-Down Roping – ELIMINATIONS (<i>Open/Limited Open</i>)	150	150	45	
N410 Non-Pro Timed Tie-Down Roping – ELIMINATIONS	150		45	
O220 Timed Tie-Down Roping (<i>Open/Limited Open</i>)			FINALS	
N410 Non-Pro Timed Tie-Down Roping			FINALS	

7:30 AM

WILL ROGERS COLISEUM

✓O016 Hunter in Hand, Two & Three Year Old Mares (<i>Open/Limited Open</i>)	150	150		20
✓O018 Hunter in Hand, Two & Three Year Old Geldings (<i>Open/Limited Open</i>)	150	150		20
✓N532 Non-Pro Yearling Longe Line, Hunter	150			20
O280 Camas Prairie Stump Race – ELIMINATIONS (<i>Open/Limited Open</i>)	150	150		
N289 Non-Pro Novice Camas Prairie Stump Race – ELIMINATIONS	115			
O280 Camas Prairie Stump Race (<i>Open/Limited Open</i>)			FINALS	
N289 Non-Pro Novice Camas Prairie Stump Race			FINALS	
O280 Camas Prairie Stump Race (<i>Limited Open</i>) – <i>If needed</i>			FINALS	
N125 35 & Over Non-Pro Hunter Under Saddle	150			
✓O365 Green Western Riding (<i>Open/Limited Open</i>)	150	150		20
N115 35 & Over Non-Pro Hunt Seat Equitation	115			

Wednesday, November 1

7:30 AM

	Pre Entry	Limited Pre-Entry	Equip/ Cattle	Optional NSBA
JOHN JUSTIN ARENA				
O231 Junior Judged Heading (<i>Open/Limited Open</i>)	150	150	45	
O232 Senior Judged Heading (<i>Open/Limited Open</i>)	150	150	45	
N610 Non-Pro Judged Heading	150		45	
O236 Junior Judged Heeling (<i>Open/Limited Open</i>)	150	150	45	
O237 Senior Judged Heeling (<i>Open/Limited Open</i>)	150	150	45	
N620 Non-Pro Judged Heeling	150		45	
O240 Heading & Heeling – ELIMINATIONS (<i>Open/Limited Open</i>)	150	150	45	
N390 Non-Pro Heading & Heeling – ELIMINATIONS	150		45	
O240 Heading & Heeling (<i>Open/Limited Open</i>)			FINALS	

2023 World Championship Appaloosa Show

Tentative Class Schedule cont.

N390	Non-Pro Heading & Heeling		FINALS	
O250	Steer Daubing (<i>Open/Limited Open</i>)	150	150	45
N420	Non-Pro Steer Daubing	150		45
AWARD Champion & Reserve Champion Cattle Horse				
AWARD Champion Non-Pro Cattle Horse				
AWARD Champion & Reserve Champion Ranch Horse				
RE-SET ARENA				
✓O427	Three-Year-Old Snaffle Bit Western Pleasure (<i>Open/Limited Open</i>)	150	150	20
P43	ApPHA APPsolute Stakes Three-Year-Old Western Pleasure	Concurrent w/O427		
✓O361	Junior Western Riding (<i>Open/Limited Open</i>)	150	150	20
✓N338	Masters Non-Pro Western Pleasure	150		
✓O444	Three-Year-Old Snaffle Bit Hunter Under Saddle (<i>Open/Limited Open</i>)	150	150	20
P33	ApPHA APPsolute Stakes Three-Year-Old Hunter Under Saddle	Concurrent w/ O444		
N328	Masters Non-Pro Western Horsemanship	115		
AWARD Champion & Reserve Champion English Horse				
N370	Non-Pro Reining	150		
AWARD Champion Non-Pro Western Exhibitor				
✓O425	Green Western Pleasure (<i>Limited Open</i>) - <i>If needed</i>			See Thursday, 11/2

7:30 AM

WILL ROGERS COLISEUM

N317	Non-Pro Walk/Trot Showmanship	115		
N518	Non-Pro Performance Halter Mares	150		
N528	Non-Pro Performance Halter Geldings	150		
N508	Non-Pro Performance Halter Stallions	150		
N319	Novice Non-Pro Showmanship	115		
N315	35 & Over Non-Pro Showmanship	115		
N337	Non-Pro Walk/Trot Western Pleasure	150		
✓N531	Non-Pro Yearling Longe Line, Western	150		20
N287	Non-Pro Walk/Trot Camas Prairie Stump Race	150		
N281	Non-Pro Camas Prairie Stump Race - ELIMINATIONS	150		
N281	Non-Pro Camas Prairie Stump Race		FINALS	
AWARD Champion Non-Pro Games Horse				

RE-SET ARENA

R015	ApRHA Three-Year-Old Ranch Riding Futurity
R008	ApRHA Non-Pro Ranch Riding Derby
R016	ApRHA Four-Year-Old Open Ranch Riding Derby

Thursday, November 2

Proudly sponsored by ApHC Stallion Whataya Want From Me

7:30 AM

JOHN JUSTIN ARENA

		Pre Entry	Limited Pre-Entry	Equip/ Cattle	Optional NSBA
O035	Performance Halter Stallions (<i>Open/Limited Open</i>)	150	150		
O030	Weanling Colts (<i>Open/Limited Open</i>)	150	150		
O031	Yearling Colts (<i>Open/Limited Open</i>)	150	150		

2023 World Championship Appaloosa Show

Tentative Class Schedule cont.

O032	Two-Year-Old Stallions (<i>Open/Limited Open</i>)	150	150	
O033	Three-Year-Old Stallions (<i>Open/Limited Open</i>)	150	150	
O034	Aged Stallions (<i>Open/Limited Open</i>)	150	150	
O094	Foundation Pedigree Designation Halter, Stallions	150		
R004	ApRHA Open Derby			
N360	Non-Pro Bareback Horsemanship	115		
✓N128	Masters Non-Pro Hunter Under Saddle	150		20
R005	ApRHA Non-Pro Reining Derby			
✓N129	Novice Non-Pro Hunter Under Saddle	115		20
✓N660	Non-Pro Ranch Rail Pleasure *	150		20
R001	ApRHA Reining Futurity			
✓O445	Two-Year-Old Snaffle Bit Hunter Under Saddle (<i>Open/Limited Open</i>)	150	150	20
P032	APPSolute Stakes Two-Year-Old Hunter Under Saddle	<i>concurrent w/ O445</i>		
	AWARD Champion Non-Pro Showmanship/Equitation Exhibitor			
	AWARD Champion Non-Pro Halter Exhibitor			
N118	Masters Non-Pro Hunt Seat Equitation	115		
✓N660	Non-Pro Ranch Rail Pleasure *	FINALS		
	AWARD High-Point & Reserve High-Point Masters Non-Pro			
N119	Novice Non-Pro Hunt Seat Equitation	115		
✓O425	Green Western Pleasure (<i>Open/Limited Open</i>)	150	150	20
✓O563	Green Ranch Rail Pleasure (<i>Limited Open</i>) * – <i>If needed (New)</i>	See Friday, 11/3		

7:30 AM

WILL ROGERS COLISEUM

✓N560	Non-Pro Hunter in Hand Mares	150		20
✓N570	Non-Pro Hunter in Hand Geldings	150		20
✓N550	Non-Pro Hunter in Hand Stallions	150		20
✓O362	Senior Western Riding (<i>Open/Limited Open</i>)	150	150	20
G001	AGHA Camas Prairie Stump Race - ELIMINATIONS			
G001	AGHA Camas Prairie Stump Race - FINALS			
N327	Non-Pro Walk/Trot Western Horsemanship	115		
✓O432	Yearling Longeline, Hunter (<i>Open/Limited Open</i>)	150	150	20
P022	ApPHA APPSolute Sires SSA Yearling Longeline Hunter	<i>concurrent with O432</i>		
N687	Non-Pro Walk/Trot Ranch Riding	150		

Friday, November 3

7:30 AM

JOHN JUSTIN ARENA

		Pre Entry	Limited Pre-Entry	Equip/ Cattle	Optional NSBA
O078	Performance Halter Geldings (<i>Open/Limited Open</i>)	150	150		
O073	Weanling Geldings (<i>Open/Limited Open</i>)	150	150		
O074	Yearling Geldings (<i>Open/Limited Open</i>)	150	150		
O075	Two-Year-Old Geldings (<i>Open/Limited Open</i>)	150	150		
O076	Three-Year-Old Geldings (<i>Open/Limited Open</i>)	150	150		
O077	Aged Geldings (<i>Open/Limited Open</i>)	150	150		
O096	Foundation Pedigree Designation Halter, Geldings	150			

Protect Your Appaloosa,

Nose to Tail!



**FIND THE
PERFECT
FLY SHEET**

**In Less Than a Minute @
sstack.com/flysheet-finder**

SSTACK.COM
Schneiders®
Horses define who we are™

8255 E. Washington St. Chagrin Falls, OH 44023

Store Hours: Monday-Saturday 10am-6pm Sunday Noon -5pm | Curbside Pickup is Available M-F

FREE SHIPPING ON ORDERS OVER \$100

2023 World Championship Appaloosa Show

Tentative Class Schedule cont.

O086	Most Colorful at Halter (<i>Open/Limited Open</i>)	150	150	
N335	35 & Over Non-Pro Western Pleasure	150		
P037	ApPHA APPsolute Stakes NP/Youth 5 & Under Hunter Under Saddle			
N690	Non-Pro Ranch Reining *	150		
✓O426	Two-Year-Old Snaffle Bit Western Pleasure (<i>Open/Limited Open</i>)	150	150	20
P042	ApPHA APPsolute Stakes Two-Year-Old Western Pleasure	<i>concurrent with O426</i>		
N650	Non-Pro Ranch Horse Conformation	150		
✓W019	EWD Western Horsemanship, Independent W/J			
✓W020	EWD Western Horsemanship, Independent W/J/L			
✓P047	ApPHA APPsolute Stakes NP/Youth 5 & Under Western Pleasure			
✓W023	EWD Western Horsemanship, Veterans Independent W/J/L			
	Veterans Parade			
O600	Rope Race (<i>Open/Limited Open</i>)	150	150	
AWARD	AWARDS CEREMONY			
AWARD	Champion & Reserve Champion Western Horse			
AWARD	Non-Pro Sportsmanship Award			
AWARD	All-Around Non-Pro			
AWARD	World's Best & Reserve World's Best Appaloosa			
AWARD	High-Point & Reserve High-Point Non-Pro			
AWARD	Champion Non-Pro Ranch Horse			
AWARD	Champion & Reserve Champion Games Horse			
✓W022	EWD Western Pleasure, Independent W/J			
✓W021	EWD Western Horsemanship, Veterans Independent W/J			
✓O563	Green Ranch Rail Pleasure (<i>Open/Limited Open</i>) (New)	150	150	20

4:00

VETERAN'S APPRECIATION SOCIAL

7:30 AM

WILL ROGERS COLISEUM

✓N680	Non-Pro Ranch Riding *	150		20
✓O561	Green Ranch Riding (<i>Open/Limited Open</i>) * (New)	150	150	20
✓O431	Yearling Longeline, Western (<i>Open/Limited Open</i>)	150	150	20
P023	ApPHA APPsolute Sires SSA Yearling Longeline Western	<i>Concurrent w/ O431</i>		
N667	Non-Pro Walk/Trot Ranch Rail Pleasure	150		
G002	AGHA Nez Perce Stake Race – ELIMINATIONS			
G002	AGHA Nez Perce Stake Race – FINALS			

Saturday, November 4

7:30 AM

JOHN JUSTIN ARENA

		Pre Entry	Limited Pre Entry	Equip/ Cattle	Optional NSBA
O059	Performance Halter Mares (<i>Open/Limited Open</i>)	150	150		
O053	Weanling Fillies (<i>Open/Limited Open</i>)	150	150		
O054	Yearling Fillies (<i>Open/Limited Open</i>)	150	150		
O055	Two-Year-Old Mares (<i>Open/Limited Open</i>)	150	150		
O056	Three-Year-Old Mares (<i>Open/Limited Open</i>)	150	150		

2023 World Championship Appaloosa Show

Tentative Class Schedule cont.

O057	Aged Mares (Open/Limited Open)	150	150	
O058	Broodmares (Open/Limited Open)	150	150	
O095	Foundation Pedigree Designation Halter, Mares	150		
✓O560	Green Ranch Reining (Open/Limited Open) (New)	150	150	
✓N339	Novice Non-Pro Western Pleasure	115		20
N127	Non-Pro Walk/Trot Hunter Under Saddle	150		
N325	35 & Over Non-Pro Western Horsemanship	115		
N117	Non-Pro Walk/Trot Hunt Seat Equitation	115		
N329	Novice Non-Pro Western Horsemanship	115		

AWARD High-Point & Reserve High-Point 35 & Over Non-Pro

AWARD High-Point & Reserve High-Point Novice Non-Pro

AWARD High-Point & Reserve High-Point Walk/Trot Non-Pro

AWARD Overall High-Point Exhibitor

AWARD World Show Leading Breeder

9:00 AM

W.R. Watt Arena

- ✓W001 EWD Trail, Independent W/J
- ✓W002 EWD Trail, Supported W/J
- ✓W003 EWD Trail, Independent Walk
- ✓W004 EWD Trail, Supported Walk
- ✓W005 EWD Trail, Independent W/J/L
- ✓W006 EWD Trail, Veterans W/J
- ✓W010 EWD Showmanship Level 1 (wheelchair)
- ✓W011 EWD Showmanship Level 2
- ✓W012 EWD Showmanship Level 3
- ✓W015 EWD Horsemanship/Equitation, Veterans Walk (Independent/Supported)
- ✓W016 EWD Western Horsemanship, Supported W/J
- ✓W017 EWD Horsemanship/Equitation Independent Walk
- ✓W018 EWD Horsemanship/Equitation, Supported Walk
- ✓W025 EWD English Equitation, Independent W/T

Thank You!



Saddle Sponsor

World's Best Appaloosa

Sponsored by Windemere Equestrian Center