

2022

WORLD

CHAMPIONSHIP APPALOOSA SHOW



October 26 - November 5
Fort Worth, Tx
WILL ROGERS
MEMORIAL CENTER



World Show Deadlines

ONLINE ENTRIES DEADLINE

10/07/22

HARD COPY ENTRIES & STALLS DEADLINE

10/05/22

RV RESERVATION DEADLINE

09/30/22

TWIN CITIES SOUTH TRAILERS



The Official Trailer and Dealer of
THE APPALOOSA HORSE CLUB



WE PROMISE YOU WILL SAVE BIG! WE NEED CLEAN TRADES!
Long term, low fixed-rate financing too!

Twin Cities South Trailers is
a long-time supporter of the
ApHC.



When it's time for your new
or used trailer, please see us
first. You'll be glad you did!

Gary and Tammy Raak
8448 HWY 377 ♦ Pilot Point, TX ♦ (855) 585-6548
TwinCitiesSouthTrailers.com

TABLE OF CONTENTS

ADMINISTRATIVE CHARGE	16	INHUMANE TREATMENT	24
AWARDS	32	INSPECTION STATION	20
BARN RULES	21	LAMENESS	24
BEDDING	28	MOST COLORFUL AT HALTER.....	40
CERTIFICATE OF REGISTRATION	18	NSBA DUAL-APPROVED CLASSES	12, 34
CHAMPION OF CHAMPIONS.....	42, 48	NON-QUALIFYING CLASSES.....	12
CHECK-IN PROCEDURES	16	OFFICIAL VETERINARIAN.....	22, 46
CONTACT INFORMATION	43	OWNERSHIP & MEMBERSHIP	12
COMMERCIAL EXHIBIT INFORMATION	30	Paddock PROCEDURE.....	24
CLASS PATTERNS	22	PARKING	30
CLASS PROCEDURES	22	PAYMENT PROCEDURES.....	16
DISQUALIFICATION.....	22	PHOTOGRAPHER	22, 35
DOGS/PETS.....	32	RECREATIONAL VEHICLES	26
DRUG TESTING.....	22	TRANSFER OF OWNERSHIP	14
EQUIPMENT JUDGE.....	24	VET/SCRATCHES/REFUNDS	20
ELIGIBILITY	12	SHOW SCHEDULE.....	47
ELIMINATION, FINALS AND SCORING	32	SHOW OFFICIALS.....	45
ENTRIES	14	SHOW OFFICE	16
ENTRY AGREEMENT	10	STALLION SERVICE AUCTION INCENTIVE CLASSES	42
EXHIBITOR NUMBERS	20	STALL INFORMATION.....	26
FARRIER.....	30	SUBSTITUTIONS	20
FEED	30	TEAM ROPING	40
FORFEITURE OF STALL LOCATION.....	28	VIDEOGRAPHER.....	37
FREESTYLE REINING	40, 44	WINDEMERE HUNTER CLASSIC.....	40
GENERAL RULES & REGULATIONS.....	10	WORKING ORDER	22
GOLF CARTS.....	13, 30	WORLD SALE	59
HEALTH INSPECTION	18	WRMC MAP	23
HERITAGE	40	YEARLING LONGE LINE	36
HOTELS.....	6		



ALL THE PRETTY HORSES



MONTANA[®]
SILVERSMITHS

BRAND OF CHAMPIONS[®]

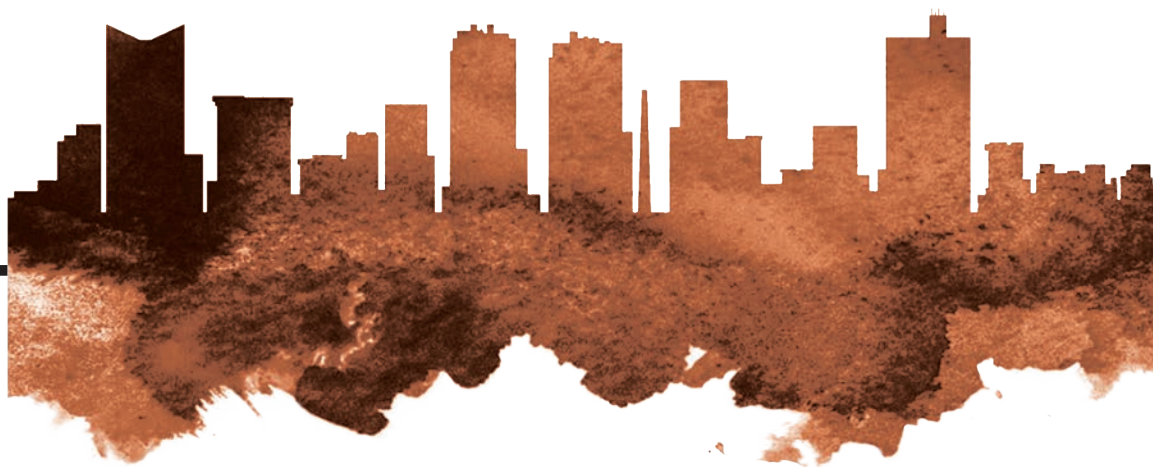
www.montanasilversmiths.com | Follow us [f](#) [i](#) [t](#) [p](#) [i](#) [n](#)



OFFICIAL SILVERSMITHS

Preferred Ft Worth Hotels

These hotels are waiting to serve participants and spectators!



SPRINGHILL SUITES MARRIOTT

3250 Lovell Avenue
(888) 287-9400

- Less than 5 minutes from Will Rogers Complex
- Complimentary "Grab & Go" breakfast
- Free high-speed internet access
- FREE Parking

\$126/NIGHT PLUS APPLICABLE TAXES

Reserve by 10/1/22

FORT WORTH FAIRFIELD INN & SUITES

1505 South University Drive
(817) 335-2000

- Less than five minutes from WRMC
- Within walking distance of more than 15 restaurants
- Grab and Go breakfast
- Guest Laundry
- Free internet, exercise room, indoor pool, Jacuzzi

\$109/NIGHT PLUS APPLICABLE TAXES

Reserve by 10/5/21

TOWNEPLACE SUITES FORT WORTH DOWNTOWN

805 BELKNAP ST.
(817) 332-6300

- 10 minutes from Will Rogers Complex
- Fully furnished kitchen
- Free Wi-Fi
- Complimentary breakfast BUFFET
- Outdoor heated pool
- Free Parking

\$99/NIGHT PLUS APPLICABLE TAXES (KING SUITE)

Reserve by 10/1/22

COURTYARD FORT WORTH UNIVERSITY DRIVE

3150 Riverfront Drive
(800) 321-2211 or (817) 335-1300

- Less than 5 minutes from Will Rogers Complex
- Complimentary "Grab & Go" breakfast
- Pool
- Free high-speed internet access
- FREE Parking

\$123/NIGHT PLUS APPLICABLE TAXES

Reserve by 10/1/22

RESIDENCE INN FW CULTURAL DISTRICT

2500 Museum Way
(817) 885-8250

- 5 minutes from Will Rogers Complex
- Free Parking & Wi-Fi
- Complimentary hot breakfast
- Fully furnished kitchen

\$139/NIGHT PLUS APPLICABLE TAXES

Reserve by 10/12/22

HOME2 SUITES BY HILTON

1145 University Drive
(682) 707-9475

- Across the Street from Will Rogers Memorial Center
- Complimentary "Grab & Go" breakfast
- Fully furnished kitchen
- Free parking & Wi-Fi
- Pet Friendly
- On-site laundry

\$129/NIGHT PLUS APPLICABLE TAXES (1 QUEEN STUDIO SUITE)

\$149/NIGHT PLUS APPLICABLE TAXES (2 QUEEN STUDIO SUITE)

Reserve by 10/5/22

NATIONAL GRAND CHAMPION MARE



Alexa

2018 Mare

National Champion Aged Mare
National Grand Champion Mare
Shown by Ted Turner, Jr

Mikimoto

2020 Mare

National Champion Non-Pro 2 Year-Old Mare
National Grand Champion Non-Pro Mare
Shown by David Beck

National Champion 2 Year-Old Mare
National Reserve Grand Champion Mare
Shown by Ted Turner, Jr



NATIONAL GRAND CHAMPION NON-PRO MARE NATIONAL RESERVE GRAND CHAMPION MARE



Visit our Beck Farms Facebook page
for more information
Ranch & Breeding Managers:
Brett & Rachelle "Ralphie" Larsen
Assistant Ranch Manager:
Tina Garges

Gail Bates Advertising www.gailbates.com



Beck Farms
2978 West Armstrong Road
Lodi, California 95242
209-479-0734

Personal Safety & Security Reminders



The ApHC wants to remind everyone to have a safe and enjoyable show.

Many of you will be traveling long distances through unfamiliar places, and it pays to think ahead. The following are things that you may already know, but now is a great time to read over them again and discuss safety with your family. It is also a great time to check the security measures you use to protect your belongings. Do what you can now to make yourself and your family an unattractive target to thieves and criminals.

Be aware of your surroundings. If something doesn't look or feel right, trust your instincts.

Park and walk only in well-lit areas. Travel in pairs, especially at night.

Children should be with a responsible adult at all times.

Look for a hotel with 24-hour on-site security.

Don't carry large amounts of cash. Think about replaceable travelers' checks or debit cards with fraud protection instead. Keep a list of credit card and bank contact numbers in a separate place that you can use to cancel cards or accounts if necessary. Have a back up plan in case your purse or wallet is stolen.

Purses, wallets, GPS devices, briefcases, bags, laptop computers or anything that looks valuable should never be left in a vehicle or unattended area.

Spare wheels, tires and even whole trailers can be targeted by thieves. Locking the hitch on your trailer and the spare on your truck will make you a less attractive target.

Lock your tack stall. Even if you're only going around the corner or into another stall, always lock up.

**Label your cell phone, camera, cases, tack carriers, etc.
Found items are returned more quickly if the owner can be easily identified.**

If you can, leave your dogs at home. If you bring a dog, keep them on a leash or penned up. Please make sure they are wearing tags with a local or cell number where you can be reached.

Put a label on your horse's stall with your cell, hotel, and local contact information so that you can be reached in the case of a horse emergency.

If you see a horse in distress and the owner is not around, contact the show office or the stall office. The Stall Office is open 24 hours a day.



sstack.com

SCHNEIDERS
Value Priced Horse Supplies Since 1948

OVER **1000 NEW** PRODUCTS JUST ADDED @ **SSTACK.COM**
FREE SHIPPING ON ORDERS OVER \$100



KELLY HERD
FINE JEWELRY SINCE 1983

The Best Of Fall

Elevate your fall wardrobe with
Kelly Herd's top rated rings,
earrings, and necklaces.

KELLYHERDJEWELRY.COM



GENERAL RULES & REGULATIONS

The World Show will be run in compliance with the 2022 Official Handbook of the Appaloosa Horse Club, except as otherwise stated in the following pages.

The management reserves the right to decline any entry before or during the show without liability for compensation for reasons such as non-sufficient fund checks, stopped payment on checks, poor sportsmanship, inhumane treatment of horses, or harassment of judges, officials, secretaries, ring stewards and/or any other employee of the show.

The show management reserves the right to change the show schedule at any time.

All horses entered in the show must be registered with the ApHC, be eligible to compete and must purchase a stall.

All horses not officially entered in the show and assisting in, but not limited to, cutting or team roping must be registered with the ApHC and must purchase a stall. These horses must also be issued a back number and pass through the inspection station in order to assist in the show. Exhibitors will be disqualified for using a horse to assist in any class that is not registered with the ApHC.

All horses on the show grounds must purchase a stall and must show current health papers and proof of negative Coggins in the show office. See HEALTH INSPECTION for additional details.

All entrants must provide information on lodging accommodations in Fort Worth in order to pick up the exhibitor packet for each horse. Please see SHOW OFFICE for more details.

ENTRY AGREEMENT

Release, Assumption of Risk, Waiver and Indemnification

This statement waives important legal rights. Read it carefully before signing any entry forms and/or before participating in any class as an owner and any of his/her representatives, authorized agent, trainer, lessee, rider, driver and/or handler.

I AGREE in consideration for my participation in the World Championship Appaloosa Show ("Competition") to the following:

I AGREE that I choose to participate voluntarily in the Competition with my horse(s), as a rider, driver, handler, lessee, owner, agent, coach, trainer, or as parent or guardian of a youth exhibitor. I am fully aware and acknowledge that horse sports and the Competition involve inherent dangerous risks of accident, loss, and serious bodily injury including broken bones, head injuries, trauma, pain, suffering, or death ("Harm").

I AGREE to release the Appaloosa Horse Club, ("ApHC"), the Competition, officials, officers, directors, employees, specialty associations, independent contractors, agents, personnel, volunteers, the Will Rogers Memorial Center, the Fort Worth Convention & Visitors Bureau, the City of Fort Worth, EMTs, trade show vendors, sponsors and/or other sponsoring organizations if any, (collectively the "Released Parties"), from all claims for money damages or otherwise for any Harm to me, my horse(s) and/or my property and for any Harm caused by me, my horse(s) and/or my property to others, even if the Harm resulted, directly or indirectly, from the negligence of the Appaloosa Horse Club, any of the Released Parties and/or the Competition.

I AGREE to assume all liability and responsibility for any accidents, injury or damages sustained or caused by myself, my helpers, my stock or my equipment and I AGREE to expressly assume all risks of Harm to me or my horse(s), including Harm resulting from the negligence of the ApHC, the Released Parties

or the Competition.

I AGREE to indemnify (that is, to pay any losses, damages, or costs incurred by) the ApHC, the Released Parties and the Competition and to hold them harmless with respect to claims for Harm to me or my horse(s), and for the claims, demands, cause of accident, cost of charges and expenses of every kind and nature which may be incurred by reason of any accident, injury, or damage to person or property caused by ownerships, exhibition, or custody or control of any animal exhibited, made by others for any Harm caused by me, my horse(s) and/or my property at the Competition.

I have read the Appaloosa Horse Club rules about protective equipment, including protective headgear, and I understand that I am entitled to wear protective equipment without penalty, and I acknowledge that the Appaloosa Horse Club, strongly encourages me to do so while WARNING that no protective equipment can guard against all injuries. I further understand that any minor child entered in the Competition is required to wear protective headgear during games classes.

I AGREE that participation includes possible exposure to illness from infectious diseases including but not limited to COVID-19. While particular rules and personal discipline may reduce this risk, the risk of serious illness and death does exist. I knowingly and freely assume all such risks related to illness and infectious diseases, such as COVID-19, even if arising from the negligence or fault of the ApHC, the Released Parties and/or the Competition; and I hereby knowingly assume the risk of injury, harm and loss associated with the Competition, including any injury, harm and loss caused by the negligence, fault or conduct of any kind on the part of the ApHC, the Released Parties and/or the Competition.

I AGREE to hereby release and forever discharge the ApHC, the Released Parties and/or the Competition from any claim whatsoever which arises or may hereafter arise on account of any first aid, treatment, or service rendered in connection with my participation in the Competition.

I AGREE to furnish all health documents required by the Competition for each horse entered, upon request of the show management and understand that any horse that develops a contagious disease during the show will be immediately quarantined and/or removed from the grounds under the instructions of the Show Veterinarian or State Veterinarian.

I AGREE that the ApHC has the sole right to control, sell, rent, supervise or give away (or to assign others the right to do so) the exclusive rights to photograph, broadcast, televise, reproduce, transmit and disseminate all or part of this event. I authorize the ApHC to make use of any photographs, films or video taken of the horses and exhibitors entered, while on the grounds or in transit between the stabling facility and the event site, in any way they see fit in the promotion of the Competition or the ApHC. No such advertising or promotional rights shall include the right to use a participant's name or likeness in a manner that implies endorsement of any company, product category or service.

If I am a parent or guardian of a youth exhibitor, I consent to the child's participation and AGREE to all of the above provisions and AGREE to assume all of the obligations of this Release on the child's behalf.

I AGREE that the "ApHC" and "Competition" as used above includes all of the officials, officers, directors, employees, agents, personnel, volunteers and affiliated organizations.

I represent that I have the requisite training, coaching and abilities to safely compete in this competition.

2022 World Championship Show

11th ANNUAL

Windemere
HUNTER CLASSIC

Win **Cash & Prizes**

Proudly
Sponsored
by

Windemere

Equestrian Center

Jacksonville, Florida

For information on how
you can be an entry,
please call
Teresa Pennington
at 904.710.5807

See Premium Book for class rules and regulations

By signing the entry blank, I AGREE to be bound by all applicable Appaloosa Horse Club rules and all terms and provisions of the ENTRY AGREEMENT. In the event of failure to sign an entry form, the first entry in a class will be deemed acceptance of said rules.

ELIGIBILITY

A horse will be eligible to compete in each open class in which it has earned the minimum number of points prescribed for that class in the 2022 Official Handbook of the ApHC, if it has been nominated to participate in that class in accordance with the regional club qualifying system, if it was a 2021 World Show champion in that class, and/or if it was a 2022 National Show champion in that class.

Non-pros will be eligible to compete in each non-pro class, except those listed under "Non-Qualifying Classes", if they have earned the minimum number of points prescribed for that class in the 2022 Official Handbook of the ApHC, if they have been nominated to participate in that class in accordance with the regional club qualifying system, if the non-pro was a 2021 World Show champion in that class, and/or if the non-pro was a 2022 National Show champion in that class.

Complete rules regarding World Show qualifying in open and non-pro classes are contained in the Official Handbook of the ApHC.

All points considered for eligibility in this show must have been earned between September 1, 2021 and September 11, 2022 at ApHC-approved shows and only official ApHC records will be used as the basis for determining eligibility.

ApHC national points will not be earned by participation in the World Championship Show.

NON-QUALIFYING CLASSES

Weanling halter classes, ladies' and men's western pleasure, two-year-old western pleasure, two-year-old hunter under saddle, freestyle reining, ranch reining, ranch conformation **, yearling in-hand trail, open green classes (trail, western riding, western pleasure, hunter under saddle), yearling hunter in hand (fillies, geldings, and colts), yearling longeline (western and hunter), foundation pedigree designation halter (mares, stallions, geldings), weanlings and yearlings shown in non-pro hunter in hand classes (mares, stallions, geldings), non-pro yearling longeline (western and hunter), non-pro walk/trot classes, non-pro ranch classes (riding, trail, rail pleasure, reining, conformation **), non-pro novice games classes, non-pro boxing, non-pro bareback horsemanship, non-pro novice cutting, non-pro performance halter* (mares, stallions, geldings), non-pro yearling in-hand trail, do not require qualification.

*Horses shown in non-pro performance halter must have a racing ROM or a ROM in an open, non-pro or youth performance class.

**Horses are eligible to show in open ranch conformation if they have shown in at least one ranch class at the World Show. Horses are eligible to show in non-pro ranch conformation if they have shown in at least one non-pro ranch class at the World Show.

In addition, the ApHC board of directors passed a motion on 9/7/22 that states "After the qualifying process is complete and all regional nominations are submitted, if there are 6 or fewer qualified, that class will become non-qualifying for 2022 only." Per this motion, the following classes are non-qualifying classes for the

2022 World Show: non-pro saddle seat equitation, non-pro cutting, non-pro pleasure driving, performance halter stallions, green working hunter, working hunter, broodmares, pleasure driving, junior cutting, senior cutting, junior hunter hack, junior judged tie-down roping, three-year-old stallions, junior working cow horse, hackamore/snaffle bit reining, and junior western riding.

OWNERSHIP & MEMBERSHIP

Any horse exhibited at the show must be registered in the owner's name at the time of showing and must be entered as such.

All owners and exhibitors of horses being exhibited in open and non-pro classes at the show must be current members in good standing with the ApHC. If purchase of an ApHC membership is necessary, membership fees MUST accompany the entries or memberships can be purchased online at www.appaloosa.com. An ApHC membership application is available at www.appaloosa.com. Youth may obtain a youth membership to fulfill the ApHC membership requirement. Exhibitors and owners must also be members of an ApHC regional club and may be required to show proof of such membership.

All owners and exhibitors of horses being exhibited in open and non-pro classes at the show must also be a current-year member of an ApHC-affiliated regional club.

In order to compete in non-pro classes, the non-pro or member of their immediate family (per rule 900J) must own or co-own the horse as evidenced by ApHC records prior to the first day of the show. Therefore, all transfers must be completed by the close of



NSBA

You must have your NSBA membership number in order to enter NSBA dual-approved

Dual-Approved Classes

Many classes at the
74th National/Youth World Championship Show
are dual approved by NSBA.

Trophies for first place are awarded to the top entrant that is dual-entered in the NSBA portion of the class. Exhibitors must be current NSBA members to compete in the NSBA portion of these classes.

NSBA
New Rule for 2022
Starting January 1, 2022,
all horses competing in any NSBA class
(including dual-approved classes)
will be required to be registered with NSBA
in the current owner's name.

Call (847) 623-6722
to purchase an NSBA membership
or go to
www.nsba.com/membership
to purchase one online



Proud Sponsor of:
Appaloosa Horse Club



**THE PROTECTION YOUR
HORSE NEEDS.**



Appaloosa
Members Receive:
**15% OFF
ORDERS**

Now Through 12/31/2022
Enter Code: **APHC152022**



www.KensingtonProducts.com



Golf Car Rentals Available



Call 682.478.8153 or 817.921.5491 x101 or email johnny@metrogolfcars.com

Pre-Order ahead of time for discounted rates!

***Special offer expires on the day horses can move in.**

To Reserve:



www.metrogolfcars.com

business on October 27, 2022. The competing non-pro must be a current ApHC member, enrolled in the non-pro program and must meet all eligibility requirements as stipulated in the Official Handbook of the ApHC. **Unrelated non-pros may not show the same horse in non-pro division classes at the World or National Championship Appaloosa Shows.**

NOTE: The original Certificate of Registration must be presented in the show office at the show to obtain your back numbers.

ENTRIES

Entries must be submitted electronically via the ApHC on-line entry program or in writing. If submitted in writing, entries must be made on printed entry forms furnished by the ApHC (copies of printed forms accepted), signed by the proper parties and accompanied by all entry fees, equipment charges, cattle charges and a completed W-9 form for the first listed owner on the Certificate of Registration. Entries will not be accepted by telephone.

Exhibitors are responsible for any errors on their entry forms. Entries lacking sufficient information or not accompanied by all required fees will not be accepted.

Changes to entries must be submitted in writing. Changes to entries will not be accepted by telephone. The ApHC is not responsible for lost or late entries or for entries faxed or emailed. The ApHC recommends using the online entry system or certified/registered mail as these options provide immediate confirmation that your entries were received. Exhibitors are responsible for ensuring that faxed entries are received by the ApHC.

The IRS requires the ApHC to obtain the correct taxpayer identification number (TIN) for persons for whom we have to file an information return (i.e. 1099 Miscellaneous for premium payback). This form must be completed by the owner or in the case of multiple owners, by the first listed current owner. If the correct TIN is not provided, subsequent payments can be subject to backup withholding per IRS regulations. **Premium checks and/or award checks will not be issued until the ApHC has a W-9 on file for all persons receiving these checks.** You are required to complete a W-9 with the appropriate certifications and submit it with your entry. This information must be provided to the ApHC regardless of the age of the owner. Your exhibitor packet will be held if this form is not submitted with your entry. A W-9 form is available on the ApHC web site.

The social security number listed on the W-9 should be that of the owner, or in the case of multiple owners, that of the first listed current owner on the Certificate of Registration. No other social security number is acceptable. International residents must complete IRS Form #W-8ECI or the ApHC must deduct 30% of any monies earned.

Social security numbers must be provided for individuals. Taxpayer identification numbers will not be accepted in lieu of a social security number for individual owners. This information must be provided to the ApHC regardless of the age of the owner.

Entries sent by Federal Express, UPS, certified mail, return receipt or Express mail should be mailed to:
Appaloosa Horse Club World Show
2720 W Pullman Road
Moscow, Idaho 83843
Entries may be faxed to (208) 882-8150.
Entries may be emailed to showsecretary@appaloosa.com.

Exhibitors are responsible for verifying that their entries have been received in the ApHC office. **If you fax entries or stall reservations, DO NOT send originals in the mail as this will likely result in duplicate charges if paying by credit card.** If you fax entries or

stall reservations, please allow four (4) hours of processing time before calling the ApHC to determine if your entries and/or stall reservations have been received. Faxed copies of checks are not considered payment and entries and/or stall reservations will not be accepted until actual payment is received. Appaloosa Horse Club switchboard hours are Monday through Friday, 8 a.m. – 4 p.m. PT.

Declined credit cards may result in you paying post-entry prices.

If you are using a debit or credit card, please pre-authorize amounts over \$200 (or amounts in excess of your daily limit) with the card company or your bank to avoid processing delays and late fees.

PRE-ENTRY DEADLINE

October 5 (entries submitted in writing using official entry forms must be received in the ApHC office by this date)

October 7 (entries submitted using the online entry system must be entered and paid for online by 11:59 p.m. PT)

All entries must be in the ApHC office by the appropriate pre-entry deadline listed above in order to receive pre-entry prices and to be included in the Official Program. No supplement will be printed.

Entries will be accepted after this date/time with a post-entry fee of \$40/class. **NO EXCEPTIONS WILL BE MADE.** Post-entry fees are not assessed for NSBA entries, equipment charges or cattle fees in working cow horse, boxing or roping. Post entry fees **WILL BE** assessed to cattle fees in cutting classes and post entries in cutting will not work fresh cattle. Post entries must be made by 6:00 p.m. the day prior to when the class to be entered

DON'T MISS OUT ON THE WEB CAST!

If you can't make it to the show,
watch the webcast at
www.appaloosa.com/national-show

Place an ad on the webcast to advertise
your business, farm, stallion,
training services, or just to wish good luck
to a special exhibitor.

Click here to schedule your ad:
www.appaloosa.com/purchasewebcamad

ELITE

THE OFFICIAL SADDLE OF
THE APPALOOSA HORSE CLUB

2022
WORLD
CHAMPIONSHIP APPALOOSA SHOW



is scheduled.

Entries not processed using the on-line entry system by October 7 or not received in the ApHC office by October 5 must be taken to the show, not mailed to the ApHC.

The World Show program will list all entries that were received by the published pre-entry deadlines.

ADMINISTRATIVE CHARGE

There will be a \$50 one-time administrative charge, which includes drug-testing charges for each horse entered in the World Show. This fee is assessed only one time per horse regardless of the number of classes in which the horse is entered. For example, if a horse is entered in non-pro and open classes, only \$50 is due. For further clarification, see DRUG TESTING.

PAYMENT PROCEDURES

All entries must be made payable to the ApHC in U.S. funds drawn on a U.S. bank. Payment may be made in the form of personal checks, Visa, MasterCard, Discover, American Express or money order. A 3% surcharge will be added to all credit and debit card charges.

If you are paying by debit or credit card, you are advised to contact your bank or credit card issuer in advance about charges in excess of \$200 (or your bank card daily limit) to avoid the charge being declined for security reasons. Cards declined by the bank will be treated as insufficient funds and may result in your horse being excluded from the program and/or late stall penalties or post entry fees being assessed.

Any check returned to the ApHC office due to insufficient funds will require certified funds and payment of a returned check charge in order for entries to be processed. If the customer has not paid all charges for returned checks prior to the World Show, the agent/owner must bring certified funds to the show office for the entries to be processed.

The ApHC shall collect funds for entry and/or stall fees in which a credit card was declined or in which a check has been returned due to insufficient funds before processing entries or stall reservations.

The date at which funds are secured for declined credit cards or insufficient funds checks will be acknowledged as the date the entries and/or stalls are received and processed. Post-entry fees and late stall charges may be assessed to entries for which funds have been declined and which have not been cleared prior to the pre-entry deadline.

SHOW OFFICE

The show office is located adjacent to the John Justin Arena. The show office will be open October 27 from 8 a.m. to 5 p.m. Beginning the first day of the show, the show office will be open from 7 a.m. until the last ApHC class enters the arena for judging or until 9:00 p.m. (whichever is earlier) and will not close before 6:00 p.m. These are the only times that exhibitor packets can be picked up, class additions or scratches can be made or horse or exhibitor changes can be processed.

Post entries must be made by 6 p.m. the day prior to when the class is scheduled to be held – NO EXCEPTIONS.

The show office will NOT cash any checks. Third party checks will not be accepted.

See SUBSTITUTIONS and SCRATCHES/REFUNDS for further

information.

CHECK-IN PROCEDURES

PLEASE BE RESPONSIBLE EQUINE INDUSTRY STEWARDS AND ADHERE TO THESE GUIDELINES FOR THE SAFETY AND WELL-BEING OF ALL THOSE IN ATTENDANCE AT THE SHOW.

Please refer to the following check-list to help you get your horse checked in, safely stalled and ready to show.

1. Upon arrival, check in at the stall office (Moncrief building) – provide stall office personnel with the registered name of your horse(s) and the name of the person listed as “stalled with” on the stall reservation form you originally submitted. Stall personnel will give you a stall ledger listing your stall number(s) and give you directions to your stalls. If you purchase a stall at the show, it must be paid for at the time the request is made – stalls will not be unlocked until payment is made. Please keep your ledger as proof of purchase to present in the show office when picking up your exhibitor packet. If you have received a confirmation letter in which a horse is listed as “not stalled”, it will be necessary to purchase or confirm the purchase of a stall for the horse and provide the stall ledger to the show office when picking up your exhibitor packet.
2. Check into the show office (Richardson/Bass Building) – To pick up your exhibitor packet that includes the exhibitor numbers, you must present the following items at the show office:
 - a. Original Certificate of Registration (**PHOTOCOPIES WILL NOT BE ACCEPTED**), and
 - b. Current (within 30 days) health certificate dated on or after September 28, 2022 and

MOST COLORFUL AT HALTER

Given in Memory of Jim Wild

**Sponsored by Flying W Appaloosa
Ranch of Sarcoxie, MO**

1st place – \$500

2nd place – \$300

3rd place – \$150

4th – 10th place – \$100



Appaloosa
PRO COLLECTION



1-620-431-2479

tiogaterritory.com/ApHC

- c. Current (within 12 months) proof of negative Coggins signed by a licensed veterinarian dated on or after October 28, 2021.

Additionally –

- d. If your horse is listed as “not stalled” on your confirmation letter, you must present the stall ledger given to you upon check-in at the stall office when picking up your exhibitor number.
 - e. Completed proof of accommodations form if not previously submitted.
3. Check your horse through the Inspection Station (Burnett Building). Take your horse, your horse’s ORIGINAL Certificate of Registration and the horse’s exhibitor numbers to the inspection station. All horses entered in the show must be inspected against their original papers and have the inspector place a stamp on the exhibitor numbers for that horse prior to being allowed entry into any class. **“Help” horses used in cutting and roping must also pass through the inspection station with a properly issued back number and ORIGINAL Certificate of Registration.**

CERTIFICATE OF REGISTRATION

Original Certificates of Registration must be presented to the Show Office when picking up exhibitor packets for each horse and then to the Inspection Station prior to showing. **PHOTO-COPIES WILL NOT BE ACCEPTED!**

It is not the responsibility of the ApHC to provide original Certificates of Registration. You must pick up your exhibitor packet before going to the inspection station.

Horses (including “help” horses in cutting and roping) that have not been inspected by the Official Inspector will not be allowed

to show or assist in the class.

HEALTH INSPECTION

All horses (including weanlings and including “help” horses used in cutting and roping) must be accompanied by a current 30-day health certificate (dated on or after September 28, 2022) as well as a current, within 12 months, proof of negative Coggins (dated on or after October 28, 2021), and administered by a licensed accredited veterinarian showing positive identification of the horse, the horse’s temperature and the name and address of the laboratory performing the tests.

If Coggins and health papers are not available, the horse will not be allowed to unload on the grounds or shall be required to quarantine on grounds until these documents are received, will not be allowed to compete until documents are received, and fees will be forfeited.

Make sure the veterinarian uses registered names on Coggins and health certificates rather than “barn names.”

Exhibitor packets containing exhibitor numbers will not be released until all appropriate health documents have been received.

All horses are subject to inspection by the show veterinarian or State Veterinarian if suspected of harboring a communicable disease. All horses must be serviceably sound.

The attending show veterinarian recommends all horses be vaccinated for tetanus, influenza, rhinopneumonitis, EHV-1 and West Nile Virus.

EXHIBITOR NUMBERS

One exhibitor number will be assigned to each horse. This number will be used for all classes in which the horse is entered. If the



STATE LINE TACK®

We make riding affordable.

ENJOY **25% OFF**

Your next **StateLineTack.com** order with code **SLT2515**

Receive a **\$15 e-cert** with any order over \$79!

Scan here to view our latest deals!



State Line Tack® is proud to support the **Appaloosa Horse Club.**





Ad: ApHC National Show
Premium Book Ad 2021

Hodges Badge Company, Inc.

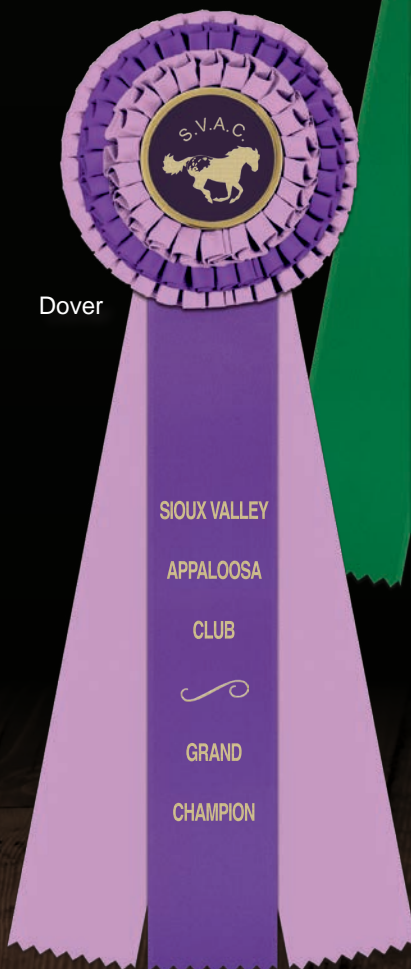
Visit Us Online for Our Entire Selection of Awards

Call today for your **FREE** Equestrian catalog and sample ribbon packet!

Official Ribbon Supplier for the ApHC



Wellfleet



Dover



Regent



Ideal

Find us on



horse is entered in more than one division (open & non-pro or ApHC & a specialty association class) one exhibitor number will be issued.

In addition to ApHC classes at the World Show, there are various specialty associations conducting classes. In cases in which the horse is already entered in ApHC classes at the World Show, the horse must be shown in specialty association class(es) using the exhibitor number issued by the ApHC. In cases in which the horse is not cross-entered in ApHC classes at the show, exhibitors must pay a one-time drug testing fee of \$50/horse and get their exhibitor numbers from the ApHC show office.

All exhibitor numbers for ApHC-registered horses MUST be stamped by the official World Show inspector, even if not entered in ApHC-sponsored classes. Please see INSPECTION STATION for complete instructions.

In order to receive a back number, all other show requirements must be fulfilled including presentation of the horse's original Certificate of Registration, proof of negative Coggins, health certificate and the horse must be stalled. In addition, the owner and exhibitor must be current ApHC members in good standing and must be members of an ApHC regional club.

Please see HEALTH INSPECTION for information pertaining to required health papers for all horses on the grounds, regardless of whether they are entered in ApHC World Show classes.

After picking up your exhibitor number, you must have your horse inspected. Please see INSPECTION STATION for complete instructions. To ensure that your placings are accurate, it is essential that the correct exhibitor number is used for all classes and displayed in the correct manner (see rule 711.M of the Official Handbook of the ApHC for complete rules for each class). Failure by exhibitor to display the correct number and in a visible manner while being judged shall result in disqualification from the class.

SUBSTITUTIONS

If substitution of a horse is necessary in a non-pro class or of an exhibitor in an open class, such changes must be made in writing prior to the class entering the arena or before judging has begun in the case of warm-up periods before a class starts. No exhibitor or horse changes will be accepted at the announcer's stand or paddock. **No exhibitor changes will be allowed in non-pro classes. No horse changes will be allowed in open classes.**

Any horse entering the arena in which the exhibitor is anyone other than the one on record with the ApHC show office and in which an exhibitor change has not been filed with the show office prior to the class entering the arena will be disqualified.

VET SCRATCHES/REFUNDS

Horses that become sick or injured PRIOR to the start of the show must submit a vet's statement concerning the condition of the horse, the horse's registration name and number and date the sickness or injury occurred. This documentation must be received in the ApHC Show Office PRIOR to that horse's first class for any refund to be considered. **As of the first day of the show, only statements from the Official Show Veterinarian, along with an official class scratch form, will be accepted for horses that become sick or injured on the show grounds.** All documentation must be in the Show Office PRIOR TO THE CLASS ENTERING THE ARENA. Forms/documentation received after the class has entered the arena will not result in any refunds of any kind.

If a horse does not compete in a class in which it is entered and a vet certificate and official scratch form has NOT been received in

advance of the class, the entry fees will be forfeited.

If a horse is disqualified from showing by management or officials or if a horse is entered and not shown, all fees will be forfeited.

Cattle and equipment charges are non-refundable after October 13, 2022. In cases where a horse is vet scratched (with a signed/dated statement from the attending veterinarian) at least 15 days prior to the first day of the show (by October 13), equipment and/or cattle fees will be refunded in full and stall fees will be refunded less a \$20/stall office fee.

The above-mentioned are the only instances in which refunds will be allowed. At the conclusion of the show and after the completion of a financial review, the class entry fee(s) will be refunded less a \$20 per class office charge.

Absolutely no refunds for administrative/drug testing fees, equipment fees (after 10/13), cattle fees (after 10/13), NSBA fees, ApHCF practice class fees, RV fees, Stallion Service Auction Incentive class fees, stall fees (after 10/13) or credit card surcharge fees will be given under any circumstances.

Refund checks, for all entries originally paid by check, will be mailed to exhibitors approximately 30-45 days following the last day of the show. For all entries paid by credit card, refunds will be credited to the original credit card approximately 30-45 days following the last day of the show. No refunds will be made on amounts of \$10 or less.

No refund allowance can be applied to charges while at the show. This is the only circumstance under which refunds will be issued.

INSPECTION STATION

All ApHC-registered horses must report to the inspection station PRIOR to showing in their respective classes, including if only showing in classes conducted at the show by a specialty association. All "help" horses in cutting and roping must also pass through the inspection station PRIOR to assisting in these classes.

The horse's original Certificate of Registration and exhibitor number must be presented to the Official Inspector prior to showing. **Horses will not be allowed entry into the arena for any class until that horse has passed through the inspection station and that horse's exhibitor number has been stamped by an Official Inspector.**

The inspection station will be open from 8 a.m. to 5 p.m. on October 27, and from 7 a.m. to 5 p.m. each day thereafter. If it is necessary for an inspection to be performed outside of these hours an inspector may be available; however, the exhibitor will be charged \$100 per horse payable at the time of the inspection. The ApHC suggests you pick up your exhibitor number (contained in your exhibitor packet) in the show office and have your horse inspected as soon as you arrive on the grounds to avoid long lines prior to your class.

The inspector may, at his sole discretion, refuse to allow a horse to participate if the registration of the horse appears invalid or otherwise improperly issued. If an Official Inspector refuses to permit a horse to participate, the owner has the right to appeal such refusal to the appeals committee of the ApHC Board of Directors (see Rule 273 of the Official Handbook of the Appaloosa Horse Club).

DRUG TESTING

All horses entered in the show, and/or on the grounds, are subject to drug testing. For complete rules and regulations concerning drug testing procedures, refer to rule 40 of the Official Handbook of the Appaloosa Horse Club. The owner, trainer or



FACILITY Information

PARKING

Please park vehicles and trailers in marked parking spaces only. Rip Johnson Drive is available for unloading only. Parking is not permitted on Rip Johnson Drive, Burnett/Tandy Drive or Tower Drive at any time. All other trailers must be parked in the trailer parking lot off of Trail Drive. No parking is permitted in any fire lanes. Vehicles blocking fire lanes will be towed at the owner's expense. See parking information on page 30.

SHAVINGS

Exhibitors and contestants are not permitted to bring shavings or other bedding onto the grounds. Will Rogers Memorial Center retains sole rights to shavings sales. Shavings are \$9.00-\$13.00/bag. Shavings are for sale at the WRMC shavings office in the Moncrief Building. Shavings can be purchased at the stall office if the shavings office is closed.

WASHING HORSES

All animals must be washed in designated wash areas. Horses may not be washed on sidewalks, aiseways or in stalls. The State of Texas prohibits wastewater from entering storm drains.

LOADING/UNLOADING AREAS

Unloading is permitted on Rip Johnson Drive and north of the Richardson-Bass Building. At no time is unloading permitted on Tower Drive west of the Burnett Building. Arriving horse trailers will receive a permit from the security station to unload. At the expiration of your designated time limit, trailers must be moved to the designated parking areas.

STALL DECORATIONS

Please limit end-of-aisle decorations to 42" deep and at least a 7' height clearance over aisles for equipment. WRMC asks that a covering, such as plastic, be placed underneath any ground cover or plants. Decorations must be attached using temporary setups, such as wire or plastic ties and removed prior to move-out. The following may NOT be used: Nails, Liquid Nail, Bolts, Screws, Rubber Cement, etc. Any fabric or paper used or draped on stalls must be fire-resistant or treated with fire retardant.

VEHICLES

Any vehicle, including golf carts and scooters, must be operated by a licensed driver. See page 30 for complete guidelines.

PETS

Fort Worth city ordinance provides that pets are allowed in stall areas only and must be secured by a leash or in a stall at all times. They are not permitted inside any building on the property. Please make arrangements in advance for pets to remain in stall areas, RV or other area. Owners assume all liability for pets. Tickets may be issued to participants not adhering to this policy.

RV PARKING

WRMC offers RV spaces in the lot off of Trail Drive with power, water and sewer hook

ups. Spaces are available by advanced reservation.

There are 104 additional RV spaces north of the Richardson/Bass building, that included a 50 or 30 amp service with sewer. Go to www.appaloosa.com and click on World Show to locate RV reservation form. For best rates, the forms are due by September 30.

"BLUE BOARDS"

WRMC invites exhibitors to post signs, flyers, etc. on the "Blue Boards" posted throughout the facility. Signs posted in other areas will be removed.

DUMPSTERS

Exhibitors are encouraged to take advantage of the large rolling dumpsters throughout the complex. They may be rolled into stall aisles or the parking lot for easier cleaning.

BARN PARTIES

Barn Parties must be pre-approved by WRMC and ApHC.

AISLEWAYS

Aisles may not be blocked with obstructions including, but not limited to, chairs, carts, roping dummies, stall decorations or golf carts.

GOLF CARTS

Please see page 30 for Will Rogers Memorial Center guidelines for golf cart use.

SMOKING

Smoking is not permitted in the barns or stall areas. Fort Worth City ordinance prohibits smoking in any of the Will Rogers Memorial Center buildings. Violators will be prosecuted.

SECURITY

Security will be on the grounds on a 24-hour basis. For your protection, you will be allowed limited access to those streets which run parallel the barn area of the Will Rogers Memorial Center. Despite precautions, no one is immune from crime, so please take the proper care when locking trucks, trailers, tack boxes and tack stalls.

STALL AREA

Refrigerated air units, microwaves and other appliances are prohibited in the stall area.

The Will Rogers Memorial Center is a Non-Smoking Facility

other responsible party must witness the blood or urine sample collection and sign the forms required by the veterinarian. Failure to do so waives any subsequent objections to the testing process or results. All awards will be issued pending drug test results. If a horse is tested positive for unapproved drugs or unacceptable levels of approved medication, all ribbons, trophies, and other awards must be held in escrow by the ApHC until notification of the disciplinary committee's decision.

Drug tests will be administered at the discretion of the ApHC. Those horses selected for testing must report to the drug testing station immediately following each class or random request. Once blood and urine samples have been collected, the horse may leave the testing stall. Drug testing procedures will be strictly enforced.

OFFICIAL PHOTOGRAPHER

The official and EXCLUSIVE photographer for the World Show is Becky Ruehle Photographix LLC. Photographers (including customers with cell phones) other than those authorized by Becky Ruehle Photographix are prohibited from entering the arena and/or staging photographs at the out-gate, shall not offer services on the grounds during the show whether for monetary compensation or not. Professional photography equipment and cameras with lenses larger than 3 inches and professional photographers capturing images for sale or for free distribution on social media or networking sites are prohibited without the expressed written permission from Becky Ruehle Photographix LLC.

OFFICIAL VETERINARIAN

In the event the ApHC designates a properly licensed veterinarian or veterinarians as the official veterinarian(s) or official drug testing veterinarian(s) for an ApHC-approved or sponsored event including, but not limited to, the National Show and World Show, as a service to exhibitors and other persons, and any exhibitor or other person directly or indirectly employs, retains, hires or otherwise utilizes the services, advice and/or expertise of such official show veterinarian(s) or official drug testing veterinarian(s), the ApHC shall not in any manner or to any extent whatsoever be liable or responsible for any action, conduct, decisions or services by such official show veterinarian(s) or official drug testing veterinarian(s). Such exhibitor or other person expressly releases and holds harmless the ApHC from any and all claims, liabilities, losses or actions of any kind arising from or in connection with the exhibitor or other person's employment, retention, hiring or utilization of the services, advice and/or expertise of such official show veterinarian(s) or official drug testing veterinarian(s).

The Official Show Veterinarian is Equine Sports Therapy of Whitesboro, TX. There may be veterinarians other than the ApHC Official Veterinarian on-site, however once the show starts vet scratches will not be accepted from anyone other than the ApHC Official Veterinarian.

Any animal on the grounds in immediate need of veterinarian care will be treated at the expense of the owner if the animal's owner(s) cannot be located.

CLASS PROCEDURES

The ApHC has established class procedures to benefit the majority of exhibitors participating, within the limits of available budget, manpower and time.

CLASS PATTERNS

Patterns will be available to download (at no charge) on the

ApHC website on October 15. Pattern books will be available in the show office and in the stall office at no charge. Patterns will be posted in the paddocks the day of the class.

DISQUALIFICATION

Any exhibitor, horse or owner disqualified from any class for any reason shall not receive a refund. When disqualification occurs by the show management or judges, the decision is final. In addition to other disqualifications as outlined in the rules and regulations contained in the Official Handbook of the ApHC, judges (including equipment judges) shall have the authority to disqualify entries for illegal equipment or attire, inhumane treatment, unsoundness/lameness or the presence of blood on the horse. See rule 30 of the Official Handbook of the ApHC for more information.

Exhibitors are not allowed to wear earpieces or to have wireless contact with anyone during the course of a class. Exhibitors in violation of this rule shall be disqualified.

In response to industry developments, the ApHC Board of Directors has agreed that the use of magnetic devices in clothing in showmanship, horsemanship, hunt seat equitation and saddle seat equitation constitutes an unfair advantage for exhibitors and shall not be allowed at ApHC-sponsored shows (Youth World, National Show, World Show). Magnetic devices must be removed prior to competition or the exhibitor shall be disqualified. This show management rule is effective immediately.

The use of belly bands is prohibited anywhere on the show grounds at ApHC-sponsored shows (Youth World, National Show, World Show).

WORKING ORDER

All working orders in elimination and final classes will be decided or drawn by show management in accordance with official ApHC rules. If you or your horse are entered in back-to-back or concurrent classes and feel that this will cause a time constraint, you must inform the show office by 5 p.m. the day prior to the classes and request a change in the order of go. **Adjustments shall only be requested for direct horse or exhibitor conflicts.** No adjustments will be made for trainer's convenience or non-show conflicts. Order of go adjustments are made to address direct horses/exhibitor conflict. If possible, show management will then adjust your working order. If you do not contact the show office prior to 5 p.m. the day before the class in question, we may not be able to accommodate your request. Once working orders or cuts have been posted, changes will not be made unless approved by show management.

PADDOCK PROCEDURE

Only exhibitors and their horses are allowed in the alleyway and holding area. This policy applies for the duration of the class, including eliminations and finals, etc. Once the horse has entered the paddock, only exhibitors entered in the class will be allowed to handle or ride their own horse. For safety reasons, exceptions may be made to this in over-fence classes when an exhibitor is showing more than one horse in a class. Exceptions must be approved by the paddock manager.

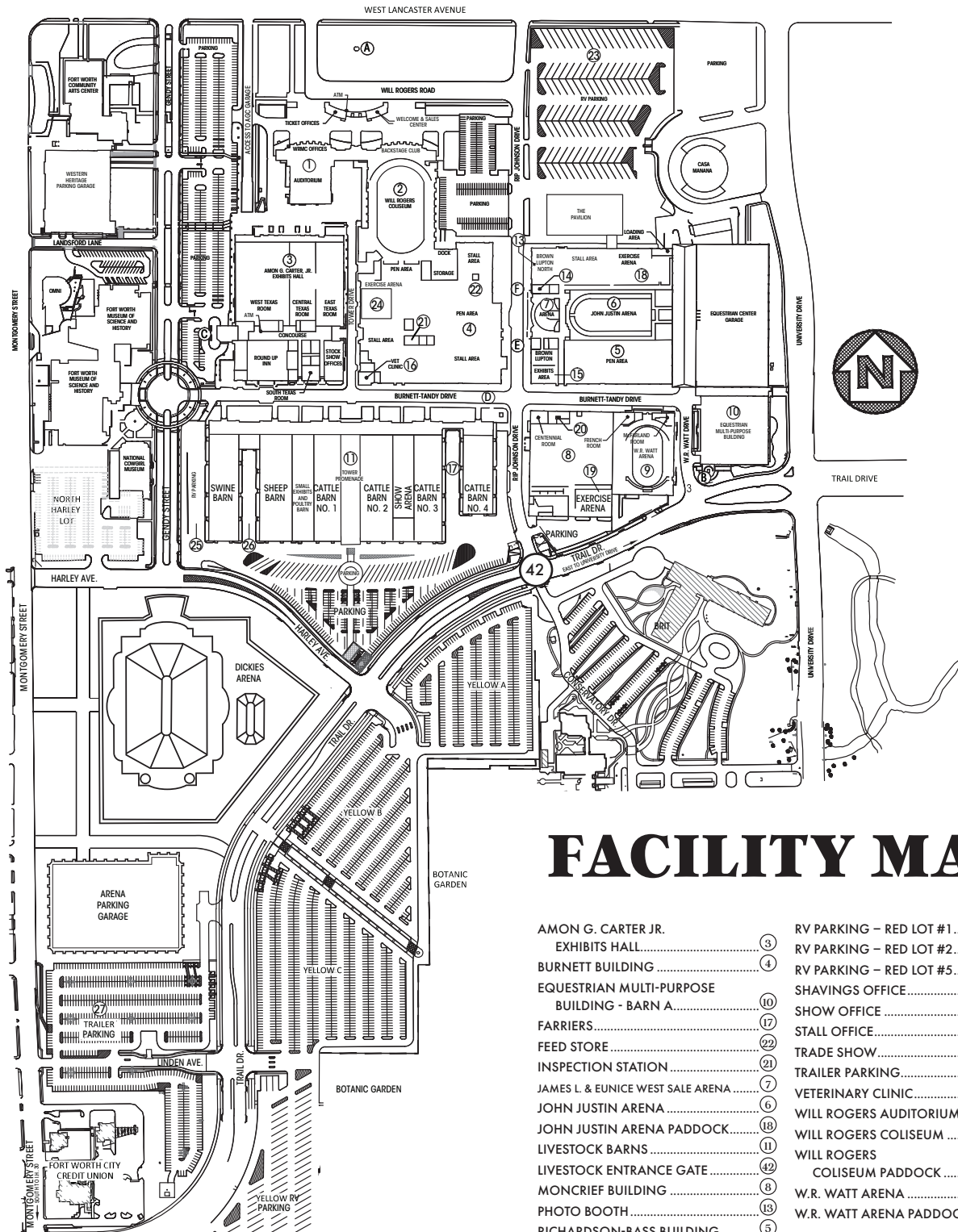
Grooming is prohibited in these areas including, but not limited to, any type of spraying.

Barn calls are a courtesy and will be made for each class and for all exhibitors entered in each class. Regardless of the circumstances, it is the exhibitor's ultimate responsibility to report to their class on time. Exhibitors must check in with the paddock announcer.

2022

WORLD

CHAMPIONSHIP APPALOOSA SHOW



FACILITY MAP

AMON G. CARTER JR. EXHIBITS HALL.....	3	RV PARKING - RED LOT #1.....	25
BURNETT BUILDING.....	4	RV PARKING - RED LOT #2.....	26
EQUESTRIAN MULTI-PURPOSE BUILDING - BARN A.....	10	RV PARKING - RED LOT #5.....	23
FARRIERS.....	17	SHAVINGS OFFICE.....	20
FEED STORE.....	22	SHOW OFFICE.....	14
INSPECTION STATION.....	21	STALL OFFICE.....	20
JAMES L. & EUNICE WEST SALE ARENA.....	7	TRADE SHOW.....	15
JOHN JUSTIN ARENA.....	6	TRAILER PARKING.....	27
JOHN JUSTIN ARENA PADDOCK.....	18	VETERINARY CLINIC.....	16
LIVESTOCK BARN.....	11	WILL ROGERS AUDITORIUM.....	1
LIVESTOCK ENTRANCE GATE.....	42	WILL ROGERS COLISEUM.....	2
MONCRIEF BUILDING.....	8	WILL ROGERS COLISEUM PADDOCK.....	24
PHOTO BOOTH.....	13	W.R. WATT ARENA.....	9
RICHARDSON-BASS BUILDING.....	5	W.R. WATT ARENA PADDOCK.....	19

Paddock personnel will call exhibitors to enter the arena in their posted order of go. All horses must be ready and waiting in the make-up arena so they may enter the main arena promptly when called.

In classes in which an order of go has been posted, entries not entering the arena for judging in their posted order of go have missed their class and will not be allowed to enter the arena to compete.

In classes in which a time limit has been given to enter the arena, entries not in the arena at the expiration of that time limit have missed their class and will not be allowed to enter the arena to compete.

Late entries will not be admitted into the arena once the gate has been closed.

Entrants are not permitted to enter the arena for judging unless the horse has been through the inspection station and the exhibitor numbers have been stamped by an official inspector. No refunds will be issued for missed classes.

EQUIPMENT JUDGE

An equipment judge(s) shall be employed by and be a representative of the ApHC. The equipment judge shall be responsible for attire and equipment rule interpretations. (Final interpretations are the responsibility of show management). All bits, tack, appointments and attire shall be checked by the equipment judge prior to the exhibitor entering the arena. Any equipment considered to be inhumane or illegal by the official equipment judge must be removed or entry into the arena will be denied. The equipment judge and/or judges in the arena may disqualify an entry for illegal equipment, improper attire, inhumane treatment, unsoundness/lameness or the presence of blood on the horse. See Rule 30 in the Official Handbook of the ApHC for complete rules regarding inhumane treatment.

The equipment judge(s) shall have the authority to call for a blood and/or urine test on any horse.

The equipment judge(s) may serve as an alternate show judge at the discretion of show management.

BLOOD DISQUALIFICATION

In all classes and all divisions of classes, judges and/or equipment judges may disqualify horse(s) from the class if fresh blood is found on the mouth and/or body areas of a horse (i.e. including but not limited to the barrel, flanks, belly, sides, shoulders). Judges and/or equipment judges have the sole authority to determine if the blood found on the horse warrants disqualification from the class and the judge's or judges' decision is final and not subject to protest.

LAMENESS

Rules regarding lameness are adopted to protect the health of Appaloosas exhibited in ApHC-approved and -sponsored shows. At show management's discretion, either at the beginning and/or upon completion of a class or individual work, prior to leaving the arena the horse shall be asked to perform movements/maneuvers on a loose rein or lead to demonstrate soundness. Exhibition in any class of a horse that is lame, as determined by show judges, shall be cause for disqualification. See rule 712 in the Official Handbook of the ApHC for complete rules regarding lameness. A judge's decision as to the lameness of a horse is final and not subject to protest.

INHUMANE TREATMENT

The ApHC is committed to the humane and proper treatment of all animals. The welfare of the horse is the primary consideration in all activities. Horses will be treated with kindness, respect and compassion at all times. Owners, exhibitors, trainers and all responsible parties must ensure the health and well-being of animals in their care at all times including, but not limited to, handling, transportation, training, treatment and stalling.

Per Rule 30.A.1 of the Official Handbook of the Appaloosa Horse Club, no person may treat a horse in an inhumane manner which includes but is not limited to:

- Placing an object in a horse's mouth so as to cause undue discomfort or distress.
- Tying a horse in a manner as to cause undue discomfort or distress including but not limited to in a stall, trailer or when longeing or riding.
- Letting blood from a horse.
- Use of inhumane training techniques, equipment or methods including but not limited to poling or striking horse's legs with objects (i.e. tack poles, jump poles, etc.)
- Attaching any item or appliance that restricts movement or circulation of the tail.
- Inhumane treatment that causes a horse to bleed.
- Any surgical procedure or injection of any foreign substance or drug which could affect the horse's performance or alter its natural conformation or appearance is prohibited, except for those surgical procedures performed for the sole purpose of protecting the health of the horse.
- Exhibiting a horse that appears to be sullen, dull, lethargic, emaciated, drawn or overly tired.
- If fresh blood is found on any mouth and/or body areas of a horse, (i.e.: including but not limited to: barrel, flanks, belly, sides, shoulders) the judge(s) must excuse the horse from the competition.
- Withholding food and/or water for prolonged periods of time such that it causes undue discomfort or distress to the horse.
- Excessive spurring or whipping;
- Excessive jerking of reins;
- Excessive fencing;
- Excessive or aggressive spinning;
- Use of prohibited equipment, including, but not limited to: saw tooth bits; hock hobbles; tack collars; or tack hackamores; riding in a curb bit without a curb strap; wire or solid metal curb straps no matter how padded; wire cavesson; wire or cable tie-downs (un-less wrapped or padded); bumper bits; metal bosals (no matter how padded); chambons; headstalls made of metal (no matter how wrapped or padded), twisted rawhide, or rope may not be used on a horse's head (3/8 inch rope may be used with a slip/gag bit); running martingales used with curb bits and/or used without rein stops;
- Applying excessive pressure on or excessively jerking a halter lead shank or an allowed lip chain

Become a Sponsor

2022

WORLD

CHAMPIONSHIP APPALOOSA SHOW

There are several ways
to show your support
and get your name in lights!

Trophy Saddle Sponsor: \$2,000

Day Sponsor: \$750

Buckle Sponsor: \$200

Class Sponsor: \$100

Let Your Farm Flag Wave: \$100



World Show Advertising



APPALOOSA

JOURNAL

Single regular page: \$600

2-4 regular pages: \$550 each

5 or more regular pages: \$500 each

Half Page: \$400

Premium Placement: \$150 extra per page

Reservation Deadline: September 10

For information contact:

advertising@appaloosa.com or (208) 882-5578 ext 256

Learn more at www.appaloosa.com/world-show

- Any other treatment or conduct deemed by a show official to be inhumane or abusive.
- Exhibiting a horse that has an open, raw or bleeding sore that repeatedly comes in contact with the hackamore.

The standard by which conduct or treatment will be measured is that which a reasonable person, informed and experienced in generally accepted equine training and exhibition procedures, would determine to be cruel, abusive or inhumane.

A Show Steward may be employed by and be a representative of the ApHC. He/she shall monitor the treatment of horses on the WRMC property. Upon discovery by a show official, show steward or barn monitor of inhumane treatment, show management may immediately disqualify the horse and exhibitor and report the matter to the ApHC for further disciplinary action.

STALL RESERVATIONS

Pre-Entry Deadline: Received in office (with complete payment) by October 5

You must complete the ApHC stall reservation form found online. Please complete only one form per trainer/ranch/group. You must have your stalling information in the ApHC office by the pre-entry deadline to receive preferred stabling and pre-entry deadline prices. Stall location and/or availability are not guaranteed.

Late fees shall be assessed to both regular and daily stalls if the reservations are received after October 5. Late fees are \$100 per stall or \$45 per stall per day for daily stalls.

Stall reservations not received in the ApHC office by October 9 should be taken to the show and submitted to the stall office upon arrival.

Horses other than those registered with the Appaloosa Horse Club may be stalled on the grounds. However, ApHC-registered horses have stalling priority. Non-Appaloosa horses may be stalled with Appaloosa horses depending upon space availability. Stalling of all horses, including those not registered with the ApHC, is at the sole discretion of show management.

Stalls for show horses will be located in the Burnett Building, Richardson-Bass Building, Moncrief Building and Barn 4. Barn 4 (Equestrian Multi-Purpose Building) is reserved for EWD entrants and sale horses only.

STALL FEES:

- \$275 (\$375 late) each – Burnett Building, Richardson-Bass Building, Moncrief Building,
- \$250 (\$350 late) each – Barn 4
- \$75 (\$120 late) per night - Daily Stalls are all located in Barn 4 or Barn 3.

No stall reservations will be accepted without full payment of all stall fees. See PAYMENT PROCEDURES for information on how to purchase your stalls.

Will Rogers Memorial Center will assess a charge of \$20/panel for any portable stall panel that is removed during the show. Exhibitors removing stall panels will be assessed these fees after the conclusion of the show and upon ApHC receipt of the WRMC invoice. **Exhibitors may choose to fold back the stall panels in portable stalls and zip-tie those BUT MUST RE-ASSEMBLE the stall at the conclusion of the show to avoid these charges.**

STALL RESERVATION FORM:

The stall reservation form must be completed and submitted with each horse's registered name and registration number. List all horses that will be occupying stalls. List all tack/feed stalls separately as "TACK/FEED". If your horse is in the process of being registered, include it on the stall card with the registration name and number as "REGISTRATION PENDING". Please indicate your first and second choices for stall locations (Refer to WRMC Facility Map online for building locations) and include aisle or end location and any other notes that may be helpful for personnel assigning your stall location. The number of stalls requested cannot exceed availability in that area.

If you are stalling with a trainer/ranch/group, send all stall requests AND PAYMENTS in the same envelope, choosing just one trainer/ranch/group name for the "stalled with" person. Include the total number of stalls on one card only. Stall requests not included in the same envelope or not faxed together are not guaranteed to be stalled together.

NOTE: The person listed as "stalled with" is responsible for all money due and will be held liable for all damages reported to stalls and is responsible for any payments due for damage or stall panels that are removed and not replaced by the exhibitor.

ApHC will attempt to stable each trainer/ranch/group according to choices requested on the stall reservation form. However, stabling decisions are made based upon the stabling history of the person listed as "stalled with" at this show and based upon the availability of stalls in the requested area(s).

If you request additional stalls upon arrival, or after the original request is received, those stalls must be paid for at the time of the request and may not be located with your other stalls. Stalls purchased after October 5 will be at late prices regardless of when you purchased your original stalls.

All reservations or changes to original reservations must be made in writing to the ApHC office. Reservations or changes to current reservations must be made in writing to the ApHC office. Reservations or changes to reservations will not be accepted over the phone.

STALL MOVE-IN/MOVE-OUT:

Stalls will be available for move in after 7:30 a.m. Wednesday, October 26. **Do not arrive prior to this time as WRMC will be unable to accommodate early arrivals.** Entry gates will be closed to allow for sanitizing/cleaning and waste removal between the previous show and the ApHC World Show.

Stalls in all barns must be vacated by 11:59 a.m. Sunday, November 6.

STALL REQUIREMENTS:

All horses participating in the show, i.e. entered, turn-back, assisting or any breed of horse on the grounds must be stalled. Horses CANNOT be tied to horse trailers.

Exhibitors are not allowed to change stalls without the approval of the stall manager. If you change stalls without the approval of the stall manager, you will be charged for both stalls. Stalls cannot be re-sold.

Air conditioning and/or heating units are not allowed in the barns. Individual cooling units will be confiscated until the end of the show.

Stall panels in permanent stalls shall NOT be removed under any circumstances. See STALL FEES for information on fees for removing panels in portable stalls.

Arena WerksTM.com

Making Dirt Great Again

"I want to thank Arena Werks for welcoming me to their team. Good ground is one of my top priorities in training horses. The Arena Werks Elite is the best I've ever used to keep my ground perfect. The quality of their product and the care they put into their customers takes them to a level above anything else out there."

– Aaron Moses

AQHA World Champion

Congress Champion, NSBA World Champion

2018, 2019, and 2020 NSBA #1 Open Rider

2020 AQHA World Show
Junior Pleasure Champion
Moonrageous
Owned by – Starland Ranch LLC

Shane Rux[®]

800-644-3724

arenawerksinfo@sbcglobal.net



1025 DOT
Water Trailer



10' Elite

PROVERBS 16:3

**VISIT ARENAWERKS.COM
TO SEE WHAT'S NEW AND EXCITING!**

STALL DECORATIONS:

If your stalls are located on an aisleway in the Burnett, Richardson-Bass, or Moncrief buildings, the ApHC requests that they be decorated for the duration of the show for presentation to the public and to minimize any potential hazards that occur while assembling decorations and which may cause harm to fellow exhibitors and horses. If they are not, you may not receive consideration for that location at subsequent shows.

Stalls in the Burnett and Richardson-Bass buildings are on concrete floors and stalls measure 9'10" wide by 9'8" deep.

Portable stalls (measuring 9'5" x 9'5") are set in the Moncrief building, Equine Multi-Purpose building and in all the cattle barns. Stalls in the Equine Multi-Purpose Building are on concrete floors. Stalls in the Moncrief building and cattle barns are on dirt floors.

All materials used in decorating stalls must be treated with a fire retardant or be made of fire-retardant material. Any fabric or paper used or draped on stalls must be fire-resistant or treated with flame retardant. Due to fire regulations, stall aisles cannot be blocked or closed off to through traffic. The Fire Marshall will be on-site randomly inspecting decorations for compliance with regulations. See FACILITY INFORMATION page 30 for complete regulations.

The person listed as "stalled with" is responsible for any damage to stalls, and for any clean-up of materials such as decorations, signs, fabric, nails, tacks, wires, etc. Any damages assessed by WRMC will be billed to the person listed as "stalled with".

STALL OFFICE HOURS:

The stall office is located in the Moncrief Building and will open on Wednesday, October 26 at 7:30 a.m. and will be open 24 hours a day thereafter through the last class of the show.

STALL CHECK-IN PROCEDURES:

After arriving at the Will Rogers Memorial Center, you must check-in at the stall office to receive your stall location.

You must verify with stall office personnel the names of all horses that will be stalled. You will receive a stall ledger from the stall office listing stall locations and proof of payment (only if changes are made after the original reservations were received). The ledger must be presented in the show office when picking up your exhibitor packet. Exhibitor packets for horses entered that do not have verified stall locations will not be released.

The person listed as "stalled with" is responsible for any damages and for ensuring that the stalls will be left in good, clean condition.

STALL MAINTENANCE:

Exhibitors are required to keep their stalls clean and neat, dispose of refuse matter in designated dump areas and remove all items and materials they attach to the stalls, including decorations and all signs.

For more information regarding Will Rogers Memorial Center stall regulations, please see FACILITY INFORMATION on page 21.

STALL FORFEITURE OF LOCATION:

Per Board motion, any suspended person or person otherwise ineligible to participate at the National and/or World Show(s) shall forfeit any preferred stall(s) location at the National and/or World Show(s). In connection with any member's stall entry

reservation application for the National and/or World Show(s), if the person they list as "being stalled with" is suspended or ineligible to participate at the National and/or World Show(s), the member applicant will forfeit their preferred stalling location(s) at the National and/or World Show(s) as applicable. All other members stalling with any suspended or ineligible person will forfeit their preferred stalling location(s).

Stalling location refers to any established or designated area that the suspended or ineligible person has usually occupied. At the end of the suspension or ineligibility period any such preferred stall location(s) shall not revert back to the suspended or ineligible person or other members who forfeited their preferred stalling location(s).

STALL BARN RULES:

See FACILITY INFORMATION on page 21.

STALL BEDDING:

Shavings are for sale at the WRMC grounds. Current shavings prices are \$9/bag of small, loose shavings or \$13/bag of large, compressed shavings or large mixed shavings. Orders can be placed at the shavings office located in the Barn 4. No outside commercial vendor deliveries will be permitted. Exhibitors are not allowed to bring their own shavings on to the grounds and will be billed for unauthorized shavings. Costs to remove unauthorized bedding will be billed to the exhibitor.

As a service to World Show exhibitors, the ApHC will accept pre-bedding orders on behalf of the WRMC for orders of 50 or more bags of shavings. A pre-bedding form is available online by clicking on the World Show logo at www.appaloosa.com. Submit pre-bedding forms completed in their entirety directly to the ApHC no later than October 10 and make checks payable to the ApHC. Requests not received in the ApHC office by October 10 will not be filled. In most cases, delivery of pre-bed orders will be made prior to your arrival on the grounds.

You may also purchase shavings from WRMC upon arrival at the grounds. During evening hours when the shavings office is closed, you may purchase a limited amount of shavings from WRMC through the ApHC stall office.

The shavings vendor is not affiliated with the ApHC. The ApHC assumes no responsibility and/or liability of any kind in connection with any bedding/shavings purchased from the on-site vendor.

FEED

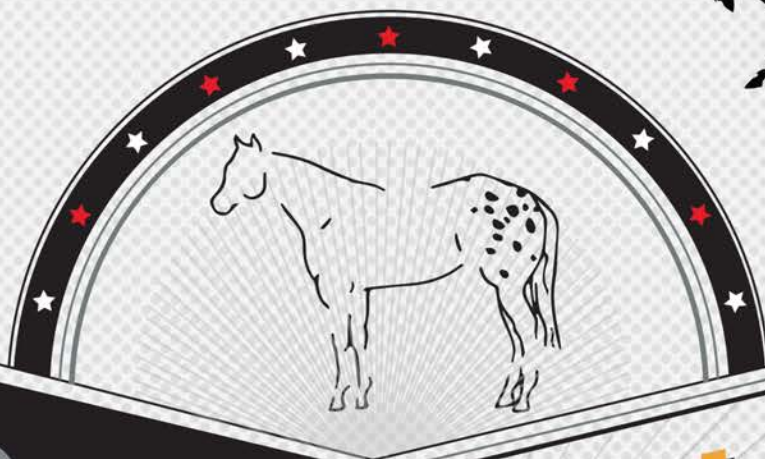
The Official Feed Supplier of the World Championship Show is Russell Feed & Supply. Only the Official Feed Supplier will be allowed to deliver feed or do business on the grounds. Orders can be placed by using the form available online by clicking on the World Show logo. Orders should be mailed directly to Russell Feed & Supply, NOT to the ApHC.

Russell Feed & Supply is not affiliated with the ApHC. WRMC regulations will not permit feed to be delivered to exhibitors from outside vendors, however exhibitors have the right to bring feed with them onto the WRMC property that has not been purchased from the on-site vendor.

The ApHC assumes no responsibility and/or liability of any kind or connection with any hay and/or feed purchased from the on-site vendor.

GOLF CARTS

Will Rogers Memorial Center requires that all operators of golf



ELITE STALL MAT RENTALS

ORDER
NOW

APPALOOSA

... WORLD CHAMPIONSHIP ...

OCTOBER

NOVEMBER



28

05



stallmatrentals.com

ORDER ONLINE TODAY!

carts observe the following rules to allow for safe and continued use of golf carts at the World Show. Any person operating a golf cart in an unsafe, reckless or dangerous manner will be detained by law enforcement officers. In some cases, golf carts can and will be impounded.

- Golf cart operators MUST have a valid driver's license with them at all times.
- Golf carts are prohibited inside the trade show and on arena concourses. Golf carts may be driven inside stall areas if operated in a safe manner with care exercised to avoid endangering people and animals.
- Golf carts may only be driven on the streets in the direction of traffic.
- Golf carts are prohibited inside all arenas unless the arena is specifically designated for that purpose.
- Golf carts may be used in show or exercise arenas only if operated by ApHC or WRMC show officials or personnel.
- Golf carts must yield to all pedestrians and horses and may not be parked blocking an entrance.
- Golf carts parked in front of handicapped entrances or ramps will be impounded.
- Golf carts can be parked on some sidewalks, but SHALL NOT BE DRIVEN on any sidewalks.

The use of the golf carts on Will Rogers Memorial Center grounds is a privilege. Anyone abusing this privilege will not be allowed to use any golf cart. Golf carts are not available for rental from the ApHC or the WRMC. See ad on page 19 for golf cart rental information.

PARKING

The following information has been provided by Will Rogers Memorial Center and details the parking requirements for the facility.

There is no charge for unloading either horses or trade show merchandise from the street. However you have to unload and move on – no street parking except for unloading. Exhibitors will need to set up their stall or booth after they unload since there is no parking on the streets. A parking fee will be charged when the trailer is moved to a parking lot.

Parking anywhere inside the complex is \$5/day per vehicle. Properly permitted vehicles may come and go from the property at will. Posted parking permit fees may differ from this, however parking for horse show attendees is \$5/day per vehicle. Please be sure to request the horse show fee when paying for parking.

There is no trailer parking inside the complex unless occupying a paid RV space. Trailer parking is not allowed south of the Moncrief building or the cattle barns.

RV spaces come with one parking pass for a tow vehicle at no extra charge. This pass will allow the vehicle to park in any lot on the property.

All of the parking attendants have the ability to take cash or credit cards. Multi day passes are available either on site or in advance online at www.culturaldistrictparking.com. Click on Appaloosa World Show for passes specific to this event. Online purchases require payment of a convenience fee. Purchases made on-site do not include this fee.

Please visit the ApHC Web site at www.appaloosa.com. Click on World Show and then on WRMC Parking for additional information and to get answers to frequently asked questions.

Trailers and/or vehicles violating posted or announced parking rules shall be subject to towing/impounding.

RECREATIONAL VEHICLES

WRMC offers RV spaces on the complex in various locations. Some spaces offer water/electricity only. There are 104 spaces north of the Richardson-Bass building that offer full hook-ups including sewer.

Space reservations are being accepted by the ApHC on a first-come, first-served basis. A reservation form can be found by clicking on the World Show logo on the home page at www.appaloosa.com. Spaces may be reserved at the lowest rates if received and paid in full by September 30.

All spaces should be reserved as soon as possible to guarantee availability.

ACCOMMODATIONS INFORMATION

The State of Texas provides a financial incentive package to the ApHC to host the World Championship Appaloosa Show & World Championship Appaloosa Youth Show in Fort Worth. In order to sustain their financial support, the ApHC must certify the number of hotel room nights utilized in Fort Worth during the show. Show attendees must provide lodging information when completing entries.

FARRIER

There is no official farrier on grounds during the World Show. Exhibitors may secure the services of any farrier they choose and these farriers are allowed on grounds without any pre-authorization from ApHC.

COMMERCIAL EXHIBIT INFORMATION

For information contact the Trade Show Coordinator, ApHC, 2720 W. Pullman Road, Moscow, ID, 83843, (208) 882-5578 ext. 256. The trade show will be open daily from 9 a.m. to 6 p.m. The trade show will close at noon on Saturday, November 5.

Exhibitors will not be allowed to sell retail items from their stall locations. Exhibitors wishing to sell retail items must purchase trade show space from the ApHC, pay all applicable fees and are subject to abide by a contractual agreement between the ApHC and said vendor.

Vendors are subject to Texas State retail and tax laws.

DOGS/PETS

See FACILITY INFORMATION regarding pet regulations.

ELIMINATION, FINALS AND SCORING

Scoring

For the majority of classes either a four-judge or a three-judge format will be used to compute placings. This will be determined by show management. In most four-judge formats, the low scores will be discarded and the remaining three scores added together to determine final placing. In the three-judge format, no scores will be discarded, all three scores will be added together to determine final placing.

In placed classes, the judge's placing will be converted into numerical scores according to this chart.

Great Discounts to get you Traveling Again



As the world slowly begins to reopen, we hope all of your postponed travel plans are soon back on track. Before you book your next adventure, remember that your **Appaloosa Horse Club Membership** gives you access to incredible discounts on everything you need for your next vacation!



Ready to hit the road? Explore great deals on your next rental car.

Avis

Your ApHC membership makes you an Avis Preferred member, which means you'll travel better, save time and gain access to exclusive offers. ApHC members always receive savings of up to 25% off base rates and enjoy even more perks like complimentary upgrades or a free weekend day. Skip the counter and paperwork and go straight to your car!

Association Code: AWD# A672061
Call 1-800-331-1212 or visit [avis.com/en/association/A672061](https://www.avis.com/en/association/A672061) to make your reservation.

Budget

Budget has proudly partnered with ApHC to offer its members a guaranteed savings of 25% off base rates, and complimentary membership in Budget Fastbreak. As one of the most recognized car rental brands with locations in more than 120 countries, you get to enjoy the fastest, easiest rental

experience, plus other great offers like dollars off, and a free upgrade.

Association Code: BCD B079569
Call 1-800-527-0700 or visit <https://www.budget.com/en/association/B079569> to make a reservation.



Want to book a staycation or hotel for your next trip? We got you covered...

Red Roof Inn

Red Roof Inn has over 600 hotels nationwide. Take advantage of your extra membership perks like 15% off traditional rates, free Wi-Fi, HBO, ESPN, CNN and pets that can stay free! Find great rooms, comfortable lodging and fantastic rates to make your next trip even more memorable.

To book, simply mention the Appaloosa Horse Club when you book your next reservation on site at any location or by calling 800-RED-ROOF (800-733-7663) Or visit ApHC's Red Roof Inn website at https://www.redroof.com/deals/partner/appaloosa_horse_club

Motel 6

Save even more off every day getaway deals! Motel 6 has partnered with ApHC to offer all its members a 10% discount at any of their 1,100+ locations in the U.S. and Canada. You'll find dependable, comfortable and pet friendly rooms with great service for the lowest price of any national chain.

To book your reservation call 1-800-4-Motel 6 or online by visiting <https://www.motel6.com/content/g6/en/home/cp/affinity.html> Discount Code: CP574130

Wyndham Hotels

As an ApHC member, you receive up to 20% off the "best available rate" at over 7,500 participating locations worldwide. Whether you are looking for an upscale hotel, all-inclusive resort or something cost-effective, Wyndham Hotels has the right hotel for you at the right price. Book online or call and use your exclusive discount ID number at the time of booking to lock in your savings!

ID number: 1000007489
Special Member Benefits hotline: 1-877-670-7088 Reserve your room online today: https://www.wyndhamhotels.com/?corporate_id=1000007487



Ready to explore?

Learn more by visiting Appaloosa.com/benefits-of-membership

1	120
2	105
3	91
4	78
5	66

6	55
7	45
8	36
9	28
10	21

11	15
12	10
13	6
14	3
15	1

Cuts

In large classes when cuts are necessary, the cuts will be determined by a random draw. Each cut will enter the arena for judging and will be placed by all judges. Top placing entries from each cut will return to the arena for a final go-round. The same exhibitor must exhibit the same horse in both the cut and the final. The same equipment must be used on each horse in the cut and the final.

Tie-Breaking Procedures

All ties, except first place in individual performance events, will be broken by a tie-breaking judge (pre-determined by show management before the class begins). If a tie occurs for first place in any individual performance class judged complete or in any individual performance class finals judged complete, there will be a work-off for first place only. Individual performance classes include western riding, reining, working hunter, cutting, trail, ranch trail, ranch riding and judged roping events.

In the event of a first-place tie in working cow horse, see Rule 741.F in the Official Handbook of the ApHC for tie-breaking procedures.

Eliminations

Eliminations may be held in classes when warranted by the number of entries in the class and shall be at the discretion of show management. Any horse receiving a no-time or a no-score in an elimination round will be eliminated. In case of a tie, except in stumps and stake races, all those tied will go forward to the finals. In the event that it is not necessary to run an elimination round, the class will be run complete at the time the final round is scheduled.

In Camas Prairie Stump Race and Nez Perce Stake Race, if a tie occurs in an elimination round for the last position in the finals bracket, those horses tied will re-run on time only with the fastest time advancing.

In timed calf roping, timed heading and heeling, and cutting, the combined scores (cutting) and times (roping) in the elimination round and the finals will be used to determine the final placing. In the finals, the working order shall be determined by the times (in roping). The horse with the fastest qualifying time (in roping) will be the last to work in the finals for that class. The working order in the finals of any cutting classes will be determined by a random draw of those qualified to compete in the finals. In timed heading and heeling, the entrant must have the same helper in both the elimination and final rounds.

Once an elimination round has been held, no change of horse/rider combination or tack/equipment is allowed for the finals.

In most classes, when possible the top 16 horses will be called back for the finals. In all cutting classes, the top 10 finalists will return for the finals.

AWARDS

Ribbons & Trophies

In all ApHC World Show and Youth World Show classes, a Champion trophy will be awarded to all first-place winners and

the Reserve Champion trophy awarded to second place. Ribbons will be awarded for 1st through 10th place.

Medallions & Non-Pro Medals

All ApHC open classes are medallion classes except green (western riding, western pleasure, trail, hunter under saddle) classes, ranch horse conformation, Champion of Champion classes, Windemere classes, freestyle reining, and stallion service auction futurity classes. There must be at least three entries shown in an open division class for it to be considered eligible for a medallion. See Rule 702.I.3 for further information.

All non-pro classes are medal classes except non-pro yearling longeline (western and hunter), novice cutting, novice games classes, non-pro ranch horse conformation, non-pro walk/trot classes, non-pro yearling in-hand trail, non-pro performance halter classes. There must be at least 3 horses shown in a non-pro class for it to be considered eligible for a medal. See Rule 903.A for further information.

Escrow of Awards

All awards and premium/award checks will be issued pending notification of drug testing results. If a horse tests positive for unapproved drugs or unacceptable levels of approved medication(s), all ribbons, trophies, and other awards must be held in escrow by the ApHC until notification of the Disciplinary Committee's decision.

Premium Payback

Halter and Performance classes: \$300 added to each class. Total purse includes \$30 of each entry fee (all horses entered in the class minus those vet scratched). Added money plus entry fee money will be divided as follows: 1st-40%; 2nd-25%; 3rd-15%; 4th-10%; 5th-5%; 6th-5%.

No premium payback will be given in non-pro equitation, horsemanship, showmanship or novice classes. All premium checks will be mailed to the current, first-listed owner or lessee on record only (as determined by ApHC records at the time class is held). Any other arrangements for premium award payments are between trainer and owner(s) and are not the responsibility of the ApHC. When class size is less than 6 entries, all unpaid premiums are retained by the ApHC. For tax purposes, a 1099M for premiums won will be issued to the current owner of record at the time of the show. In the instance of multiple owners, a 1099M will be issued to the first current owner listed on the Certificate of Registration. The social security number listed on the W-9 form should be that of the owner, or in cases of multiple owners, that of the first listed current owner.

Premium and/or award checks will be mailed after drug test results are received by the ApHC.

AWARD CALCULATIONS &

TIE-BREAKING PROCEDURES

Horses will receive points toward special open and non-pro awards for 1st through 10th place. First place will receive 11 points, 2nd place will receive 9 points, and so on down to last place which will receive 1 point unless otherwise specified. If there are less than 10 horses in a class, scores will be based on the number competing with the 1st place horse receiving one more point than the number of horses in the class, the 2nd place horse receiving 2 fewer points than the 1st place horse and the 3rd place horse receiving 1 less point than the 2nd place horse



You are cordially invited to the

Hall of Fame

Reception

Appaloosa Horse Club, INC.

*The Hall of Fame Reception will take place October 30th, 2022, at the
Will Rogers Memorial Center in Fort Worth, Texas
with social hour starting at 6:00 p.m. and a presentation to follow at 7:00 p.m.*

Heavy hors d'oeuvres will be served.

There will be a no-host bar.

*Advance tickets may be purchased for \$20 at www.appaloosa.com/reception if purchased by
October 14, 2022.*

A limited number of tickets will be available at the door for \$30 each.

We hope to see you there!

WORLD CHAMPIONSHIP
APPALOOSA SHOW 2022

and so on down to last place which shall receive 1 point unless otherwise specified.

Unless otherwise stated under individual award listing, in the case of a tie, the horse earning points in the greater number of classes that count toward that award will be the winner. If that fails to break the tie, the horse placing 1st through 10th over the greatest number of total entries will be the victor.

In the case of a tie in the non-pro division, the non-pro earning points in the greater number of classes that count toward the award will be the winner. If that fails to break the tie, the non-pro earning points in the greater number of performance classes will be the winner. If that fails to break the tie, the non-pro placing 1st through 10th over the greatest number of total entries will be the winner.

The ApHC does not accept responsibility for misprints in daily award tabulations. All information is not final until verified.

WORLD'S BEST APPALOOSA

In order to compete for this title, a horse must enter and compete in a minimum of three categories to be eligible. The horse's top two World's Best point earning placings in each of five categories will be used to calculate placing. In addition, the horse must earn World's Best points in a minimum of two categories. Categories for tabulation of World's Best Appaloosa are listed below. ONLY the following classes will be used for tabulation of this award:

- Halter (all age divisions except weanlings and FPD classes), Most Colorful at Halter, Hunter in Hand (except yearling division), and Performance Halter.
- Junior & Senior Western Pleasure, Junior & Senior Hunter Hack, Pleasure Driving, Junior & Senior Hunter Under Saddle, and Saddle Seat Pleasure.
- Junior & Senior Reining, Junior & Senior Western Riding, Junior & Senior Trail, Working Hunter, Junior & Senior Ranch Riding, Junior & Senior Ranch Trail, Junior & Senior Ranch Rail Pleasure, Junior & Senior Ranch Reining.
- Camas Prairie Stump Race, Nez Perce Stake Race, Rope Race, Keyhole Race and Figure 8 Stake Race.
- Steer Daubing, Junior & Senior Cutting, Heading & Heeling, Junior & Senior Judged Tie-Down Roping, Junior & Senior Judged Heading, Junior & Senior Judged Heeling, Timed Tie-Down Roping, Junior & Senior Working Cow Horse.

The following table will be used for tabulating World's Best points:

No. of Horses	1st	2nd	3rd	4th	5th	6th	7th	8th	9th	10th
3-5	1									
6-8	2	1								
9-11	3	2	1							
12-14	4	3	2	1						
15-17	5	4	3	2	1					
18-20	6	5	4	3	2	1				
21-23	7	6	5	4	3	2	1			
24-26	8	7	6	5	4	3	2	1		
27-29	9	8	7	6	5	4	3	2	1	
30 & Over	10	9	8	7	6	5	4	3	2	1

Ties will be broken in the following manner: 1) The horse placing in the greater number of categories in first through tenth place, then 2) the horse placing in the greater number of classes listed above in first through tenth place, then 3) the horse defeating the

greater number of entries in the classes listed above.

The horse named World's Best Appaloosa will receive: \$1,500 from the Appaloosa Horse Club, a three-horse gooseneck aluminum trailer with dressing room for one year's use compliments of Twin Cities South Trailer Sales, LLC of Pilot Point, Texas – Gary & Tammy Raak, and a custom-made Elite Custom Saddles Trophy Saddle.

The reserve World's Best Appaloosa will receive an etched glass commemorative award sponsored by the Appaloosa Horse Club.

CHAMPION CATTLE HORSE

Classes that count toward this award are 141, 142, 161, 162, 181, 182, 220, 231, 232, 236, 237, 240, and 250.

Champion: \$1,000 from the Appaloosa Horse Club and a custom sterling silver Montana Silversmiths belt buckle.

Reserve Champion: Custom sterling silver Montana Silversmiths belt buckle.

CHAMPION WESTERN HORSE

Classes that count toward this award are 341, 342, 343, 361, 362, 381, 382, 421 and 422.

Champion: \$1,000 from the Appaloosa Horse Club and a custom sterling silver Montana Silversmiths belt buckle.

Reserve Champion: Custom sterling silver Montana Silversmiths belt buckle.

CHAMPION ENGLISH HORSE

Classes that count are 401, 402, 430, 441, 442, 460 and 500.

Champion: \$1,000 from the Appaloosa Horse Club and a custom sterling silver Montana Silversmiths belt buckle.

Reserve Champion: Custom sterling silver Montana Silversmiths belt buckle.

CHAMPION GAMES HORSE

Classes that count are 270, 280, 290, 300 and 600.

Champion: \$1,000 from the Appaloosa Horse Club and a custom sterling silver Montana Silversmiths belt buckle.

Reserve Champion: Custom sterling silver Montana Silversmiths belt buckle.

CHAMPION RANCH HORSE

Classes that count are 541, 542, 552, 554, 555, 556, 557, 558 and 559.

Champion: \$1,000 from the Appaloosa Horse Club and a custom sterling silver Montana Silversmiths belt buckle.

Reserve Champion: Custom sterling silver Montana Silversmiths belt buckle.

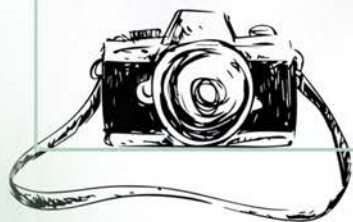
HIGH-POINT OVER FENCES HORSES

An award will be presented to the high-point over fence horse in the open divisions. Classes that count toward the open award are 401, 402, 500, 520, and 523.

An award will be presented to the high-point over fence horse in the non-pro division. Classes that count toward the non-pro award are 150, 160 and 170.

Proud to be the official
ApHC World Show Photographer

2022
WORLD
CHAMPIONSHIP APPALOOSA SHOW



Ruehle Photographix

Equine Event & Portrait Photography

www.ruehlephotographix.com

262-470-3633

ruehle.becky@gmail.com

Awards are sponsored by Page and Dawson Simpson of Jacksonville, Florida.

WORLD SHOW LEADING BREEDER

An award will be given to the breeder earning the most points from horses placing in the top ten at the World Championship Show.

For a breeder to be eligible, at least three of that breeder's horses must be exhibited. The breeder is determined by ApHC records. For example, John Doe (#123456) may compete against his wife Jane Doe (#654321) and against his farm John & Jane Doe Acres (#111222). The first listed breeder according to ApHC records and as printed on the Certificate of Registration will receive points for that horse's placing. This award will be calculated based upon pre-entries only. Horses will earn points counting toward the Leading Breeder Award for receiving 1st through 10th place. First place will receive 11 points, 2nd place will receive 9 points, and so on through 10th place which will receive 1 point unless otherwise specified. If there are less than 10 entries in a class, points will be computed based on the number competing. However, first place will always receive 2 more points than 2nd place and 2nd place will receive 1 more point than 3rd place and 3rd place will receive one more point than 4th place and so on.

In case of ties, the breeder of horses placing 1st through 10th over the greater number of entries will be the winner. If that fails to break the tie, the breeder of horses placing 1st through 10th in the greatest number of classes will be the winner.

The ApHC does not accept responsibility for misprints in daily award tabulations. All information is not final until verified.

The following open classes will count toward the World Show Leading Breeder Award:

HALTER: O24, O27, O16, O17, O28, O18, O19, O29, O30, O31, O32, O33, O34, O35, O53, O54, O55, O56, O57, O58, O59, O73, O74, O75, O76, O77, O78, O86, O94, O95, O96.

PERFORMANCE: O141, O142, O161, O162, O181, O182, O220, O231, O232, O236, O237, O240, O250, O270, O280, O290, O300, O341, O342, O343, O361, O362, O381, O382, O388, O393, O394, O401, O402, O421, O422, O423, O424, O426, O427, O430, O431, O432, O441, O442, O444, O445, O460, O500, O520, O523, O541, O542, O554, O555, O556, O557, O558, O559.

The Leading Breeder will receive an etched glass award to commemorate this achievement sponsored by the Appaloosa Horse Club.

KAREN GRIMM MEMORIAL OVERALL HIGH POINT EXHIBITOR

An award will be given to the overall high point exhibitor in open classes at the World Show. The exhibitor can show multiple horses. Only open classes count. Multiple placings may be earned by one exhibitor who is able to show more than one horse in classes in which this is allowed. In this case, all placings earned by the exhibitor will count toward the award.

Points will be awarded to the exhibitor for 1st through 10th place. First place will receive 11 points, 2nd place will receive 9 points, and so on down to 10th place which will receive 1 point unless otherwise specified. If there are less than 10 horses in a class, scores will be based on the number competing with the 1st place horse receiving one more point than the number of horses in the class, the 2nd place horse receiving 2 fewer points than the 1st

place horse and the 3rd place horse receiving 1 less point than the 2nd place horse and so on down to last place which shall receive 1 point unless otherwise specified. The highest point-earning exhibitor based on performance in all open classes will be named the overall high point exhibitor.

In case of a tie, the award will be presented to the exhibitor who 1) competed in the greatest number of classes. If that fails to break the tie, the award will be presented to the exhibitor who 2) defeated the greatest number of entries.

ALL-AROUND NON-PRO

In order to compete for all-around honors, a contestant must compete in at least 3 performance events. They must also compete in 3 or more categories (halter is considered one category). Novice non-pro, 35 & over non-pro, masters non-pro, walk/trot non-pro, Windemere, Champion of Champion classes, non-pro yearling in-hand trail and non-pro yearling longeline (western and English) don't count toward these awards.

The winner of the all-around is determined by adding the points earned by each contestant and his/her horse in every approved class in which he/she has placed in the top ten. Points are compiled on a one horse-one exhibitor basis. A contestant may exhibit more than one horse; however, the points earned by the contestant with each will be compiled separately.

Scoring and tie-breakers for this award are outlined under AWARD CALCULATIONS & TIE-BREAKING PROCEDURES above.

No points are awarded to a disqualified contestant, regardless of the number in the class.

Categories for tabulation of the All-Around non-pro are listed below and ONLY the following non-pro classes will count toward this award:

- Showmanship at Halter
- Bareback Horsemanship, Hunt Seat Equitation, Hunt Seat Equitation Over Fences, Saddle Seat Equitation, Western Horsemanship
- Camas Prairie Stump Race, Figure 8 Stake Race, Keyhole Race, Nez Perce Stake Race
- Hunter Hack, Hunter Under Saddle, Pleasure Driving, Saddle Seat Pleasure, Trail, Western Pleasure, Western Riding, Working Hunter, Ranch Riding, Ranch Trail, Ranch Rail Pleasure
- Cutting, Breakaway Roping, Judged Tie-Down Roping, Judged Heading, Judged Heeling, Timed Tie-Down Roping, Timed Heading & Heeling, Reining, Ranch Reining, Working Cow Horse, Steer Daubing, Boxing
- Halter (all age divisions), Hunter In Hand (all sex divisions), Most Colorful At Halter, Performance Halter

NON-PRO SPECIAL AWARDS

Novice non-pro classes, 35 & over non-pro classes, masters non-pro classes, non-pro walk/trot classes and non-pro ranch conformation only count toward awards in those respective divisions. They do not count toward any other non-pro special awards.

Non-pro yearling longeline (western and hunter), and non-pro yearling in-hand trail do not count toward any special awards.

A non-pro may use more than one horse and all points will be combined, except where specifically stated. **In classes in which a non-pro can exhibit more than one horse (trail, games, western riding, reining, cutting, roping, ranch riding, ranch trail, over fences etc.) only the non-pro's highest placing in each class will count toward the high-point award.**

CAPTURE THE MOMENT



Action Video
professional video production
& webcasting

Official Videographer of the ApHC

Watch the Live Webcast

**Order Your HD Videos on
DVD or Digital Upload**

www.321actionvideo.com

ApHC ALL-AROUND NON-PRO

\$500 from the Appaloosa Horse Club, an Elite Custom Saddles trophy saddle, custom sterling silver Montana Silversmiths belt buckle and a three-horse gooseneck aluminum trailer with dressing room (one year's use) compliments of Twin Cities South Trailer Sales LLC of Pilot Point, TX and Gary & Tammy Raak.

HIGH-POINT & RESERVE NON-PRO

High-Point: \$250 from the Appaloosa Horse Club, Elite Custom Saddles trophy saddle and a custom sterling silver Montana Silversmiths belt buckle.

Reserve High-Point: A custom sterling silver Montana Silversmiths belt buckle.

HIGH-POINT & RESERVE 35 & OVER NON-PRO

High-Point: Custom sterling silver Montana Silversmiths belt buckle.

Reserve High-Point: Custom sterling silver Montana Silversmiths belt buckle.

HIGH-POINT & RESERVE MASTERS NON-PRO

High-Point: Custom sterling silver Montana Silversmiths belt buckle.

Reserve High-Point: Custom sterling silver Montana Silversmiths belt buckle.

HIGH-POINT & RESERVE NOVICE NON-PRO

High-Point: Custom sterling silver Montana Silversmiths belt buckle.

Reserve High-Point: Custom sterling silver Montana Silversmiths belt buckle.

HIGH-POINT & RESERVE WALK/TROT NON-PRO

High-Point: Custom sterling silver Montana Silversmiths belt buckle.

Reserve High-Point: Custom sterling silver Montana Silversmiths belt buckle.

CHAMPION NON-PRO GAMES HORSE

Classes that count are N270, N281, N290, N301. Calculation for this award is a one horse/one rider calculation.

Champion: Custom sterling silver Montana Silversmiths belt buckle

CHAMPION NON-PRO CATTLE HORSE

Classes that count are N456, N380, N390, N410, N420, N440, N450, N600, N610, N620.

Calculation for this award is a one horse/one rider calculation.

Champion: Custom sterling silver Montana Silversmiths belt buckle.

CHAMPION NON-PRO RANCH HORSE

Classes that count are N650, N660, N670, N680, N690. Calculation for this award is a one horse/one rider calculation.

Champion: Custom sterling silver Montana Silversmiths belt buckle.

CHAMPION NON-PRO HALTER EXHIBITOR

Classes that count are N503, N504, N505, N506, N507, N513, N514, N515, N516, N517, N523, N524, N525, N526, N527, N540, N550, N560, N570, N508, N518,

N528.

Calculation for this award is based upon placings for the non-pro who may show multiple horses.

Champion: Custom sterling silver Montana Silversmiths belt buckle.

CHAMPION NON-PRO WESTERN EXHIBITOR

Classes that count are N330, N340, N350 and N370. Calculation for this award is based upon placings for the non-pro who may show multiple horses.

Champion: Custom sterling silver Montana Silversmiths belt buckle.

CHAMPION NON-PRO SHOWMANSHIP/EQUITATION EXHIBITOR

Classes that count are N110, N140, N160, N310, N320, N360. Calculation for this award is based upon placings for the non-pro who may show multiple horses.

Champion: Custom sterling silver Montana Silversmiths belt buckle.

CHAMPION NON-PRO ENGLISH EXHIBITOR

Classes that count are N120, N130, N150, N170, N190. Calculation for this award is based upon placings for the non-pro who may show multiple horses.

Champion: Custom sterling silver Montana Silversmiths belt buckle and award from Schneider's Saddlery – the official English sponsor of the Appaloosa Horse Club.

NON-PRO SPORTSMANSHIP

Custom sterling silver Montana Silversmiths belt buckle.

ADDITIONAL AWARDS & SPONSORS

As an official ApHC award supplier, Schneider's Saddlery provides \$5000 in awards for the World Championship and National Championship/Youth World Championship Awards

CLASS INFORMATION

FREESTYLE REINING

See rule 716.F in the Official Handbook of the ApHC for current rules. Exhibitors are required to submit the following items to the show office no later than noon, Wednesday, November 3.

- List of props. Note: Props may not include open flames or live animals (except that additional horses may be allowed in the arena). Show management reserves the right to rule on props in addition to music and dress.
- CD with contestant name, horse name and back number. CDs should only contain the musical track for the performance. Note: Exhibitors be aware that the audio equipment provided by WRMC may not play CDs produced on your computer. Music will be tested in advance of the performance if provided by the deadline. It is the responsibility of the exhibitor to have alternate music available should the CD submitted not play.
- Opening script (optional)
- Specific instructions concerning the script, music and lighting. Instructions should be explicit and simple.

Note: There are no spotlights available for the performance. There are two levels of house lights, either low or regular. Low house lights are allowed during set-up for each individual performance and during the first 15 seconds and last 15 seconds of any individual performance. At all other times, house lights must

BEST *of the* WEST GIFT EXPO

October 28 – November 5, 2022



Commercial vendor information located
at www.appaloosa.com or contact the Marketing Department
at (208) 882-5578 ext. 256 or marketing@appaloosa.com

be on. When submitting your music and instructions, indicate light levels to be used during your performance.

Freestyle Reining Awards

\$5,000 added money will be paid out according to the following schedule: Champion-\$2,250, Reserve Champion-\$1,000, 3rd place-\$650, 4th place-\$450, 5th place-\$200. The Highest Placing Non-Pro will receive \$450 in addition to any other monies earned by placing in 1st through 5th place.

Note: In order to be eligible for non-pro awards, the exhibitor must be enrolled in the ApHC non-pro program and must meet all non-pro requirements (including ownership requirements) as outlined in the Official Handbook of the ApHC.

Freestyle Reining Payback

Payback: 100% of the entry fee will be paid back according to the following table:

Entries	2-5	6-9	10-13	14-18
Placing 1 st	60%	45%	40%	35%
2 nd	40	37	30	26
3 rd		18	20	19
4 th			10	13
5 th				7

HERITAGE

All entries for ladies' and men's heritage class must submit a type-written, double-spaced description of their costume. This description must not be more than 200 words, written in third person and must be submitted to the show office by 6:00 p.m. the day prior to the class. The announcer will read the costume description for each entrant during the course of the class. The ApHC reserves the right to edit content. When the announcer has finished reading the description, each exhibitor will have one minute (this will be timed) to answer questions posed by the judges or to give additional information about their costume. At the expiration of the one-minute time limit, the judges will move on to the next exhibitor without delay.

NSBA DUAL-APPROVED CLASSES

Beginning January 1, 2022, all horses competing in any NSBA class (including dual-approved classes) will be required to be registered with NSBA in the current owner's name.

Entry Fee - \$20. There is no post entry charged for NSBA entries.

The ApHC has entered into an agreement with the National Snaffle Bit Association (NSBA) to approve classes for NSBA points and awards. In order to compete for NSBA recognition, the owner and exhibitor of the horse must be NSBA members. These classes will run concurrently with regular ApHC classes. Those exhibitors who wish to compete for NSBA awards and points in the available classes must either complete the NSBA entry form available online, or check the NSBA box under each eligible class using the online entry system. Owners and exhibitors competing for NSBA dual-approved recognition must provide proof of NSBA membership or purchase NSBA membership at the time entries are made.

The ApHC will provide class results to NSBA for inclusion in NSBA standings. Those exhibitors receiving first place NSBA honors in these classes will also receive a NSBA trophy.

To purchase NSBA membership, contact:
National Snaffle Bit Association
4203 Grove Avenue
Gurnee, IL 60031
(847) 623- 6722 phone
(847) 625-7435 fax

No refunds will be given for NSBA dual-approved class fees.

For a complete list of eligible classes, refer to the schedule in this premium book for classes designated as NSBA-dual approved.

TEAM ROPING (non-pro)

In non-pro judged heading and judged heeling classes, the non-pro will be allowed to rope with any partner of their choosing. Non-pro ropers are not required to team rope with a non-pro member. However, all partners must be members in good standing of the ApHC and must use horses registered with the ApHC. Headers are not allowed to "tie-on" in non-pro judged heeling.

YEARLING LONGE LINE

See the Official Handbook of the ApHC for complete rules. At the World Championship Appaloosa Show, each exhibitor may show a maximum of two horses in each longeline class including open longeline, stallion service auction longeline, non-pro longeline and any specialty association longeline classes.

MOST COLORFUL AT HALTER

Given in Memory of Jim Wild, 1st place will receive \$500, 2nd place will receive \$300 and 3rd place will receive \$150 and 4th through 10th place will each receive \$100. The Jim Wild Memorial is sponsored by Flying W Appaloosa Ranch of Sarcoxie, MO.

WINDEMERE HUNTER CLASSIC

High-Point Classes & Calculations

(Round 1) Horses must show in O523 Pre-Green Hunter, O520 Green Hunter or O500 Working Hunter. Or the horse may be shown and count points in N170 Non-Pro Working Hunter or Y360 Youth Working Hunter but only if the horse is not being shown in any open working hunter class. These classes will be considered "Round 1" and each horse may earn points from one class in round 1 toward the overall high-point award standings. If a horse is shown in more than one open class in round 1, they will count points toward the award from the class in which they earned the highest number of points. (Example - if the horse places 1st of 3 horses in one class and earns 4 points and also places 5th in a class of 12 horses thereby earning 6 points, the horse will receive 6 points toward the high- point award in round 1.) Horses shall only count points from non-pro working hunter or youth working hunter toward the high-point award if they are not shown in any of the open classes listed above.

(Round 2) All horses competing for the Windemere Hunter Classic high-point award must enter O528 Windemere Hunter Classic in round 2. This is a working hunter class in which all horses compete against every other horse competing for the high-point award. Fence heights will vary in this class to allow for pre-green and green horses to maintain their class eligibility. The Pre-Green course will include fences ranging in height from 2'6" - 2'9". The Green course will include fences ranging in height from 2'9" - 3'0". The open course will include fences ranging in height from 3'0" - 3'3". The working order in the class will be determined by the fence height at which each horse jumps. Horses placing 1st through 10th in the Hunter Classic in round 2 will earn points toward the high-point award. This is a non- qualifying class and any horse may enter regardless of whether or not they competed in round 1. Horses ridden by non-pro or youth competitors and not shown in any open classes will jump fence heights corresponding with their non-pro or youth classes.

Payback in this class will be according to Premium Payback rules contained in this premium book except that there will be no add-

ed money to the payback purse. Post entry fees apply to horses entered after the pre-entry deadline. All other rules contained in this premium book apply to entries in this class. Ribbons will be awarded through 10th place in this class.

(Round 3) All horses competing for the high-point award will compete in class O529 Windemere Hunter Under Saddle Classic. Horses will be shown at the walk, trot and canter both directions on the rail. Judges may ask for variations of gaits including extended gaits and/or hand gallop. Judges will place this class as a rail class. Ribbons will be awarded through 10th place in this class. Horses placing 1st through 10th in the Hunter Under Saddle Classic in round 3 will earn points toward the high-point award. This is a non-qualifying class but is limited to horses that competed in the Hunter Classic class in round 2.

The entry fee for this class is \$60. Post entry fee of \$90 is due for those horses entered after the pre-entry deadline. \$45 from each entry fee paid into this class (or \$65 from each post entry fee) will be paid back to the overall top point-earning horses in the Windemere Hunter Classic High-Point Award calculation.

See AWARD CALCULATIONS & TIE-BREAKING PROCEDURES for information on how points are awarded in each class/round toward the high-point award standings.

Awards & Sponsors

Awards will be given to the top 10 point-earning horses based upon calculations from all three rounds.

Sponsorship money received prior to the World Show will be

paid back to top point-earning horses in the high-point calculations. In addition, a portion of entry fees from round 3 will be added to the payback purse for the overall high-point winners.

Additional information on payback and awards will be available at the World Show as the breakdown is dependent upon the number of horses entered.

STALLION SERVICE AUCTION INCENTIVE CLASSES

Horses entering these classes must meet all Stallion Service Auction eligibility requirements. Horses may enter one or more classes (if eligible) to compete for incentive monies.

There is a \$150 pre-entry fee for each class with a post entry fee of 1.5 times the pre-entry fee (or \$225). Post entries must be received and paid for by 6 p.m. the day prior to the day each class is scheduled. No refunds will be issued in Stallion Service Auction incentive classes.

World Show trophies and ribbons will be presented in each class. Incentive payouts will be held pending notification of drug testing results.

Payouts will be issued according to the following scale.



Congratulations
TOP 10
Celebrate
your success!

20% Off
ad rates in Winter 2023
Appaloosa Journal
(208) 882-5578 ext. 256 • advertising@appaloosajournal.com

PAYOUT SCHEDULE

Yearling Classes

	1st	2nd	3rd	4th	5th	6th	7th
1	100%						
2-5	60%	40%					
6-9	45%	35%	20%				
10-13	40%	30%	20%	10%			
14-18	34%	27%	20%	10%	9%		
19-24	32%	22%	19%	10%	9%	8%	
25-28	28%	22%	17%	10%	9%	8%	6%

\$2500 CHAMPION OF CHAMPIONS HUNTER UNDER SADDLE

\$2500 CHAMPION OF CHAMPIONS WESTERN PLEASURE

Beck Farms, 3G Performance Horses and Rockin MD Ranch are the proud sponsors of the Champion of Champions Hunter Under Saddle and Western Pleasure Classes.

The top 3 horses in open (junior, senior, two-year-old, three-year-old, green) hunter under saddle classes and non-pro (non-pro, 35 & over, masters, novice) hunter under saddle classes and ApPHA hunter under saddle classes are eligible to return and compete in the \$2500 Champion of Champions class. The entry fee is \$100 and 100% of entry fees will be added to the \$2500 added money to determine the payout in the class. A random draw at the conclusion of the class will be held to award \$250 to anyone not placing in the top 3.

The top 3 horses in open (junior, senior, two-year-old, three-year-old, green, men's, ladies') western pleasure and non-pro (non-pro, 35 & over, masters, novice) western pleasure classes and ApPHA western pleasure classes are eligible to return and compete in the \$2500 Champion of Champions class. The entry fee is \$100 and 100% of entry fees will be added to the \$2500 added money to determine the payout in the class. A random draw at the conclusion of the class will be held to award \$250 to anyone not placing in the top 3.

Two new judges will judge these classes who have not seen the horses compete during the show and who will only be judging these events.

If a horse wins a title in more than one class, owners can choose which class they represent when showing in Champion of Champions.

Examples:

- 1 - If a horse becomes eligible as a result of placing in the top 3 in 35 & over non-pro western pleasure and junior western pleasure, the owner can choose to exhibit the horse as a non-pro or the rider that exhibited the horse in the junior class can ride the horse in champion of champions.
- 2 - If a rider becomes eligible as a result of placing in the top 3 in more than one open class, they may choose which horse to ride in champion of champions. The owner(s) of other eligible horses ridden by that exhibitor may designate a catch rider for the champion of champions class but the new rider MUST have already exhibited in a class at the World Show or the owner of the horse is

eligible to ride the horse in champion of champions even if they have not shown in a class at the World Show.

- 3 - If a non-pro rider becomes eligible as a result of placing in the top 3 in more than one non-pro class on different horses, they may choose which horse to ride in champion of champions. They may select another eligible non-pro rider to exhibit their additional horse(s) but that rider must meet non-pro eligibility requirements to show the horse, meaning that all non-pro ownership and membership requirements must be satisfied OR they may select an open catch rider to exhibit their extra horse(s) but any open catch rider MUST have already exhibited in a class at the World Show.

Entries placing below 3rd place in any class will not be moved up in the event of a vacancy in the class. All ApHC equipment and attire rules apply in both classes.

Payout is based upon the number of entries in the class as follows. A W-9 must be on file for the first listed owner of the horse in order to receive payback:

	1st	2nd	3rd	4th	5th	6th
1	100%					
2-5	2	60%	40%			
6-9	3	45%	35%	20%		
10-13	4	40%	30%	20%	10%	
14-18	5	34%	27%	20%	10%	9%

\$2500 CHAMPION OF CHAMPIONS HALTER

Jarrell & Kate Jackson are the proud sponsors of the Champion of Champions Halter class.

The first place horse in each open and non-pro halter class (weanling, yearling, two-year-old, three-year-old, aged and broodmare (open only) classes) are eligible to return and compete in the \$2500 Champion of Champions class. There is no entry fee to participate.

If a horse becomes eligible as a result of winning both an open and non-pro class, the non-pro owner of the horse has the option to show the horse or may choose to have the horse shown by the person who exhibited the horse to the win in the open class. Horses placing below the winning entry will not be moved up to fill a vacancy in the Champion of Champions class.

Two new judges will judge these classes who have not seen the horses compete during the show and who will only be judging this event.

This is a WINNER TAKE ALL event in which the overall Champion of Champions horse will receive the title, trophy and \$2500 purse.

In all Champion of Champions classes, monies will be paid to the first-listed owner of the horse at the time the horse was shown pending drug testing results.

WORLD CHAMPIONSHIP APPALOOSA SHOW for EQUESTRIANS WITH DISABILITIES

The Appaloosa Horse Club in conjunction with the Appaloosa Foundation (a charitable 501(c)(3) organization) are sponsoring classes for equestrians with disabilities. There are 19 available classes that will be held Friday and Saturday, November 4-5 in the W.R. Watt and John Justin Arenas at the Will Rogers Memorial Center. This event is open to all breeds of horses. Exhibitors

must be a member of ApHC to compete. Those exhibitors wishing to compete for NSBA awards must also be NSBA members.

There are classes available for a variety of rider skill levels and including a Veteran's division.

There is no entry fee to participate. Stall fees must be paid for each horse entered which can then be shown by multiple exhibitors during the show.

The entry forms and stall forms are available on the ApHC web site at www.appaloosa.com.

AWARDS: World Champion trophy & jacket in each class, Reserve World Champion trophy in each class, ribbons to top 10 in each class.

For more information, please visit the ApHC web site at <http://www.appaloosa.com/world-show/world-show.htm> for updated information, show & class sponsors and entry forms.

ALL DONATIONS TO SUPPORT THIS EVENT SHOULD BE MAILED TO APPALOOSA HORSE CLUB, DIRECTED TO THE

APPALOOSA FOUNDATION AND ARE TAX DEDUCTIBLE.

CONTACT INFORMATION:

Appaloosa Horse Club
2720 W Pullman Road Moscow, ID 83843
(208) 882-5578 Phone
(208) 882-8150 Fax
www.appaloosa.com
showsecretary@appaloosa.com

Use the following address to ship PRIOR to the show:

Will Rogers Memorial Center
c/o Appaloosa World Show
3401 West Lancaster Ave Fort Worth, TX 76107
(817) 871-8150 Phone
(817) 871-8170 Fax

Use the following address to ship DURING the show:

Will Rogers Memorial Center
c/o Appaloosa World Show
1501 Rip Johnson Dr
Fort Worth, TX 76107

FREESTYLE REINING



**\$5,000
ADDED**

**\$450
TO THE
HIGHEST
PLACING
NON-PRO**

**FRIDAY
NOVEMBER
4TH!**

Larry Williams
PHOTOGRAPHY
© editorial

SHOW OFFICIALS

Executive Secretary	Kristopher Byrd
Show Manager	Keri Minden-LeForce
Arena Manager	Jack Owen
Judges' Advisor	Joe Carter
Director of Marketing	Jonathan Biles
Show Secretary / Judges' Coordinator	Sarah Allenby
Scoring	ApHC I.T. Staff
Stall Manager	Alpha Russell
Assistant Stall Manager	Chris Blakely
Inspectors	Butch McGlothlin, Jerry Banks
Announcers	Denny Oviatt, Clark Scoggin, Georgianna Renouard
Drug Testing Veterinarian	Jeff Pollock, D.V.M

SHOW SERVICES

Show Veterinarian	Equine Sports Medicine – Whitesboro, TX
Photographer	Becky Ruehle Photography, LLC
Videographer	3 2 1 Action Video
Over Fences Course Equipment & Design	Tucker Williams, Classy Courses Inc.

OFFICIAL JUDGES

Andrea Simons	Aubrey, TX
Robert Meneely	St. Simons Island, GA
Tony Burris	Stoneville, NC
Steve Bennett	Greensboro, NC
Cheryl Ogle	Moscow, TN
Janette Dublin	San Angelo, TX
Lori Gordon	Washington, PA
Kelly Hedges	Perrysburg, NY
Sandra Curl	Vero Beach, FL
Debra Jarvis	Kaufman, TX

NCHA CUTTING JUDGES

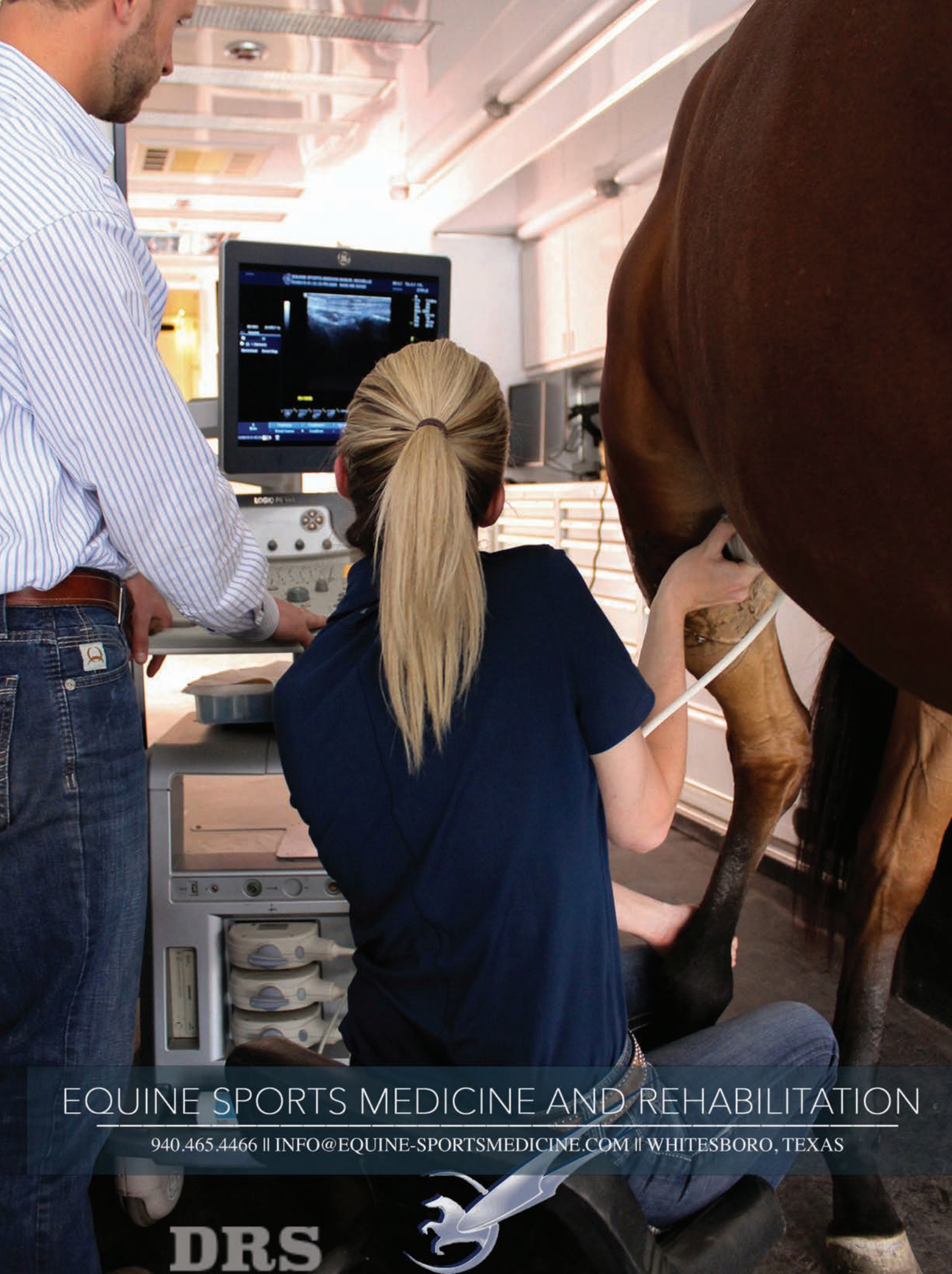
Jason Taylor	Alvord, Texas
Jason Surles	Bowman, Georgia

RING STEWARDS

Debbie McMasters	Madison, TN
John Tabb	Greenbrier, TN
Alan Henderson	Lafayette, NJ
Nico Perrin	Nevilly LeReal, France
Ron McMillian	Collinsville, OK
Heather Northcutt	Middletown, MO
Dawnell Shelly	Tolar, TX

EQUIPMENT JUDGES

Delena Doyle	Azle, TX
Sherry Haynes	Stephenville, TX
Cindy Chilton-Moore	Broken Arrow, OK



EQUINE SPORTS MEDICINE AND REHABILITATION

940.465.4466 || INFO@EQUINE-SPORTSMEDICINE.COM || WHITESBORO, TEXAS

DRS





2022 World Championship Appaloosa Show

Tentative Class Schedule

Wednesday, October 26

7:30 AM - 24 hours

Stall Office Open – Moncrief Building

Horses Move-In

7:30 AM – 8:00 PM

Vendors Move-In

Thursday, October 27

8:00 AM – 5:00 PM

Show Office Open – R/B Building

Check-in to pick up exhibitor numbers and packets

Inspection Station Open – Burnett Building

Vendors move-in

4:00 PM – 24 hours

At-Will Trail Practice – Multi-Purpose Building

3:00 PM – 5:00 PM

Ride the Pattern Demonstration – John Justin Arena

✓ indicates NSBA dual-approved class

< indicates ApRRA sweepstakes class

Friday, October 28

Proudly sponsored by Rockin Spots Appaloosas – Jordan Kelly & Jeremy Gardemann

8:30 AM

JOHN JUSTIN ARENA

- H4 Appaloosa Halter Futurity Weanling Fillies, Non-Pro
- H2 Appaloosa Halter Futurity Weanling Fillies, Open
- H8 Appaloosa Halter Futurity Yearlings (all sexes), Non-Pro
- H3 Appaloosa Halter Futurity Weanling Colts & Geldings, Non-Pro
- H1 Appaloosa Halter Futurity Weanling Colts & Geldings, Open

RE-SET ARENA

		Pre Entry	Equip/ Cattle	Optional NSBA
✓O555	Senior Ranch Riding <	145		20
O460	Saddle Seat Pleasure	145		
O393	Men's Heritage	145		
O541	Junior Ranch Reining <	145		
✓N120	Non-Pro Hunter Under Saddle	145		20
O342	Senior Reining	145		
O423	Men's Western Pleasure	145		

CHAMPION^{OF} CHAMPIONS



PERFORMANCE
HORSES

\$2500



*Open to those placing in the top 3
in all open, non-pro, and ApPHA western pleasure classes!*

Western Pleasure



\$2500

*Open to those placing in the top 3
in all open, non-pro, and ApPHA
hunter under saddle classes!*

Hunter Under Saddle

**Jarrell & Kate
Jackson**

\$2500

*Open to first place in open and non-pro weanling, yearling,
two-year-old, three-year-old, aged and broodmares. Winner take all.*

Halter

*100% payback of added money and entry fees.
See page 36 in the premium book for complete rules.*

SPONSORED BY:



PERFORMANCE
HORSES
Erin Greathouse



David & Wendy Jo
McCain

Jarrell & Kate
Jackson

2022 World Championship Appaloosa Show

Tentative Class Schedule cont.

N110	Non-Pro Hunt Seat Equitation	110		
✓O362	Senior Western Riding	145		20

7:30 AM

WILL ROGERS COLISEUM

✓O382	Senior Trail	145	40	20
✓O381	Junior Trail	145	40	20
✓O385	Green Trail	145	40	20

RE-SET ARENA

O270	Keyhole Race	145		
N277	Non-Pro Walk/Trot Keyhole Race	145		
N279	Novice Non-Pro Keyhole Race	110		
N270	Non-Pro Keyhole Race	145		

7:30 AM

W.R. WATT ARENA

C15	ApCHA Ranch Cutting			
C2	ApCHA Three-Year-Old Cutting Futurity, FIRST GO			
C4	ApCHA Five & Six-Year-Old Cutting Classic			
C10	ApCHA Masters Non-Pro Jane Norman Memorial Cutting			
O141	Junior Cutting - ELIMINATIONS	145	185	
O142	Senior Cutting - ELIMINATIONS	145	185	
N380	Non-Pro Cutting - ELIMINATIONS	145	185	
N389	Novice Non-Pro Cutting	105	140	

USCHA Cutting

4:00 PM – 24 hours

At-Will Trail Practice – Multi-Purpose Building

Saturday, October 29

Proudly sponsored by Becky Ruehle Photographix LLC

7:30 AM

JOHN JUSTIN ARENA

		Pre Entry	Equip/ Cattle	Optional NSBA
N513	Non-Pro Weanling Fillies	145		
N514	Non-Pro Yearling Fillies	145		
N515	Non-Pro Two-Year-Old Mares	145		
N516	Non-Pro Three-Year-Old Mares	145		
N517	Non-Pro Aged Mares	145		
✓O017	Hunter in Hand, Four & Older Mares	145		20
✓O019	Hunter in Hand, Four & Older Geldings	145		20
✓O024	Hunter in Hand, Two & Older Stallions	145		20
O542	Senior Ranch Reining <	145		
✓O442	Senior Hunter Under Saddle	145		20
✓O554	Junior Ranch Riding <	145		20
N378	Masters Non-Pro Reining	145		
✓O422	Senior Western Pleasure	145		20
N130	Non-Pro Saddle Seat Pleasure	145		

2022 World Championship Appaloosa Show

Tentative Class Schedule cont.

O343	Hackamore/Snaffle Bit Reining	145
N140	Non-Pro Saddle Seat Equitation	110
O424	Ladies' Western Pleasure	145

7:30 AM

WILL ROGERS COLISEUM

O388	Yearling In-Hand Trail	145	40	
O389	Stallion Service Auction Yearling In-Hand Trail	150	40	
N353	Non-Pro Yearling In-Hand Trail	145	40	
✓N350	Non-Pro Trail	145	40	20
N355	Non-Pro 35 & Over Trail	145	40	
✓N358	Masters Non-Pro Trail	145	40	20
✓N359	Novice Non-Pro Trail	110	40	20
N357	Non-Pro Walk/Trot Trail	145	40	

RE-SET ARENA

O290	Figure Eight Stake Race	145
N297	Non-Pro Walk/Trot Figure 8 Stake Race	145
N299	Novice Non-Pro Figure 8 Stake Race	110
N290	Non-Pro Figure Eight Stake Race	145

7:30 AM

W.R. WATT ARENA

C2	ApCHA Three-Year-Old Cutting Futurity	FINALS
C1	ApCHA Four-Year-Old Cutting Derby	FINALS
O142	Senior Cutting	FINALS
C5	ApCHA Non-Pro Bonanza	
O141	Junior Cutting	FINALS
C7	ApCHA 7 & Up Cutting	
N380	Non-Pro Cutting	FINALS
C3	ApCHA Limited Rider	
	USCHA Cutting	

Sunday, October 30

Proudly sponsored by Maria & Todd Johnson

9:00 AM

JAMES L. & EUNICE WEST SALE ARENA

Cowboy Church

7:30 AM

JOHN JUSTIN ARENA

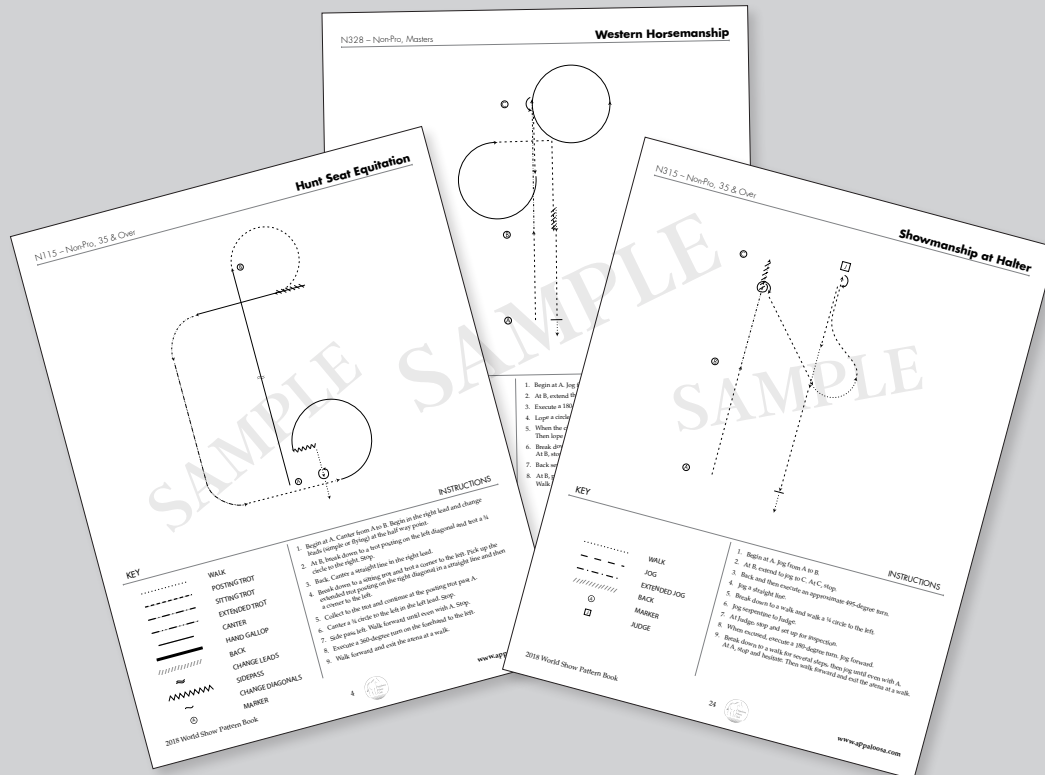
		Pre Entry	Equip/ Cattle	Optional NSBA
N523	Non-Pro Weanling Geldings	145		
N524	Non-Pro Yearling Geldings	145		
N525	Non-Pro Two-Year-Old Geldings	145		
N526	Non-Pro Three-Year-Old Geldings	145		
N527	Non-Pro Aged Geldings	145		
N540	Non-Pro Most Colorful at Halter	145		
N370	Non-Pro Reining	145		

2022



CHAMPIONSHIP APPALOOSA SHOW

RIDE THE PATTERN



THURSDAY, OCTOBER 27

3 – 5 PM

JOHN JUSTIN ARENA

FREE TO SPECTATORS

GET A LEG UP ON THE COMPETITION BY ATTENDING THIS SEMINAR

WHERE A WORLD SHOW JUDGE WILL TALK THROUGH SELECT HORSEMANSHIP, SHOWMANSHIP AND
EQUITATION PATTERNS WITH A DEMO RIDER, OFFERING OPINIONS AND RECOMMENDATIONS FOR PATTERN
IMPROVEMENT.

A BRIEF TIME FOR EXHIBITOR QUESTIONS FOR THE JUDGE MAY BE OFFERED

AT THE CONCLUSION OF THE SEMINAR IF TIME ALLOWS.

WWW.APPALOOSA.COM/WORLD-SHOW

2022 World Championship Appaloosa Show

Tentative Class Schedule cont.

✓O447	Green Hunter Under Saddle	145	20
N310	Non-Pro Showmanship	110	
✓O559	Senior Ranch Rail Pleasure – ELIMINATIONS <	145	20
O394	Ladies' Heritage	145	
✓O559	Senior Ranch Rail Pleasure <	FINALS	
O161	Junior Working Cow Horse	145	70
✓O421	Junior Western Pleasure	145	20
N456	Non-Pro Boxing	145	70

WILL ROGERS COLISEUM

6:00 AM

ApHC Over Fence Paid Practice – Classes 2'6" – 2'9"
 ApHC Over Fence Paid Practice – Classes 2'9" – 3'0"
 ApHC Over Fence Paid Practice – Classes 3'0" – 3'3" / 3'3"+

8:30 AM

O523	Pre-Green Hunter	145	40	
✓N170	Non-Pro Working Hunter	145	40	20
✓O520	Green Hunter	145	40	20
N160	Non-Pro Hunt Seat Equitation Over Fences	110	40	
✓O500	Working Hunter	145	40	20
O528	Windemere Hunter Classic	145	40	
O529	Windemere Hunter Under Saddle Classic	60		

AWARD *Windemere Hunter Classic Top 10*

RE-SET ARENA

O300	Nez Perce Stake Race - ELIMINATIONS	145	
N309	Non-Pro Novice Nez Perce Stake Race – ELIMINATIONS	110	
O300	Nez Perce Stake Race	FINALS	
N309	Non-Pro Novice Nez Perce Stake Race	FINALS	
	<i>Hunter Hack Practice</i>		

7:30 AM

W.R. WATT ARENA

USCHA Cutting

6:00 PM

Hall of Fame Reception

Monday, October 31

Proudly sponsored by France Appaloosas, Home of TELL ME IM HOT

7:30 AM

JOHN JUSTIN ARENA

	Pre Entry	Equip/ Cattle	Optional NSBA
N450	Non-Pro Working Cow Horse	145	70
N503	Non-Pro Weanling Colts	145	
N504	Non-Pro Yearling Colts	145	
N505	Non-Pro Two-Year-Old Stallions	145	
N506	Non-Pro Three-Year-Old Stallions	145	

Appaloosa Pleasure Horse Assoc.

Proudly Presents



ApHC World Show, October 26 - November 5, 2022 – Ft. Worth, TX

Estimated \$30,000. Cash & Prizes

Western Classes

Open Yearling Longe Line Western (\$1,500. Added) - **11/1/22**

Open 2 Year Old Western Pleasure (\$2,500. Added) & *Ltd. Rider Award* - **11/4/22**

Open 3 Year Old Western Pleasure (\$2,500. Added) & *Ltd. Rider Award* - **10/31/22**

Non-Pro/Youth Jr. Western Pleasure 5&Under – (\$1,500. Added) & **Harris Work Saddle** – **11/4/22**

Huntseat Classes

Open Yearling Longe Line Hunter (\$1,500. Added) - **11/3/22**

Open 2 Year Old Hunter Under Saddle (\$2,500. Added) & *Ltd. Rider Award* - **11/3/22**

Open 3 Year Old Hunter Under Saddle (\$2,500. Added) & *Ltd. Rider Award* - **11/1/22**

Non-Pro/Youth Jr. Hunter Under Saddle 5&Under – (\$1,500. Added) & **Harris Work Saddle** – **11/4/22**

Yearling Halter – All Sexes

Open Yearling Halter – All Sexes (\$2,500. Added) & - **10/31/22**

3 Harris Show Halters - Highest Placing Filly, Stallion, Gelding



FOR MORE INFORMATION PLEASE CONTACT

Wilburn Archer
705-930-5134

wilburn@archerbulk.com

Jesslyn Besardi
508-612-4224

appaloosapleasurehorse@gmail.com

Wendy Shuknecht
716-474-4830

appygir1910@gmail.com

2022 World Championship Appaloosa Show

Tentative Class Schedule cont.

N507	Non-Pro Aged Stallions	145		
P015	APPsolute Stakes \$2500 Yearling Halter			
✓O558	Junior Ranch Rail Pleasure <	145		20
O162	Senior Working Cow Horse	145	70	
✓N330	Non-Pro Western Pleasure	145		20
O341	Junior Reining	145		
N320	Non-Pro Western Horsemanship	110		
✓O430	Pleasure Driving	145		20
✓O427	Three-Year-Old Snaffle Bit Western Pleasure	145		20
P043	APPsolute Stakes \$2500 Three-Year-Old Western Pleasure	concurrent with O427		
✓N190	Non-Pro Pleasure Driving	145		20
✓N340	Non-Pro Western Riding	145		20
✓O441	Junior Hunter Under Saddle	145		20
AWARD Champion Non-Pro English Exhibitor				
AWARD Champion Non-Pro Western Exhibitor				
AWARD Champion & Reserve English Horse				

7:30 AM

WILL ROGERS COLISEUM

N318	Masters Non-Pro Showmanship	110		
N315	Non-Pro 35 & Over Showmanship	110		
✓O028	Hunter in Hand, Yearling Fillies	145		20
✓O029	Hunter in Hand, Yearling Geldings	145		20
✓O027	Hunter in Hand, Yearling Colts	145		20
O434	Stallion Service Auction Yearling Longe Line	150		
✓O402	Senior Hunter Hack	145	20	20
N307	Non-Pro Walk/Trot Nez Perce Stake Race	145		
N301	Non-Pro Nez Perce Stake Race – ELIMINATIONS	145		
N301	Non-Pro Nez Perce Stake Race	FINAL		
✓O401	Junior Hunter Hack	145	20	20
✓N150	Non-Pro Hunter Hack	145	20	20
AWARD High-Point Over Fences Horse				
AWARD High-Point Non-Pro Over Fences Horse				

2:00 PM – 4:00 AM

At-Will Ranch Trail Practice – Multi-Purpose Building

W.R. WATT ARENA

CLOSED – Re-set for World Sale

Tuesday, November 1

Proudly sponsored by RU Connected & Zen Elite Equestrian Center

7:30 AM

JOHN JUSTIN ARENA

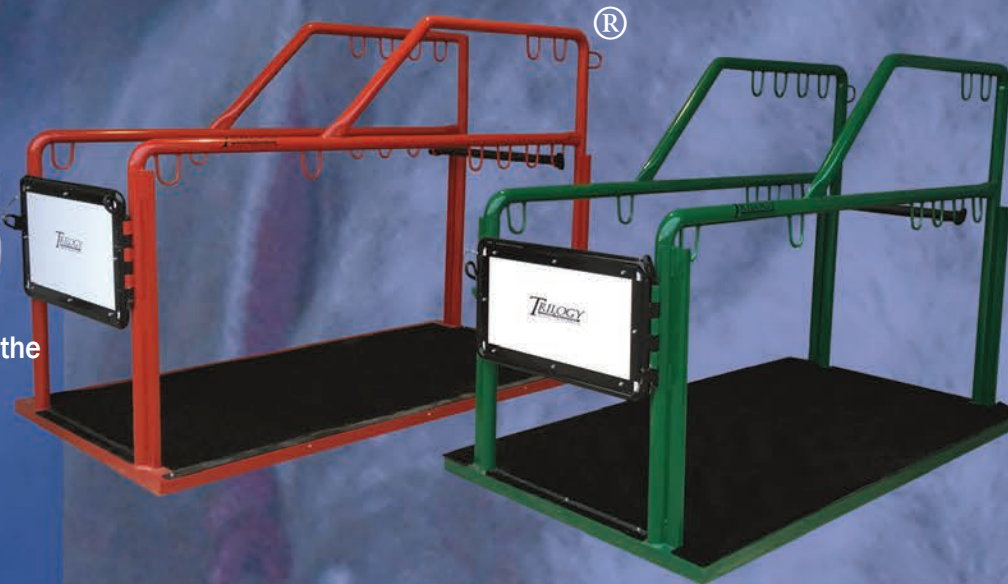
		Pre Entry	Equip/ Cattle	Optional NSBA
✓O557	Senior Ranch Trail <	145	40	20
✓O556	Junior Ranch Trail <	145	40	20
✓N670	Non-Pro Ranch Trail <	145	40	20

Easy Stocks®

The Most Security Possible for Both the Handler and Horse.

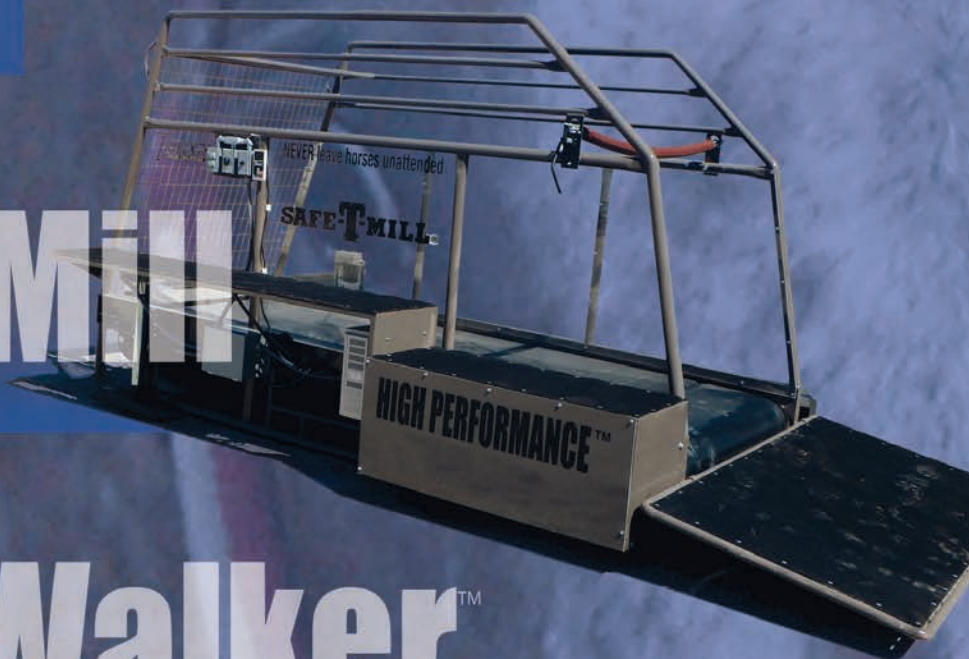
Easy Stocks® can be used for:

- Breeding
- Palpating and Examinations
- Treating Injured Horses
- Giving Vaccinations to Horses
- Washing and Grooming



Safe-T-Mill

Modern Fitting of the Equine Athlete



Easy Walker™



- Heavy Duty Variable-Speed Motor 0-8 MPH
- Barn Mounted Forward-Stop-Reverse and Speed Control Panel
- Low Maintenance
- Quick-Release Safety Cable
- Completely Enclosed Cabinet
- 14' to 20' Arms



405-248-1010 WWW.TRIOLOGYHORSE.COM

AN OWEN FARMS ENTITY



2022 World Championship Appaloosa Show

Tentative Class Schedule cont.

RE-SET ARENA

O552 Open Ranch Horse Conformation 145

AWARD *Champion & Reserve Ranch Horse*

RE-SET ARENA

N440 Non-Pro Breakaway Roping 145 40

O181 Junior Judged Tie-Down Roping 145 40

O182 Senior Judged Tie-Down Roping 145 40

N600 Non-Pro Judged Tie-Down Roping 145 40

O220 Timed Tie-Down Roping – ELIMINATIONS 145 40

N410 Non-Pro Timed Tie-Down Roping – ELIMINATIONS 145 40

O220 Timed Tie-Down Roping FINALS

N410 Non-Pro Timed Tie-Down Roping FINALS

O250 Steer Daubing 145 40

N420 Non-Pro Steer Daubing 145 40

7:30 AM

WILL ROGERS COLISEUM

✓O016 Hunter in Hand, Two & Three Year Old Mares 145 20

✓O018 Hunter in Hand, Two & Three Year Old Geldings 145 20

✓N338 Masters Non-Pro Western Pleasure 145 20

✓O431 Yearling Longeline, Western 145 20

P023 APPsolute Stakes \$1500 Yearling Longeline Western *concurrent with O431*

N328 Masters Non-Pro Western Horsemanship 110

✓O365 Green Western Riding 145 20

N125 Non-Pro 35 & Over Hunter Under Saddle 145

O280 Camas Prairie Stump Race – ELIMINATIONS 145

N289 Non-Pro Novice Camas Prairie Stump Race – ELIMINATIONS 110

O280 Camas Prairie Stump Race FINALS

N289 Non-Pro Novice Camas Prairie Stump Race FINALS

✓O444 Three-Year-Old Snaffle Bit Hunter Under Saddle 145 20

P033 APPsolute Stakes \$2500 Three-Year-Old Hunter Under Saddle *concurrent with O444*

N115 Non-Pro 35 & Over Hunt Seat Equitation 110

6:00 pm

W.R. WATT ARENA

World Sale Preview

Wednesday, November 2

Proudly sponsored by Gerardot Performance Horses

7:30 AM

JOHN JUSTIN ARENA

O231 Junior Judged Heading 145 40

O232 Senior Judged Heading 145 40

N610 Non-Pro Judged Heading 145 40

O236 Junior Judged Heeling 145 40

O237 Senior Judged Heeling 145 40

N620 Non-Pro Judged Heeling 145 40

Pre Equip/ Optional
Entry Cattle NSBA

Thank You Sponsors

Please join the Appaloosa Horse Club
in thanking the many businesses, individuals and
organizations that support our activities, events,
and programs —
all of which are made possible through
our sponsors' generous contributions.



Windemere



KELLY HERD



The Original Designer of
English and Western Jewelry



ARENA WERKS

FOR MORE INFORMATION, VISIT
WWW.APPALOOSA.COM/ASSOCIATION/SPONSORS.HTM
208-882-5578 EXT. 256, MARKETING@APPALOOSA.COM

2022 World Championship Appaloosa Show

Tentative Class Schedule cont.

O240	Heading & Heeling – ELIMINATIONS	145	40
N390	Non-Pro Heading & Heeling – ELIMINATIONS	145	40
O240	Heading & Heeling	FINALS	
N390	Non-Pro Heading & Heeling	FINALS	
RE-SET ARENA			
AWARD <i>Champion & Reserve Cattle Horse</i>			
AWARD <i>Champion Non-Pro Cattle Horse</i>			
N337	Non-Pro Walk/Trot Western Pleasure - ELIMINATIONS	145	
✓O361	Junior Western Riding	145	20
✓N348	Masters Non-Pro Western Riding	145	20
N337	Non-Pro Walk/Trot Western Pleasure	FINALS	
AWARD <i>Champion & Reserve Western Horse</i>			

7:30 AM

WILL ROGERS COLISEUM

N518	Non-Pro Performance Halter Mares	145	
N528	Non-Pro Performance Halter Geldings	145	
N508	Non-Pro Performance Halter Stallions	145	
N319	Novice Non-Pro Showmanship	110	
✓N531	Non-Pro Yearling Longeline, Western	145	20
N287	Non-Pro Walk/Trot Camas Prairie Stump Race	145	
N281	Non-Pro Camas Prairie Stump Race - ELIMINATIONS	145	
N281	Non-Pro Camas Prairie Stump Race	FINALS	
AWARD <i>Champion Non-Pro Games Horse</i>			
R015	ApRRA Three-Year-Old Ranch Riding Futurity		
R008	ApRRA Non-Pro Ranch Riding Derby		

W.R. WATT ARENA

10:00 AM

Patriot Sales & Productions – All-Breed Sale Session

5:00 PM

Patriot Sales & Productions – Appaloosa Sale Session

Thursday, November 3

Proudly sponsored by Shaun & Alicia Fleming

7:30 AM

JOHN JUSTIN ARENA

		Pre Entry	Equip/ Cattle	Optional NSBA
R004	ApRHA Open Derby			
O059	Performance Halter Mares	145		
O053	Weanling Fillies	145		
O054	Yearling Fillies	145		
O055	Two-Year-Old Mares	145		
O056	Three-Year-Old Mares	145		
O057	Aged Mares	145		
O058	Broodmares	145		
O095	Foundation Pedigree Designation Halter Mares	145		

2022

WORLD

CHAMPIONSHIP APPALOOSA SHOW

Sale Preview
November 1, 2022

6 pm

Appaloosa Sale

NOVEMBER 2, 2022 - 5 PM CST BONUS: All Breed Sale at 10am

Watt Arena

FORT WORTH.

Will Rogers Memorial Center, Forth Worth, Texas

All ages! All disciplines!

Catalog Fee: \$300

Cattle Fee: \$100

Commission 8%

No "Pass Out" fees

Online bidding through
Cci.Live.com

All horses to be checked by sale vet

48 hour soundness **GUARANTEE!**

2022 World Championship Appaloosa Show

Tentative Class Schedule cont.

✓O425	Green Western Pleasure	145	20
N360	Non-Pro Bareback Horsemanship	110	
✓N128	Masters Non-Pro Hunter Under Saddle	145	20
R005	ApRHA Non-Pro Reining Derby		
✓N129	Novice Non-Pro Hunter Under Saddle	110	20
✓N660	Non-Pro Ranch Rail Pleasure – ELIMINATIONS <	145	20
N118	Masters Non-Pro Hunt Seat Equitation	110	
✓N660	Non-Pro Ranch Rail Pleasure <	FINALS	
AWARD High-Point & Reserve Masters Non-Pro			
✓O445	Two-Year-Old Snaffle Bit Hunter Under Saddle	145	20
P032	APPSolute Stakes \$2500 Two-Year-Old Hunter Under Saddle	<i>concurrent with O445</i>	
R001	ApRHA Reining Futurity		
N119	Novice Non-Pro Hunt Seat Equitation	110	

7:30 AM

WILL ROGERS COLISEUM

✓N560	Non-Pro Hunter in Hand Mares	145	20
✓N570	Non-Pro Hunter in Hand Geldings	145	20
✓N550	Non-Pro Hunter in Hand Stallions	145	20
✓O432	Yearling Longeline, Hunter	145	20
P022	APPSolute Stakes \$1500 Yearling Longeline Hunter	<i>concurrent with O432</i>	
G1	AGHA Camas Prairie Stump Race - ELIMINATIONS		
G1	AGHA Camas Prairie Stump Race - FINALS		
N327	Non-Pro Walk/Trot Western Horsemanship	110	
AWARD Champion Non-Pro Halter Exhibitor			
AWARD Champion Non-Pro Showmanship/Equitation Exhibitor			

Friday, November 4

Proudly sponsored by Heather Runyon Show Horses & Wagon Road Farm

7:30 AM

JOHN JUSTIN ARENA

		Pre Entry	Equip/ Cattle	Optional NSBA
O078	Performance Halter Geldings	145		
O073	Weanling Geldings	145		
O074	Yearling Geldings	145		
O075	Two-Year-Old Geldings	145		
O076	Three-Year-Old Geldings	145		
O077	Aged Geldings	145		
O096	Foundation Pedigree Designation Halter Geldings	145		
O086	Most Colorful at Halter	145		
N335	Non-Pro 35 & Over Western Pleasure	145		
N690	Non-Pro Ranch Reining <	145		
P037	APPSolute Stakes \$1500 NP/Youth JR Hunter Under Saddle 5 & U			
N650	Non-Pro Ranch Horse Conformation	145		
✓O426	Two-Year-Old Snaffle Bit Western Pleasure	145		20
P042	APPSolute Stakes \$2500 Two-Year-Old Western Pleasure	<i>concurrent with O426</i>		



We're Coming Home

6.27.2023 - 7.5.2023
OKLAHOMA CITY, OK

2022 World Championship Appaloosa Show

Tentative Class Schedule cont.

✓W019	EWD Western Horsemanship, Independent W/J		
✓W020	EWD Western Horsemanship, Independent W/J/L		
AWARD	All-Around Non-Pro		
AWARD	World's Best & Reserve World's Best Appaloosa		
AWARD	High-Point & Reserve Non-Pro		
AWARD	Champion Non-Pro Ranch Horse		
✓P047	APPsolute Stakes \$1500 NP/Youth JR Western Pleasure 5 & Under		
✓W023	EWD Western Horsemanship, Veterans Independent W/J/L		
O600	Rope Race	145	
E011	Beck Farms \$2500 Champion of Champions Hunter Under Saddle	100	
AWARD	Champion & Reserve Games Horse		
✓W022	EWD Western Pleasure, Independent W/J		
✓W021	EWD Western Horsemanship, Veterans Independent W/J		
O345	Freestyle Reining	145	
E010	3G Rockin' MD \$2500 Champion of Champions Western Pleasure	100	

4:00 – 7:00 PM

EXHIBITOR APPRECIATION SOCIAL

7:30 AM

WILL ROGERS COLISEUM

✓N680	Non-Pro Ranch Riding <	145	20
✓N532	Non-Pro Yearling Longeline, Hunter	145	20
G2	AGHA Nez Perce Stake Race – ELIMINATIONS		
G2	AGHA Nez Perce Stake Race – FINALS		

Saturday, November 5

Proudly sponsored by

7:30 AM

JOHN JUSTIN ARENA

	Pre Entry	Equip/ Cattle	Optional NSBA
O035	Performance Halter Stallions	145	
O030	Weanling Colts	145	
O031	Yearling Colts	145	
O032	Two-Year-Old Stallions	145	
O033	Three-Year-Old Stallions	145	
O034	Aged Stallions	145	
O094	Foundation Pedigree Designation Halter Stallions	145	
✓N339	Novice Non-Pro Western Pleasure	110	20
E012	Jarrell & Kate Jackson \$2500 Halter Champion of Champions		
N127	Non-Pro Walk/Trot Hunter Under Saddle	145	
N325	Non-Pro 35 & Over Western Horsemanship	110	
N117	Non-Pro Walk/Trot Hunt Seat Equitation	110	
N329	Novice Non-Pro Western Horsemanship	110	
AWARD	High-Point & Reserve 35 & Over Non-Pro		
AWARD	High-Point & Reserve Novice Non-Pro		
AWARD	High-Point & Reserve Walk/Trot Non-Pro		

2022 World Championship Appaloosa Show

Tentative Class Schedule cont.

AWARD *Overall High-Point Exhibitor*

AWARD *Non-Pro Sportsmanship Award*

AWARD *World Show Leading Breeder*

9:00 AM

W.R. Watt Arena

- ✓W001 EWD Trail, Independent W/J
- ✓W002 EWD Trail, Supported W/J
- ✓W003 EWD Trail, Independent Walk
- ✓W004 EWD Trail, Supported Walk
- ✓W005 EWD Trail, Independent W/J/L
- ✓W006 EWD Trail, Veterans W/J
- ✓W010 EWD Showmanship Level 1 (wheelchair)
- ✓W011 EWD Showmanship Level 2
- ✓W012 EWD Showmanship Level 3
- ✓W015 EWD Horsemanship/Equitation, Veterans Walk (Independent/Supported)
- ✓W016 EWD Western Horsemanship, Supported W/J
- ✓W017 EWD Horsemanship/Equitation Independent Walk
- ✓W018 EWD Horsemanship/Equitation, Supported Walk
- ✓W025 EWD English Equitation, Independent W/T

Thank You!



Saddle Sponsors

World's Best Appaloosa

Sponsored by Windemere Equestrian Center

All-Around Non-Pro

Sponsored by Sue Scobee & Wilburn Archer

High Point Non-Pro

Sponsored by Wagner & Holtmeyer Family