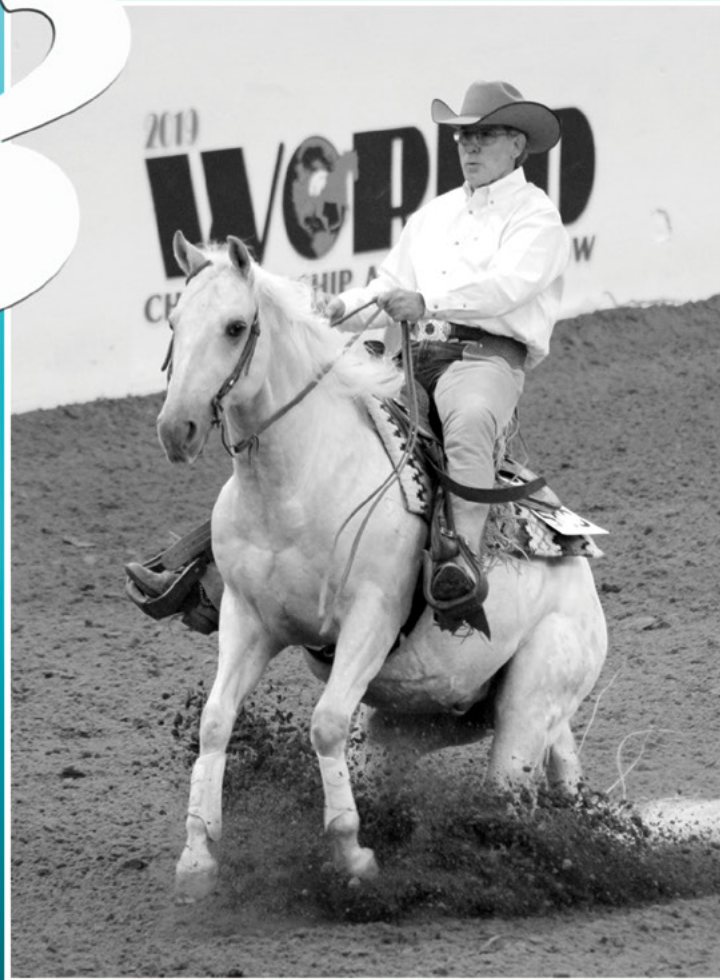


2020

WORLD

CHAMPIONSHIP APPALOOSA SHOW

&



★ 2020 World Championship Appaloosa Youth Show ★



A Brand New World

October 29 – November 8, 2020

**Will Rogers Memorial Center
Fort Worth, Texas**



World Show Deadlines

PRE-ENTRY DEADLINE

October 5, 2020

(for entries submitted in writing using official entry forms)

October 8, 2020

(for entries submitted using the online entry system)

Entries received after these dates will be accepted until 6 p.m. the day prior to the class at post-entry fees.

STALL RESERVATION DEADLINE

October 5, 2020

Reservations received after this deadline will be accepted with late fees.

RV RESERVATION DEADLINE




October 5, 2020

For best pricing and space availability



MONTANA[®]
SILVERSMITHS

www.montanasilversmiths.com

Follow us     



GIFTS FOR HER & HIM

Every Buckle has a Story[™]

TABLE OF CONTENTS

ADMINISTRATIVE CHARGE.....	14	GENERAL RULES & REGULATIONS	10
AWARDS	28	GOLF CARTS.....	15, 26
BARN RULES	21, 22	HEALTH INSPECTION.....	16
BEDDING	26	HERITAGE	38
CERTIFICATE OF REGISTRATION	16	HOTELS	6
CHAMPION OF CHAMPIONS.....	42	INHUMANE TREATMENT	22
CHECK-IN PROCEDURES.....	16	INSPECTION STATION.....	18
CONTACT INFORMATION	43	LAMENESS	22
COMMERCIAL EXHIBIT INFORMATION	28	NSBA DUAL-APPROVED CLASSES	40
COVID-19 PROTOCOLS/PROCEDURES	12	OFFICIAL VETERINARIAN	20, 23
CLASS PATTERNS.....	20	OWNERSHIP & MEMBERSHIP.....	12
CLASS PROCEDURES	20	Paddock PROCEDURE	20
DISQUALIFICATION	20	PARKING	26
DOGS/PETS	21	PAYMENT PROCEDURES	14
DRUG TESTING	18	RECREATIONAL VEHICLES.....	28
EQUIPMENT JUDGE.....	22	SCRATCHES/REFUNDS	18
ELIGIBILITY	12	SHOW OFFICE	16
ELIMINATION, FINALS AND SCORING	28	SHOW OFFICIALS.....	44
ENTRIES	14	STALLION SERVICE AUCTION INCENTIVE CLASSES	42
ENTRY AGREEMENT	10	STALL RESERVATIONS.....	22
EVENT PROGRAM.....	28	SUBSTITUTIONS	18
EXHIBITOR NUMBERS	16	TEAM ROPING.....	40
FARRIER	28	WINDEMERE HUNTER CLASSIC.....	40
FEED	26	WORKING ORDER	20
FORFEITURE OF STALL LOCATION.....	26	YEARLING LONGE LINE	40
FREESTYLE REINING	38		



WE CARRY THE
**BEST FITTING,
WARMEST
BLANKETS**
FOR THE WINTER!

**SHOP ONLINE
@SSTACK.COM**

FREE SHIPPING
ON ORDERS OVER \$100!

SCHNEIDERS
Value Priced Horse Supplies Since 1948

800-365-1311

NEED a place to stay?

These hotels are waiting to serve participants and spectators!

PREFERRED ACCOMMODATIONS

Fort Worth, Texas

COURTYARD FORT WORTH UNIVERSITY DRIVE

3150 Riverfront Drive

(800) 321-2211 or (817) 335-1300

- Less than 5 minutes from Will Rogers Complex
- Complimentary "Grab & Go" breakfast
- Pool
- Free high-speed internet access
- Spacious complimentary parking

\$102/NIGHT PLUS APPLICABLE TAXES

Reserve by 10/9/20

HOLIDAY INN EXPRESS & SUITES

1111 W Lancaster Avenue

(817) 698-9595 or (866) 551-9747

- Less than 5 minutes from Will Rogers Complex
- Indoor pool
- Free high-speed internet access
- Complimentary "Grab & Go" breakfast
- Complimentary shuttle transportation (3-mile radius)
- Complimentary parking

\$99/NIGHT PLUS APPLICABLE TAXES (KING)

\$104/NIGHT PLUS APPLICABLE TAXES (2 QUEENS)

Reserve by 10/9/20

HOME2 SUITES BY HILTON

Fort Worth Cultural District • 1145 University Drive

(682) 707-9475

- Across the Street from Will Rogers Memorial Center!
- Fully furnished kitchen
- Complimentary "Grab & Go" breakfast
- Free parking & Wi-Fi
- Pet Friendly, On-site laundry

\$109/NIGHT PLUS APPLICABLE TAXES

(1 QUEEN STUDIO SUITE)

\$129/NIGHT PLUS APPLICABLE TAXES

(2 QUEEN STUDIO SUITE)

Reserve by 10/15/20

SPRINGHILL SUITES MARRIOTT

3250 Lovell Avenue

(888) 287-9400

- Less than 5 minutes from Will Rogers Complex
- Complimentary "Grab & Go" breakfast
- Free high-speed internet access
- Complimentary parking

\$102/NIGHT PLUS APPLICABLE TAXES

Reserve by 10/9/20

FORT WORTH FAIRFIELD INN & SUITES

1505 South University Drive

(817) 335-2000

- Less than five minutes from WRMC
- Within walking distance of more than 15 restaurants
- Complimentary deluxe hot breakfast
- Guest Laundry
- Free internet, exercise room, indoor pool, Jacuzzi

\$99/NIGHT PLUS APPLICABLE TAXES

Reserve by 10/12/20

TOWNEPLACE SUITES UNIVERSITY MEDICAL CENTER

3450 W. Vickery Blvd.

(817) 632-0800

- Fully furnished kitchen
- Complimentary "grab and go" breakfast
- Outdoor heated pool
- 5 minutes from Will Rogers Complex
- Free Wi-Fi

\$95/NIGHT PLUS APPLICABLE TAXES (KING or 2 QUEEN)

\$105/NIGHT PLUS APPLICABLE TAXES (ONE BEDROOM SUITE)

Reserve by 10/5/20



#ELITESTRONG

GOOD LUCK EXHIBITORS!

WORLD'S
BEST
APPALOOSA

ApHC

Official Saddle Partner

Saddles & Tack | Awards | Leather Goods & More!



Put Your Seat in an Elite!

Handmade for Horsemen by Horsemen.

Design: www.silverbuckservices.com © 2020, photo courtesy Elite Custom Saddles



Bee Branch, Arkansas!

Jon: (501) 912-9262

MrEliteSaddles@aol.com

EliteCustomSaddles.com

Personal Safety & Security Reminders



The ApHC wants to remind everyone to have a safe and enjoyable show.

Many of you will be traveling long distances through unfamiliar places, and it pays to think ahead. The following are things that you may already know, but now is a great time to read over them again and discuss safety with your family. It is also a great time to check the security measures you use to protect your belongings. Do what you can now to make yourself and your family an unattractive target to thieves and criminals.

Be aware of your surroundings. If something doesn't look or feel right, trust your instincts.

Park and walk only in well-lit areas. Travel in pairs, especially at night.

Children should be with a responsible adult at all times.

Look for a hotel with 24-hour on-site security.

Don't carry large amounts of cash. Think about replaceable travelers' checks or debit cards with fraud protection instead. Keep a list of credit card and bank contact numbers in a separate place that you can use to cancel cards or accounts if necessary. Have a back up plan in case your purse or wallet is stolen.

Purses, wallets, GPS devices, briefcases, bags, laptop computers or anything that looks valuable should never be left in a vehicle or unattended area.

Spare wheels, tires and even whole trailers can be targeted by thieves. Locking the hitch on your trailer and the spare on your truck will make you a less attractive target.

Lock your tack stall. Even if you're only going around the corner or into another stall, always lock up.

Label your cell phone, camera, cases, tack carriers, etc.
Found items are returned more quickly if the owner can be easily identified.

If you can, leave your dogs at home. If you bring a dog, keep them on a leash or penned up. Please make sure they are wearing tags with a local or cell number where you can be reached.

Put a label on your horse's stall with your cell, hotel, and local contact information so that you can be reached in the case of a horse emergency.

If you see a horse in distress and the owner is not around, contact the show office or the stall office. The Stall Office is open 24 hours a day.

Thank You Sponsors

Please join the Appaloosa Horse Club in thanking the many businesses, individuals and organizations that support our activities, events, and programs — all of which are made possible through our sponsors' generous contributions.



ARENA WERKS

Larry Williams
© PHOTOGRAPHY



KELLY HERD



The Original Designer of English and Western Jewelry



Windemere

For more information, visit

www.appaloosa.com/association/sponsors.htm
208-882-5578 ext. 256, marketing@appaloosa.com

GENERAL RULES & REGULATIONS

The World Show will be run in compliance with the 2020 *Official Handbook of the Appaloosa Horse Club*, except as otherwise stated in the following pages.

The management reserves the right to decline any entry before or during the show without liability for compensation for reasons such as non-sufficient fund checks, stopped payment on checks, poor sportsmanship, inhumane treatment of horses, or harassment of judges, officials, secretaries, ring stewards and/or any other employee of the show.

The show management reserves the right to change the show schedule at any time.

All horses entered in the show must be registered with the ApHC, be eligible to compete and must purchase a stall.

All horses not officially entered in the show and assisting in, but not limited to, cutting or team roping must be registered with the ApHC and must purchase a stall.

All horses on the show grounds must purchase a stall and must show current health papers and proof of negative Coggins in the show office. See HEALTH INSPECTION for additional details.

Exhibitors will be disqualified for using a horse to assist in any class that is not registered with the ApHC or using a horse with a N (non-characteristic) Certificate of Registration and which horse has not been issued a performance permit.

All entrants must provide information on lodging accommodations in Fort Worth at the time entries are made in order to pick up packets in the show office. Please see SHOW OFFICE for more details.

ENTRY AGREEMENT

Release, Assumption of Risk, Waiver and Indemnification

This statement waives important legal rights. Read it carefully before signing any entry forms and/or before participating in any class as an owner and any of his/her representatives, authorized agent, trainer, lessee, rider, driver and/or handler.

I AGREE in consideration for my participation in the World Championship Appaloosa Show and/or World Championship Appaloosa Youth Show ("Competition") to the following:

I AGREE that I choose to participate voluntarily in the Competition with my horse(s), as a rider, driver, handler, lessee, owner, agent, coach, trainer, or as parent or guardian of a youth exhibitor. I am fully aware and acknowledge that horse sports and the Competition involve inherent dangerous risks of accident, loss, and serious bodily injury including but not limited to broken bones, head injuries, trauma, pain, suffering, or death ("Harm").

I AGREE to release the Appaloosa Horse Club, ("ApHC"), the Competition, officials, officers, directors, employees, specialty associations, independent contractors, agents, personnel, volunteers, the Will Rogers Memorial Center, the Fort Worth Convention & Visitors Bureau, the City of Fort Worth, EMTs, trade show vendors, sponsors and/or other sponsoring organizations if any, (collectively the "Released Parties"), from all claims for money damages or otherwise for any Harm to me, my horse(s) and/or my property and for any Harm caused by me, my horse(s) and/or my property to others, even if the Harm resulted, directly or indirectly, from the negligence of the Appaloosa Horse Club, any of the Released Parties and/or the Competition.

I AGREE to assume all liability and responsibility for any accidents, injury or damages sustained or caused by myself, my helpers, my stock or my equipment and I AGREE to expressly assume all risks of Harm to me or my horse(s), including Harm resulting from the negligence of the ApHC, the Released Parties or the Competition.

I AGREE to indemnify (that is, to pay any losses, damages, or costs

incurred by) the ApHC, the Released Parties and the Competition and to hold them harmless with respect to claims for Harm to me or my horse(s), and for the claims, demands, cause of accident, cost of charges and expenses of every kind and nature which may be incurred by reason of any accident, injury, or damage to person or property caused by ownerships, exhibition, or custody or control of any animal exhibited, made by others for any Harm caused by me, my horse(s) and/ or my property at the Competition.

I have read the Appaloosa Horse Club rules about protective equipment, including protective headgear, and I understand that I am entitled to wear protective equipment without penalty, and I acknowledge that the Appaloosa Horse Club strongly encourages me to do so while WARNING that no protective equipment can guard against all injuries. I further understand that any minor child entered in the Competition is required to wear protective headgear during games classes.

I AGREE that participation includes possible exposure to illness from infectious diseases including but not limited to COVID-19. While particular rules and personal discipline may reduce this risk, the risk of serious illness and death does exist. I knowingly and freely assume all such risks related to illness and infectious diseases, such as COVID-19, even if arising from the negligence or fault of the ApHC, the Released Parties and/or the Competition; and I hereby knowingly assume the risk of injury, harm and loss associated with the Competition, including any injury, harm and loss caused by the negligence, fault or conduct of any kind on the part of the ApHC, the Released Parties and/or the Competition.

I AGREE to hereby release and forever discharge the ApHC, the Released Parties and/or the Competition from any claim whatsoever which arises or may hereafter arise on account of any first aid, treatment, or service rendered in connection with my participation in the Competition.

I AGREE to furnish all health documents required by the Competition for each horse entered, upon request of the show management and understand that any horse that develops a contagious disease during the show will be immediately quarantined and/or removed from the grounds under the instructions of the Show Veterinarian or State Veterinarian.

I AGREE that the ApHC has the sole right to control, sell, rent, supervise or give away (or to assign others the right to do so) the exclusive rights to photograph, broadcast, televise, reproduce, transmit and disseminate all or part of this event. I authorize the ApHC to make use of any photographs, films or video taken of the horses and exhibitors entered, while on the grounds or in transit between the stabling facility and the event site, in any way they see fit in the promotion of the Competition or the ApHC. No such advertising or promotional rights shall include the right to use a participant's name or likeness in a manner that implies endorsement of any company, product category or service.

If I am a parent or guardian of a youth exhibitor, I consent to the child's participation and AGREE to all of the above provisions and AGREE to assume all of the obligations of this Release on the child's behalf.

I AGREE that the "ApHC" and "Competition" as used above includes all of the officials, officers, directors, employees, agents, personnel, volunteers and affiliated organizations.

I represent that I have the requisite training, coaching and abilities to safely compete in this competition.

By signing the entry blank, I AGREE to be bound by all applicable Appaloosa Horse Club rules and all terms and provisions of the ENTRY AGREEMENT. In the event of failure to sign an entry form, the first entry in a class will be deemed acceptance of said rules.

State Line Tack is proud to sponsor the Appaloosa Horse Club

Good luck at the 2020 World Show!



Shop statelinetack.com/appy for everything you and your Appaloosa need.



STATE LINE TACK®

We make riding affordable.

www.statelinetack.com | 844.384.6814

COVID-19 PROTOCOLS/PROCEDURES

Protocols have been established by the Will Rogers Memorial Center, the State of Texas and the Appaloosa Horse Club to help safeguard attendees while at the event. There are vulnerable individuals among us and because of the hidden nature of the virus, we ask all attendees to rigorously follow regulations specified herein to protect competitors, staff, judges and spectators.

Please carefully read the following and arrive at the grounds prepared.

Updates and/or changes (if any) will be provided to exhibitors closer to the show and will be sent via email. **Please be sure you have a valid email address on file with ApHC to ensure receipt of this information. You can do so by logging into your member portal and updating that information at www.appaloosa.com.**

Face Coverings are required while on grounds at all time except when horseback. Contestants choosing to wear face coverings while exhibiting in the show will not be penalized.

Hand Sanitizer stations are located throughout the facility, barns and arenas. You are encouraged to use them frequently. You are also encouraged to have a personal supply in your vehicle and at your stalls.

Hand Washing Please frequently wash your hands with soap for a minimum of 20 seconds several times each day.

Temperature Monitoring Facility and ApHC staff/crew/officials will daily self-monitor temperatures prior to arrival on grounds. Those with a morning temperature higher than 100.4 will not be on the grounds. Exhibitors and spectators are asked to self-monitor temperatures as well. If you have a temperature of higher than 100.4, please do NOT come to the show grounds and if staying on site in the RV park, please self-quarantine until you no longer have a temperature for 24 hours without the aid of fever-reducing medications. WRMC personnel have been given clear training on how to respond appropriately to all presumed cases of COVID-19 and to all verified cases of COVID-19 for which that person was on the WRMC grounds.

Self Screening for symptoms. Anyone (staff, participants) experiencing symptoms of COVID-19 should not enter the facility and is encouraged to seek medical attention. Symptoms include cough, shortness of breath or difficulty breathing, chills, repeated shaking with chills, muscle pain, headache, sore throat, loss of taste or smell, diarrhea, temperature over 100.4 degrees Fahrenheit or known close contact with a person who is confirmed to have COVID-19.

Social Distancing in combination with face coverings is the primary defense against the spread of COVID-19. The following procedures are in place to adhere to WRMC and CDC guidelines.

- All post entries, scratches, vet scratches, rider/horse changes, order-of-go requests and stall purchases must be done using the ApHC on-line entry system which has been adapted for this process. Open checks will not be maintained during the show as all transactions shall take place online and any additional class post-entries must be paid for at the time they are added. Regular deadlines apply.
- Copies of all health papers including 30-day health, 12-month proof of negative Coggins and the Certificate of Registration for every horse entered should be emailed in advance of arrival on grounds to worldshow@appaloosa.com.
- Orders of Go will be posted at paddocks but will also be available online. Please utilize the online updates to avoid gathering at paddocks.
- Maintain 6' of separation when in lines at offices, wash racks, concession stands etc.
- Arena and café seating is limited to 50% of capacity (currently). You may sit in groups with family members but please main-

tain physical distancing between groups or other individuals.

- Barn aisle decorations/seating should be limited to discourage gatherings.
- Stabling shall be adjusted to provide for space between unrelated groups within the same stall aisle.
- Follow traffic flow signs if displayed at event, particularly when entering/exiting buildings, arena seating, offices and within the trade show.
- Socials and barn socials are prohibited at this time.

Arena/Paddock Procedures related to Physical Distancing

- Animals should be spaced a minimum of 6' apart when lining up at the conclusion of classes and when on the rail awaiting class results.
- When exhibiting horses in-hand (halter, showmanship, hunter in hand, longeline), horses should be spaced a minimum of 12' apart to allow for judges to inspect horses and maintain social distancing space.
- Showmanship exhibitors shall stop and set up for inspection at least 6' away from the Judge. This will be designated in all showmanship patterns.
- Paddocks are limited to the horse/exhibitor in the next class and one trainer/coach/parent per exhibitor.
- Walking courses in trail and over fence classes will be conducted in small groups.
- Trail and ranch trail patterns will not include obstacles that will be touched by multiple exhibitors. In ranch trail, exhibitors may be required to provide their own equipment for the purpose of some obstacles. This information will be included in published patterns.

ELIGIBILITY

Qualifying requirements for the 2020 World Show have been waived.

NON-QUALIFYING CLASSES

All open, non-pro and youth classes at the 2020 World Championship Show and Youth World Show are non-qualifying.

OWNERSHIP & MEMBERSHIP

Any horse exhibited at the show must be registered in the owner's name at the time of showing and must be entered as such.

All owners and exhibitors of horses being exhibited at the show must be current members in good standing with the ApHC. If purchase of an ApHC membership is necessary, membership fees MUST accompany the entries or memberships can be purchased online at www.appaloosa.com. An ApHC membership application is available at www.appaloosa.com. Youth may obtain a youth membership to fulfill the ApHC membership requirement. Exhibitors and owners in open and nonpro classes must also be members of an ApHC regional club and may be required to show proof of such membership.

Youth members are not required to be a member of an ApHC regional club to compete in youth classes at the Youth World Show. This requirement was waived by the ApHC Board of Directors for youth exhibitors competing in youth classes only.

In order to compete in non-pro classes, the non-pro or member of their immediate family (per rule 900.J) must own or co-own the horse as evidenced by ApHC records prior to the first day of the show. Therefore, all transfers must be completed by the close of business on October 28, 2020. The competing non-pro must be a current ApHC member, enrolled in the non-pro program and must meet all eligibility requirements as stipulated in the *Official Handbook* of the

TWIN CITIES SOUTH TRAILERS



The Official Trailer and Dealer of **THE APPALOOSA HORSE CLUB**

ACRES OF NEW and PRE-OWNED TRAILERS!



LOOKING
FORWARD
TO THE
WORLD
SHOW!

WE PROMISE YOU WILL SAVE BIG! WE NEED CLEAN TRADES!
Long term, low fixed-rate financing too!

Twin Cities South Trailers is a long-time supporter of the AppHC. When it's time for your new or used trailer, please see us first. You'll be glad you did!



Safe. Secure. Smart.

Gary and Tammy Raak
8448 HWY 377 • Pilot Point, TX • (855) 585-6548
TwinCitiesSouthTrailers.com

ApHC. **Unrelated non-pros may not show the same horse in non-pro division classes at the World or National Championship Appaloosa Shows.**

In order to compete in youth classes, the youth or member of their immediate family (per rule 801.A.1) must own or co-own the horse as evidenced by ApHC records prior to the first day of the show. Therefore, all transfers must be completed by the close of business on October 28, 2020. The competing youth must be a current AYA member and must meet all eligibility requirements as stipulated in the *Official Handbook* of the ApHC. **Unrelated youths may not show the same horse in youth division classes at the World Championship Youth Show.**

NOTE: The original Certificate of Registration for each horse must be presented at the show.

ENTRIES

Pre-entries must be submitted electronically via the ApHC on-line entry program or in writing. If submitted in writing, entries must be made on printed entry forms furnished by the ApHC (copies of printed forms accepted), signed by the proper parties and accompanied by all entry fees, equipment charges, cattle charges and a completed W-9 form for the first listed owner on the Certificate of Registration. Entries will not be accepted by telephone.

Exhibitors are responsible for any errors on their entry forms. Entries lacking sufficient information or not accompanied by all required fees will not be accepted.

Changes to entries must be submitted in writing. Changes to entries will not be accepted by telephone. The ApHC is not responsible for lost or late entries or for entries faxed or emailed. **The ApHC recommends using the online entry system or certified/registered mail as these options provide confirmation that your entries were received.** Exhibitors are responsible for ensuring that faxed entries are received by the ApHC.

The IRS requires the ApHC to obtain the correct taxpayer identification number (TIN) for persons for whom we have to file an information return (i.e. 1099 Miscellaneous for premium payback). This form must be completed by the owner or in the case of multiple owners, by the first listed current owner. If the correct TIN is not provided, subsequent payments can be subject to backup withholding per IRS regulations. **Premium checks and/or award checks will not be issued until the ApHC has a W-9 on file for all persons receiving these checks.** You are required to complete a W-9 with the appropriate certifications and submit it with your entry. This information must be provided to the ApHC regardless of the age of the owner. Your exhibitor packet will be held if this form is not submitted with your entry. A W-9 form is available on the ApHC web site.

The social security number listed on the W-9 should be that of the owner, or in the case of multiple owners, that of the first listed current owner on the Certificate of Registration. No other social security number is acceptable. International residents must complete IRS Form #W-8ECI or the ApHC must deduct 30% of any monies earned.

Social security numbers must be provided for individuals. Taxpayer identification numbers will not be accepted in lieu of a social security number for individual owners. This information must be provided to the ApHC regardless of the age of the owner.

Entries sent by Federal Express, UPS, certified mail, return receipt or Express mail should be mailed to:

Appaloosa Horse Club

World Show

2720 W Pullman Road

Moscow, Idaho 83843

Entries may be faxed to (208) 882-8150.

Exhibitors are responsible for verifying that their entries have been received in the ApHC office. If you fax entries or stall reservations, DO NOT send originals in the mail as this will likely result in duplicate charges if paying by credit card. If you fax entries or stall reservations, please allow four (4) hours of processing time before calling the ApHC to determine if your entries and/or stall reservations have been received. **Faxed copies of checks are not considered payment and entries and/or stall reservations will not be accepted until actual payment is received.** Appaloosa Horse Club switchboard hours are Monday through Friday, 8 a.m. – 4 p.m. PT.

Declined credit cards may result in you paying post-entry prices. If you are using a debit or credit card, please pre-authorize amounts over \$200 (or amounts in excess of your daily limit) with the card company or your bank to avoid processing delays and late fees. *ApHC does not accept American Express as a form of payment.*

PRE-ENTRY DEADLINE

October 5 (entries submitted in writing using official entry forms must be received in the ApHC office by this date)

October 8 (entries submitted using the online entry system must be entered and paid for online by 11:59 p.m. PT)

All entries must be in the ApHC office by the appropriate pre-entry deadline listed above in order to receive pre-entry prices and to be included in the Official Program. No supplement will be printed.

Entries will be accepted after this date/time with **a post-entry fee of \$35 for youth classes, \$50 for non-pro classes and \$60 for open classes.** NO EXCEPTIONS WILL BE MADE. Post-entry fees are not assessed for NSBA entries, equipment charges or cattle fees in working cow horse, boxing or roping. Post entry fees WILL BE assessed to cattle fees in cutting classes. Post entries must be made by 6:00 p.m. the day prior to when the class to be entered is scheduled. **After the pre-entry deadline, post entries can be made at post-entry prices and MUST be purchased using the on-line entry system by 6 p.m. the day prior to the day the class is scheduled. No post entries will be accepted after this time. Hard copy post entries will not be accepted in the Show Office at the show.**

Hardcopy entries not received in the ApHC office by October 5 must be submitted using the online entry system. The World Show program will list all entries that were received in the ApHC office by the published pre-entry deadlines.

ADMINISTRATIVE CHARGE

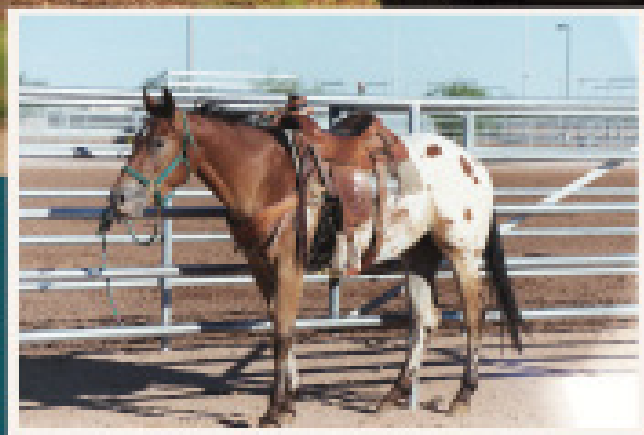
There will be a \$50 one-time administrative charge, which includes drug-testing charges for each horse entered in the World Show. This fee is assessed only one time per horse regardless of the number of classes in which the horse is entered. For example, if a horse is entered in non-pro and open classes, only \$50 is due. For further clarification, see DRUG TESTING.

PAYMENT PROCEDURES

All entries must be made payable to the ApHC in U.S. funds drawn on a U.S. bank. Payment may be made in the form of personal checks, Visa, MasterCard, Discover or money order. The ApHC does not accept American Express as a form of payment. A 3% surcharge will be added to all credit and debit card charges.

If you are paying by debit or credit card, you are advised to contact your bank or credit card issuer in advance about charges in excess of \$200 (or your bank card daily limit) to avoid the charge being declined for security reasons. **Cards declined by the bank will be treated as insufficient funds and may result in your horse being excluded from the program and/or late stall penalties or post**

Metro Golf Cars



Golf Car Rentals Available

Pre-Order ahead of time for discounted rates!

Email Johnny at johnny@metrogolfcars.com
4063 South Freeway, Fort Worth, Texas 76110

817-921-5491
www.metrogolfcars.com

entry fees being assessed.

Any check returned to the ApHC office due to insufficient funds will require certified funds and payment of a returned check charge in order for entries to be processed. If the customer has not paid all charges for returned checks prior to the World Show, the agent/owner must bring certified funds to the show office for the entries to be processed.

The ApHC shall collect funds for entry and/or stall fees in which a credit card was declined or in which a check has been returned due to insufficient funds before processing entries or stall reservations.

The date at which funds are secured for declined credit cards or insufficient funds checks will be acknowledged as the date the entries and/or stalls are received and processed. Post-entry fees and late stall charges may be assessed to entries for which funds have been declined and which have not been cleared prior to the pre-entry deadline.

SHOW OFFICE

The show office is located adjacent to the John Justin Arena. The show office will be open October 28 from 8 a.m. to 6 p.m. and daily thereafter from 7 a.m. until the last ApHC class enters the arena for judging or until 9:00 p.m. (whichever is earlier). The show office will not close before 6:00 p.m.

Post entries must be made by 6 p.m. the day prior to when the class is scheduled to be held – NO EXCEPTIONS. **Post entries must be done using the online entry system.**

Class scratches, exhibitor changes in open classes and horse changes in non-pro and youth classes must be submitted using the online fillable form and emailed to worldshow@appaloosa.com. All published deadlines apply to these changes.

The show office will NOT cash any checks. Third party checks will not be accepted.

See SUBSTITUTIONS and SCRATCHES/REFUNDS for further information.

CHECK-IN PROCEDURES

PLEASE BE RESPONSIBLE EQUINE INDUSTRY STEWARDS AND ADHERE TO THESE GUIDELINES FOR THE SAFETY AND WELL-BEING OF ALL THOSE IN ATTENDANCE AT THE SHOW.

Please refer to the following check-list to help you get your horse checked in, safely stalled and ready to show.

1. **Email a copy of the front/back of your horse's original Certificate of Registration, health certificate and proof of negative Coggins to worldshow@appaloosa.com by October 20 to expedite unloading and check-in processes at the show.**
2. Upon arrival, check in at the stall office (**signs will be posted at location**) – provide stall office personnel with the registered name of your horse(s) and the name of the person listed as "stalled with" on the stall reservation form you originally submitted. Stall personnel will give you a stall ledger listing your stall number(s) and give you directions to your stalls. **If you purchase a stall at the show it must be paid for at the time the request is made – stalls will not be unlocked until payment is made.** Late stalls must be purchased using the online entry system. If you have received a confirmation letter in which a horse is listed as "not stalled", it will be necessary to purchase or confirm the purchase of a stall for the horse in the show office when picking up your exhibitor packet.
3. Check into the show office (Richardson/Bass Building) – To pick up your exhibitor packet that includes the exhibitor numbers, you must have provided the documents below by email to worldshow@appaloosa.com:
 - a. Certificate of Registration and

- b. Current (within 30 days) health certificate dated on or after September 29, 2020 and
- c. Current (within 12 months) proof of negative Coggins signed by a licensed veterinarian dated on or after October 29, 2019.

Additionally –

- d. If your horse is listed as "not stalled" on your confirmation letter, you must provide proof of stall purchase when picking up your exhibitor number.
 - e. Completed proof of accommodations form if not previously submitted.
4. Check your horse through the Inspection Station (Burnett Building). Take your horse, your horse's **ORIGINAL** Certificate of Registration and the horse's exhibitor numbers to the inspection station. All horses entered in the show must be inspected against their **ORIGINAL** papers and have the inspector place a stamp on the exhibitor numbers for that horse prior to being allowed entry into any class.

CERTIFICATE OF REGISTRATION

Original Certificates of Registration must be presented to the Inspection Station prior to showing. **PHOTOCOPIES WILL NOT BE ACCEPTED!**

It is not the responsibility of the ApHC to provide original Certificates of Registration. You must pick up your exhibitor packet before going to the inspection station.

Horses that have not been inspected by the Official Inspector will not be allowed to show.

HEALTH INSPECTION

All horses (including weanlings) must be accompanied by a current 30 day health certificate (dated on or after September 29, 2020) as well as a current, within 12 months, proof of negative Coggins (dated on or after October 29, 2019), and administered by a licensed accredited veterinarian showing positive identification of the horse, the horse's temperature and the name and address of the laboratory performing the tests. **These documents should be emailed to worldshow@appaloosa.com by October 20 to expedite unloading at the show and picking up your exhibitor packets at the show office.**

If Coggins and health papers are not available, the horse will not be allowed to unload on the grounds or shall be required to quarantine on grounds until these documents are received. Horses will not be allowed to compete until documents are received. **Make sure the veterinarian uses registered names on Coggins and health certificates rather than "barn names."**

Exhibitor packets containing exhibitor numbers will not be released until all appropriate documents have been received.

All horses are subject to inspection by the show veterinarian or State Veterinarian if suspected of harboring a communicable disease. All horses must be serviceably sound.

The attending show veterinarian recommends all horses be vaccinated for tetanus, influenza, rhinopneumonitis, EHV-1 and West Nile Virus.

EXHIBITOR NUMBERS

One exhibitor number will be assigned to each horse. This number will be used for all classes in which the horse is entered. If the horse is entered in more than one division (open & non-pro or ApHC & a specialty association class) one exhibitor number will be issued.

In addition to ApHC classes at the World Show, there are various specialty associations conducting classes. In cases in which the horse is already entered in ApHC classes at the World Show, the horse

Windemere

9th Annual

HUNTER
CLASSIC

2020 WORLD CHAMPIONSHIP SHOW



Class awards sponsored by
WINDEMERE EQUESTRIAN CENTER,
JACKSONVILLE, FLORIDA

See Premium Book for class rules and regulations

should be shown in specialty association classes using the exhibitor number issued by the ApHC. In cases in which the horse is not cross-entered in ApHC classes at the show, exhibitors must pay a one-time drug testing fee of \$50/horse and get their exhibitor numbers from the ApHC show office.

To receive an exhibitor number, horses must be entered using the ApHC online entry system. This includes horses that are not registered with ApHC.

All exhibitor numbers for ApHC-registered horses MUST be stamped by the official World Show inspector, **even if not entered in ApHC-sponsored classes.** Please see INSPECTION STATION for complete instructions.

In order to receive a back number, all other show requirements must be fulfilled including presentation of the horse's Certificate of Registration, proof of negative Coggins, health certificate and the horse must be stalled. In addition, the owner and exhibitor must be current ApHC members in good standing and must be members of an ApHC regional club.

Please see HEALTH INSPECTION for information pertaining to required health papers for all horses on the grounds, regardless of whether they are entered in ApHC World Show classes.

After picking up your exhibitor number, you must have your horse inspected. Please see INSPECTION STATION for complete instructions. To ensure that your placings are accurate, it is essential that the correct exhibitor number is used for all classes and displayed in the correct manner (see rule 711.M of the *Official Handbook of the ApHC* for complete rules for each class). Failure by exhibitor to display the correct number and in a visible manner while being judged shall result in disqualification from the class.

SUBSTITUTIONS

If substitution of a horse is necessary in a non-pro or youth class or of an exhibitor in an open class, such changes must be made prior to the class entering the arena. **No exhibitor or horse changes will be accepted at the announcer's stand or paddock.**

No exhibitor changes will be allowed in non-pro or youth classes. No horse changes will be allowed in open classes.

Exhibitor and/or horse changes must be completed on an official form (located on the ApHC World Show web site) and emailed to worldshow@appaloosa.com by the deadline stipulated in this paragraph.

Any horse entering the arena in which the exhibitor is anyone other than the one on record with the ApHC show office and in which an exhibitor change has not been filed with the show office prior to the class entering the arena will be disqualified.

SCRATCHES/REFUNDS

Horses that become sick or injured PRIOR to the start of the show must submit a vet's statement concerning the condition of the horse, the horse's registration name and number and date the sickness or injury occurred. This documentation must be received in the ApHC Show Office PRIOR to that horse's first class for any refund to be considered. As of the first day of the show, only statements from the Official Show Veterinarian, along with an official class scratch form, will be accepted for horses that become sick or injured on the show grounds. All documentation must be in the Show Office PRIOR TO THE CLASS ENTERING THE ARENA. **Properly completed vet scratch form along with a statement from the veterinarian should be emailed to worldshow@appaloosa.com.** Forms/documentation received after the class has entered the arena will not result in any refunds of any kind.

If a horse does not compete in a class in which it is entered and a

vet certificate and official scratch form has NOT been received, the entry fees will be forfeited.

If a horse is disqualified from showing by management or officials or if a horse is entered and not shown, all fees will be forfeited.

Cattle charges are non-refundable unless in cases where horses are vet scratched 15 days prior to the first day of the show (October 14, 2020).

The above-mentioned are the only instances in which refunds will be allowed. At the conclusion of the show and after the completion of a financial review, the class entry fee(s) will be refunded less a \$20 per class office charge.

Absolutely no refunds for administrative/drug testing fees, equipment fees, NSBA fees, ApHCF practice class fees, RV fees, Stallion Service Auction Incentive class fees, credit card surcharge fee or stall fees will be given under any circumstances.

Refund checks, for all entries originally paid by check, will be mailed to exhibitors approximately 30-45 days following the last day of the show. For all entries paid by credit card, refunds will be credited to the original credit card approximately 30-45 days following the last day of the show. No refunds will be made on amounts of \$10 or less.

No refund allowance can be applied to charges while at the show.

INSPECTION STATION

All ApHC-registered horses must report to the inspection station PRIOR to showing in their respective classes, including if only showing in classes conducted at the show by a specialty association.

The horse's original Certificate of Registration and exhibitor number must be presented to the Official Inspector prior to showing. Horses will not be allowed entry into the arena for any class until that horse has passed through the inspection station and that horse's exhibitor number has been stamped by an Official Inspector.

The inspection station will be open from 8 a.m. to 5 p.m. on October 28, and from 7 a.m. to 5 p.m. each day thereafter. **If it is necessary for an inspection to be performed outside of these hours an inspector may be available; however, the exhibitor will be charged \$100 per horse payable at the time of the inspection.** The ApHC suggests you pick up your exhibitor number (contained in your exhibitor packet) in the show office and have your horse inspected as soon as you arrive on the grounds to avoid long lines prior to your class.

The inspector may, at his sole discretion, refuse to allow a horse to participate if the registration of the horse appears invalid or otherwise improperly issued. If an Official Inspector refuses to permit a horse to participate, the owner has the right to appeal such refusal to the appeals committee of the ApHC Board of Directors (see Rule 273 of the *Official Handbook of the Appaloosa Horse Club*).

DRUG TESTING

All horses entered in the show, and/or on the grounds, are subject to drug testing. For complete rules and regulations concerning drug testing procedures, refer to rule 40 of the *Official Handbook of the Appaloosa Horse Club*. The owner, trainer or other responsible party must witness the blood or urine sample collection and sign the forms required by the veterinarian. Failure to do so waives any subsequent objections to the testing process or results. All awards will be issued pending drug test results. If a horse is tested positive for unapproved drugs or unacceptable levels of approved medication, all ribbons, trophies, and other awards must be held in escrow by the ApHC until notification of the disciplinary committee's decision.

Drug tests will be administered at the discretion of the ApHC.

Easy Walker[®]



- Heavy Duty Variable-Speed Motor 0-8 MPH
- Barn Mounted Forward-Stop-Reverse and Speed Control Panel
- Quick-Release Safety Cable
- Completely Enclosed Cabinet
- 14' to 20' Arms



The
Safest Possible
for Both Handler and Horse



Easy Walkers[®] can be used for:

- Exercising • Warm Ups • Cooling Down • Rehabilitation
- Conditioning • Steady, Consistent Rhythm and Speed

Those horses selected for testing must report to the drug testing station immediately following each class or random request. Once blood and urine samples have been collected, the horse may leave the testing stall. Drug testing procedures will be strictly enforced.

OFFICIAL VETERINARIAN

In the event the ApHC designates a properly licensed veterinarian or veterinarians as the official veterinarian(s) or official drug testing veterinarian(s) for an ApHC-approved or sponsored event including, but not limited to, the National Show and World Show, as a service to exhibitors and other persons, and any exhibitor or other person directly or indirectly employs, retains, hires or otherwise utilizes the services, advice and/or expertise of such official show veterinarian(s) or official drug testing veterinarian(s), the ApHC shall not in any manner or to any extent whatsoever be liable or responsible for any action, conduct, decisions or services by such official show veterinarian(s) or official drug testing veterinarian(s). Such exhibitor or other person expressly releases and holds harmless the ApHC from any and all claims, liabilities, losses or actions of any kind arising from or in connection with the exhibitor or other person's employment, retention, hiring or utilization of the services, advice and/or expertise of such official show veterinarian(s) or official drug testing veterinarian(s).

There may be veterinarians other than the ApHC Official Veterinarian on-site, however vet scratches will not be accepted from anyone other than the ApHC Official Veterinarian.

CLASS PROCEDURES

The ApHC has established class procedures to benefit the majority of exhibitors participating, within the limits of available budget, manpower and time.

CLASS PATTERNS

Patterns will be available to download (at no charge) on the ApHC website on October 16. Pattern books will be available in the show office and in the stall office at no charge. Patterns will be posted in the paddocks the day of the class.

DISQUALIFICATION

Any exhibitor, horse or owner disqualified from any class for any reason shall not receive a refund. When disqualification occurs by the show management or judges, the decision is final. In addition to other disqualifications as outlined in the rules and regulations contained in the *Official Handbook of the ApHC*, judges (including equipment judges) shall have the authority to disqualify entries for illegal equipment or attire, inhumane treatment, unsoundness/lameness or the presence of blood on the horse. See rule 30 of the *Official Handbook of the ApHC* for more information.

Exhibitors are not allowed to wear earpieces or to have wireless contact with anyone during the course of a class. Exhibitors in violation of this rule shall be disqualified.

In response to industry developments, the ApHC Board of Directors has agreed that the use of magnetic devices in clothing in showmanship, horsemanship, hunt seat equitation and saddle seat equitation constitutes an unfair advantage for exhibitors and shall not be allowed at ApHC-sponsored shows (Youth World, National Show, World Show). Magnetic devices must be removed prior to competition or the exhibitor shall be disqualified. This show management rule is effective immediately.

The use of belly bands is prohibited anywhere on the show grounds at ApHC-sponsored shows (Youth World, National Show, World Show).

WORKING ORDER

All working orders in elimination and final classes will be decided or drawn by show management in accordance with official ApHC rules. **If you or your horse are entered in back-to-back or concurrent classes and feel that this will cause a time constraint, you must inform the show office by 6 p.m. the day prior to the classes and request a change in the order of go. Adjustments shall only be requested for direct horse or exhibitor conflicts. Scheduling conflicts should be emailed to worldshow@appaloosa.com no later than 6 p.m. the day prior to the known conflict and should include the back number of the horse(s), name of exhibitor(s) and classes in which there is a possible conflict.** No adjustments will be made for trainer's convenience or non-show conflicts – order of go adjustments are made for direct horse and/or exhibitor conflict. If possible, show management will then adjust your working order. If you do not contact the show office prior to 6 p.m. the day before the class in question, we may not be able to accommodate your request. Once working orders or cuts have been posted, changes will not be made unless approved by show management.

PADDOCK PROCEDURE

Only exhibitors and their horses are allowed in the alleyway and holding area. This policy applies for the duration of the class, including eliminations and finals, etc. Once the horse has entered the paddock, only exhibitors entered in the class will be allowed to handle or ride their own horse. *For safety reasons, exceptions may be made to this in over-fence classes when an exhibitor is showing more than one horse in a class. Exceptions must be approved by the paddock manager.*

Grooming is prohibited in these areas including, but not limited to, any type of spraying.

Barn calls are a courtesy and will be made for each class and for all exhibitors entered in each class. Regardless of the circumstances, it is the exhibitor's ultimate responsibility to report to their class on time. Exhibitors must check in with the paddock announcer.

The paddock announcer will call exhibitors to enter the arena in their posted order of go. All horses must be ready and waiting in the make-up arena so they may enter the main arena promptly when called.

In classes in which an order of go has been posted, entries not entering the arena for judging in their posted order of go have missed their class and will not be allowed to enter the arena to compete.

In classes in which a time limit has been given to enter the arena, entries not in the arena at the expiration of that time limit have missed their class and will not be allowed to enter the arena to compete.

Late entries will not be admitted into the arena.

Entrants are not permitted to enter the arena for judging unless the horse has been through the inspection station and the exhibitor numbers have been stamped by an official inspector.

See COVID-19 PROTOCOL/PROCEDURES for additional paddock restrictions.

EQUIPMENT JUDGE

An equipment judge(s) shall be employed by and be a representative of the ApHC. The equipment judge shall be responsible for attire and equipment rule interpretations. (Final interpretations are the responsibility of show management). All bits, tack, appointments and attire shall be checked by the equipment judge prior to the exhibitor entering the arena. Any equipment considered to be inhumane or illegal by the official equipment judge must be removed or entry into the arena will be denied. The equipment judge and/or judges in the arena may disqualify an entry for illegal equipment, improper at-



FACILITY Information

PARKING

Please park vehicles and trailers in marked parking spaces only. Rip Johnson Drive is available for unloading only. Parking is not permitted on Rip Johnson Drive, Burnett/Tandy Drive or Tower Drive at any time. All other trailers must be parked in the trailer parking lot off of Trail Drive. No parking is permitted in any fire lanes. Vehicles blocking fire lanes will be towed at the owner's expense. See parking information on page 26.

SHAVINGS

Exhibitors and contestants are not permitted to bring shavings or other bedding onto the grounds. Will Rogers Memorial Center retains sole rights to shavings sales. Shavings are \$7.00-\$10.00/bag. Shavings are for sale at the WRMC shavings office in the Moncrief Building. Shavings can be purchased at the stall office if the shavings office is closed.

WASHING HORSES

All animals must be washed in designated wash areas. Horses may not be washed on sidewalks, aiseways or in stalls. The State of Texas prohibits wastewater from entering storm drains.

LOADING/UNLOADING AREAS

Unloading is permitted on Rip Johnson Drive and north of the Richardson-Bass Building. At no time is unloading permitted on Tower Drive west of the Burnett Building. Arriving horse trailers will receive a permit from the security station to unload. At the expiration of your designated time limit, trailers must be moved to the designated parking areas.

STALL DECORATIONS

Please limit end-of-aisle decorations to 42" deep and at least a 7' height clearance over aisles for equipment. WRMC asks that a covering, such as plastic, be placed underneath any ground cover or plants. Decorations must be attached using temporary setups, such as wire or plastic ties and removed prior to move-out. The following may NOT be used: Nails, Liquid Nail, Bolts, Screws, Rubber Cement, etc. Any fabric or paper used or draped on stalls must be fire-resistant or treated with fire retardant.

VEHICLES

Any vehicle, including golf carts and scooters, must be operated by a licensed driver. See page 26 for complete guidelines.

PETS

Fort Worth city ordinance provides that pets are allowed in stall areas only and must be secured by a leash or in a stall at all times. They are not permitted inside any building on the property. Please make arrangements in advance for pets to remain in stall areas, RV or other area. Owners assume all liability for pets. Tickets may be issued to participants not adhering to this policy.

RV PARKING

WRMC offers RV spaces in the lot off of Trail Drive with power, water and sewer hook ups. Spaces are available by advanced reservation. There are 104 additional RV spaces north of the Richardson/Bass building, that included a 50 or 30 amp service with sewer. Go to www.appaloosa.com and click on World Show to locate RV reservation form. For best rates, the forms are due by October 5.

"BLUE BOARDS"

WRMC invites exhibitors to post signs, flyers, etc. on the "Blue Boards" posted throughout the facility. Signs posted in other areas will be removed.

DUMPSTERS

Exhibitors are encouraged to take advantage of the large rolling dumpsters throughout the complex. They may be rolled into stall aisles or the parking lot for easier cleaning.

BARN PARTIES

Barn Parties are not authorized at the 2020 World Show due to COVID-19 Regulations.

AISLEWAYS

Aisles may not be blocked with obstructions including, but not limited to, chairs, carts, roping dummies, stall decorations or golf carts.

GOLF CARTS

Please see page 26 for Will Rogers Memorial Center guidelines for golf cart use.

SMOKING

Smoking is not permitted in the barns or stall areas. Fort Worth City ordinance prohibits smoking in any of the Will Rogers Memorial Center buildings. Violators will be prosecuted.

SECURITY

Security will be on the grounds on a 24-hour basis. For your protection, you will be allowed limited access to those streets which run parallel the barn area of the Will Rogers Memorial Center. Despite precautions, no one is immune from crime, so please take the proper care when locking trucks, trailers, tack boxes and tack stalls.

STALL AREA

Refrigerated air units, microwaves and other appliances are prohibited in the stall area.

The Will Rogers Memorial Center is a Non-Smoking Facility

tire, inhumane treatment, unsoundness/lameness or the presence of blood on the horse. See Rule 30 in the *Official Handbook of the ApHC* for complete rules regarding inhumane treatment.

The equipment judge(s) shall have the authority to call for a blood and/or urine test on any horse.

The equipment judge(s) may serve as an alternate show judge at the discretion of show management.

BLOOD DISQUALIFICATION

In all classes and all divisions of classes, judges and/or equipment judges may disqualify horse(s) from the class if fresh blood is found on the mouth and/or body areas of a horse (i.e. including but not limited to the barrel, flanks, belly, sides, shoulders). **Judges and/or equipment judges have the sole authority to determine if the blood found on the horse warrants disqualification from the class and the judge's or judges' decision is final and not subject to protest.**

LAMENESS

Rules regarding lameness are adopted to protect the health of Appaloosas exhibited in ApHC-approved and -sponsored shows. At show management's discretion, either at the beginning and/or upon completion of a class or individual work prior to leaving the arena the horse shall be asked to perform movements/maneuvers on a loose rein or lead to demonstrate soundness. Exhibition in any class of a horse that is lame, as determined by show judges, shall be cause for disqualification. See rule 712 in the *Official Handbook of the ApHC* for complete rules regarding lameness. A judge's decision as to the lameness of a horse is final and not subject to protest.

INHUMANE TREATMENT

The ApHC is committed to the humane and proper treatment of all animals. The welfare of the horse is the primary consideration in all activities. Horses will be treated with kindness, respect and compassion at all times. Owners, exhibitors, trainers and all responsible parties must ensure the health and well being of animals in their care at all times including, but not limited to, handling, transportation, training, treatment and stalling.

Per Rule 30.A.1 of the *Official Handbook of the Appaloosa Horse Club*, no person may treat a horse in an inhumane manner which includes but is not limited to:

- Placing an object in a horse's mouth so as to cause undue discomfort or distress.
- Tying a horse in a manner as to cause undue discomfort or distress including but not limited to in a stall, trailer or when longeing or riding.
- Letting blood from a horse.
- Use of inhumane training techniques, equipment or methods including but not limited to poling or striking horse's legs with objects (i.e. tack poles, jump poles, etc.)
- Attaching any item or appliance that restricts movement or circulation of the tail.
- Inhumane treatment that causes a horse to bleed.
- Any surgical procedure or injection of any foreign substance or drug which could affect the horse's performance or alter its natural conformation or appearance is prohibited, except for those surgical procedures performed for the sole purpose of protecting the health of the horse.
- Exhibiting a horse that appears to be sullen, dull, lethargic, emaciated, drawn or overly tired.
- If fresh blood is found on any mouth and/or body areas of a horse, (i.e.: including but not limited to: barrel, flanks, belly,

sides, shoulders) the judge(s) must excuse the horse from the competition.

- Withholding food and/or water for prolonged periods of time such that it causes undue discomfort or distress to the horse.
- Excessive spurring or whipping;
- Excessive jerking of reins;
- Excessive fencing;
- Excessive or aggressive spinning;
- Use of prohibited equipment, including, but not limited to: saw tooth bits; hock hobbles; tack collars; or tack hackamores; riding in a curb bit without a curb strap; wire or solid metal curb straps no matter how padded; wire cavesson; wire or cable tie-downs (un-less wrapped or padded); bumper bits; metal bosals (no matter how wrapped or padded); chambons; headstalls made of metal (no matter how wrapped or padded), twisted rawhide, or rope may not be used on a horse's head (3/8 inch rope may be used with a slip/gag bit); running martingales used with curb bits and/or used without rein stops;
- Applying excessive pressure on or excessively jerking a halter lead shank or an allowed lip chain
- Any other treatment or conduct deemed by a show official to be inhumane or abusive.
- Exhibiting a horse that has an open, raw or bleeding sore that repeatedly comes in contact with the hackamore.

The standard by which conduct or treatment will be measured is that which a reasonable person, informed and experienced in generally accepted equine training and exhibition procedures, would determine to be cruel, abusive or inhumane.

A Show Steward may be employed by and be a representative of the ApHC. He/she shall monitor the treatment of horses on the WRMC property. Upon discovery by a show official, show steward or barn monitor of inhumane treatment, show management may immediately disqualify the horse and exhibitor and report the matter to the ApHC for further disciplinary action.

STALL RESERVATIONS

Pre-Entry Deadline: Received in office (with complete payment) by October 5

You must complete the ApHC stall reservation form found online. Please complete only one form per trainer/ranch/group. You must have your stalling information in the ApHC office by the pre-entry deadline to receive preferred stabling and pre-entry deadline prices. Stall location and/or availability are not guaranteed.

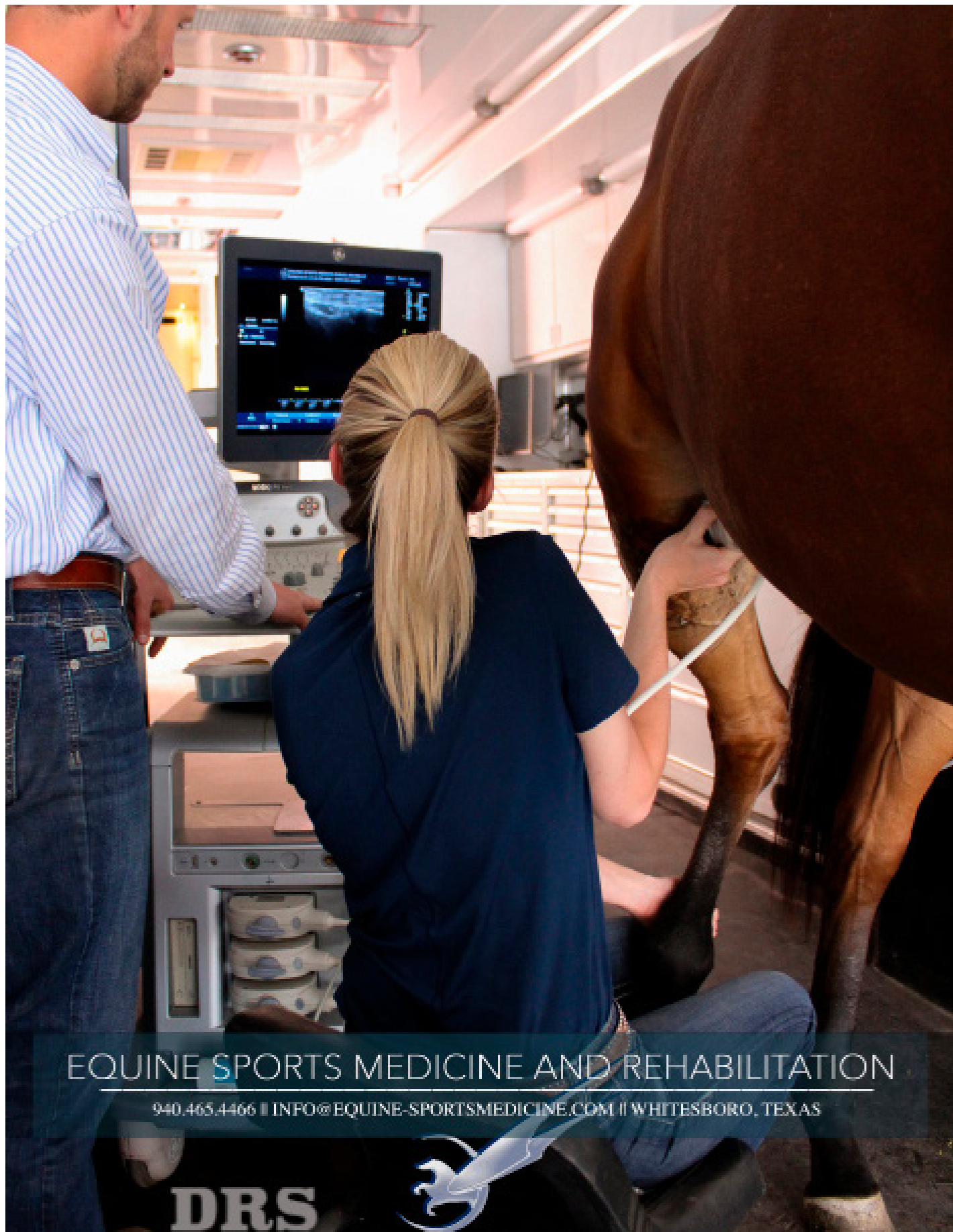
Late fees shall be assessed to both regular and daily stalls if the reservations are received after October 5. Late fees are \$100 per stall or \$45 per stall per day for daily stalls.

Stall reservations not received in the ApHC office by October 9 must be purchased using the online system.

Horses other than those registered with the Appaloosa Horse Club may be stalled on the grounds. However, ApHC-registered horses have stalling priority. Non-Appaloosa horses may be stalled with Appaloosa horses depending upon space availability. Stalling of all horses, including those not registered with the ApHC, is at the sole discretion of show management.

STALL FEES:

- \$275 (\$375 late) each – Burnett Building, Richard-Bass Building, Moncrief Building, Barn A (Equestrian Multi-Purpose Building)
- \$250 (\$350 late) each – Barn 4
- \$75 (\$120 late) per night - Daily Stalls are all located in Barn 4 or Barn 3.



EQUINE SPORTS MEDICINE AND REHABILITATION

940.465.4466 || INFO@EQUINE-SPORTSMEDICINE.COM || WHITESBORO, TEXAS

DRS



No stall reservations will be accepted without full payment of all stall fees. See PAYMENT PROCEDURES for information on how to purchase your stalls.

The stall reservation form must be completed and submitted with each horse's registered name and registration number. List all horses that will be occupying stalls. List all tack/feed stalls separately as "TACK/FEED". If your horse is in the process of being registered, include it on the stall card with the registration name and number as "REGISTRATION PENDING". Please indicate your first and second choices for stall locations (Refer to WRMC Facility Map online for building locations) and include aisle or end location and any other notes that may be helpful for personnel assigning your stall location. The number of stalls requested cannot exceed availability in that area.

If you are stalling with a trainer/ranch/group, send all stall requests AND PAYMENTS in the same envelope, choosing just one trainer/ranch/group name for the "stalled with" person. Include the total number of stalls on one card only. Stall requests not included in the same envelope or not faxed together are not guaranteed to be stalled together.

NOTE: The person listed as "stalled with" is responsible for all money due and will be held liable for all damages reported to stalls and is responsible for any payments due for damage or stall panels that are removed and not replaced by the exhibitor.

ApHC will attempt to stable each trainer/ranch/group according to choices requested on the stall reservation form. However, stabling decisions are made based upon the stabling history of the person listed as "stalled with" at this show and based upon the availability of stalls in the requested area(s).

If you request additional stalls upon arrival, or after the original request is received, those stalls must be paid for at the time of the request and may not be located with your other stalls. Stalls purchased after October 5 will be at late prices regardless of when you purchased your original stalls.

All reservations or changes to original reservations must be made in writing to the ApHC office. **Reservations or changes to current reservations will not be accepted over the phone.**

Stall locations will not be given out prior to your arrival at the WRMC. You must check in at the stall office in order to receive your stalling assignments.

Late stall reservations must be purchased using the online system.

STALL MOVE-IN/MOVE-OUT

Stalls will be available for move in after NOON on Tuesday, October 27. **Do not arrive prior to this as WRMC will be unable to accommodate early arrivals. Entry gates will be closed to allow for sanitizing/cleaning and waste removal between the previous show and the ApHC World Show. DO NOT ARRIVE PRIOR TO NOON ON TUESDAY, OCTOBER 27.**

Stalls in all barns, EXCEPT THE MONCRIEF BUILDING, must be vacated by 11:59 a.m. Monday, November 9.

Stalls in the Moncrief Building must be vacated by 11:59 p.m. on Sunday, November 8. If you typically stable in the Moncrief Building and are unable to vacate your stalls by the time, please notify the ApHC Stall Manager when reserving stalls to discuss alternate stabling options.

All horses participating in the show, i.e. entered, turn-back, assisting or any breed of horse on the grounds must be stalled. Horses CANNOT be tied to horse trailers.

Exhibitors are not allowed to change stalls without the approval of the stall manager. If you change stalls without the approval of the stall manager, you will be charged for both stalls. Stalls cannot be re-sold.

Air conditioning and/or heating units are not allowed in the barns.

Individual cooling units will be confiscated until the end of the show.

Will Rogers Memorial Center (WRMC) will assess a charge of \$15/panel for any portable stall panel that is removed during the show. These panels may be placed in the barn aisle prior to the start of the show. WRMC will remove the panels and replace them after the show. Exhibitors removing stall panels will be assessed these fees after the conclusion of the show upon ApHC receipt of the WRMC invoice.

Exhibitors may choose to fold back the stall panels in the portable stalls and zip-tie those and then re-assemble the stall at the conclusion of the show to avoid these charges. Stall panels in permanent stalls shall NOT be removed under any circumstances.

STALL DECORATIONS

If your stalls are located on an aisleway in the Burnett, Richardson-Bass, Moncrief or Equine Multi-Purpose buildings, the ApHC requests that they be decorated for the duration of the show for presentation to the public and to minimize any potential hazards that occur while assembling decorations and which may cause harm to fellow exhibitors and horses. If they are not, you may not receive consideration for that location at subsequent shows. **Additional COVID-19 protocols concerning stall decorations may be announced prior to the show. Compliance with these protocols is mandatory in order to retain your preferred stalling location.**

Stalls in the Burnett and Richardson-Bass buildings are on concrete floors and stalls measure 9'10" wide by 9'8" deep.

Portable stalls (measuring 9'5" x 9'5") are set in the Moncrief building, Equine Multi-Purpose building and in all the cattle barns. Stalls in the Equine Multi-Purpose Building are on concrete floors. Stalls in the Moncrief building and cattle barns are on dirt floors.

All materials used in decorating stalls must be treated with a fire retardant or be made of fire retardant material. Any fabric or paper used or draped on stalls must be fire-resistant or treated with flame retardant. Due to fire regulations, stall aisles cannot be blocked or closed off to through traffic. The Fire Marshall will be on-site randomly inspecting decorations for compliance with regulations. See FACILITY INFORMATION page 21 for complete regulations.

The person listed as "stalled with" is responsible for any damage to stalls, and for any clean-up of materials such as decorations, signs, fabric, nails, tacks, wires, etc. Any damages assessed by WRMC will be billed to the person listed as "stalled with".

STALL OFFICE HOURS

The stall office is located in the Moncrief Building and will open on Tuesday, October 27 at NOON and will be open 24 hours a day thereafter through the last class of the show.

STALL CHECK-IN PROCEDURES

After arriving at the Will Rogers Memorial Center, you must check-in at the stall office to receive your stall location.

You must verify with stall office personnel the names of all horses that will be stalled. You will receive a stall ledger from the stall office listing stall locations and proof of payment. The person listed as "stalled with" must sign the ledger accepting responsibility for any damages and stating that the stalls will be left in good, clean condition. This ledger must be presented in the show office when picking up your exhibitor packet. Exhibitor packets for horses entered that do not have verified stall locations will not be released.

STALL MAINTENANCE

Exhibitors are required to keep their stalls clean and neat, dispose



Proud Sponsor of:
Appaloosa Horse Club



Protect what Matters Most with the Kensington UVIATOR



Appaloosa Members Receive:

15% OFF any UViator

Now Through 12/31/2020 Enter Code: **APHC152020**



What makes the UViator different?

Solar Screen

Solar Screen by Textilene® is designed to block 90% of the harmful UV rays protecting even the most sensitive eyes.

CatchMask Fastener

This patented (7,624,558) CatchMask Fastener allows this fly mask to double as a Halter. This is the only mask of its kind on the market.



Solar Screen

Textilene® blocks 90% of harmful UV rays protecting even the most sensitive of eyes.



CatchMask

Doubles as a halter with the world's only CatchMask® Fastener. Patent 7,624,558



Textilene

- 1,000x2,000 Denier
- Extremely Durable

of refuse matter in designated dump areas and remove all items and materials they attach to the stalls, including decorations and all signs.

For more information regarding Will Rogers Memorial Center stall regulations, please see FACILITY INFORMATION on page 21.

STALL FORFEITURE OF LOCATION

Per Board motion, any suspended person or person otherwise ineligible to participate at the National and/or World Show(s) shall forfeit any preferred stall(s) location at the National and/or World Show(s). In connection with any member's stall entry reservation application for the National and/or World Show(s), if the person they list as "being stalled with" is suspended or ineligible to participate at the National and/or World Show(s), the member applicant will forfeit their preferred stalling location(s) at the National and/or World Show(s) as applicable. All other members stalling with any suspended or ineligible person will forfeit their preferred stalling location(s).

Stalling location refers to any established or designated area that the suspended or ineligible person has usually occupied. At the end of the suspension or ineligibility period any such preferred stall location(s) shall not revert back to the suspended or ineligible person or other members who forfeited their preferred stalling location(s).

STALL BARN RULES

See FACILITY INFORMATION on page 21.

STALL BEDDING

Shavings are for sale at the WRMC grounds. Current shavings prices are \$7/bag of small, loose shavings or \$10/bag of large, compressed shavings or large mixed shavings. Orders can be placed at the shavings office located in the Burnett building. **No outside commercial vendor deliveries will be permitted. Exhibitors are not allowed to bring their own shavings on to the grounds and will be billed for unauthorized shavings.** Costs to remove unauthorized bedding will be billed to the exhibitor.

As a service to World Show exhibitors, the ApHC will accept pre-bedding orders on behalf of the WRMC for orders of 50 or more bags of shavings. A pre-bedding form is available online by clicking on the World Show logo at www.appaloosa.com. **Submit pre-bedding forms completed in their entirety directly to the ApHC no later than October 9 and make checks payable to the ApHC. Requests not received in the ApHC office by October 9 will not be filled.** In most cases, delivery of pre-bed orders will be made prior to your arrival on the grounds.

You may also purchase shavings from WRMC upon arrival at the grounds. During evening hours when the shavings office is closed, you may purchase a limited amount of shavings from WRMC through the ApHC stall office.

The shavings vendor is not affiliated with the ApHC. The ApHC assumes no responsibility and/or liability of any kind in connection with any bedding/shavings purchased from the on-site vendor.

FEED

The Official Feed Supplier of the World Championship Show is Russell Feed & Supply. Only the Official Feed Supplier will be allowed to deliver feed or do business on the grounds. Orders can be placed by using the form available online by clicking on the World Show logo. Orders should be mailed directly to Russell Feed & Supply, NOT to the ApHC.

Russell Feed & Supply is not affiliated with the ApHC. WRMC regulations will not permit feed to be delivered to exhibitors from outside vendors, however exhibitors have the right to bring feed with them onto the WRMC property that has not been purchased from

the on-site vendor.

The ApHC assumes no responsibility and/or liability of any kind or connection with any hay and/or feed purchased from the on-site vendor.

GOLF CARTS

Will Rogers Memorial Center requires that all operators of golf carts observe the following rules to allow for safe and continued use of golf carts at the World Show. Any person operating a golf cart in an unsafe, reckless or dangerous manner will be detained by law enforcement officers. In some cases, golf carts can and will be impounded.

- Golf cart operators **MUST** have a valid driver's license with them at all times.
- Golf carts are prohibited inside the trade show and on arena concourses. Golf carts may be driven inside stall areas if operated in a safe manner with care exercised to avoid endangering people and animals.
- Golf carts may only be driven on the streets in the direction of traffic.
- Golf carts are prohibited inside all arenas unless the arena is specifically designated for that purpose. Golf carts may be used in show or exercise arenas only if operated by ApHC or WRMC show officials or personnel.
- Golf carts must yield to all pedestrians and horses and may not be parked blocking an entrance. Golf carts parked in front of handicapped entrances or ramps will be impounded.
- Golf carts can be parked on some sidewalks, but **SHALL NOT BE DRIVEN** on any sidewalks.

The use of the golf carts on Will Rogers Memorial Center grounds is a privilege. Anyone abusing this privilege will not be allowed to use any golf cart. Golf carts are not available for rental from the ApHC or the WRMC. See ad on page 15 for golf cart rental information.

PARKING

The following information has been provided by Will Rogers Memorial Center and details the parking requirements for the facility.

There is no charge for unloading either horses or trade show merchandise from the street. However you have to unload and move on – no street parking except for unloading. Exhibitors will need to set up their stall or booth after they unload since there is no parking on the streets. A parking fee will be charged when the trailer is moved to a parking lot.

Parking anywhere inside the complex is \$5/day per vehicle. Properly permitted vehicles may come and go from the property at will. Posted parking permit fees may differ from this, however parking for horse show attendees is \$5/day per vehicle. Please be sure to request the horse show fee when paying for parking.

There is no trailer parking inside the complex unless occupying a paid RV space. Trailer parking is not allowed south of the Moncrief building or the cattle barns.

RV spaces come with one parking pass for a tow vehicle at no extra charge. This pass will allow the vehicle to park in any lot on the property.

All of the parking attendants have the ability to take cash or credit cards. Multi day passes are available either on site or in advance online at www.culturaldistrictparking.com. Click on Appaloosa World Show for passes specific to this event. Online purchases require payment of a convenience fee. Purchases made on-site do not include this fee.

Please visit the ApHC Web site at www.appaloosa.com. Click on World Show and then on WRMC Parking for additional information and to get answers to frequently asked questions.

FREESTYLE REINING

\$5,000
ADDED

\$450
**TO THE HIGHEST
PLACING NON-PRO**

Learn more
on page 38

CHAMPIONSHIP

Larry Williams
PHOTOGRAPHY
© editorial

**JOIN
THE
FUN!**

**FRIDAY
NOVEMBER 6TH**



Trailers and/or vehicles violating posted or announced parking rules shall be subject to towing/impounding.

RECREATIONAL VEHICLES

WRMC offers RV spaces on the complex in various locations. Some spaces offer water/electricity only. There are 104 spaces north of the Richardson-Bass building that offer full hook-ups including sewer.

Space reservations are being accepted by the ApHC on a first-come, first-served basis. A reservation form can be found by clicking on the World Show logo on the home page at www.appaloosa.com. **Spaces may be reserved at the lowest rates if received and paid in full by October 5.**

All spaces should be reserved as soon as possible to guarantee availability.

ACCOMMODATIONS INFORMATION

The State of Texas provides a financial incentive package to the ApHC to host the World Championship Appaloosa Show & World Championship Appaloosa Youth Show in Fort Worth. In order to sustain their financial support, the ApHC must certify the number of hotel room nights utilized in Fort Worth during the show. Show attendees must provide lodging information **when completing entries.**

FARRIER

Only the official show farrier(s) will be permitted to conduct business on the grounds. Exhibitors wanting another farrier must request approval from show management.

COMMERCIAL EXHIBIT INFORMATION

For information contact the Trade Show Coordinator, ApHC, 2720 W. Pullman Road, Moscow, ID, 83843, (208) 882-5578 ext. 256. The trade show will be open daily from 9 a.m. to 6 p.m. The trade show will close at noon on Sunday, November 8.

Exhibitors will not be allowed to sell retail items from their stall locations. Exhibitors wishing to sell retail items must purchase trade show space from the ApHC, pay all applicable fees and are subject to abide by a contractual agreement between the ApHC and said vendor.

Vendors are subject to Texas State retail and tax laws.

DOGS/PETS

See FACILITY INFORMATION regarding pet regulations.

ELIMINATION, FINALS AND SCORING

Scoring

For the majority of classes either a four-judge or a three-judge format will be used to compute placings. This will be determined by show management. In most four-judge formats, the low scores will be discarded and the remaining three scores added together to determine final placing. In the three-judge format, no scores will be discarded, all three scores will be added together to determine final placing.

In placed classes, the judge's placing will be converted into numerical scores according to this chart.

1.....120	6.....55	11.....15
2.....105	7.....45	12.....10
3.....91	8.....36	13.....6
4.....78	9.....28	14.....3
5.....66	10.....21	15.....1

Cuts

In large classes when cuts are necessary, the cuts will be determined by a random draw. Each cut will enter the arena for judging and will be placed by all judges. Top placing entries from each cut will return to the arena for a final go-round. The same exhibitor must exhibit the same horse in both the cut and the final. The same equipment must be used on each horse in the cut and the final.

Tie-Breaking Procedures

All ties, except first place in individual performance events, will be broken by a tie-breaking judge (pre-determined by show management before the class begins). If a tie occurs for first place in any individual performance class judged complete or in any individual performance class finals judged complete, there will be a work-off for first place only. Individual performance classes include western riding, reining, working hunter, cutting, trail, ranch trail, ranch riding and judged roping events.

In the event of a first-place tie in working cow horse, see Rule 741.F in the *Official Handbook of the ApHC* for tie-breaking procedures.

Eliminations

Eliminations may be held in classes when warranted by the number of entries in the class and shall be at the discretion of show management. Any horse receiving a no-time or a no-score in an elimination round will be eliminated. In case of a tie, except in stumps and stake races, all those tied will go forward to the finals. In the event that it is not necessary to run an elimination round, the class will be run complete at the time the final round is scheduled.

In **Camas Prairie Stump Race** and **Nez Perce Stake Race**, if a tie occurs in an elimination round for the last position in the finals bracket, those horses tied will re-run on time only with the fastest time advancing.

In **timed calf roping**, **timed heading and heeling**, and **cutting**, the combined scores (cutting) and times (roping) in the elimination round and the finals will be used to determine the final placing. In the finals, the working order shall be determined by the times (in roping). The horse with the fastest qualifying time (in roping) will be the last to work in the finals for that class. The working order in the finals of any cutting classes will be determined by a random draw of those qualified to compete in the finals. In **timed heading and heeling**, the entrant must have the same helper in both the elimination and final rounds.

Once an elimination round has been held, no change of horse/rider combination or tack/equipment is allowed for the finals.

In most classes, when possible the top 16 horses will be called back for the finals. In all cutting classes, the top 10 finalists will return for the finals.

AWARDS

Ribbons & Trophies

In all ApHC World Show and Youth World Show classes, a Champion trophy will be awarded to all first place winners and the Reserve Champion trophy awarded to second place. Ribbons will be awarded for 1st through 10th place.

Medallions & Non-Pro Medals

All ApHC open classes are medallion classes except green (western riding, western pleasure, trail, hunter under saddle) classes, ranch horse conformation, Champion of Champion classes, Windemere classes, freestyle reining, and stallion service auction futurity classes.

All non-pro classes are medal classes except non-pro yearling longe line (western and hunter), novice cutting, non-pro ranch horse conformation, non-pro boxing and non-pro walk/trot classes.

There must be at least 3 horses shown in a class for it to be considered eligible for a medallion or non-pro medal.

Arena WerksTM.com

The Ultimate Rotary Harrow
(800) 644-3724 or arenawerksinfo@sbcglobal.net

*"My family has trusted **Arena Werks** drags for three generations. I'm proud to have Randy and his whole crew on my team to keep my ground in top shape for all of our events; from reining and cutting, to roping and going down the fence!"*

*— Chris Dawson,
NRCHA Million Dollar Rider*

800-644-3724

arenawerksinfo@sbcglobal.net



1025 DOT
Water Trailer



Pictured is Shine Smarter,
owned by Linda Mars

PROVERBS 16:3

10' Elite

**VISIT ARENAWERKS.COM
TO SEE WHAT'S NEW AND EXCITING!**

Youth classes are not eligible for medallions or medals.

Escrow of Awards

All awards and premium/award checks will be issued pending notification of drug testing results. If a horse tests positive for unapproved drugs or unacceptable levels of approved medication(s), all ribbons, trophies, and other awards must be held in escrow by the ApHC until notification of the Disciplinary Committee's decision.

Premium Payback

Halter and Performance classes: \$300 added to each class. Total purse includes \$30 of each entry fee (all horses entered in the class minus those vet scratched). Added money plus entry fee money will be divided as follows: 1st-40%; 2nd-25%; 3rd-15%; 4th-10%; 5th-5%; 6th-5%.

No premium payback will be given in non-pro equitation, horsemanship, showmanship or novice classes. No premium payback is given in youth classes. All premium checks will be mailed to the current, first-listed owner or lessee on record only (as determined by ApHC records at the time class is held). Any other arrangements for premium award payments are between trainer and owner(s) and are not the responsibility of the ApHC. When class size is less than 6 entries, all unpaid premiums are retained by the ApHC. For tax purposes, a 1099M for premiums won will be issued to the current owner of record at the time of the show. In the instance of multiple owners, a 1099M will be issued to the first current owner listed on the Certificate of Registration. The social security number listed on the W-9 form should be that of the owner, or in cases of multiple owners, that of the first listed current owner.

Premium and/or award checks will be mailed after drug test results are received by the ApHC.

AWARD CALCULATIONS & TIE-BREAKING PROCEDURES

Horses will receive points toward special open and non-pro awards for 1st through 10th place. First place will receive 11 points, 2nd place will receive 9 points, and so on down to last place which will receive 1 point unless otherwise specified. If there are less than 10 horses in a class, scores will be based on the number competing with the 1st place horse receiving one more point than the number of horses in the class, the 2nd place horse receiving 2 fewer points than the 1st place horse and the 3rd place horse receiving 1 less point than the 2nd place horse and so on down to last place which shall receive 1 point unless otherwise specified.

Unless otherwise stated under individual award listing, in the case of a tie, the horse earning points in the greater number of classes that count toward that award will be the winner. If that fails to break the tie, the horse placing 1st through 10th over the greatest number of total entries will be the victor.

In the case of a tie in the youth or non-pro division, the youth or non-pro earning points in the greater number of classes that count toward the award will be the winner. If that fails to break the tie, the youth or non-pro earning points in the greater number of performance classes will be the winner. If that fails to break the tie, the youth or non-pro placing 1st through 10th over the greatest number of total entries will be the winner.

The ApHC does not accept responsibility for misprints in daily award tabulations. All information is not final until verified.

WORLD'S BEST APPALOOSA

In order to compete for this title, a horse must enter and compete in a minimum of three categories to be eligible. The horse's top two World's Best point earning placings in each of five categories will be used to calculate placing. In addition, the horse must earn World's

Best points in a minimum of two categories. Categories for tabulation of World's Best Appaloosa are listed below. ONLY the following classes will be used for tabulation of this award:

- I. Halter (all age divisions except weanlings and FPD classes), Most Colorful at Halter, Hunter in Hand (except yearling division), and Performance Halter.
- II. Junior & Senior Western Pleasure, Junior & Senior Hunter Hack, Pleasure Driving, Junior & Senior Hunter Under Saddle, and Saddle Seat Pleasure.
- III. Junior & Senior Reining, Junior & Senior Western Riding, Junior & Senior Trail, Working Hunter, Junior & Senior Ranch Riding, Junior & Senior Ranch Trail, Junior & Senior Ranch Rail Pleasure.
- IV. Camas Prairie Stump Race, Nez Perce Stake Race, Rope Race, Keyhole Race and Figure 8 Stake Race.
- V. Steer Daubing, Junior & Senior Cutting, Heading & Heeling, Junior & Senior Judged Tie-Down Roping, Junior & Senior Judged Heading, Junior & Senior Judged Heeling, Timed Tie-Down Roping, Junior & Senior Working Cow Horse.

The following table will be used for tabulating World's Best points:

No. of Horses	1st	2nd	3rd	4th	5th	6th	7th	8th	9th	10th
3-5	1									
6-8	2	1								
9-11	3	2	1							
12-14	4	3	2	1						
15-17	5	4	3	2	1					
18-20	6	5	4	3	2	1				
21-23	7	6	5	4	3	2	1			
24-26	8	7	6	5	4	3	2	1		
27-29	9	8	7	6	5	4	3	2	1	
30 & Over	10	9	8	7	6	5	4	3	2	1

Ties will be broken in the following manner: 1) The horse placing in the greater number of categories in first through tenth place, then 2) the horse placing in the greater number of classes listed above in first through tenth place, then 3) the horse defeating the greater number of entries in the classes listed above.

The horse named World's Best Appaloosa will receive: \$1,500 from the Appaloosa Horse Club, a three-horse gooseneck aluminum trailer with dressing room for one year's use compliments of Twin Cities South Trailer Sales, LLC of Pilot Point, Texas – Gary & Tammy Raak, and a custom-made Elite Custom Saddles Trophy Saddle.

The reserve World's Best Appaloosa will receive an etched glass commemorative award sponsored by the Appaloosa Horse Club.

CHAMPION CATTLE HORSE

Classes that count toward this award are 141, 142, 161, 162, 181, 182, 220, 231, 232, 236, 237, 240, and 250.

Champion: \$1,000 from the Appaloosa Horse Club and a custom sterling silver Montana Silversmiths belt buckle.

Reserve Champion: Custom sterling silver Montana Silversmiths belt buckle.

CHAMPION WESTERN HORSE

Classes that count toward this award are 341, 342, 343, 361, 362, 381, 382, 421 and 422.

Champion: \$1,000 from the Appaloosa Horse Club and a custom sterling silver Montana Silversmiths belt buckle.

Reserve Champion: Custom sterling silver Montana Silversmiths belt buckle.

Day Sponsors

It would
not be possible
without you!

Thursday, October 29

The Knight Family

Friday, October 30

Reno 911, owned by Keylee Grenier

Saturday, October 31

**Heather Runyon Show Horses
& Wagon Road Farm**

Sunday, November 1

John & Debby Letham

Monday, November 2

Pat Odell Performance Horses

Tuesday, November 3

**Mike Hachtel of Espuela Ranch
& Wendy Shuknecht**

Wednesday, November 4

Marilyn Allen and Jeff Klein

Thursday, November 5

The Shepherd Family

Friday, November 6

DalWorth ApHC, in honor of Debbie Cruse

Saturday, November 7

Total Refrigeration LLC

Sunday, November 8

Shaun & Alicia Fleming

For more information, visit

www.appaloosa.com/association/sponsors.htm
208-882-5578 ext. 256, marketing@appaloosa.com

CHAMPION ENGLISH HORSE

Classes that count are 401, 402, 430, 441, 442, 460 and 500.

Champion: \$1,000 from the Appaloosa Horse Club and a custom sterling silver Montana Silversmiths belt buckle.

Reserve Champion: Custom sterling silver Montana Silversmiths belt buckle.

CHAMPION GAMES HORSE

Classes that count are 270, 280, 290 and 300.

Champion: \$1,000 from the Appaloosa Horse Club and a custom sterling silver Montana Silversmiths belt buckle.

Reserve Champion: Custom sterling silver Montana Silversmiths belt buckle.

CHAMPION RANCH HORSE

Classes that count are 541, 542, 552, 554, 555, 556, 557, 558 and 559.

Champion: \$1,000 from the Appaloosa Horse Club and a custom sterling silver Montana Silversmiths belt buckle.

Reserve Champion: Custom sterling silver Montana Silversmiths belt buckle.

HIGH-POINT OVER FENCES HORSES

An award will be presented to the high-point over fence horse in the open divisions. Classes that count toward the open award are 401, 402, 500, 520, and 523.

An award will be presented to the high-point over fence horse in the non-pro division. Classes that count toward the non-pro award are 150, 160 and 170.

Awards are sponsored by Page Simpson of Jacksonville, Florida.

WORLD SHOW LEADING BREEDER

An award will be given to the breeder earning the most points from horses placing in the top ten at the World Championship Show.

For a breeder to be eligible, at least three of that breeder's horses must be exhibited. The breeder is determined by ApHC records. For example, John Doe (#123456) may compete against his wife Jane Doe (#654321) and against his farm John & Jane Doe Acres (#111222). The first listed breeder according to ApHC records and as printed on the Certificate of Registration will receive points for that horse's placing. This award will be calculated based upon pre-entries only. Horses will earn points counting toward the Leading Breeder Award for receiving 1st through 10th place. First place will receive 11 points, 2nd place will receive 9 points, and so on through 10th place which will receive 1 point unless otherwise specified. If there are less than 10 entries in a class, points will be computed based on the number competing. However, first place will always receive 2 more points than 2nd place and 2nd place will receive 1 more point than 3rd place and 3rd place will receive one more point than 4th place and so on.

In case of ties, the breeder of horses placing 1st through 10th over the greater number of entries will be the winner. If that fails to break the tie, the breeder of horses placing 1st through 10th in the greatest number of classes will be the winner.

The ApHC does not accept responsibility for misprints in daily award tabulations. All information is not final until verified.

The following open classes will count toward the World Show Leading Breeder Award:

HALTER: O24, O27, O16, O17, O28, O18, O19, O29, O30, O31, O32, O33, O34, O35, O53, O54, O55, O56, O57, O58, O59, O73, O74, O75, O76, O77, O78, O86, O94, O95, O96.

PERFORMANCE: O141, O142, O161, O162, O181, O182, O220,

O231, O232, O236, O237, O240, O250, O270, O280, O290, O300, O341, O342, O343, O361, O362, O381, O382, O393, O394, O401, O402, O421, O422, O423, O424, O426, O427, O430, O431, O432, O441, O442, O444, O445, O460, O500, O520, O523, O541, O542, O554, O555, O556, O557, O558, O559.

The Leading Breeder will receive an etched glass award to commemorate this achievement sponsored by the Appaloosa Horse Club.

KAREN GRIMM MEMORIAL OVERALL HIGH POINT EXHIBITOR

An award will be given to the overall high point exhibitor in open classes at the World Show. The exhibitor can show multiple horses. Only open classes count. Multiple placings may be earned by one exhibitor who is able to show more than one horse in classes in which this is allowed. In this case, all placings earned by the exhibitor will count toward the award.

Points will be awarded to the exhibitor for 1st through 10th place. First place will receive 11 points, 2nd place will receive 9 points, and so on down to 10th place which will receive 1 point unless otherwise specified. If there are less than 10 horses in a class, scores will be based on the number competing with the 1st place horse receiving one more point than the number of horses in the class, the 2nd place horse receiving 2 fewer points than the 1st place horse and the 3rd place horse receiving 1 less point than the 2nd place horse and so on down to last place which shall receive 1 point unless otherwise specified. The highest point-earning exhibitor based on performance in all open classes will be named the overall high point exhibitor.

In case of a tie, the award will be presented to the exhibitor who 1) competed in the greatest number of classes. If that fails to break the tie, the award will be presented to the exhibitor who 2) defeated the greatest number of entries.

ALL-AROUND NON-PRO & YOUTH

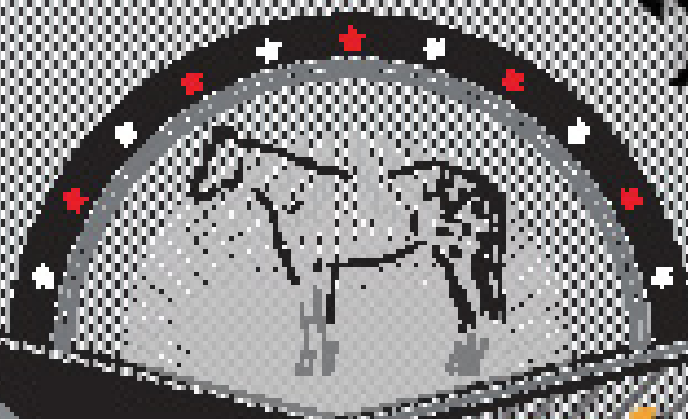
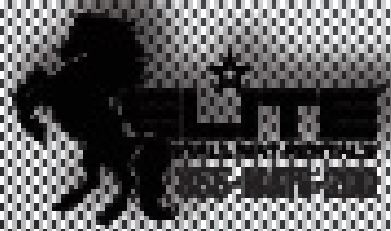
In order to compete for all-around honors, a contestant must compete in at least 3 performance events. They must also compete in 3 or more categories (halter is considered one category). Novice non-pro, 35 & over non-pro, masters non-pro, walk/trot non-pro, Windemere, Champion of Champion, walk/trot youth, novice youth and leadline classes don't count toward these awards.

The winner of the all-around is determined by adding the points earned by each contestant and his/her horse in every approved class in which he/she has placed in the top six. Points are compiled on a one horse-one exhibitor basis. A contestant may exhibit more than one horse; however, the points earned by the contestant with each will be compiled separately.

Scoring will be as follows: Contestant placing in the top six will be given a point for each exhibitor placing below them, plus one point, not to exceed six points for first place. Points are calculated through sixth place. Example: In a class of 6 or more horses, the first place contestant receives 6 points, second place gets 5 points; and so on through sixth place. In a class of 4 entries, the first place contestant receives 4 points, second gets 3 points, etc.

No points are awarded to a disqualified contestant, regardless of the number in the class. However, when less than 6 are placed, even though more than 6 entered in the class, points will be awarded on the basis of the number exhibited in the class.

In case a tie occurs, the contestant will be declared the All-Around who 1) placed 1st through 6th in the greater number of nationally pointed non-pro classes on one horse, 2) the contestant placing 1st through 6th winning over the greatest number of horses, 3) the contestant who earned the most points toward this award in performance classes.



ELITE STALL MAT RENTALS

ORDER
NOW

APPALOOSA

... WORLD CHAMPIONSHIP ...



29 08



stallmatrentals.com

Categories for tabulation of the All-Around non-pro are listed below and ONLY the following non-pro classes will count toward this award:

- I. Showmanship at Halter, English Showmanship (youth only)
- II. Bareback Horsemanship, Hunt Seat Equitation, Hunt Seat Equitation Over Fences, Saddle Seat Equitation, Western Horsemanship
- III. Camas Prairie Stump Race, Figure 8 Stake Race, Keyhole Race, Nez Perce Stake Race
- IV. Hunter Hack, Hunter Under Saddle, Pleasure Driving (non-pro only), Saddle Seat Pleasure, Trail, Western Pleasure, Western Riding, Working Hunter, Heritage (youth only), Ranch Riding, Ranch Trail, Ranch Rail Pleasure
- V. Cutting, Breakaway Roping, Judged Tie-Down Roping (non-pro only), Judged Heading, Judged Heeling, Timed Tie-Down Roping (youth only), Timed Heading & Heeling (non-pro only), Reining, Ranch Reining, Working Cow Horse (non-pro only), Steer Daubing
- VI. Halter (all age divisions), Hunter In Hand (all sex divisions), Most Colorful At Halter

NON-PRO SPECIAL AWARDS

Novice non-pro classes, 35 & over non-pro classes, masters non-pro classes, non-pro walk/trot classes and non-pro ranch conformation only count toward awards in those respective divisions. They do not count toward any other non-pro special awards.

Non-pro yearling longe line (western and hunter), non-pro ranch conformation and non-pro boxing do not count toward any special awards.

A non-pro may use more than one horse and all points will be combined, except where specifically stated. **In classes in which a non-pro can exhibit more than one horse (trail, games, western riding, reining, cutting, roping, ranch riding, ranch trail, over fences etc.) only the non-pro's highest placing in each class will count toward the high-point award.**

APHC ALL-AROUND NON-PRO

\$500 from the Appaloosa Horse Club, an Elite Custom Saddles trophy saddle, custom sterling silver Montana Silversmiths belt buckle and a three-horse gooseneck aluminum trailer with dressing room (one year's use) compliments of Twin Cities South Trailer Sales LLC of Pilot Point, TX and Gary & Tammy Raak.

HIGH-POINT & RESERVE NON-PRO

All non-pro classes count toward this award (except those listed above). In classes in which a non-pro can exhibit more than one horse (western riding, trail, reining, cutting, ranch riding, roping etc.), only the non-pro's highest placing in each class will count toward the high-point award.

High-Point: \$250 from the Appaloosa Horse Club, Elite Custom Saddles trophy saddle and a custom sterling silver Montana Silversmiths belt buckle.

Reserve High-Point: A custom sterling silver Montana Silversmiths belt buckle.

HIGH-POINT & RESERVE 35 & OVER NON-PRO

All 35 & over non-pro classes count toward this award. In classes in which a non-pro can exhibit more than one horse (trail, western riding etc.), only the non-pro's highest placing in each class will count toward the high-point award.

High-Point: Custom sterling silver Montana Silversmiths belt buckle.

Reserve High-Point: Custom sterling silver Montana Silversmiths belt buckle.

HIGH-POINT & RESERVE MASTERS NON-PRO

All masters classes count toward this award. In classes in which a non-pro can ride more than one horse (western riding, trail, reining, cutting etc.), only the non-pro's highest placing in each class will count toward the high-point award.

High-Point: Custom sterling silver Montana Silversmiths belt buckle.

Reserve High-Point: Custom sterling silver Montana Silversmiths belt buckle.

HIGH-POINT & RESERVE NOVICE NON-PRO

All novice non-pro classes count toward this award. In classes in which a non-pro can ride more than one horse (trail etc.), only the non-pro's highest placing in each class will count toward the high-point award.

High-Point: Custom sterling silver Montana Silversmiths belt buckle.

Reserve High-Point: Custom sterling silver Montana Silversmiths belt buckle.

HIGH-POINT & RESERVE WALK/TROT NON-PRO

All walk/trot non-pro classes count toward this award. In classes in which a non-pro can ride more than one horse (trail, games etc.), only the non-pro's highest placing in each class will count toward the high-point award.

High-Point: Custom sterling silver Montana Silversmiths belt buckle.

Reserve High-Point: Custom sterling silver Montana Silversmiths belt buckle.

CHAMPION NON-PRO GAMES HORSE

Classes that count are N270, N281, N290, N301. Calculation for this award is a one horse/one rider calculation.

Champion: Custom sterling silver Montana Silversmiths belt buckle

CHAMPION NON-PRO CATTLE HORSE

Classes that count are N380, N390, N410, N420, N440, N450, N600, N610, N620.

Calculation for this award is a one horse/one rider calculation.

Champion: Custom sterling silver Montana Silversmiths belt buckle.

CHAMPION NON-PRO RANCH HORSE

Classes that count are N650, N660, N670, N680, N690. Calculation for this award is a one horse/one rider calculation.

Champion: Custom sterling silver Montana Silversmiths belt buckle.



Hodges Badge Company, Inc.

Visit Us Online for Our Entire Selection of Awards

Call today for your **FREE** Equestrian catalog and sample ribbon packet!

NOW OFFERING!

Custom Mask - MASK7

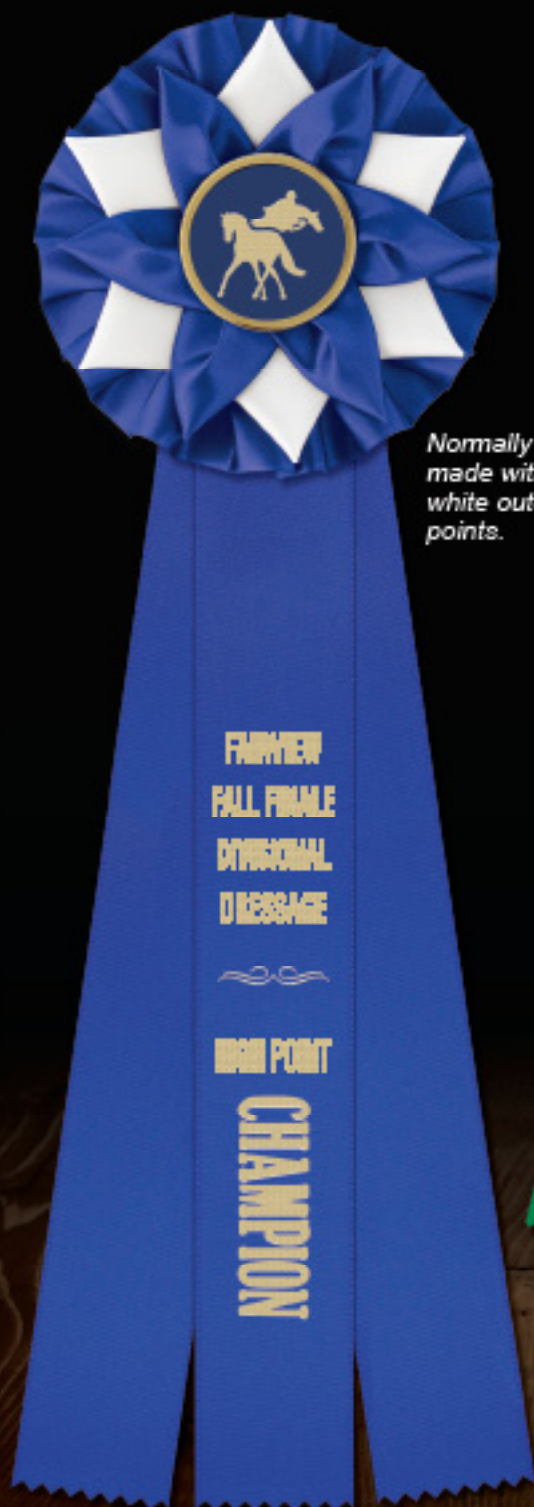
- 2-Ply Custom Face Mask w/Ear Loop
- Available in 2 sizes
- \$5.00 EA, Quantity Pricing available
- 25 Piece minimum
- Any logo/design and color!



Find us on



*Normally
made with
white outer
points.*



Exeter - E263



Beauty - E223

10% OFF

100 Year Anniversary
Special on Beauty Rosettes!



Ideal - E213

CHAMPION NON-PRO HALTER EXHIBITOR

Classes that count are N503, N504, N505, N506, N507, N513, N514, N515, N516, N517, N523, N524, N525, N526, N527, N540, N550, N560, N570.

Calculation for this award is based upon the non-pro who may show multiple horses.

Champion: Custom sterling silver Montana Silversmiths belt buckle.

CHAMPION NON-PRO WESTERN EXHIBITOR

Classes that count are N330, N340, N350 and N370. Calculation for this award is based upon the non-pro who may show multiple horses.

Champion: Custom sterling silver Montana Silversmiths belt buckle.

CHAMPION NON-PRO SHOWMANSHIP/ EQUITATION EXHIBITOR

Classes that count are N110, N140, N160, N310, N320, N360. Calculation for this award is based upon the non-pro who may show multiple horses.

Champion: Custom sterling silver Montana Silversmiths belt buckle.

CHAMPION NON-PRO ENGLISH EXHIBITOR

Classes that count are N120, N130, N150, N170, N190. Calculation for this award is based upon the non-pro who may show multiple horses.

Champion: Custom sterling silver Montana Silversmiths belt buckle and award from Schneider's Saddlery – the official English sponsor of the Appaloosa Horse Club.

NON-PRO SPORTSMANSHIP

Custom sterling silver Montana Silversmiths belt buckle.

ELITE CUSTOM SADDLES HIGH-POINT AWARDS

Elite Custom Saddles will provide additional awards to twenty High-Point and Champion winners. Thank you Elite Custom Saddles.

YOUTH SPECIAL AWARDS

All youth classes count for youth high-point awards except novice, leadline, youth ranch horse conformation, youth boxing, and walk/trot classes.

Novice classes and walk/trot classes only count toward awards in those respective youth divisions. They do not count toward any other youth special awards.

A youth may use more than one horse and all points will be combined except where specifically stated.

In classes in which a youth can exhibit more than one horse (trail, games, western riding etc.), only the youth's highest placing in each class will count toward the high-point award.

APHC ALL-AROUND YOUTH

Elite Custom Saddles trophy saddle, custom Montana Silver-smith buckle, custom embroidered award from Schneider's Saddlery, three-horse gooseneck aluminum Sundowner Trailer (one year's use) sponsored by Twin Cities South Trailer Sales, LLC – Gary & Tammy Raak of Pilot Point, TX. See ALL-AROUND NON-PRO AND YOUTH AWARD CALCULATION for rules.

HIGH-POINT & RESERVE YOUTH, 13 & UNDER

In classes in which a youth can exhibit more than one horse (trail, games, western riding etc.), only the youth's highest placing in each class will count toward the high-point award.

High-Point: Elite Custom Saddles trophy saddle, custom Montana Silversmith buckle, custom embroidered award from Schneider's Saddlery

Reserve High-Point: Custom Montana Silversmith buckle, custom embroidered award from Schneider's Saddlery

HIGH-POINT & RESERVE YOUTH, 14 - 18

In classes in which a youth can exhibit more than one horse (trail, games, western riding etc.), only the youth's highest placing in each class will count toward the high-point award.

High-Point: Elite Custom Saddles trophy saddle, custom Montana Silversmith buckle, custom embroidered award from Schneider's Saddlery

Reserve High-Point: Custom Montana Silversmith buckle, custom embroidered award from Schneider's Saddlery

HIGH-POINT & RESERVE NOVICE YOUTH, 18 & UNDER

In classes in which a youth can exhibit more than one horse (trail etc.), only the youth's highest placing in each class will count toward the high-point award.

High-Point: Custom Montana Silversmith buckle, custom embroidered award from Schneider's Saddlery

Reserve High-Point: Custom Montana Silversmith buckle, custom embroidered award from Schneider's Saddlery

HIGH-POINT & RESERVE WALK/TROT, 10 & UNDER

In classes in which a youth can exhibit more than one horse (trail, games etc.), only the youth's highest placing in each class will count toward the high-point award.

High-Point: Custom Montana Silversmith buckle, custom embroidered award from Schneider's Saddlery

Reserve High-Point: Custom Montana Silversmith buckle, custom embroidered award from Schneider's Saddlery

HIGH-POINT & RESERVE WALK/TROT, 11 - 18

In classes in which a youth can exhibit more than one horse (trail etc.), only the youth's highest placing in each class will count toward the high-point award.

High-Point: Custom Montana Silversmith buckle, custom embroidered award from Schneider's Saddlery

Reserve High-Point: Custom Montana Silversmith buckle, custom embroidered award from Schneider's Saddlery

Larry Williams

Photography & Design
Official Show Photographer

2020 has been full of **SURPRISES**! Here's another one.....

Class of 2020 Graduates **20% Off Your Order**

Contact us for details and other special offers!

Best wishes to all exhibitors on a successful and **safe** show!
We are **happy** to serve you & appreciate your business!

Posed Photo Backdrop and Arena PROOFS located in Brown-Lupton North



View and order arena proofs anytime by
scanning this QR code with your smartphone



special thanks to Ruthie Photography

Larry & Karen Williams
989-889-1771
www.LarryWilliamsPhotog.com

ZIPPOS SENSATION

HIGH-POINT YOUTH OVER FENCES

Award sponsored by Page Simpson

Youth classes that count toward the award are Y170, Y360, Y380. Calculations are based upon the youth rider who may show multiple horses. All placings earned by the youth in these classes count toward the award.

HIGH-POINT 18 & UNDER EQUITATION RIDER

Custom Montana Silversmith buckle, custom embroidered award from Schneider's Saddlery

Youth classes that count toward this award are Y130, Y141, Y142, Y151, Y152, Y160, Y170. Calculation for this award is based on the youth rider who may show multiple horses.

RANDY CUTBIRTH MEMORIAL AWARD

(Highest Scoring Youth Reiner)

Custom Montana Silversmith buckle-sponsored by the Friends of Randy Cutbirth to the champion youth reiner in Y190.

OVERALL HIGH POINT GAMES EXHIBITOR

Custom Montana Silversmith buckle

Youth classes that count toward the award are Y211, Y212, Y221, Y222, Y261, Y262, Y371, Y372.

Calculation for this award is based on the youth rider who may show multiple horses.

OVERALL HIGH POINT RANCH HORSE

Custom Montana Silversmith buckle

Youth classes that count toward the award are ranch classes Y650, Y660, Y670, Y680, Y690.

OVERALL HIGH-POINT YOUTH

Custom Montana Silversmith buckle awarded to the high-point youth in either the 13 & Under category or the 14-18 category earning the most number of points toward that award.

YOUTH SPORTSMANSHIP AWARD

Custom Montana Silversmith buckle

ADDITIONAL AWARDS & SPONSORS

The Appaloosa Youth Association (AYA) sponsors custom embroidered jackets for each youth champion exhibitor who wins a World Championship Youth title. Certificates will be presented to be redeemed at Tioga Territory. *Note: One jacket per youth exhibitor. Multiple class wins can be custom embroidered on the same jacket.*

The Appaloosa Horse Club sponsors custom embroidered jackets for each youth reserve champion exhibitor in a World Championship Youth class. Certificates will be presented to be redeemed at Tioga Territory. *Note: One jacket per youth exhibitor. Multiple class wins can be custom embroidered on the same jacket.*

Leadline exhibitors and Walk/Trot Youth 10 & Under exhibitors will each receive a plush stuffed pony compliments of Appaloosa Horse Club.

SCHNEIDER'S SADDLERY AWARDS

As an official ApHC award supplier, Schneider's Saddlery provides \$5000 in awards for the World Championship and Youth World Championship Shows.

CLASS INFORMATION FREESTYLE REINING

See rule 716.F in the *Official Handbook of the ApHC* for current rules. Exhibitors are required to submit the following items to the show office no later than noon, Wednesday, November 4.

1. List of props. Note: Props may not include open flames or live animals (except that additional horses may be allowed in the arena). Show management reserves the right to rule on props in addition to music and dress.
2. CD with contestant name, horse name and back number. CDs should only contain the musical track for the performance. Note: Exhibitors be aware that the audio equipment provided by WRMC may not play CDs produced on your computer. Music will be tested in advance of the performance if provided by the deadline. It is the responsibility of the exhibitor to have alternate music available should the CD submitted not play.
3. Opening script (optional)
4. Specific instructions concerning the script, music and lighting. Instructions should be explicit and simple.

Note: There are no spotlights available for the performance. There are two levels of house lights, either low or regular. Low house lights are allowed during set-up for each individual performance and during the first 15 seconds and last 15 seconds of any individual performance. At all other times, house lights must be on. When submitting your music and instructions, indicate light levels to be used during your performance.

Freestyle Reining Awards

\$5,000 added money will be paid out according to the following schedule: Champion-\$2,250, Reserve Champion-\$1,000, 3rd place-\$650, 4th place-\$450, 5th place-\$200. The Highest Placing Non-Pro will receive \$450 in addition to any other monies earned by placing in 1st through 5th place.

Note: In order to be eligible for non-pro awards, the exhibitor must be enrolled in the ApHC non-pro program and must meet all non-pro requirements (including ownership requirements) as outlined in the *Official Handbook of the ApHC*.

Freestyle Reining Payback

Payback: 100% of the entry fee will be paid back according to the following table:

Entries				
Place	2-5	6-9	10-13	14-18
1st	60%	45%	40%	35%
2nd	40%	37%	30%	26%
3rd		18%	20%	19%
4th			10%	13%
5th				7%

HERITAGE

All entries for ladies' and men's heritage class must submit a type-written, double-spaced description of their costume. This description must not be more than 200 words, written in third person and must be submitted to the show office by 6:00 p.m. the day prior to the class. The announcer will read the costume description for each entrant during the course of the class. The ApHC reserves the right to edit content. When the announcer has finished reading the description, each exhibitor will have one minute (this will be timed) to answer questions posed by the judges or to give additional information

FINALLY!

Something to Look Forward to in 2020!



PERFORMANCE
HORSES

\$2500



CHAMPION OF CHAMPIONS

Open to those placing in the top 3 in all open and non-pro western pleasure classes! **Western Pleasure**



\$2500

CHAMPION OF CHAMPIONS

Open to those placing in the top 3 in all open and non-pro hunter under saddle classes! **Hunter Under Saddle**

100% payback of added money and entry fees to top placings in each class.
See page 42 in the premium book for complete rules.

SPONSORED BY:



J/S TRAINING
Jim & Sandy



PERFORMANCE
HORSES
Erin Greathouse



David & Wendy Jo
McCain

Ford Farms
Tommy & Judy Ford

about their costume. At the expiration of the one-minute time limit, the judges will move on to the next exhibitor without delay.

NSBA DUAL-APPROVED CLASSES

Entry Fee - \$20. There is no post entry charged for NSBA entries.

The ApHC has entered into an agreement with the National Snaffle Bit Association (NSBA) to approve classes for NSBA points and awards. In order to compete for NSBA recognition, the owner and exhibitor of the horse must be NSBA members. These classes will run concurrently with regular ApHC classes. Those exhibitors who wish to compete for NSBA awards and points in the available classes must either complete the NSBA entry form available online, or check the NSBA box under each eligible class using the online entry system. Owners and exhibitors competing for NSBA dual-approved recognition must provide proof of NSBA membership or purchase NSBA membership at the time entries are made.

The ApHC will provide class results to NSBA for inclusion in NSBA standings. Those exhibitors receiving first place NSBA honors in these classes will also receive a NSBA trophy.

To purchase NSBA membership, contact:

National Snaffle Bit Association

4203 Grove Avenue

Gurnee, IL 60031

(847) 623- 6722 phone

(847) 625-7435 fax

No refunds will be given for NSBA dual-approved class fees.

For a complete list of eligible classes, refer to the schedule in this premium book for classes designated as NSBA-dual approved.

TEAM ROPING (NON-PRO AND YOUTH)

In non-pro and youth judged heading and judged heeling classes, the non-pro or youth will be allowed to rope with any partner of their choosing. Non-pro and youth ropers are not required to team rope with non-pro or youth members. However, all partners must be members in good standing of the ApHC and must use horses regularly registered with the ApHC. Horses with an "N" certificate of registration that have not received a performance permit shall not be eligible to assist during the World Show. Headers are not allowed to "tie-on" in non-pro or youth judged heeling.

YEARLING LONGE LINE

See the *Official Handbook of the ApHC* for complete rules. At the World Championship Appaloosa Show, each exhibitor may show a maximum of two horses in each longeline class including stallion service auction longeline, non-pro longeline and any specialty association longeline classes.

MOST COLORFUL AT HALTER

Given in Memory of James H. Wild, 1st place will receive \$750, 2nd place will receive \$500 and 3rd place will receive \$250. The James H. Wild Memorial is sponsored by Flying W Appaloosa Ranch of Sarcoxie, MO.

WINDEMERE HUNTER CLASSIC

High-Point Classes & Calculations

(Round 1) Horses must show in O523 Pre-Green Hunter, O520 Green Hunter or O500 Working Hunter. Or the horse may be shown and count points in N170 Non-Pro Working Hunter or Y360 Youth Working Hunter but only if the horse is not being shown in any open working hunter class. These classes will be considered "Round 1" and each horse may earn points from one class in round 1 toward the

overall high-point award standings. If a horse is shown in more than one open class in round 1, they will count points toward the award from the class in which they earned the highest number of points. (Example - if the horse places 1st of 3 horses in one class and earns 4 points and also places 5th in a class of 12 horses thereby earning 6 points, the horse will receive 6 points toward the high-point award in round 1.) Horses shall only count points from non-pro working hunter or youth working hunter toward the high-point award if they are not shown in any of the open classes listed above.

(Round 2) All horses competing for the Windemere Hunter Classic high-point award must enter O528 Windemere Hunter Classic in round 2. This is a working hunter class in which all horses compete against every other horse competing for the high-point award. Fence heights will vary in this class to allow for pre-green and green horses to maintain their class eligibility. The Pre-Green course will include fences ranging in height from 2'6" - 2'9". The Green course will include fences ranging in height from 2'9" - 3'0". The open course will include fences ranging in height from 3'0" - 3'3". The working order in the class will be determined by the fence height at which each horse jumps. Horses placing 1st through 10th in the Hunter Classic in round 2 will earn points toward the high-point award. This is a non-qualifying class and any horse may enter regardless of whether or not they competed in round 1. Horses ridden by non-pro or youth competitors and not shown in any open classes will jump fence heights corresponding with their non-pro or youth classes.

Payback in this class will be according to Premium Payback rules contained in this premium book except that there will be no added money to the payback purse. Post entry fees apply to horses entered after the pre-entry deadline. All other rules contained in this premium book apply to entries in this class. Ribbons will be awarded through 10th place in this class.

(Round 3) All horses competing for the high-point award will compete in class O529 Windemere Hunter Under Saddle Classic. Horses will be shown at the walk, trot and canter both directions on the rail. Judges may ask for variations of gaits including extended gaits and/or hand gallop. Judges will place this class as a rail class. Ribbons will be awarded through 10th place in this class. Horses placing 1st through 10th in the Hunter Under Saddle Classic in round 3 will earn points toward the high-point award. This is a non-qualifying class but is limited to horses that competed in the Hunter Classic class in round 2.

The entry fee for this class is \$60. Post entry fee of \$90 is due for those horses entered after the pre-entry deadline. \$45 from each entry fee paid into this class (or \$65 from each post entry fee) will be paid back to the overall top point-earning horses in the Windemere Hunter Classic High-Point Award calculation.

See AWARD CALCULATIONS & TIE-BREAKING PROCEDURES for information on how points are awarded in each class/round toward the high-point award standings.

Awards & Sponsors

Awards will be given to the top 10 point-earning horses based upon calculations from all three rounds.

Sponsorship money received prior to the World Show will be paid back to top point-earning horses in the high-point calculations. In addition, a portion of entry fees from round 3 will be added to the payback purse for the overall high-point winners.

Additional information on payback and awards will be available at the World Show as the breakdown is dependent upon the number of horses entered.

STALLION SERVICE AUCTION INCENTIVE CLASSES

Horses entering these classes must meet all Stallion Service Auc-

to our Saddle & Buckle Sponsors

It would not be possible
without you!

Saddle Sponsors

World's Best Appaloosa – Windemere Equestrian Center
All-Around Non-Pro – Dal Worth ApHC, in honor of Debbie Cruse
High-Point Youth 13 & Under – Sue Scobee & Wilburn Archer
High-Point Youth 14-18 – Ken Johnson
All-Around Youth – ApHC stallion, The Best Bet Yet

Buckle Sponsors

The Fleming Family
Hand It To Hunter, multiple National & World Champion stallion
Winning Ways Ranch
Wissota Appaloosa Horse Club
Kyle Rice
Brenda and Larry Weyers
Avery Comanics
Lynn and Dave Bliss of Austin-Bliss Farm
Luis and Janelle Hernandez
Rockin Spots Appaloosas
Patty McCartin Show Horses
Stephanie Marcus-Lavik and Lads Got Style
Reno 911, owned by Keylee Grenier
Celestial Acres
Dr. Ted Zajac and Saucon
Arron Kief & Leola Carter
Barb "Teach" Tool
Mary Boisvert and Boisvert Farms
Morgan Ramsey Miller
Trish and Bob Doyle
Tonya Stolski
Ray and Holly Anderson from Meshoppen, Pennsylvania
Integrity Home Mortgage/Faye Strickler
Bennett Barrel Racing
Dr. Jennifer Weeks
Keystone ApHC
Capstone Farm
France Appaloosas home of Tell Me Im Hot
Oregon Trail Appaloosa Horse Club Queen Emma Shierk
Western Massachusetts Appaloosa Association
Deerfield Farm Equestrian LLC
Savana Floyd and Colton Cruse
Garden State Appaloosa Association
The Johnson Family
Breyer in memory of Lil' Ricky Rocker
The Wilhelm Family
The Knight Family

For more information, visit

www.appaloosa.com/association/sponsors.htm
208-882-5578 ext. 256, marketing@appaloosa.com

tion eligibility requirements. Horses may enter one or more classes (if eligible) to compete for incentive monies.

There is a \$150 pre-entry fee for each class with a post entry fee of 1.5 times the pre-entry fee (or \$225). Post entries must be received and paid for by 6 p.m. the day prior to the day each class is scheduled. No refunds will be issued in Stallion Service Auction incentive classes.

World Show trophies and ribbons will be presented in each class. Incentive payouts will be held pending notification of drug testing results.

Payouts will be issued according to the following scale.

PAYOUT SCHEDULE

Yearling & Two-Year-Old Classes

	1st	2nd	3rd	4th	5th	6th	7th
1	100%						
2-5	2	60%	40%				
6-9	3	45%	35%	20%			
10-13	4	40%	30%	20%	10%		
14-18	5	34%	27%	20%	10%	9%	
19-24	6	32%	22%	19%	10%	9%	8%
25-287	28%	22%	17%	10%	9%	8%	6%

PAYOUT SCHEDULE

Weanling Class

	1st	2nd	3rd	4th	5th	6th	7th
1	100%						
2	60%	40%					
3	49%	34%	17%				
4+	45%	30%	15%	10%			

CHAMPION OF CHAMPIONS HUNTER UNDER SADDLE

CHAMPION OF CHAMPIONS WESTERN PLEASURE

The top 3 horses in open (junior, senior, two-year-old, three-year-old, green) hunter under saddle classes and non-pro (non-pro, 35 & over, masters, novice) hunter under saddle classes are eligible to return and compete in the \$2500 Champion of Champions class. The entry fee is \$100 and 100% of entry fees will be added to the \$2500 added money to determine the payout in the class. A random draw at the conclusion of the class will be held to award \$250 to anyone not placing in the top 3. **This class is sponsored by Beck Farms.**

The top 3 horses in open (junior, senior, two-year-old, three-year old, green, men's, ladies') western pleasure and non-pro (non-pro, 35 & over, masters, novice) western pleasure classes are eligible to return and compete in the \$2500 Champion of Champions class. The entry fee is \$100 and 100% of entry fees will be added to the \$2500 added money to determine the payout in the class. A random draw at the conclusion of the class will be held to award \$250 to anyone not placing in the top 3. **This class is sponsored by 3G Performance Horses and Rockin' MD Ranch.**

Two new NSBA-carded judges will judge these classes who have not seen the horses compete during the show and who will only be judging these events.

If a horse wins a title in more than one class, owners can choose which class they represent when showing in Champion of Champions.

Examples:

- 1 - If a horse becomes eligible as a result of placing in the top 3 in 35 & over non-pro western pleasure and junior western

pleasure, the owner can choose to exhibit the horse as a non-pro or the rider that exhibited the horse in the junior class can ride the horse in champion of champions.

- 2 - If a rider becomes eligible as a result of placing in the top 3 in more than one open class, they may choose which horse to ride in champion of champions. The owner(s) of other eligible horses ridden by that exhibitor may designate a catch rider for the champion of champions class but the new rider MUST have already exhibited in a class at the World Show or the owner of the horse is eligible to ride the horse in champion of champions even if they have not shown in a class at the World Show.
- 3 - If a non-pro rider becomes eligible as a result of placing in the top 3 in more than one non-pro class on different horses, they may choose which horse to ride in champion of champions. They may select another eligible non-pro rider to exhibit their additional horse(s) but that rider must meet non-pro eligibility requirements to show the horse, meaning that all non-pro ownership and membership requirements must be satisfied OR they may select an open catch rider to exhibit their extra horse(s) but any open catch rider MUST have already exhibited in a class at the World Show.

Entries placing below 3rd place in any class will not be moved up in the event of a vacancy in the class. All ApHC equipment and attire rules apply in both classes.

Payout is based upon the number of entries in the class as follows. A W-9 must be on file for the first listed owner of the horse in order to receive payback:

	1st	2nd	3rd	4th	5th	6th	7th
1	100%						
2-5	2	60%	40%				
6-9	3	45%	35%	20%			
10-13	4	40%	30%	20%	10%		
14-18	5	34%	27%	20%	10%	9%	
19-24	6	32%	22%	19%	10%	9%	8%
25-28	7	28%	22%	17%	10%	9%	8%
							6%

STARS & STRIPES SUMMER SPECTACULAR

Appaloosa Horse Club in conjunction with the Appaloosa Foundation (a charitable 501(c)(3) organization) are sponsoring a show for equestrians with disabilities. There are 23 available classes and the show will be held Friday, November 6 in the W.R. Watt Arena at the Will Rogers Memorial Center. This event is open to all breeds of horses. Exhibitors must be a member of ApHC to compete. Those exhibitors wishing to compete for NSBA awards must also be NSBA members.

The entry forms and associated fees are available on the ApHC web site at www.appaloosa.com.

AWARDS: Champion buckle & jacket in each class, reserve champion buckle in each class, ribbons to top 10 in each class.

For more information, please visit the ApHC web site at <http://www.appaloosa.com/national-show/national-show.htm> for updated information, show & class sponsors and entry forms.

ALL DONATIONS TO SUPPORT THIS EVENT SHOULD BE MAILED TO APPALOOSA HORSE CLUB, DIRECTED TO THE APPALOOSA FOUNDATION AND ARE TAX DEDUCTIBLE

CONTACT INFORMATION

Appaloosa Horse Club

2720 W Pullman Road Moscow, ID 83843

(208) 882-5578 Phone (208) 882-8150 Fax

www.appaloosa.com

Use the following address to ship prior to the show:

Will Rogers Memorial Center

c/o Appaloosa World Show

3401 West Lancaster Ave Fort Worth, TX 76107

(817) 871-8150 Phone

(817) 871-8170 Fax

Use the following address to ship during the show:

Will Rogers Memorial Center

c/o Appaloosa World Show

1501 Rip Johnson Dr

Fort Worth, TX 76107



DON'T MISS THE
\$1500
ADDED
MOST COLORFUL
AT HALTER

THURSDAY, NOV. 5TH

IN MEMORY OF JAMES H. WILD
SPONSORED BY FLYING W RANCH
OF SARCOXIE, MO

**K
H**

KELLY HERD

FINE JEWELRY SINCE 1983



**LET US CUSTOMIZE
SOMETHING FOR YOU!**

SHOP ONLINE

www.KellyHerdJewelry.com



GOLD • SILVER • CUSTOM DESIGN

CONTACT US

1-866-617-4653

KellyHerd@kellyherdjewelry.com

SHOW OFFICIALS

Executive Secretary	Lynette Thompson
Show Manager.....	Keri Minden-LeForce
Arena Manager.....	Jack Owen
Director of Marketing	Hannah Cassara
Show Secretary / Judges' Coordinator	Debra Schnitzmeier
Scoring.....	ApHC I.T. Staff
Appaloosa Journal Editor	Dana Russell
Appaloosa Journal Advertising Director	Hannah Cassara
Appaloosa Journal/Show Premium Art Director	Barbara T. Lawrie
Stall Manager.....	Alpha Russell
Assistant Stall Manager	Lissa Jones
Inspectors.....	Butch McGlothlin, Jerry Banks
Announcers	Dave Branham, Denny Oviatt, Butch Bruton
Drug Testing Veterinarian	Jeff Pollock, D.V.M

SHOW SERVICES

Show Veterinarian.....	Equine Sports Medicine – Whitesboro, TX
Farrier	Kirk Knowlton
Photographer.....	Larry Williams Photography
Videographer	3 2 1 Action Video
Over Fences Course Equipment & Design.....	Tucker Williams, Classy Courses Inc.

OFFICIAL JUDGES

Andrea Koehn	Jonesburg, MO
Andrea Simons	Aubrey, TX
Charlene Carter.....	Goodlettsville, TN
Cheryl Ogle	Moscow, TN
Daren Wright	Chillicothe, OH
Debra Jarvis	Kaufman, TX
Eric Hubbard.....	Fresno, CA
Jodi Finkenbinder.....	Gainesville, TX
Lori Gordon.....	Washington, PA
Nancie Wright	Penrose, CO

NCHA CUTTING JUDGES

TBA

RING STEWARDS

Cindy Dockter.....	Coleman, TX
Debbie McMasters	Madison, TN
John Tabb	Greenbrier, TN
Alan Henderson.....	Lafayette, NJ
Dee Dee Douglas	Owensville, MO
Ron McMillian	Collinsville, OK
Nico Perrin.....	Neuilly, Le Real FRANCE

EQUIPMENT JUDGES

Delena Doyle.....	Azle, TX
Sherry Haynes.....	Stephenville, TX
Cindy Chilton-Moore	Broken Arrow, OK

CAPTURE THE MOMENT



Action Video
professional video production
& webcasting

Official Videographer of the ApHC

Watch the Live Webcast

**Order Your HD Videos on
DVD or Digital Upload**

www.321actionvideo.com

2020

WORLD

CHAMPIONSHIP APPALOOSA SHOW



★ 2020 World Championship Appaloosa Youth Show ★

Tentative Class Schedule

Tuesday, October 27

12 Noon - 24 hours

NO EARLY ARRIVAL ALLOWED. NO EXCEPTIONS. Gates will be closed to allow for sanitizing/cleaning and waste removal between the previous show and the ApHC World Show. Do not arrive prior to noon on Tuesday. Entrance gates will open at noon for move-in.

ALL BARNS

MONCRIEF BUILDING

W.R. WATT ARENA

Horses Move In

ApHC Stall Office Open

Closed for cutting set up

12:00 Noon – 9:00 pm

R/B BUILDING

Vendors Move In

Wednesday, October 28

24 hours

ALL BARNS

MONCRIEF BUILDING

W.R. WATT ARENA

Horses Move In

ApHC Stall Office Open

Closed for cutting set up

8:00 am – 8:00 pm

8:00 am – 6:00 pm

8:00 am – 5:00 pm

1:00 pm – 4:00 pm

R/B BUILDING

R/B BUILDING

BURNETT BUILDING

JOHN JUSTIN ARENA

Vendors Move In

Show Office Open

ApHC Inspection Station Open

Ride the Pattern Seminar

✓ indicates NSBA dual-approved class

Thursday, October 29

Proudly sponsored by The Knight Family

8:00 am

8:00 am – 5:00 pm

W.R. Watt Arena

9:00 am – 6:00 pm

USCHA Cutting

John Justin Arena

3:00 pm

R/B BUILDING

BURNETT BUILDING

Show Office Open

ApHC Inspection Station Open

N440	Non-Pro Breakaway Roping
Y250	Breakaway Roping, 18 & Under
O181	Junior Judged Tie-Down Roping
O182	Senior Judged Tie-Down Roping
N600	Non-Pro Judged Tie-Down Roping
O220	Timed Tie-Down Roping – ELIMINATIONS
N410	Non-Pro Timed Tie-Down Roping – ELIMINATIONS
Y230	Timed Tie-Down Roping, 18 & Under
O220	Timed Tie-Down Roping
N410	Non-Pro Tie-Down Roping
O250	Steer Daubing
N420	Non-Pro Steer Daubing
Y350	Steer Daubing, 18 & Under

Will Rogers Coliseum

12:00 pm

N318	Masters Non-Pro Showmanship
O17	Hunter in Hand, Four & Older Mares
O19	Hunter in Hand, Four & Older Geldings
O24	Hunter in Hand, Two & Older Stallions
O18	Hunter in Hand, Two & Three-Year Old Geldings
N320	Non-Pro Western Horsemanship
✓ O442	Senior Hunter Under Saddle
O394	Ladies' Heritage
✓ O362	Senior Western Riding

Pre Entry	Equip/Cattle	Optional NSBA
140	40	
85	40	
140	40	
140	40	
140	40	
140	40	
140	40	
85	40	
FINALS		
FINALS		
140	40	
140	40	
85	40	
105		
140		
140		
140		
140		
105		
140		
140		
140		
20		

GLENDA THE GOOD WITCH

Presents the 12th Annual

PUMPKIN DECORATING CONTEST



GREAT PRIZES IN
MULTIPLE
CATEGORIES:

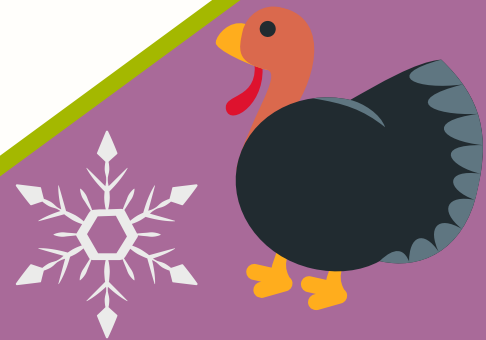
*Paint it! Carve it!
Decorate it!*



Return Pumpkins by
NOVEMBER 4TH
at Noon for Judging



\$300 in Cash Prizes!
(must be 3 entries)



AND THIS YEAR...

**HOLIDAY-THEMED
STALL DECORATING
CONTEST!**

*Ghosts & Pumpkins,
Turkeys & Leaves,
Santa & Snow...
Up To You!*



Listen for
BARN ANNOUNCEMENTS!

O460	Saddle Seat Pleasure	140	20
✓ N330	Non-Pro Western Pleasure	140	20

Friday, October 30

Proudly sponsored by Reno 911, owned by Keylee Grenier

		Pre Entry	Equip/ Cattle	Optional NSBA
W.R. Watt Arena				
8:00 am				
C2	ApCHA Three-Year-Old Cutting Futurity, FIRST GO			
C4	ApCHA Five & Six-Year-Old Cutting Classic			
O141	Junior Cutting - ELIMINATIONS	140	185	
C10	ApCHA Masters Non-Pro Jane Norman Memorial Cutting			
O142	Senior Cutting - ELIMINATIONS	140	185	
C1	ApCHA Four-Year-Old Cutting Derby, FIRST GO			
N380	Non-Pro Cutting - ELIMINATIONS	140	185	
N389	Novice Non-Pro Cutting	105	140	
Y180	Cutting, 18 & Under	85	140	
C15	ApCHA Ranch Cutting			
USCHA Cutting				
ARENA CLOSED after USCHA Cutting				

John Justin Arena

7:30 am				
O231	Junior Judged Heading	140	40	
O232	Senior Judged Heading	140	40	
N610	Non-Pro Judged Heading	140	40	
Y710	Judged Heading, 18 & Under	85	40	
O236	Junior Judged Heeling	140	40	
O237	Senior Judged Heeling	140	40	
N620	Non-Pro Judged Heeling	140	40	
Y720	Judged Heeling, 18 & Under	85	40	
O240	Heading & Heeling - ELIMINATIONS	140	40	
N390	Non-Pro Heading & Heeling - ELIMINATIONS	140	40	
O240	Heading & Heeling	FINALS		
N390	Non-Pro Heading & Heeling	FINALS		
RE-SET ARENA				
O028	Hunter in Hand, Yearling Fillies	140		
O016	Hunter in Hand, Two & Three-Year Old Mares	140		
✓ N338	Masters Non-Pro Western Pleasure	140		20
N456	Non-Pro Boxing	140	70	
✓ O441	Junior Hunter Under Saddle	140		20
N328	Masters Non-Pro Western Horsemanship	105		
✓ O365	Green Western Riding	140		20

Will Rogers Coliseum

8:00 am				
H4	Appaloosa Halter Futurity Weanling Fillies, Non-Pro			
H3	Appaloosa Halter Futurity Weanling Colts & Geldings, Non-Pro			
H2	Appaloosa Halter Futurity Weanling Fillies, Open			
H1	Appaloosa Halter Futurity Weanling Colts & Geldings, Open			
H5	Appaloosa Halter Futurity Miniature Class			
H6	Appaloosa Halter Futurity Yearling Fillies, Non-Pro			
H7	Appaloosa Halter Futurity Yearling Colts & Geldings, Non-Pro			
O80	Stallion Service Auction Two-Year-Old Halter Incentive	150		

Saturday, October 31

Proudly sponsored by Heather Runyon Show Horses & Wagon Road Farm

		Pre Entry	Equip/ Cattle	Optional NSBA
W.R. Watt Arena				
7:30 am				
C2	ApCHA Three-Year-Old Cutting Futurity	FINALS		
C1	ApCHA Four-Year-Old Cutting Derby	FINALS		
C5	ApCHA Non-Pro Bonanza			
O142	Senior Cutting	FINALS		
C3	ApCHA Limited Rider			
O141	Junior Cutting	FINALS		
N380	Non-Pro Cutting	FINALS		
C7	ApCHA 7 & Up Cutting			
USCHA Cutting				
ARENA CLOSED after USCHA Cutting				
John Justin Arena				
7:30 am				
N513	Non-Pro Weanling Fillies	140		
N514	Non-Pro Yearling Fillies	140		
N515	Non-Pro Two-Year-Old Mares	140		
N516	Non-Pro Three-Year-Old Mares	140		
N517	Non-Pro Aged Mares	140		

BEST *of the* WEST

GIFT EXPO

October 29 – November 8, 2020



Commercial vendor information located at www.appaloosa.com
or contact the Marketing Department at (208) 882-5578 ext. 273
marketing@appaloosa.com

O085	Stallion Service Auction Weanling Halter Incentive	150		
N310	Non-Pro Showmanship	105		
O342	Senior Reining	140		
N325	35 & Over Non-Pro Western Horsemanship	105		
O029	Hunter in Hand, Yearling Geldings	140		
O027	Hunter in Hand, Yearling Colts	140		
N140	Non-Pro Saddle Seat Equitation	105		
✓ O444	Three-Year-Old Snaffle Bit Hunter Under Saddle	140		20
✓ N348	Masters Non-Pro Western Riding	140		20
O161	Junior Working Cow Horse	140	70	
N130	Non-Pro Saddle Seat Pleasure	140		
✓ O447	Green Hunter Under Saddle	140		20
N335	35 & Over Non-Pro Western Pleasure	140		
N450	Non-Pro Working Cow Horse	140	70	
✓ N340	Non-Pro Western Riding	140		20

Multi-Purpose Building

1:00 pm – 24 hours

At-Will Trail Practice

Sunday, November 1

Proudly sponsored by John & Debby Letham

West Sale Arena

9:00 am

Cowboy Church

		Pre Entry	Equip/ Cattle	Optional NSBA
John Justin Arena				
7:30 am				
N319	Novice Non-Pro Showmanship	105		
N315	35 & Over Non-Pro Showmanship	105		
N503	Non-Pro Weanling Colts	140		
N504	Non-Pro Yearling Colts	140		
N505	Non-Pro Two-Year-Old Stallions	140		
N506	Non-Pro Three-Year-Old Stallions	140		
N507	Non-Pro Aged Stallions	140		
N370	Non-Pro Reining	140		
O393	Men's Heritage	140		
O343	Hackamore/Snaffle Bit Reining	140		
N337	Non-Pro Walk/Trot Western Pleasure	140		
✓ O431	Yearling Longe Line, Western	140		20
Y456	Boxing, 18 & Under	85	70	
N327	Non-Pro Walk/Trot Western Horsemanship	105		
✓ O361	Junior Western Riding	140		20
O162	Senior Working Cow Horse	140	70	

Will Rogers Coliseum

9:00 am

O389	Stallion Service Auction Yearling In-Hand Trail - NEW!	150	40	
✓ O385	Green Trail	140	40	20
✓ O381	Junior Trail	140	40	20
✓ O382	Senior Trail	140	40	20

RE-SET ARENA

O300	Nez Perce Stake Race - ELIMINATIONS	140		
O300	Nez Perce Stake Race	FINALS		

Multi-Purpose Building

1:00 pm – 24 hours

At Will Trail Practice

W.R. Watt Arena

9:00 am

USCHA Cutting

ARENA CLOSED after USCHA Cutting

Monday, November 2

Proudly sponsored by Pat Odell Performance Horses

		Pre Entry	Equip/ Cattle	Optional NSBA
John Justin Arena				
11:00 am				
N523	Non-Pro Weanling Geldings	140		
N524	Non-Pro Yearling Geldings	140		
N525	Non-Pro Two-Year-Old Geldings	140		
N526	Non-Pro Three-Year-Old Geldings	140		
N527	Non-Pro Aged Geldings	140		
N540	Non-Pro Most Colorful at Halter	140		
Champion & Reserve Champion Cattle Horse				
Champion Non-Pro Cattle Horse				
✓ N531	Non-Pro Yearling Longe Line, Western	140		20
✓ O430	Pleasure Driving	140		20

Appaloosa PRO★COLLECTION

tioga territory



CALL TODAY!

Ask us about customization!

www.tiogaterritory.com

1-800-279-3052



N360	Non-Pro Bareback Horsemanship	105		
O341	Junior Reining	140		
✓O426	Two-Year-Old Snaffle Bit Western Pleasure	140		20
N550	Non-Pro Hunter in Hand Stallions	140		
N570	Non-Pro Hunter in Hand Geldings	140		
N560	Non-Pro Hunter in Hand Mares	140		
✓O427	Three-Year-Old Snaffle Bit Western Pleasure	140		20

Will Rogers Coliseum

7:30 am

N355	Non-Pro 35 & Over Trail	140	40	
✓N350	Non-Pro Trail	140	40	20
✓N358	Masters Non-Pro Trail	140	40	20
✓N359	Novice Non-Pro Trail	105	40	20
N357	Non-Pro Walk/Trot Trail	140	40	

RE-SET ARENA

Champion Non-Pro Western Exhibitor

N307	Non-Pro Walk/Trot Nez Perce Stake Race	140		
N301	Non-Pro Nez Perce Stake Race-ELIMINATIONS	140		
N301	Non-Pro Nez Perce Stake Race	FINALS		
	Hunter Hack Practice			

Tuesday, November 3

Proudly sponsored by Mike Hachtel of Espuela Ranch & Wendy Shuknecht

		Pre Entry	Equip/ Cattle	Optional NSBA
John Justin Arena				
7:30 am				
O053	Weanling Fillies	140		
O054	Yearling Fillies	140		
O055	Two-Year-Old Mares	140		
O056	Three-Year-Old Mares	140		
O057	Aged Mares	140		
O058	Broodmares	140		
O095	Foundation Pedigree Designation Halter, Mares	140		
O059	Performance Halter Mares	140		
O446	SSA Two-Year-Old Hunter Under Saddle Incentive	150		
✓N339	Novice Non-Pro Western Pleasure	105		20
N127	Non-Pro Walk/Trot Hunter Under Saddle	140		
✓O432	Yearling Longe Line, Hunter	140		20
N125	35 & Over Non-Pro Hunter Under Saddle	140		
✓O422	Senior Western Pleasure	140		20
N329	Novice Non-Pro Western Horsemanship	105		
N117	Non-Pro Walk/Trot Hunt Seat Equitation	105		
R4	ApRHA Open Derby			
O435	SSA Two-Year-Old Western Pleasure Incentive	150		
N115	35 & Over Non-Pro Hunt Seat Equitation	105		
✓N190	Non-Pro Pleasure Driving	140		20
✓O425	Green Western Pleasure	140		20

Will Rogers Coliseum

7:30 am

✓O401	Junior Hunter Hack	140	20	20
✓N150	Non-Pro Hunter Hack	140	20	20
✓O402	Senior Hunter Hack	140	20	20
O280	Camas Prairie Stump Race-ELIMINATIONS	140		
O280	Camas Prairie Stump Race	FINALS		
R8	ApRHA Non-Pro Ranch Riding Maturity			
R15	ApRHA Three-Year-Old Ranch Riding Futurity			
	Hunter Hack Practice			

Show Office

3:00 – 5:00 pm

Over Fences Paid Practice – Sign up in Show Office

Wednesday, November 4

Proudly sponsored by Marilyn Allen & Jeff Klein

		Pre Entry	Equip/ Cattle	Optional NSBA
John Justin Arena				
7:30 am				
O073	Weanling Geldings	140		
O074	Yearling Geldings	140		
O075	Two-Year-Old Geldings	140		
O076	Three-Year-Old Geldings	140		
O077	Aged Geldings	140		
O096	Foundation Pedigree Designation Halter, Geldings	140		
O078	Performance Halter Geldings	140		
Y408	Youth Junior Mares, Two & Under	85		

to our Class Sponsors

It would not be possible without you!

Terry & Karen Sartain
Elizabeth Duh and Little Creek Farm
Lonnie Cruse Show Horses and The Bickford Family
Monty Bruce Training Center
Sandra Johnson Ross & James Ross
Claudia and Brad Dickinson
Zipped
Johnny and Colleen Angland
Mary Edwards, in memory of Larry Edwards
Texas Appaloosa Horse Club
Kory Kumar
American Acres Training Center owned by trainer Carol Jones
Shawn and Tracy Reynolds
Pamela Hargesheimer, in memory of Frederick Raysser
Calizona ApHC, in memory of Rick Raysser
Debbie Cruse
Jennalinn Show Horses
Liz's Barn Quilts, Elizabeth Summar Curtis
William and Carol Taufmann
Northwood Stable of Lisbon, New York
Gina DiGangi
Greves Equine Center
Deborah Tate
Leon James Style
Amanda Somerset and Ciara Colon
Barbara Brutzman
Jude and Mollie Crayton
Goose Chase Farm
Elvada Farm, Mike and Karen Cindy Vanelswyk
The Grogan Family
Duane and Paula Gatewood of Gatewood Arena in Dry Ridge, KY
Maestas Show Horses
Deerfield Farm & The Diamant Family
Erin Farnsworth and Alta Equine
Coker Real Estate Group
Steve & Jill Bennett
Sue and Melanie Cormier
Dave and Jennifer Gans
Deb Dyer and the team at Advantage Ranch
Gale Gores Performance Horses
Mike and Martha Howard
Sue Scobee
Laurie Scott
Caleb Pearson Farrier Services
Delaware Appaloosa Horse Association
The Ackerson Family
Kaia Marie Olson
Isabella Doan
Drew and Kim Dees

For more information, visit

www.appaloosa.com/association/sponsors.htm
208-882-5578 ext. 256, marketing@appaloosa.com

Y508	Youth Junior Geldings, Two & Under	85		
Y409	Youth Senior Mares, Three & Older	85		
Y509	Youth Senior Geldings, Three & Older	85		
Y520	Youth Most Colorful at Halter	85		
Champion Non-Pro Halter Exhibitor				
High-Point & Reserve High-Point 35&Over Non-Pro				
✓ N532	Non-Pro Yearling Longe Line, Hunter	140		20
O424	Ladies' Western Pleasure	140		
✓ N680	Non-Pro Ranch Riding	140		20
N378	Masters Non-Pro Reining	140		
✓ N120	Non-Pro Hunter Under Saddle	140		20
✓ O445	Two-Year-Old Snaffle Bit Hunter Under Saddle	140		20
O541	Junior Ranch Reining	140		
N110	Non-Pro Hunt Seat Equitation	105		
✓ O421	Junior Western Pleasure	140		20
Champion Non-Pro English Exhibitor				
Champion Non-Pro Showmanship/Equitation Exhibitor				
✓ O559	Senior Ranch Rail Pleasure	140		20

Will Rogers Coliseum

6:00 am –

ApHC Over Fences Paid Practice – Fences 2'6" – 2'9"
 ApHC Over Fences Paid Practice – Fences 2'9" – 3'0"
 ApHC Over Fences Paid Practice – Fences 3'0" – 3'3"/3'3"+

8:30 am

✓ Y360	Youth Working Hunter, 18 & Under	85	40	20
N160	Non-Pro Hunt Seat Equitation Over Fences	105	40	
Y170	Youth Hunt Seat Equitation Over Fences, 18 & Under	85	40	
✓ N170	Non-Pro Working Hunter	140	40	20
✓ O500	Working Hunter	140	40	20
✓ O520	Green Hunter	140	40	20
O523	Pre-Green Hunter	140	40	
O528	Windemere Hunter Classic	140	40	
O529	Windemere Hunter Under Saddle Classic	60		

High-Point Non-Pro Over Fence Horse

High-Point Over Fence Horse

Windemere Hunter Classic Top 10

Champion & Reserve Champion English Horse

RE-SET ARENA

✓ Y380	Hunter Hack, 18 & Under	85	20	20
N287	Non-Pro Walk/Trot Camas Prairie Stump Race	140		
N281	Non-Pro Camas Prairie Stump Race, ELIMINATIONS	140		
N281	Non-Pro Camas Prairie Stump Race	FINALS		
Y160	Saddle Seat Equitation, 18 & Under	85		
Y330	Saddle Seat Pleasure, 18 & Under	85		

Multi-Purpose Building

1:00 pm – 24 hours

At-Will Trail Practice

Thursday, November 5

Proudly sponsored by The Shepherd Family

		Pre Entry	Equip/ Cattle	Optional NSBA
John Justin Arena				
7:30 am				
Y190	Reining, 18 & Under	85		
O030	Weanling Colts	140		
O031	Yearling Colts	140		
O032	Two-Year-Old Stallions	140		
O033	Three-Year-Old Stallions	140		
O034	Aged Stallions	140		
O094	Foundation Pedigree Designation Halter, Stallions	140		
O035	Performance Halter Stallions	140		
O086	Most Colorful at Halter	140		
✓ N660	Non-Pro Ranch Rail Pleasure	140		20
O434	Stallion Service Auction Yearling Longe Line - NEW!	150		
✓ O554	Junior Ranch Riding	140		20
✓ N129	Novice Non-Pro Hunter Under Saddle	105		20
O542	Senior Ranch Reining	140		
Champion & Reserve Champion Western Horse				
R5	ApRHA Non-Pro Reining Derby			
O423	Men's Western Pleasure	140		
R7	ApRHA Non-Pro Reining Maturity			
N119	Novice Non-Pro Hunt Seat Equitation	105		
R1	ApRHA Reining Futurity			
Will Rogers Coliseum				
7:30 am				
Y309	Walk/Trot Trail, 10 & Under	85	40	



Congratulations **TOP 10**

**Celebrate your
success!**

25%
off

ad rates
in Jan.
2021
Appaloosa
Journal

Y809	Walk/Trot Trail, 11-18	85	40	
✓ Y605	Novice Trail, 18 & Under	85	40	20
✓ Y292	Trail, 14-18	85	40	20
✓ Y291	Trail, 13 & Under	85	40	20

RE-SET ARENA

✓ Y660	Ranch Rail Pleasure, 18 & Under	85		20
O290	Figure 8 Stake Race	140		
N297	Non-Pro Walk/Trot Figure 8 Stake Race	140		
N290	Non-Pro Figure 8 Stake Race	140		
O270	Keyhole Race	140		
N277	Non-Pro Walk/Trot Keyhole Race	140		
N270	Non-Pro Keyhole Race	140		
	Champion & Reserve Champion Games Horse			
	Champion Non-Pro Games Horse			
Y117	Showmanship at Halter, 13 & Under	85		
Y118	Showmanship at Halter, 14-18	85		
Y600	Novice Showmanship at Halter, 18 & Under	85		
Y306	Showmanship at Halter, 10 & Under (walk/trot)	85		
Y130	Bareback Horsemanship, 18 & Under	85		

Friday, November 6

Proudly sponsored by Dal-Worth ApHC in Honor of Debbie Cruse

		Pre Entry	Equip/ Cattle	Optional NSBA
John Justin Arena				
7:30 am				
Y 690	Ranch Reining, 18 & Under	85		
✓ P36	ApPHA Color World Series Non-Pro/Youth Senior Hunter Under Saddle			
✓ P20	ApPHA Color World Series Yearling Longe Line, Hunter			
N690	Non-Pro Ranch Reining	140		
✓ P30	ApPHA Color World Series Two-Year Hunter Under Saddle			
✓ O555	Senior Ranch Riding	140		20
✓ N128	Masters Non-Pro Hunter Under Saddle	140		20
✓ O558	Junior Ranch Rail Pleasure	140		20
N118	Masters \$2500 Non-Pro Hunt Seat Equitation		105	
E10	\$25000 Champion of Champions Western Pleasure - NEW!	100		
O345	Freestyle Reining	140		
E11	\$2500 Champion of Champions Hunter Under Saddle - NEW!	100		
	High-Point & Reserve High-Point Masters Non-Pro			
	High-Point & Reserve High-Point Novice Non-Pro			
	High-Point & Reserve High-Point Walk/Trot Non-Pro			
✓ P41	ApPHA Color World Series Three-Year-Old Western Pleasure			
✓ P46	ApPHA Color World Series Non-Pro/Youth Senior Western Pleasure			

Will Rogers Coliseum

8:00 am				
G1	AGHA Camas Prairie Stump Race - ELIMINATIONS			
Y211	Camas Prairie Stump Race, 13 & Under- ELIMINATIONS	85		
Y212	Camas Prairie Stump Race, 14-18 – ELIMINATIONS	85		
Y314	Walk/Trot Camas Prairie Stump Race, 10 & Under	85		
G1	AGHA Camas Prairie Stump Race	FINALS		
Y211	Camas Prairie Stump Race, 13 & Under	FINALS		
Y212	Camas Prairie Stump Race, 14-18	FINALS		
✓ Y341	Western Pleasure, 13 & Under	85		20
✓ Y342	Western Pleasure, 14-18	85		20
Y308	Walk/Trot Western Pleasure, 10 & Under	85		
Y808	Walk/Trot Western Pleasure, 11-18	85		
✓ Y630	Novice Western Pleasure, 18 & Under	85		20
Y141	Western Horsemanship, 13 & Under	85		
Y142	Western Horsemanship, 14-18	85		
Y313	Walk/Trot Western Horsemanship, 10 & Under	85		
Y813	Walk/Trot Western Horsemanship, 11-18	85		
Y610	Novice Western Horsemanship, 18 & Under	85		
✓ Y270	Western Riding, 18 & Under	85		20
✓ Y680	Ranch Riding, 18 & Under	85		20

Multi-Purpose Building

1:00 pm -24 hours
At-Will Ranch Trail Practice

Saturday, November 7

Proudly sponsored by Total Refrigeration LLC

		Pre Entry	Equip/ Cattle	Optional NSBA
John Justin Arena				
7:30 am				
✓ Y670	Ranch Trail, 18 & Under	85	40	20
✓ O556	Junior Ranch Trail	140	40	20
✓ N670	Non-Pro Ranch Trail	140	40	20

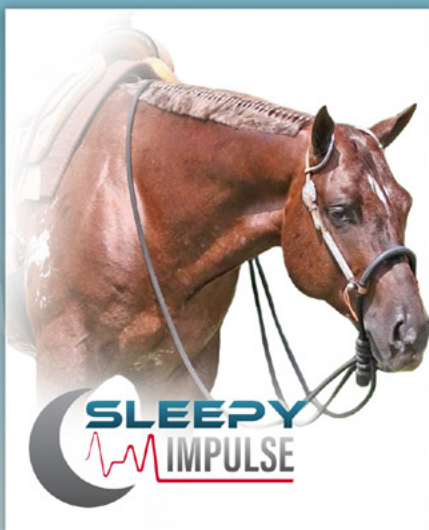
Breed S'more



PERFORMANCE
HORSES



Proud Sponsor of Champions of Champions



Come visit us at the World Show!

DRAWINGS FOR FREE BREEDINGS AND SMORES!!!

FOR BREEDING INFO:
WENDY JO MCCAIN 325-518-0698

✓ O557	Senior Ranch Trail	140	40	20
RE-SET ARENA				
✓ P31	ApPHA Color World Series Three-Year-Old Hunter Under Saddle			
✓ P45	ApPHA Color World Series Non-Pro/Youth Junior Western Pleasure			
N650	Non-Pro Ranch Horse Conformation	140		
✓ P21	ApPHA Color World Series Yearling Longe Line, Western			
O552	Open Ranch Horse Conformation	140		
Y650	Youth Ranch Horse Conformation	85		
Champion Non-Pro Ranch Horse				
Champion & Reserve Champion Ranch Horse				
✓ P35	ApPHA Color World Series Non-Pro/Youth Junior Hunter Under Saddle			
High-Point & Reserve High-Point Non-Pro				
Overall High-Point Exhibitor				
Non-Pro Sportsmanship Award				
All-Around Non-Pro				
World Show Leading Breeder				
World's Best & Reserve World's Best Appaloosa				
✓ P40	ApPHA Color World Series Two-Year-Old Western Pleasure			

Will Rogers Coliseum

8:00 am

G2	AGHA Nez Perce Stake Race - ELIMINATIONS			
Y315	Walk/Trot Nez Perce Stake Race, 10 & Under	85		
Y221	Nez Perce Stake Race, 13 & Under- ELIMINATIONS	85		
Y222	Nez Perce Stake Race, 14-18- ELIMINATIONS	85		
G2	Nez Perce Stake Race	FINALS		
Y221	Nez Perce Stake Race, 13 & Under	FINALS		
Y222	Nez Perce Stake Race, 14-18	FINALS		
✓ Y530	Hunter in Hand, Mares	85		20
✓ Y540	Hunter in Hand, Geldings	85		20
Y300	Lead line, 6 & Under	85		
Y124	English Showmanship, 13 & Under	85		
Y125	English Showmanship, 14-18	85		
✓ Y321	Hunter Under Saddle, 13 & Under	85		20
✓ Y322	Hunter Under Saddle, 14-18	85		20
Y307	Walk/Trot Hunter Under Saddle, 10 & Under	85		
Y807	Walk/Trot Hunter Under Saddle, 11-18	85		
✓ Y640	Novice Hunter Under Saddle, 18 & Under	85		20
Y390	Heritage, 18 & Under	85		

Sunday, November 8

Proudly sponsored by Shaun & Alicia Fleming

		Pre Entry	Equip/ Cattle	Optional NSBA
Will Rogers Coliseum				
7:30 am				
Y317	Walk/Trot Figure Eight Stake Race, 10 & Under	85		
Y371	Figure Eight Stake Race, 13 & Under	85		
Y372	Figure Eight Stake Race, 14-18	85		
Y316	Walk/Trot Keyhole Race, 10 & Under	85		
Y261	Keyhole Race, 13 & Under	85		
Y262	Keyhole Race, 14-18	85		
Y151	Hunt Seat Equitation, 13 & Under	85		
Y152	Hunt Seat Equitation, 14-18	85		
Y311	Walk/Trot Hunt Seat Equitation, 10 & Under	85		
Y811	Walk/Trot Hunt Seat Equitation, 11-18	85		
Y620	Novice Hunt Seat Equitation, 18 & Under	85		
Zippos Sensation High-Point Youth Over Fences Exhibitor				
High-Point 18 & Under Equitation Rider				
Champion Youth Ranch Horse				
High-Point & Reserve High Point Walk/Trot Youth, 10 & Under				
High-Point & Reserve High Point Walk/Trot Youth, 11-18				
High-Point & Reserve High Point Novice Youth, 18 & Under				
High-Point & Reserve High Point Youth, 13 & Under				
High-Point & Reserve High Point Youth, 14 – 18				
High-Point Youth Games Exhibitor				
Randy Cutbirth Memorial – High Scoring Youth Reiner				
Youth Sportsmanship Award				
Overall High-Point Youth				
All-Around Youth				