

2019

WORLD

CHAMPIONSHIP APPALOOSA SHOW



**October 25 -
November 2, 2019**

**Will Rogers Memorial Center
Fort Worth, Texas**



World Show Deadlines

PRE-ENTRY DEADLINE

September 26, 2019

(for entries submitted in writing using official entry forms)

October 2, 2019

(for entries submitted using the online entry system)

Entries received after these dates will be accepted until 6 p.m. the day prior to the class at post-entry fees.

STALL RESERVATION DEADLINE

September 26, 2019

Reservations received after this deadline will be accepted at post-reservation fees.

RV RESERVATION DEADLINE

September 27, 2019

For best pricing and space availability



Discover the Silver Artistry

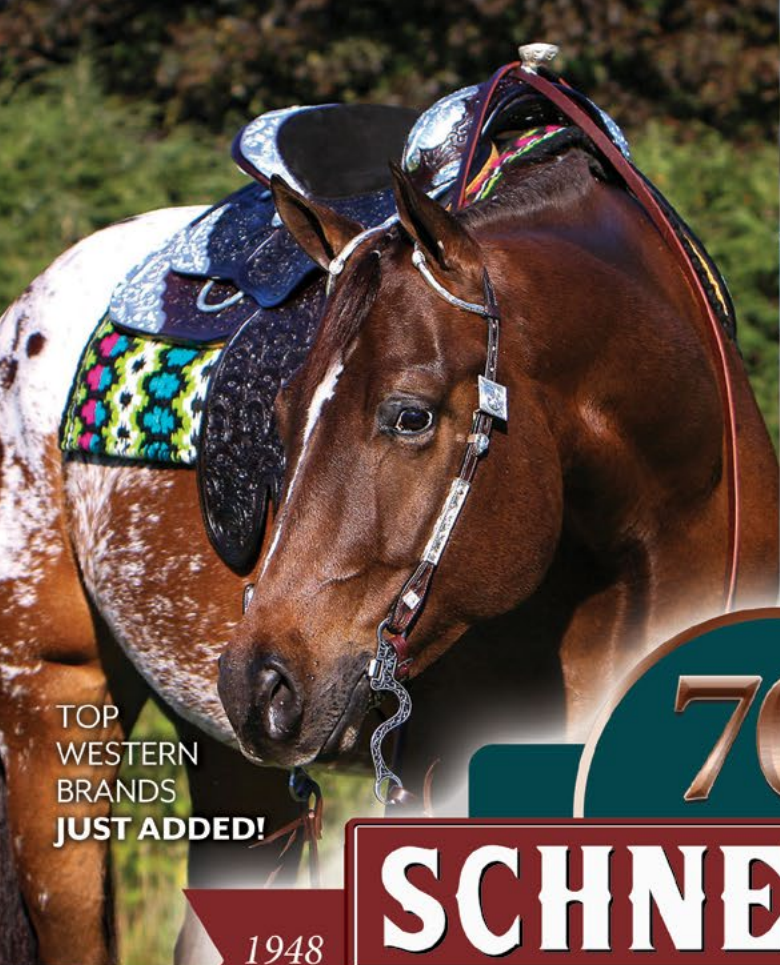


MONTANA[®]
SILVERSMITHS

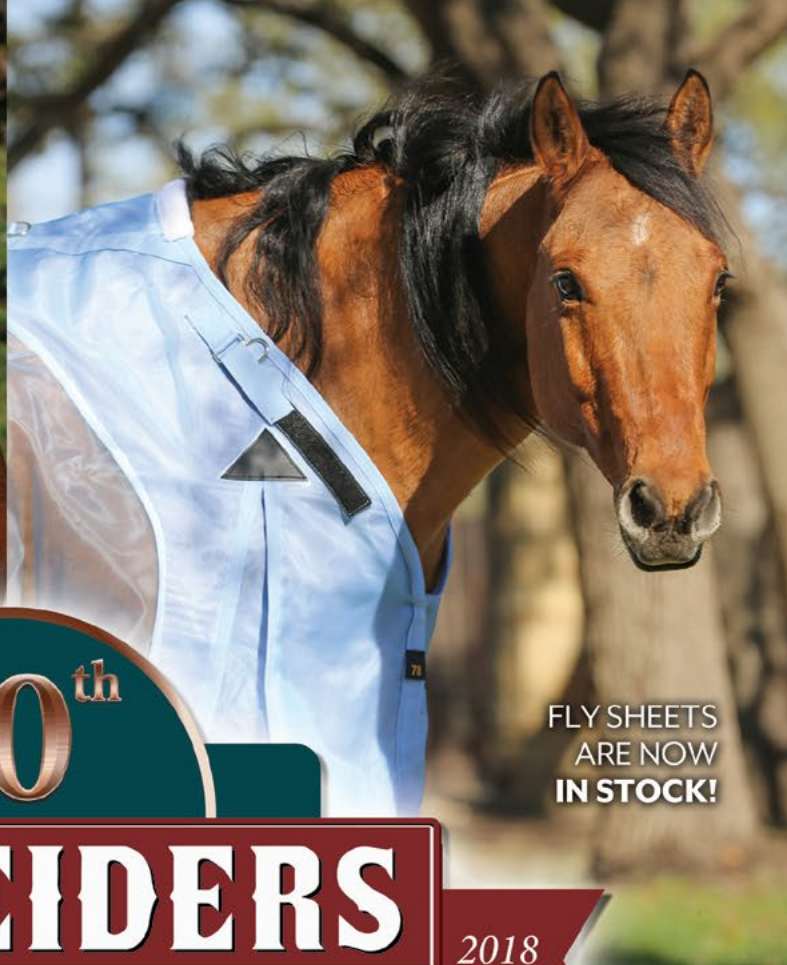
www.montanasilversmiths.com | 800-548-4511 | Follow us [f](#) [i](#) [t](#) [e](#)

TABLE OF CONTENTS

ADMINISTRATIVE CHARGE.....	14	GENERAL RULES & REGULATIONS.....	10
APPALOOSA FOUNDATION PAID PRACTICE.....	35	GOLF CARTS	15, 24
AWARDS	25	HEALTH INSPECTION.....	14
BARN RULES	25	HERITAGE.....	33
BEDDING	24	HORSE SHOW OFFICE.....	14
CERTIFICATE OF REGISTRATION	14	HOTELS.....	6
CHECK-IN PROCEDURES	16	INHUMANE TREATMENT.....	20
CONTACT INFORMATION	37	INSPECTION STATION.....	16
COMMERCIAL EXHIBIT INFORMATION.....	25	LAMENESS	20
CLASS PATTERNS.....	18	NSBA DUAL-APPROVED CLASSES.....	33
CLASS PROCEDURES	18	OFFICIAL VETERINARIAN	18
DISQUALIFICATION	18	OWNERSHIP & MEMBERSHIP	12
DOGS/PETS.....	25	PADDOCK PROCEDURE.....	18
DRUG TESTING.....	16	PARKING.....	24
EQUIPMENT JUDGE.....	18	PAYMENT PROCEDURES	14
ELIGIBILITY	10	RECREATIONAL VEHICLES	25
ELIMINATION, FINALS AND SCORING	25	SCRATCHES/REFUNDS	16
ENTRIES	12	SHOW OFFICIALS.....	43
ENTRY AGREEMENT	10	STALLION SERVICE AUCTION INCENTIVE CLASSES.....	35
EVENT PROGRAM	25	STALL RESERVATIONS.....	20
EXHIBITOR NUMBERS.....	14	SUBSTITUTIONS	16
FARRIER	25	TEAM ROPING.....	33
FEED.....	24	WINDEMERE HUNTER CLASSIC	35
FORFEITURE OF STALL LOCATION	26	WORKING ORDER	18
FREESTYLE REINING.....	33	YEARLING LONGE LINE	33



TOP
WESTERN
BRANDS
JUST ADDED!



FLY SHEETS
ARE NOW
IN STOCK!

1948

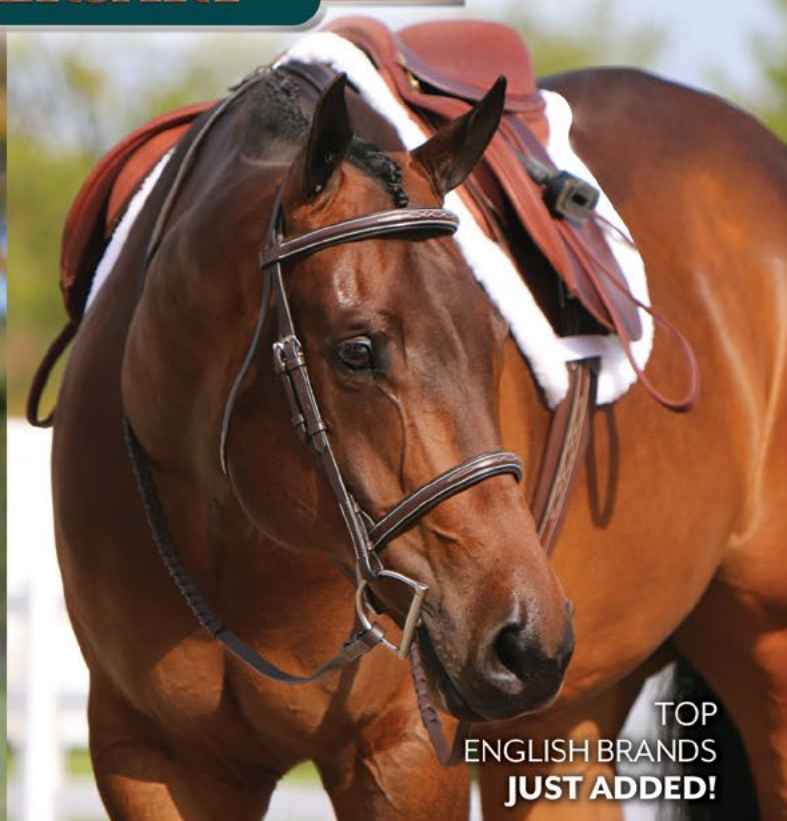
70th
SCHNEIDERS

2018

ANNIVERSARY



NEW
NATURALSHIELD™
INFUSED
FLY SHEETS



TOP
ENGLISH BRANDS
JUST ADDED!

OVER **500 NEW** PRODUCTS JUST ADDED @ **SSTACK.COM**
FREE SHIPPING ON ORDERS OVER \$100

NEED a place to stay?

These hotels are waiting to serve participants and spectators!

PREFERRED ACCOMMODATIONS

Fort Worth, Texas

COURTYARD FORT WORTH UNIVERSITY DRIVE

3150 Riverfront Drive

(800) 321-2211 or (817) 335-1300

- Less than 5 minutes from Will Rogers Complex
- Complimentary breakfast for Appaloosa Show attendees
- Pool
- Free high-speed internet access
- Spacious complimentary parking

\$119/NIGHT PLUS APPLICABLE TAXES

Reserve by 10/4/19

HOLIDAY INN EXPRESS & SUITES

1111 W Lancaster Avenue

(817) 698-9595 or (866) 551-9747

- Less than 5 minutes from Will Rogers Complex
- Indoor pool
- Free high-speed internet access
- Complimentary hot breakfast
- Complimentary shuttle transportation (3-mile radius)
- Complimentary parking

\$109/NIGHT PLUS APPLICABLE TAXES (KING)

\$114/NIGHT PLUS APPLICABLE TAXES (2 QUEENS)

Reserve by 9/23/19

RESIDENCE INN MARRIOTT

2500 Museum Way

(817) 885-8250

- Separate living area with pull-out sofa
- Outdoor heated pool
- Laundry facility on-site
- 24-hour fitness center
- \$8/day self-parking fee

\$119/NIGHT PLUS APPLICABLE TAXES

Reserve by 9/26/19

SPRINGHILL SUITES MARRIOTT

3250 Lovell Avenue

(888) 287-9400

- Less than 5 minutes from Will Rogers Complex
- Complimentary breakfast
- Free high-speed internet access
- Complimentary parking

\$119/NIGHT PLUS APPLICABLE TAXES

Reserve by 10/4/19

FORT WORTH FAIRFIELD INN & SUITES

1505 South University Drive

(817) 335-2000

- Less than five minutes from WRMC
- Within walking distance of more than 15 restaurants
- Complimentary deluxe hot breakfast
- Guest Laundry
- Free internet, exercise room, indoor pool, Jacuzzi

\$114/NIGHT PLUS APPLICABLE TAXES (KING)

\$99/NIGHT PLUS APPLICABLE TAXES (2 QUEENS)

Reserve by 9/24/19

TOWNEPLACE SUITES MARRIOTT

805 E Belknap Street

(817) 332-6300

- Complimentary on-site parking
- Complimentary shuttle service Mon-Fri 9a-8p within 5 mile radius
- Outdoor heated pool
- Laundry facility on-site
- 24-hour fitness center

\$95/NIGHT PLUS APPLICABLE TAXES

Reserve by 9/26/19



PROUDLY SUPPORTING ApHC



★ World Championship Appaloosa Youth Show ★

ApHC
Official Saddle Partner

Saddles & Tack | Awards | Leather Goods & More!



Put Your Seat in an Elite!

Handmade. Cowboy Tested. Cowgirl Approved.

Design: www.silverbuckleservices.com © 2019, photo courtesy Elite Custom Saddles



Now in Bee Branch, Arkansas!

JJ: (940) 536-8988

Jon: (501) 912-9262

EliteCustomSaddles.com

Personal Safety & Security Reminders



The ApHC wants to remind everyone to have a safe and enjoyable show.

Many of you will be traveling long distances through unfamiliar places, and it pays to think ahead. The following are things that you may already know, but now is a great time to read over them again and discuss safety with your family. It is also a great time to check the security measures you use to protect your belongings. Do what you can now to make yourself and your family an unattractive target to thieves and criminals.

Be aware of your surroundings. If something doesn't look or feel right, trust your instincts.

Park and walk only in well-lit areas. Travel in pairs, especially at night.

Children should be with a responsible adult at all times.

Look for a hotel with 24-hour on-site security.

Don't carry large amounts of cash. Think about replaceable travelers' checks or debit cards with fraud protection instead. Keep a list of credit card and bank contact numbers in a separate place that you can use to cancel cards or accounts if necessary. Have a back up plan in case your purse or wallet is stolen.

Purses, wallets, GPS devices, briefcases, bags, laptop computers or anything that looks valuable should never be left in a vehicle or unattended area.

Spare wheels, tires and even whole trailers can be targeted by thieves. Locking the hitch on your trailer and the spare on your truck will make you a less attractive target.

Lock your tack stall. Even if you're only going around the corner or into another stall, always lock up.

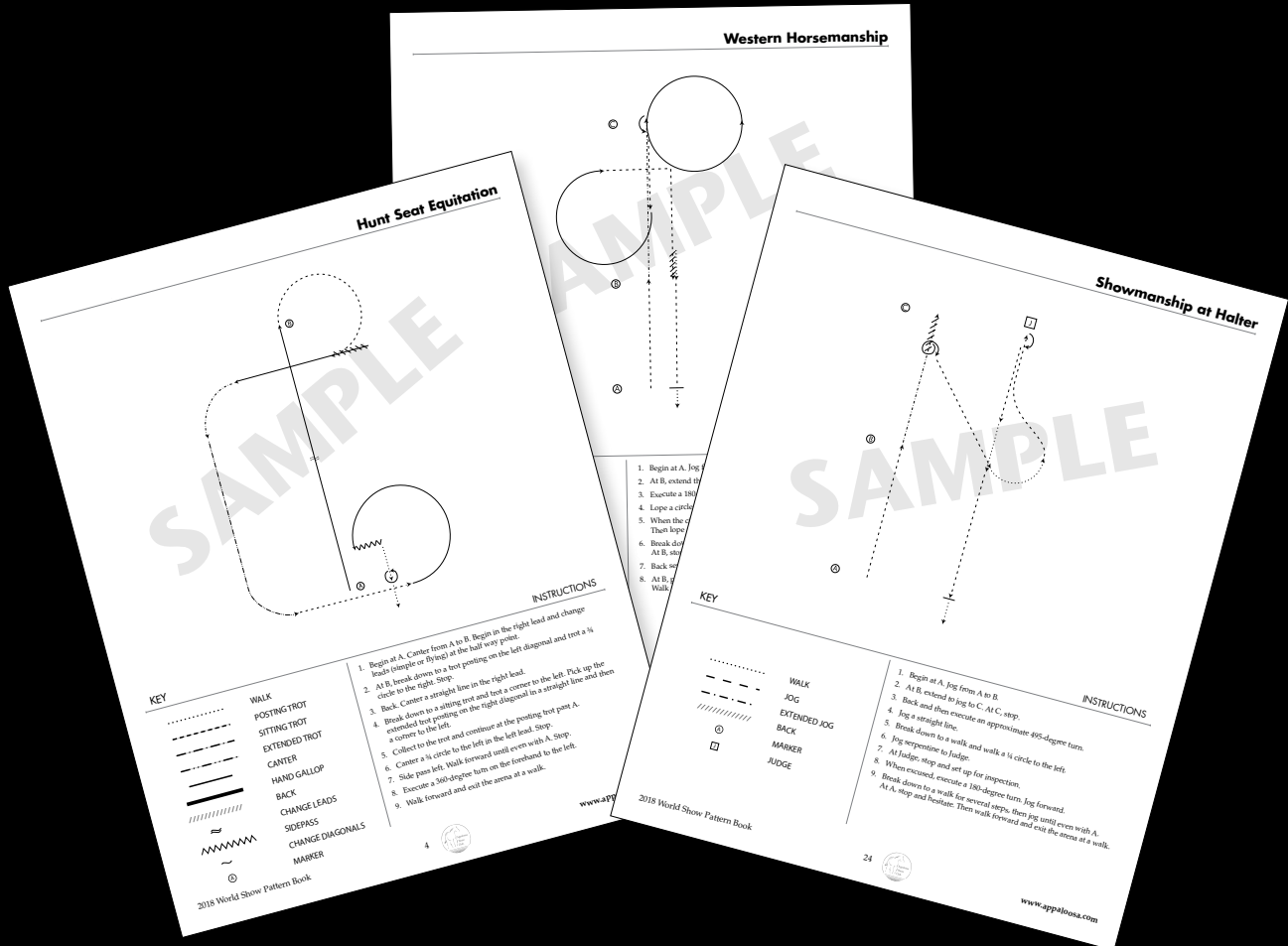
Label your cell phone, camera, cases, tack carriers, etc.
Found items are returned more quickly if the owner can be easily identified.

If you can, leave your dogs at home. If you bring a dog, keep them on a leash or penned up. Please make sure they are wearing tags with a local or cell number where you can be reached.

Put a label on your horse's stall with your cell, hotel, and local contact information so that you can be reached in the case of a horse emergency.

If you see a horse in distress and the owner is not around, contact the show office or the stall office. The Stall Office is open 24 hours a day.

Ride the Pattern



Thursday, October 24

1 – 4 pm

John Justin Arena

Free to spectators

Get a leg up on the competition by attending this seminar where a World Show judge will talk through select horsemanship, showmanship and equitation patterns with a demo rider, offering opinions and recommendations for pattern improvement. A brief time for exhibitor questions for the judge may be offered at the conclusion of the seminar if time allows.

Event sponsored by the Exhibitor Show Advisory Committee

GENERAL RULES & REGULATIONS

The World Show will be run in compliance with the 2019 *Official Handbook of the Appaloosa Horse Club*, except as otherwise stated in the following pages.

The management reserves the right to decline any entry before or during the show without liability for compensation for reasons such as non-sufficient fund checks, stopped payment on checks, poor sportsmanship, inhumane treatment of horses, or harassment of judges, officials, secretaries, ring stewards and/or any other employee of the show.

The show management reserves the right to change the show schedule at any time.

All horses entered in the show must be registered with the ApHC, be eligible to compete and must purchase a stall.

All horses not officially entered in the show and assisting in, but not limited to, cutting or team roping must be registered with the ApHC and must purchase a stall.

All horses on the show grounds must purchase a stall and must show current health papers and proof of negative Coggins in the show office. See HEALTH INSPECTION for additional details.

Exhibitors will be disqualified for using a horse to assist in any class that is not registered with the ApHC or using a horse with a N (non-characteristic) Certificate of Registration and which horse has not been issued a performance permit.

All entrants must provide information on lodging accommodations in Fort Worth in order to pick up the exhibitor packet for each horse. Please see SHOW OFFICE for more details.

ENTRY AGREEMENT

Release, Assumption of Risk, Waiver and Indemnification

This statement waives important legal rights. Read it carefully before signing any entry forms and/or before participating in any class as an owner and any of his/her representatives, authorized agent, trainer, lessee, rider, driver and/or handler.

I AGREE in consideration for my participation in the World Championship Appaloosa Show ("Competition") to the following:

I AGREE that I choose to participate voluntarily in the Competition with my horse(s), as a rider, driver, handler, lessee, owner, agent, coach, trainer, or as parent or guardian of a youth exhibitor. I am fully aware and acknowledge that horse sports and the Competition involve inherent dangerous risks of accident, loss, and serious bodily injury including broken bones, head injuries, trauma, pain, suffering, or death ("Harm").

I AGREE to release the Appaloosa Horse Club, ("ApHC"), the Competition, officials, officers, directors, employees, specialty associations, independent contractors, agents, personnel, volunteers, the Will Rogers Memorial Center, the Fort Worth Convention & Visitors Bureau, the City of Fort Worth, trade show vendors, sponsors and/or other sponsoring organizations, if any, from all claims for money damages or otherwise for any Harm to me, my horse(s) and/or my property and for any Harm caused by me, my horse(s) and/or my property to others, even if the Harm resulted, directly or indirectly, from the negligence of the Appaloosa Horse Club, or the Competition.

I AGREE to assume all liability and responsibility for any accidents, injury or damages sustained or caused by myself, my helpers, my stock or my equipment and I AGREE to expressly assume all risks of Harm to me or my horse(s), including Harm resulting from the negligence of the Appaloosa Horse Club, ("ApHC"), the Competition, officials, officers, directors, employees, independent contractors, agents, personnel, volunteers, the Will Rogers Memorial Center, the

Fort Worth Convention & Visitors Bureau, the City of Fort Worth, trade show vendors, sponsors and/or other sponsoring organizations, if any.

I AGREE to indemnify (that is, to pay any losses, damages, or costs incurred by) the Appaloosa Horse Club, ("ApHC"), the Competition, officials, officers, directors, employees, independent contractors, agents, personnel, volunteers, the Will Rogers Memorial Center, the Fort Worth Convention & Visitors Bureau, the City of Fort Worth, trade show vendors, sponsors and/or other sponsoring organizations, if any, and to hold them harmless with respect to claims for Harm to me or my horse(s), and for the claims, demands, cause of accident, cost of charges and expenses of every kind and nature which may be incurred by reason of any accident, injury, or damage to person or property caused by ownerships, exhibition, or custody or control of any animal exhibited, made by others for any Harm caused by me, my horse(s) and/or my property at the Competition.

I have read the Appaloosa Horse Club rules about protective equipment, including protective headgear, and I understand that I am entitled to wear protective equipment without penalty, and I acknowledge that the Appaloosa Horse Club, strongly encourages me to do so while WARNING that no protective equipment can guard against all injuries. I further understand that any minor child entered in the Competition is required to wear protective headgear during games classes.

I AGREE to furnish a health certificate for each horse entered, upon request of the show management and understand that any horse that develops a contagious disease during the show will be immediately quarantined and/or removed from the grounds under the instructions of the Show Veterinarian or State Veterinarian.

I AGREE that the ApHC has the sole right to control, sell, rent, supervise or give away (or to assign others the right to do so) the exclusive rights to photograph, broadcast, televise, reproduce, transmit and disseminate all or part of this event. I authorize the ApHC to make use of any photographs, films or video taken of the horses and exhibitors entered, while on the grounds or in transit between the stabling facility and the event site, in any way they see fit in the promotion of the Competition or the ApHC. No such advertising or promotional rights shall include the right to use a participant's name or likeness in a manner that implies endorsement of any company, product category or service.

If I am a parent or guardian of a youth exhibitor, I consent to the child's participation and AGREE to all of the above provisions and AGREE to assume all of the obligations of this Release on the child's behalf.

I AGREE that the "ApHC" and "Competition" as used above includes all of the officials, officers, directors, employees, agents, personnel, volunteers and affiliated organizations.

I represent that I have the requisite training, coaching and abilities to safely compete in this competition. By signing the entry blank, I AGREE to be bound by all applicable Appaloosa Horse Club rules and all terms and provisions of the entry blank. In the event of failure to sign an entry form, the first entry in a class will be deemed acceptance of said rules.

ELIGIBILITY

A horse will be eligible to compete in each open class in which it has earned the minimum number of points prescribed for that class in the 2019 *Official Handbook of the ApHC*, if it has been nominated to participate in that class in accordance with the regional club qualifying system and/or if it was a 2018 World Show champion in that class.

Non-pros will be eligible to compete in each non-pro class, except

DISH: YOUR PREMIER DESTINATION FOR EQUESTRIAN SPORTS AND LIFESTYLE SHOWS

DISH is the only nationwide provider of RIDE TV

Expect More from your TV Provider.

\$59⁹⁹
/mo.
plus taxes

Includes DVR and RIDE TV



INCLUDES

190 of Your Favorite Channels



Premium Channels for 3 Months



After 3 months, you will be billed \$30/mo. unless you call to cancel.
Offer subject to change based on premium channel availability.

2-Year TV
Price Guarantee



FREE
Voice Remote



FREE
HD for Life®

All offers require credit qualification, 2-year commitment with early fee, and eAutoPay. Prices include Hopper Duo for qualifying customers. Hopper, Hopper w/Sling or Hopper 3 \$5/mo. more. Upfront fees may apply based on credit qualification. Fees may apply for additional TVs: Hopper \$15/mo., Joey \$15/mo., Super Joey \$10/mo.



Watch RIDE TV on DISH Channel 248
Proud supporter of the Appaloosa Horse Club

CALL TODAY

1-888-403-9549

or visit www.dish.com/ahc



those listed under "Non-Qualifying Classes", if they have earned the minimum number of points prescribed for that class in the 2019 *Official Handbook of the ApHC*, if they have been nominated to participate in that class in accordance with the regional club qualifying system and/or if the non-pro was a 2018 World Show champion in that class.

Complete rules regarding World Show qualifying in open and non-pro classes are contained in the *Official Handbook of the ApHC*.

All points considered for eligibility in this show must have been earned between September 1, 2018 and August 31, 2019 at ApHC-approved shows and only official ApHC records will be used as the basis for determining eligibility.

ApHC national points will not be earned by participation in the World Championship Show.

NON-QUALIFYING CLASSES

Weanling halter classes, ladies' and men's western pleasure, two-year-old western pleasure, two-year-old hunter under saddle, free-style reining, junior & senior ranch reining, green western pleasure, green western riding, green hunter under saddle, green trail, yearling hunter in hand (fillies, geldings, and colts), weanlings and yearlings shown in non-pro hunter in hand classes (mares, stallions, geldings), yearling longe line and non-pro yearling longe line (western and hunter), non-pro walk/trot classes, non-pro ranch classes (riding, trail, rail pleasure, reining), non-pro boxing, non-pro bareback horsemanship and foundation pedigree designation halter (mares, stallions, geldings) do not require qualification.

OWNERSHIP & MEMBERSHIP

Any horse exhibited at the show must be registered in the owner's name at the time of showing and must be entered as such.

All owners and exhibitors of horses being exhibited in the show must be current members in good standing with the ApHC. If purchase of an ApHC membership is necessary, membership fees may accompany the entries or memberships can be purchased at the show. An ApHC membership application is available at www.appaloosa.com. Youth may obtain a youth membership to fulfill the ApHC membership requirement.

Exhibitors and owners must also be members of an ApHC regional club and may be required to show proof of such membership.

In order to compete in the non-pro classes, the non-pro or member of their immediate family (per rule 900.J) must own the horse as evidenced by ApHC records prior to the first day of the show. Therefore, all transfers must be completed by the close of business on October 24, 2019. The competing non-pro must be enrolled in the non-pro program and eligible according to non-pro rules contained in the *Official Handbook of the ApHC*. **Unrelated non-pros may not show the same horse in non-pro division classes at the World or National Championship Appaloosa Shows.**

NOTE: The original Certificate of Registration must be presented in the show office at the show to obtain your back numbers.

ENTRIES

Entries must be submitted electronically via the ApHC on-line entry program or in writing. If submitted in writing, entries must be made on printed entry forms furnished by the ApHC (copies of printed forms accepted), signed by the proper parties and accompanied by all entry fees, equipment charges, cattle charges and a completed W-9 form for the first listed owner on the Certificate of Registration. Entries will not be accepted by telephone.

Exhibitors are responsible for any errors on their entry forms.

Entries lacking sufficient information or not accompanied by

all required fees will not be accepted.

Changes to entries must be submitted in writing. Changes to entries will not be accepted by telephone. The ApHC is not responsible for lost or late entries. The ApHC recommends using the online entry system or certified/registered mail as these options provide confirmation that your entries were received.

The IRS requires the ApHC to obtain the correct taxpayer identification number (TIN) for persons for whom we have to file an information return (i.e. 1099 Miscellaneous for premium payback). This form must be completed by the owner or in the case of multiple owners, by the first listed current owner. If the correct TIN is not provided, subsequent payments can be subject to backup withholding per IRS regulations. Premium checks will not be issued until the ApHC has a W-9 on file for all persons receiving these checks. You are required to complete a W-9 with the appropriate certifications and submit it with your entry. This information must be provided to the ApHC regardless of the age of the owner. Your exhibitor packet will be held if this form is not submitted with your entry. A W-9 form is available on the ApHC web site.

The social security number listed on the W-9 should be that of the owner, or in the case of multiple owners, that of the first listed current owner on the Certificate of Registration. No other social security number is acceptable. International residents must complete IRS Form #W-8ECI or the ApHC must deduct 30% of any monies earned. Social security numbers must be provided for individuals. Taxpayer identification numbers will not be accepted in lieu of a social security number for individual owners. This information must be provided to the ApHC regardless of the age of the owner.

Exhibitors are encouraged to use the ApHC on-line entry system to process World Show entries. Entrants will receive immediate confirmation of entries processed. The ApHC recommends that entries sent by mail utilize a certified mail or other guaranteed delivery service. Entries may be submitted by fax - exhibitors are responsible for ensuring that faxed entries are received by the ApHC.

Entries sent by Federal Express, UPS, certified mail—return receipt or Express Mail should be mailed to:

Appaloosa Horse Club World Show

2720 W Pullman Road

Moscow, Idaho 83843

Entries may be faxed to (208) 882-8150.

Exhibitors are responsible for verifying that their entries have been received in the ApHC office. If you fax entries or stall reservations, DO NOT send originals in the mail as this will likely result in duplicate charges if paying by credit card. If you fax entries or stall reservations, please allow four (4) hours of processing time before calling the ApHC to determine if your entries and/or stall reservations have been received. **Faxed copies of checks are not considered payment and entries and/or stall reservations will not be accepted until actual payment is received.** Appaloosa Horse Club switchboard hours are Monday through Friday, 8 a.m. – 4 p.m. PDT.

PRE-ENTRY DEADLINE

September 26 (for entries submitted in writing using official entry forms)

October 2 (for entries submitted using the online entry system)

All entries must be in the ApHC office by the appropriate pre-entry deadline listed above in order to receive pre-entry prices and to be included in the Official Program. No supplement will be printed.

Entries will be accepted after this date/time with a post-entry fee of 1 1/2 times the pre-entry class fee. **NO EXCEPTIONS WILL BE MADE.** Post-entry fees are not assessed for NSBA entries, equip-



The Official Trailer and Dealer of **THE APPALOOSA HORSE CLUB**



Good Luck To All The World Show Exhibitors!

Acres and acres of new and pre-owned trailers! Top dollar for your clean trade. Long-term, low, fixed-rate financing available.

WE PROMISE YOU WILL SAVE BIG!



Gary and Tammy Raak
8448 Hwy 377 N. Pilot Point, TX 76258
(855) 585-6548
TwinCitiesSouthTrailers.com

ment charges or cattle fees in working cow horse, boxing or roping. Post entry fees WILL BE assessed to cattle fees in cutting classes. Post entries must be made by 6:00 p.m. the day prior to when the class to be entered is scheduled.

Entries not processed using the on-line entry system or not received in the ApHC office by October 4 must be taken to the show, not mailed to the ApHC.

ADMINISTRATIVE CHARGE

There will be a \$50 one-time administrative charge, which includes drug-testing charges for each horse entered in the World Show. This fee is assessed only one time per horse regardless of the number of classes in which the horse is entered. For example, if a horse is entered in non-pro and open classes, only \$50 is due. For further clarification, see DRUG TESTING.

PAYMENT PROCEDURES

All entries must be made payable to the ApHC in U.S. funds drawn on a U.S. bank. Payment may be made in the form of personal checks, Visa, MasterCard, Discover or money order. The ApHC does not accept American Express as a form of payment.

If you are paying by debit or credit card, you are advised to contact your bank or credit card issuer in advance about charges in excess of \$200 (or your bank card daily limit) to avoid the charge being declined for security reasons. **Cards declined by the bank will be treated as insufficient funds and may result in your horse being excluded from the program and/or late stall penalties or post entry fees being assessed.**

Any check returned to the ApHC office due to insufficient funds will require certified funds and payment of a returned check charge in order for entries to be processed. If the customer has not paid all charges for returned checks prior to the World Show, the agent/owner must bring certified funds to the show office for the entries to be processed.

The ApHC shall collect funds for entry and/or stall fees in which a credit card was declined or in which a check has been returned due to insufficient funds before processing entries or stall reservations. The date at which funds are secured for declined credit cards or insufficient funds checks will be acknowledged as the date the entries and/or stalls are received and processed. Post-entry fees and late stall charges may be assessed to entries for which funds have been declined and which have not been cleared prior to the pre-entry deadline.

HORSE SHOW OFFICE

The show office is located adjacent to the John Justin Arena. The show office will be open October 24 from 8 a.m. to 6 p.m. and daily thereafter from 7 a.m. until the last ApHC class enters the arena for judging or until 9:00 p.m. (whichever is earlier). The show office will not close before 6:00 p.m. These are the only times that exhibitor packets can be picked up, class additions or scratches can be made or horse or exhibitor changes can be processed.

Post entries must be made by 6 p.m. the day prior to when the class is scheduled to be held. If exhibitor changes in open classes or horse changes in non-pro classes are necessary, such changes must be reported to the show office in writing prior to the class entering the arena.

The show office will NOT cash any checks.

To pick up your exhibitor packet that includes your exhibitor number, you must present:

1. The horse's **original** Certificate of Registration (PHOTOCOPIES WILL NOT BE ACCEPTED),
2. Your current (within 30 days) health certificate (**dated on or after September 25, 2019**),
3. Your current (within 12 months) proof of negative Coggins by a licensed veterinarian (**dated on or after October 25, 2018**),
4. Proof of NSBA membership if competing for NSBA dual-approved awards.
5. Your stall ledger given to you upon checking in at the stall office (only if your horse is listed as "Not Stalled" on your confirmation letter).
6. Properly completed lodging form.

CERTIFICATE OF REGISTRATION

Original Certificates of Registration must be presented to the Show Office when picking up exhibitor packets for each horse and then to the Inspection Station prior to showing. PHOTOCOPIES WILL NOT BE ACCEPTED!

It is not the responsibility of the ApHC to provide original Certificates of Registration. You must pick up your exhibitor packet before going to the inspection station.

Horses that have not been inspected by the Official Inspector will not be allowed to show.

HEALTH INSPECTION

All horses (including weanlings) must be accompanied by a current 30 day health certificate (dated on or after **September 25, 2019**) as well as a current, within 12 months, proof of negative Coggins (dated on or after **October 25, 2018**), and administered by a licensed accredited veterinarian showing positive identification of the horse, the horse's temperature and the name and address of the laboratory performing the tests. This documentation **MUST** be presented in the show office for every horse on the show grounds.

Make sure the veterinarian uses registered names on Coggins and health certificates rather than "barn names." Coggins and health papers, as well as the horse's ORIGINAL Certificate of Registration must be presented at the show office prior to receiving your exhibitor number. If current Coggins and health papers and the original Certificate of Registration are not available, the horse will not be allowed to compete and entry and stall fees will be forfeited. Horses are subject to quarantine until current Coggins and health papers are available.

All horses are subject to inspection by the show veterinarian or State Veterinarian if suspected of harboring a communicable disease. All horses must be serviceably sound.

The attending show veterinarian recommends all horses be vaccinated for tetanus, influenza, rhinopneumonitis, EHV-1 and West Nile Virus.

EXHIBITOR NUMBERS

In all ApHC classes, one exhibitor number will be assigned to each horse. This number will be used for all classes in which the horse is entered. If the horse is entered in more than one division (open & non-pro or ApHC & a specialty association class) one exhibitor number will be issued.

In addition to ApHC classes at the World Show, there are various specialty associations conducting classes. In cases in which the horse is already entered in ApHC classes at the World Show, the horse should be shown in specialty association classes using the exhibitor number issued by the ApHC. In cases in which the horse is not cross-

**Golf Cars and UTVs for the Ranch, Neighborhood, or Worksite.
QUALITY VEHICLES THAT GET THE JOB DONE!**



The Official Golf Car Dealership of APHC
Golf Car Rentals Available

Pre-Order ahead of time for discounted rates!



Metro offers the best selection of off-road vehicles. Whether you have a job to do or just for fun, we have an unbeatable lineup of premium golf car and UTV brands all backed by our award winning service department.



Email Johnny at johnny@metrogolfcars.com

4063 South Freeway, Fort Worth, Texas 76110

817-921-5491

www.metrogolfcars.com

entered in ApHC classes at the show, exhibitors must pay a one-time drug testing fee of \$50/horse and get their exhibitor numbers from the ApHC show office. All exhibitor numbers **MUST** be stamped by the official World Show inspector and must be displayed according to rule 711.M. Please see INSPECTION STATION for complete instructions.

In order to receive a back number, all other show requirements must be fulfilled including presentation of the horse's original Certificate of Registration, proof of negative Coggins, health certificate and the horse must be stalled. In addition, the owner and exhibitor must be current ApHC members in good standing and must be members of an ApHC regional club.

After picking up your exhibitor number, you must have your horse inspected. Please see INSPECTION STATION for complete instructions.

To ensure that your placings are accurate, it is essential that the correct exhibitor number is used for all classes and displayed in the correct manner (see rule 711.M of the *Official Handbook of the ApHC* for complete rules for each class). Failure by exhibitor to display the correct number and in a visible manner while being judged shall result in disqualification from the class.

CHECK-IN PROCEDURES

As you arrive at Will Rogers Memorial Center, please consider the following check-list to help you get your horse checked in, safely stalled and ready to show.

- Check into the stall office (**Moncrief Building**) – provide stall office personnel with the registered name of your horse(s) and the name of the person listed as “stalled with” on the stall reservation form you originally submitted. Stall personnel will give you a stall ledger listing your stall number(s) and give you directions to your stalls. If you purchase a stall at the show it must be paid for at the time the request is made, stalls will not be unlocked until payment is made. Please keep your ledger as proof of purchase to present in the show office when picking up your exhibitor packet. If you have received a confirmation letter in which a horse is listed as “not stalled”, it will be necessary to purchase or confirm the purchase of a stall for the horse and provide the stall ledger to the show office when picking up your exhibitor packet.
- Check into the show office (**Richardson/Bass Building**) – To pick up your exhibitor packet that includes the exhibitor numbers, you must present appropriate documentation – see SHOW OFFICE.
- Check your horse through the Inspection Station (**Burnett Building**) – Take your horse, the horse's **original Certificate of Registration** and corresponding exhibitor numbers to the inspection station. All horses entered in the show must be inspected against their original papers and have an official inspection stamp on their exhibitor numbers prior to entering any class.

SUBSTITUTIONS

If substitution of a horse is necessary in a non-pro class or of an exhibitor in an open class, such changes must be reported to the show office **prior to the class entering the arena**. No exhibitor or horse changes will be accepted at the announcer's stand or paddock.

No exhibitor changes will be allowed in non-pro classes.

No horse changes will be allowed in open classes.

Any horse entering the arena in which the exhibitor is anyone other than the one on record with the ApHC show office and in which an exhibitor change has not been filed with the show office prior to the class entering the arena will be disqualified.

SCRATCHES/REFUNDS

Exhibitors with horses that become sick or injured **PRIOR** to the show must submit a vet's statement concerning the condition of the horse, the horse's registration name and number and this must be received in the ApHC Show Office **PRIOR TO THE CLASS ENTERING THE ARENA**. **Once the show begins, only statements from the Official Show Veterinarian, along with an official class scratch form, will be accepted for horses that become sick or injured on the show grounds.** All documentation must be in the Show Office **PRIOR TO THE CLASS ENTERING THE ARENA**. If a horse does not compete in a class in which it is entered and a vet certificate and official scratch form has **NOT** been received, the entry fees will be forfeited.

Equipment and cattle charges may be refunded only if horses are vet scratched 15 days prior to the first day of the show (October 10, 2019). The above-mentioned are the only instances in which refunds will be allowed. Absolutely no refunds for administrative fees or stall fees will be given under any circumstances. At the conclusion of the show and after the completion of a financial review, entry fee(s) will be refunded less a \$20 per class office charge.

No refunds will be issued for administrative/drug testing fees, stall fees, NSBA fees, ApHCF practice class fees or Stallion Service Auction Incentive classes for any reason. RV fees are non-refundable after September 27.

Refund checks, for all entries originally paid by check, will be mailed to exhibitors approximately 30–45 days following the last day of the show. For all entries paid by credit card, refunds will be credited to the original credit card approximately 30–45 days following the last day of the show. If a horse is disqualified from showing by management or officials or if a horse is entered and not shown, the entry and stall fees will be forfeited. No refunds will be made on amounts of \$10 or less.

No refund allowance can be applied to charges while at the show.

INSPECTION STATION

The horse's **original Certificate of Registration** and **exhibitor number** must be presented to the Official Inspector prior to showing. Horses will not be allowed entry into the arena for any class until that horse has passed through the inspection station and that horse's exhibitor number has been stamped by an Official Inspector. This policy also applies to horses competing in any specialty association class.

The inspection station will be open from 8 a.m. to 5 p.m. on October 24, and from 7 a.m. to 5 p.m. each day thereafter. If it is necessary for an inspection to be performed outside of these hours an inspector may be available; however, the exhibitor will be charged \$100 per horse payable at the time of the inspection. The ApHC suggests you pick up your exhibitor number (contained in your exhibitor packet) in the show office and have your horse inspected as soon as you arrive on the grounds to avoid long lines prior to your class.

The inspector may, at his sole discretion, refuse to allow a horse to participate if the registration of the horse appears invalid or otherwise improperly issued. If an Official Inspector refuses to permit a horse to participate, the owner has the right to appeal such refusal to the appeals committee of the ApHC Board of Directors (see Rule 273 of the *Official Handbook of the Appaloosa Horse Club*).

DRUG TESTING

All horses entered in the show, and/or on the grounds, are subject to drug testing. For complete rules and regulations concerning drug testing procedures, refer to rule 40 of the *Official Handbook of the*

Windemere

8th Annual

HUNTER
CLASSIC

In Loving Memory of Spot My Blue Boy

2019 WORLD CHAMPIONSHIP SHOW



Class awards sponsored by
WINDEMERE EQUESTRIAN CENTER,
HOME OF ZIPPOS SENSATION

See Premium Book for class rules and regulations

Appaloosa Horse Club. The owner, trainer or other responsible party must witness the blood or urine sample collection and sign the forms required by the veterinarian. Failure to do so waives any subsequent objections to the testing process or results. All awards will be issued pending drug test results. If a horse is tested positive for unapproved drugs or unacceptable levels of approved medication, all ribbons, trophies, and other awards must be held in escrow by the ApHC until notification of the disciplinary committee's decision.

Drug tests will be administered at the discretion of the ApHC. Those horses selected for testing must report to the drug testing station immediately following each class or random request. Once blood and urine samples have been collected, the horse may leave the testing stall. Drug testing procedures will be strictly enforced.

OFFICIAL VETERINARIAN

In the event the ApHC designates a properly licensed veterinarian or veterinarians as the official veterinarian(s) or official drug testing veterinarian(s) for an ApHC-approved or sponsored event including, but not limited to, the National Show and World Show, as a service to exhibitors and other persons, and any exhibitor or other person directly or indirectly employs, retains, hires or otherwise utilizes the services, advice and/or expertise of such official show veterinarian(s) or official drug testing veterinarian(s), the ApHC shall not in any manner or to any extent whatsoever be liable or responsible for any action, conduct, decisions or services by such official show veterinarian(s) or official drug testing veterinarian(s). Such exhibitor or other person expressly releases and holds harmless the ApHC from any and all claims, liabilities, losses or actions of any kind arising from or in connection with the exhibitor or other person's employment, retention, hiring or utilization of the services, advice and/or expertise of such official show veterinarian(s) or official drug testing veterinarian(s).

There may be veterinarians other than the ApHC Official Veterinarian on-site, however vet scratches will not be accepted from anyone other than the ApHC Official Veterinarian.

CLASS PROCEDURES

The ApHC has established class procedures to benefit the majority of exhibitors participating, within the limits of available budget, manpower and time.

CLASS PATTERNS

Patterns will be available to download (at no charge) on the ApHC website on October 15. Pattern books will be available in the show office and in the stall office at no charge. Patterns will be posted in the paddocks the day of the class.

DISQUALIFICATION

Any exhibitor, horse or owner disqualified from any class for any reason shall not receive a refund. When disqualification occurs by the show management or judges, the decision is final. In addition to other disqualifications as outlined in the rules and regulations contained in the *Official Handbook of the ApHC*, judges (including equipment judges) shall have the authority to disqualify entries for illegal equipment or attire, inhumane treatment, unsoundness/lameness or the presence of blood on the horse. See rule 30 of the *Official Handbook of the ApHC* for more information.

Exhibitors are not allowed to wear earpieces or to have wireless contact with anyone during the course of a class. Exhibitors in violation of this rule shall be disqualified.

In response to industry developments, the ApHC Board of Directors has agreed that the use of magnetic devices in clothing in showmanship, horsemanship, hunt seat equitation and saddle seat equitation constitutes an unfair advantage for exhibitors and shall not be allowed at ApHC-sponsored shows (Youth World, National Show, World Show). Magnetic devices must be removed prior to competition or the exhibitor shall be disqualified. This show management rule is effective immediately.

The use of belly bands is prohibited anywhere on the show grounds at ApHC-sponsored shows (Youth World, National Show, World Show).

WORKING ORDER

All working orders in elimination and final classes will be decided or drawn by show management in accordance with official ApHC rules. If you or your horse are entered in back-to-back or concurrent classes and feel that this will cause a time constraint, **you must inform the show office by 6 p.m. the day prior to the classes and request a change in the order of go. Adjustments shall only be requested for direct horse or exhibitor conflicts.** If possible, show management will then adjust your working order. If you do not contact the show office prior to 6 p.m. the day before the class in question, we may not be able to accommodate your request. Once working orders or cuts have been posted, changes will not be made unless approved by show management.

PADDOCK PROCEDURE

Only exhibitors and their horses are allowed in the alleyway and holding area. This policy applies for the duration of the class, including eliminations and finals, etc. Once the horse has entered the paddock, only exhibitors entered in the class will be allowed to handle or ride their own horse. *For safety reasons, exceptions may be made to this in over-fence classes when an exhibitor is showing more than one horse in a class. Exceptions must be approved by the paddock manager.*

Grooming is prohibited in these areas including, but not limited to, any type of spraying.

Barn calls are a courtesy and will be made for each class and for all exhibitors entered in each class. Regardless of the circumstances, it is the exhibitor's ultimate responsibility to report to their class on time. Exhibitors must check in with the paddock announcer.

The paddock announcer will call exhibitors to enter the arena in their posted order of go. All horses must be ready and waiting in the make-up arena so they may enter the main arena promptly when called.

In classes in which an order of go has been posted, entries not entering the arena for judging in their posted order of go have missed their class and will not be allowed to enter the arena to compete.

In classes in which a time limit has been given to enter the arena, entries not in the arena at the expiration of that time limit have missed their class and will not be allowed to enter the arena to compete.

Late entries will not be admitted into the arena.

EQUIPMENT JUDGE

An equipment judge(s) shall be employed by and be a representative of the ApHC. The equipment judge shall be responsible for attire and equipment rule interpretations. (Final interpretations are the responsibility of show management). All bits, tack, appointments and attire shall be checked by the equipment judge prior to the exhibitor entering the arena. **Any equipment considered to be inhumane**



Easy Walker

- Heavy Duty Variable-Speed Motor 0-8 MPH
- Barn Mounted Forward-Stop-Reverse and Speed Control Panel
- Quick-Release Safety Cable
- Completely Enclosed Cabinet
- 14' to 20' Arms



Safe-T-Mill

- Wider • Longer • Quieter
- Computer Controlled • Shock Resistant Floor
- All New See Through Clear Sides
- Modern Fitting of the Equine Athlete

Easy Stocks

The Most Security Possible for Both the Handler and Horse.

Easy Stocks® can be used for:

- Breeding • Palpating and Examinations
- Treating Injured Horses
- Giving Vaccinations to Horses
- Washing and Grooming



AN
OWEN FARMS
ENTITY

or illegal by the official equipment judge must be removed or entry into the arena will be denied. The equipment judge and/or judges in the arena may disqualify an entry for illegal equipment, improper attire, inhumane treatment, unsoundness/lameness or the presence of blood on the horse. See Rule 30 for complete rules regarding inhumane treatment.

The equipment judge(s) shall have the authority to call for a blood and/or urine test on any horse.

The equipment judge(s) may serve as an alternate show judge at the discretion of show management.

BLOOD DISQUALIFICATION

In all classes and all divisions of classes, judges and/or equipment judges may disqualify horse(s) from the class if fresh blood is found on the mouth and/or body areas of a horse (i.e. including but not limited to the barrel, flanks, belly, sides, shoulders). Judges and/or equipment judges have the sole authority to determine if the blood found on the horse warrants disqualification from the class and the judge's or judges' decision is final and not protestable.

LAMENESS

Rules regarding lameness are adopted to protect the health of Appaloosas exhibited in ApHC-approved and -sponsored shows. At show management's discretion, either at the beginning and/or upon completion of a class or individual work, prior to leaving the arena the horse shall be asked to perform movements/maneuvers on a loose rein or lead to demonstrate soundness. Exhibition in any class of a horse that is lame, as determined by show judges, shall be cause for disqualification. See rule 712 in the *Official Handbook of the ApHC* for complete rules regarding lameness. A judge's decision as to the lameness of a horse is not protestable.

INHUMANE TREATMENT

The ApHC is committed to the humane and proper treatment of all animals. The welfare of the horse is the primary consideration in all activities. Horses will be treated with kindness, respect and compassion at all times. Owners, exhibitors, trainers and all responsible parties must ensure the health and well being of animals in their care at all times including, but not limited to, handling, transportation, training, treatment and stalling.

Per Rule 30.A.1 of the *Official Handbook of the Appaloosa Horse Club*, no person may treat a horse in an inhumane manner which includes but is not limited to:

- Placing an object in a horse's mouth so as to cause undue discomfort or distress.
- Tying a horse in a manner as to cause undue discomfort or distress including but not limited to in a stall, trailer or when longeing or riding.
- Letting blood from a horse.
- Use of inhumane training techniques, equipment or methods including but not limited to poling or striking horse's legs with objects (i.e. tack poles, jump poles, etc.)
- Attaching any item or appliance that restricts movement or circulation of the tail.
- Inhumane treatment that causes a horse to bleed.
- Any surgical procedure or injection of any foreign substance or drug which could affect the horse's performance or alter its natural conformation or appearance is prohibited, except for those surgical procedures performed for the sole purpose of protecting the health of the horse.
- Exhibiting a horse that appears to be sullen, dull, lethargic, emaci-

ated, drawn or overly tired.

- If fresh blood is found on any mouth and/or body areas of a horse, (i.e.: including but not limited to: barrel, flanks, belly, sides, shoulders) the judge(s) must excuse the horse from the competition.
- Withholding food and/or water for prolonged periods of time such that it causes undue discomfort or distress to the horse.
- Excessive spurring or whipping;
- Excessive jerking of reins;
- Excessive fencing;
- Excessive or aggressive spinning;
- Use of prohibited equipment, including, but not limited to: saw tooth bits; hock hobbles; tack collars; or tack hackamores; riding in a curb bit without a curb strap; wire or solid metal curb straps no matter how padded; wire cavesson; wire or cable tie-downs (un-less wrapped or padded); bumper bits; metal bosals (no matter how padded or padded), twisted rawhide, or rope may not be used on a horse's head (3/8 inch rope may be used with a slip/gag bit); running martingales used with curb bits and/or used without rein stops;
- Applying excessive pressure on or excessively jerking a halter lead shank or an allowed lip chain
- Any other treatment or conduct deemed by a show official to be inhumane or abusive.
- Exhibiting a horse that has an open, raw or bleeding sore that repeatedly comes in contact with the hackamore.

The standard by which conduct or treatment will be measured is that which a reasonable person, informed and experienced in generally accepted equine training and exhibition procedures, would determine to be cruel, abusive or inhumane.

A Show Steward may be employed by and be a representative of the ApHC. He/she shall monitor the treatment of horses on the WRMC property. Upon discovery by a show official, show steward or barn monitor of inhumane treatment, show management may immediately disqualify the horse and exhibitor and report the matter to the ApHC for further disciplinary action.

STALL RESERVATIONS AND FEES

Pre-Entry Deadline: September 26, 2019

You must complete the ApHC stall reservation form found online. Please complete only one form per trainer/ranch/group. You must have your stalling information in the ApHC office by the pre-entry deadline to receive preferred stabling and pre-entry deadline prices. Stall location and/or availability are not guaranteed. Post-entry fees shall be assessed to both regular and daily stalls if the reservations are received after September 26. Post entry fees are \$100 per stall or \$40 per stall per day for daily stalls. Stall reservations not received in the ApHC office by October 4 should be taken to the show and submitted to the stall office upon arrival.

STALL FEES ARE AS FOLLOWS:

\$275 (\$375 late) each— Burnett Building, Richard-Bass Building, Moncrief Building, Barn A (Equestrian Multi-Purpose Building)
\$250 (\$350 late) each— Barn 4
\$75 (\$115 late) per night - Daily Stalls are all located in Barn 4.

No stall reservations will be accepted without full payment of all stall fees. See PAYMENT PROCEDURES for information on how to purchase your stalls.

The stall reservation form must be completed and submitted with each horse's registered name and registration number. List all horses that will be occupying stalls. List all tack/feed stalls separately as



FACILITY Information

PARKING

Please park vehicles and trailers in marked parking spaces only. Rip Johnson Drive is available for unloading only. Parking is not permitted on Rip Johnson Drive, Burnett/Tandy Drive or Tower Drive at any time. All other trailers must be parked in the trailer parking lot off of Trail Drive. Also, no parking is permitted in any fire lanes. Vehicles blocking fire lanes will be towed at the owner's expense. See parking information on page 24.

SHAVINGS

Exhibitors and contestants are not permitted to bring shavings or other bedding onto the grounds. Will Rogers Memorial Center retains sole rights to shavings sales. Shavings are \$7.00-\$10.00/bag. Shavings are for sale at the VRMC shavings office in the Moncrief Building. Shavings can be purchased at the stall office if the shavings office is closed.

WASHING HORSES

All animals must be washed in designated wash areas. Horses may not be washed on sidewalks, aiseways or in stalls. The State of Texas prohibits wastewater from entering storm drains.

LOADING/UNLOADING AREAS

Unloading is permitted on Rip Johnson Drive and north of the Richardson-Bass Building. At no time is unloading permitted on Tower Drive west of the Burnett Building. Arriving horse trailers will receive a permit from the security station to unload. At the expiration of your designated time limit, trailers must be moved to the designated parking areas.

STALL DECORATIONS

Please limit end-of-aisle decorations to 42" deep and at least a 7" height clearance over aisles for equipment. VRMC asks that a covering, such as plastic, be placed underneath any ground cover or plants. Decorations must be attached using temporary setups, such as wire or plastic ties and removed prior to move-out. The following may NOT be used: Nails, Liquid Nail, Bolts, Screws, Rubber Cement, etc. Any fabric or paper used or draped on stalls must be fire-resistant or treated with fire retardant.

VEHICLES

Any vehicle, including golf carts and scooters, must be operated by a licensed driver. See page 24 for complete guidelines.

PETS

Fort Worth city ordinance provides that pets are allowed in stall areas only and must be secured by a leash or in a stall at all times. They are not permitted inside any building on the property. Please make arrangements in advance for pets to remain in stall areas, RV or other area. Owners assume all liability for pets. Tickets may be issued to participants not adhering to this policy.

RV PARKING

VRMC offers RV spaces in the lot off of Trail Drive with power, water and sewer hook ups. Spaces are available by advanced reservation. There are 104 additional RV spaces north of the Richardson/Bass building, that included a 50 or 30 amp service with sewer. Go to www.appaloosa.com and click on National Show to locate RV reservation form. For best rates, the forms are due by September 27.

"BLUE BOARDS"

VRMC invites exhibitors to post signs, flyers, etc. on the "Blue Boards" posted throughout the facility. Signs posted in other areas will be removed.

DUMPSTERS

Exhibitors are encouraged to take advantage of the large rolling dumpsters throughout the complex. They may be rolled into stall aisles or the parking lot for easier cleaning.

BARN PARTIES

Barn Parties must be scheduled and approved by the show management and VRMC management. They are limited to a 1-hour time period and must be serviced by licensed and approved caterers. In addition, any alcoholic beverages must be purchased through the contracted concessionaire of VRMC. The VRMC management may be contacted with any questions.

AISLEWAYS

Aisles may not be blocked with obstructions including, but not limited to, chairs, carts, roping dummies, stall decorations or golf carts.

GOLF CARTS

Please see page 24 for Will Rogers Memorial Center guidelines for golf cart use.

SMOKING

Smoking is not permitted in the barns or stall areas. Fort Worth City ordinance prohibits smoking in any of the Will Rogers Memorial Center buildings. Violators will be prosecuted.

SECURITY

Security will be on the grounds on a 24-hour basis. For your protection, you will be allowed limited access to those streets which run parallel the barn area of the Will Rogers Memorial Center. Despite precautions, no one is immune from crime, so please take the proper care when locking trucks, trailers, tack boxes and tack stalls.

STALL AREA

Refrigerated air units, microwaves and other appliances are prohibited in the stall area.

The Will Rogers Memorial Center is a Non-Smoking Facility

"TACK/FEED". If your horse is in the process of being registered, include it on the stall card with the registration name and number as "REGISTRATION PENDING". Please indicate your first and second choices for stall locations (Refer to WRMC Facility Map online for building locations) and include aisle or end location and any other notes that may be helpful for personnel assigning your stall location. The number of stalls requested cannot exceed availability in that area.

If you are stalling with a trainer/ranch/group, send all stall requests AND PAYMENTS in the same envelope, choosing just one trainer/ranch/group name for the "stalled with" person. Include the total number of stalls on one card only. Stall requests not included in the same envelope or not faxed together are not guaranteed to be stalled together.

NOTE: The person listed as "stalled with" is responsible for all money due and will be held liable for all damages reported to stalls and is responsible for any payments due for damage or stall panels that are removed and not replaced by the exhibitor. ApHC will attempt to stable each trainer/ranch/group according to choices requested on the stall reservation form. However, stabling decisions are made based upon the stabling history of the person listed as "stalled with" at this show and based upon the availability of stalls in the requested area(s).

If you request additional stalls upon arrival, or after the original request is received, those stalls must be paid for at the time of the request and may not be located with your other stalls. **Stalls purchased after September 26 will be at late prices regardless of when you purchased your original stalls.**

All reservations or changes to original reservations must be made in writing to the ApHC office. Reservations or changes to current reservations will not be accepted over the phone.

Stall locations will not be given out prior to your arrival at the WRMC. You must check in at the stall office in order to receive your stalling assignments.

Stalls will be available for move in after 7:30 a.m. on Wednesday, October 23. Do not arrive prior to this as WRMC will be unable to accommodate early arrivals.

Stalls must be vacated by 11:59 a.m. November 3. **All horses participating in the show, i.e. entered, turn-back, assisting or any breed of horse on the grounds must be stalled.** Horses CANNOT be tied to horse trailers.

Exhibitors are not allowed to change stalls without the approval of the stall manager. If you change stalls without the approval of the stall manager, you will be charged for both stalls. Stalls cannot be re-sold. Air conditioning and/or heating units are not allowed in the barns. Individual cooling units will be confiscated until the end of the show.

Will Rogers Memorial Center (WRMC) will assess a charge of \$15/panel for any portable stall panel that is removed during the show. These panels may be placed in the barn aisle prior to the start of the show. WRMC will remove the panels and replace them after the show. Exhibitors removing stall panels will be assessed these fees after the conclusion of the show upon ApHC receipt of the WRMC invoice. Exhibitors may choose to fold back the stall panels in the portable stalls and zip-tie those *and then re-assemble the stall at the conclusion of the show* to avoid these charges. Stall panels in permanent stalls shall NOT be removed under any circumstances.

If you wish to stall with someone, send all stall requests in the same envelope or fax all requests at one time. Include the total number of stalls requested on one card only. Stall requests not included in the same envelope or not faxed together will not be accommodated.

The person listed as "stalled with" is responsible for all stall money due.

If your stalls are located on an aisle way in the Burnett, Richardson-Bass, Moncrief or Equine Multi-Purpose buildings, the ApHC requests that they be decorated for the duration of the show for presentation to the public and to minimize any potential hazards that occur while assembling decorations and which may cause harm to fellow exhibitors and horses. If they are not, you may not receive consideration for that location at subsequent shows.

Stalls in the Burnett and Richardson-Bass buildings are on concrete floors and stalls measure 9'10" wide by 9'8" deep.

Portable stalls (measuring 9'5" x 9'5") are set in the Moncrief building, Equine Multi-Purpose building and in all the cattle barns. Stalls in the Equine Multi-Purpose Building are on concrete floor. Stalls in the Moncrief building and cattle barns are on dirt floors.

Horses other than those registered with the Appaloosa Horse Club may be stalled on the grounds. However, **ApHC-registered horses have stalling priority.** Non-Appaloosa horses may be stalled with Appaloosa horses depending upon space availability. **Stalling of all horses, including those not registered with the ApHC, is at the sole discretion of show management.**

STALL OFFICE HOURS

The stall office is located in the Moncrief Building and will open on Wednesday, October 23 at 7:30 a.m. and will be open 24 hours a day thereafter through the last class of the show.

STALL CHECK-IN PROCEDURES

After arriving at the Will Rogers Memorial Center, you must check-in at the stall office to receive your stall location.

You must verify with stall office personnel the names of all horses that will be stalled. You will receive a stall ledger from the stall office listing stall locations and proof of payment. The person listed as "stalled with" must sign the ledger accepting responsibility for any damages and stating that the stalls will be left in good, clean condition. This ledger must be presented in the show office when picking up your exhibitor packet. Exhibitor packets for horses entered that do not have verified stall locations will not be released.

STALL DECORATIONS

All materials used in decorating stalls must be treated with a fire retardant or be made of fire retardant material. Due to fire regulations, stall aisles cannot be blocked or closed off to through traffic. The Fire Marshall will be on-site randomly inspecting decorations for compliance with regulations. See FACILITY INFORMATION page 30 for complete regulations.

Any fabric or paper used or draped on stalls must be fire-resistant or treated with flame retardant. The person listed as "stalled with" is responsible for any damage to stalls, and for any clean-up of materials such as decorations, signs, fabric, nails, tacks, wires, etc. Any damages assessed by WRMC will be billed to the person listed as "stalled with". All stalls must be vacated by 11:59 a.m. November 3.

STALL MAINTENANCE

Exhibitors are required to keep their stalls clean and neat, dispose of refuse matter in designated dump areas and remove all items and materials they attach to the stalls, including decorations and all signs.

For more information regarding Will Rogers Memorial Center stall regulations, please see FACILITY INFORMATION on page 21.



Located on 24 acres within 10 minutes of the OKC State Fair Park,
Oklahoma City Equine Clinic is a full-service equine facility
staffed by five equine practitioners.

Brian S. Carroll, DVM • Dee M. Gragg, DVM
Larry D. Powers, DVM • Amanda Wilson, DVM
Kelli Beavers, DVM, DACT

400 NE 70th Street
Oklahoma City, OK

(405) 843-1099
(405) 843-1143 Fax

info@oklahomacityequine.com
www.oklahomacityequine.com

Thank You
Windemere
Equestrian Center



Saddle Sponsor

2019
WORLD
CHAMPIONSHIP APPALOOSA SHOW

World's
Best Appaloosa

FORFEITURE OF STALL LOCATION

Per Board motion, any suspended person or person otherwise ineligible to participate at the National and/or World Show(s) shall forfeit any preferred stall(s) location at the National and/or World Show(s). In connection with any member's stall entry reservation application for the National and/or World Show(s), if the person they list as "being stalled with" is suspended or ineligible to participate at the National and/or World Show(s), the member applicant will forfeit their preferred stalling location(s) at the National and/or World Show(s) as applicable. All other members stalling with any suspended or ineligible person will forfeit their preferred stalling location(s). Stalling location refers to any established or designated area that the suspended or ineligible person has usually occupied. At the end of the suspension or ineligibility period any such preferred stall location(s) shall not revert back to the suspended or ineligible person or other members who forfeited their preferred stalling location(s).

BARN RULES

See **FACILITY INFORMATION** on page 21.

BEDDING

Shavings are for sale at the WRMC grounds. Orders can be placed at the shavings office located in the Burnett building. No outside commercial vendor deliveries will be permitted. Exhibitors are not allowed to bring their own shavings on to the grounds and will be billed for unauthorized shavings. Costs to remove unauthorized bedding will be billed to the exhibitor.

As a service to World Show exhibitors, the ApHC will accept pre-bedding orders on behalf of the WRMC for orders of 50 or more bags of shavings. A pre-bedding form is available online by clicking on the World Show logo at www.appaloosa.com. Please submit pre-bedding forms completed in their entirety directly to the ApHC no later than October 4, 2019 and make checks payable to the ApHC. Requests not received in the ApHC office by October 4 will not be filled. In most cases, delivery of pre-bed orders will be made prior to your arrival on the grounds.

You may also purchase shavings from WRMC upon arrival at the grounds. During evening hours when the shavings office is closed, you may purchase a limited amount of shavings from WRMC through the ApHC stall office. These shavings may not be delivered to your stalls but can be picked up near the stall office.

FEED

The Official Feed Supplier of the World Championship Show is Russell Feed & Supply. Only the Official Feed Supplier will be allowed to deliver feed or do business on the grounds. Orders can be placed by using the form available online by clicking on the World Show logo. Orders should be mailed directly to Russell Feed & Supply, NOT to the ApHC.

Russell Feed & Supply is not affiliated with the ApHC. WRMC regulations will not permit feed to be delivered to exhibitors from outside vendors, however exhibitors have the right to bring feed with them onto the WRMC property that has not been purchased from the on-site vendor.

The ApHC assumes no responsibility and/or liability of any kind or connection with any hay and/or feed purchased from the on-site vendor.

GOLF CARTS

Will Rogers Memorial Center requires that all operators of golf

carts observe the following rules to allow for safe and continued use of golf carts at the World Show. Any person operating a golf cart in an unsafe, reckless or dangerous manner will be detained by law enforcement officers. In some cases, golf carts can and will be impounded.

- Golf cart operators **MUST** have a valid driver's license with them at all times.
- Golf carts are prohibited inside the trade show and on arena concourses. Golf carts may be driven inside stall areas if operated in a safe manner with care exercised to avoid endangering people and animals.
- Golf carts may only be driven on the streets in the direction of traffic.
- Golf carts are prohibited inside all arenas unless the arena is specifically designated for that purpose. Golf carts may be used in show or exercise arenas only if operated by ApHC or WRMC show officials or personnel.
- Golf carts must yield to all pedestrians and horses and may not be parked blocking an entrance. Golf carts parked in front of handicapped entrances or ramps will be impounded.
- Golf carts can be parked on some sidewalks, but **SHALL NOT BE DRIVEN** on any sidewalks.

The use of the golf carts on Will Rogers Memorial Center grounds is a privilege. Anyone abusing this privilege will not be allowed to use any golf cart. Golf carts are not available for rental from the ApHC or the WRMC. See ad on page 19 for golf cart rental information.

PARKING

The following information has been provided by Will Rogers Memorial Center and details the parking requirements for the facility.

There is no charge for unloading either horses or trade show merchandise from the street. However you have to unload and move on. Exhibitors will need to set up their stall or booth after they unload since there is no parking on the streets. A parking fee will be charged when the trailer is moved to a parking lot.

Parking anywhere inside the complex is \$5/day per vehicle. Properly permitted vehicles may come and go from the property at will. Posted parking permit fees may differ from this, however parking for horse show attendees is \$5/day per vehicle. **Please be sure to request the horse show fee when paying for parking.**

There is no trailer parking inside the complex. Trailer parking is not allowed south of the Moncrief building or the cattle barns.

Trailer parking or vehicle parking in the large paved lot off Trail Drive is \$5/day.

RV spaces come with one parking pass for a tow vehicle at no extra charge. This pass will allow the vehicle to park in any lot on the property.

All of the parking attendants have the ability to take cash or credit cards. Multi day passes are available either on site or in advance online at www.culturaldistrictparking.com. Click on Appaloosa World Show for passes specific to this event. Online purchases require payment of a convenience fee. Purchases made on-site do not include this fee.

Please visit the ApHC Web site at www.appaloosa.com. Click on World Show and then on WRMC Parking for additional information and to get answers to frequently asked questions.

Trailers and/or vehicles violating posted or announced parking rules shall be subject to towing/impounding.

Thank You Day Sponsors

Friday, Oct. 25

France Appaloosas & ApHC Stallion,
Tell Me Im Hot

Saturday, Oct. 26

Owatonna Motor Company

Sunday, Oct. 27

Heather Runyon Show Horses
& Wagon Road Farm

Monday, Oct. 28

The Knight Family
& Wild Gold Supplements

Tuesday, Oct. 29

Lori Conger

Wednesday, Oct. 30

Te Coolest

Thursday, Oct. 31

RNJCairo LLC

Friday, Nov. 1

Plus One Performance Horses

Saturday, Nov. 2

Maestas Show Horses

RECREATIONAL VEHICLES

WRMC offers RV spaces on the complex in various locations. Some spaces offer water/electricity only. There are 104 spaces north of the Richardson-Bass building that offer full hook-ups including sewer.

Space reservations are being accepted by the ApHC on a first-come, first-served basis. A reservation form can be found by clicking on the World Show logo on the home page at www.appaloosa.com. Spaces may be reserved at the lowest rates if received and paid in full by September 27.

All spaces should be reserved as soon as possible to guarantee availability.

ACCOMMODATIONS INFORMATION

The State of Texas provides a financial incentive package to the ApHC to host the World Championship Appaloosa Show in Fort Worth. In order to sustain their financial support, the ApHC must certify the number of hotel room nights utilized in Fort Worth during the show. Show attendees must provide lodging information prior to picking up exhibitor packets. This form is available online or in the show office.

In addition, please encourage all those in attendance at the show, whether exhibiting or not, to assist the ApHC in this process by providing information on their lodging accommodations to the show office.

EVENT PROGRAM

The event program will list entries received in the ApHC office by the pre-entry deadline and will be available at the ApHC Information Booth, ApHC Show Office, and ApHC Stall Office.

FARRIER

Only the official show farrier(s) will be permitted to conduct business on the grounds. Exhibitors wanting another farrier must request approval from show management.

COMMERCIAL EXHIBIT INFORMATION

For information contact the Trade Show Coordinator, ApHC, 2720 W. Pullman Road, Moscow, ID, 83843, (208) 882-5578 ext. 273. The trade show will be open daily from 9 a.m. to 6 p.m. The trade show will close at 3 p.m. on Saturday, November 2.

Exhibitors will not be allowed to sell retail items from their stall locations. Exhibitors wishing to sell retail items must purchase trade show space from the ApHC, pay all applicable fees and are subject to abide by a contractual agreement between the ApHC and said vendor. Vendors are subject to Texas State retail and tax laws.

DOGS/PETS

See FACILITY INFORMATION regarding pet regulations.

ELIMINATION, FINALS AND SCORING

Scoring

For the majority of classes either a four-judge or a three-judge format will be used to compute placings. This will be determined by show management. In most four-judge formats, the low scores will be discarded and the remaining three scores added together to determine final placing. In the three-judge format, no scores will be discarded, all three scores will be added together to determine final placing.

In placed classes, the judge's placing will be converted into numerical scores according to this chart.

1.....120	6.....55	11.....15
2.....105	7.....45	12.....10
3.....91	8.....36	13.....6
4.....78	9.....28	14.....3
5.....66	10.....21	15.....1

Cuts

In large classes when cuts are necessary, the cuts will be determined by a random draw. Each cut will enter the arena for judging and will be placed by all judges. Top placing entries from each cut will return to the arena for a final go-round. The same exhibitor must exhibit the same horse in both the cut and the final. The same equipment must be used on each horse in the cut and the final.

Tie-Breaking Procedures

All ties, except first place in individual performance events, will be broken by a tie-breaking judge (pre-determined by show management before the class begins). If a tie occurs for first place in any individual performance class judged complete or in any individual performance class finals judged complete, there will be a work-off for first place only. Individual performance classes include western riding, reining, working hunter, cutting, trail and judged roping events.

In the event of a first-place tie in working cow horse, see Rule 741.F in the *Official Handbook of the ApHC* for tie-breaking procedures.

ELIMINATIONS

Eliminations may be held in classes when warranted by the number of entries in the class and shall be at the discretion of show management. Any horse receiving a no-time or a no-score in an elimination round will be eliminated. In case of a tie, except in stumps and stake races, all those tied will go forward to the finals. In the event that it is not necessary to run an elimination round, the class will be run complete at the time the final round is scheduled.

In Camas Prairie Stump Race and Nez Perce Stake Race, if a tie occurs in an elimination round for the last position in the finals bracket, those horses tied will re-run on time only with the fastest time advancing.

In timed calf roping, timed heading and heeling, and cutting, the combined scores (cutting) and times (roping) in the elimination round and the finals will be used to determine the final placing. In the finals, the working order shall be determined by the times (in roping). The horse with the fastest qualifying time (in roping) will be the last to work in the finals for that class. The working order in the finals of any cutting classes will be determined by a random draw of those qualified to compete in the finals.

Once an elimination round has been held, no change of horse/rider combination or tack/equipment is allowed for the finals. In heading and heeling, the entrant must have the same helper in both the elimination and final rounds.

In most classes, when possible the top 16 horses will be called back for the finals. In all cutting classes, the top 10 finalists will return for the finals.

AWARDS

Ribbons & Trophies

In all ApHC World Show classes, a World Champion trophy will be awarded to all first place winners and the Reserve World Champion trophy awarded to second place. Ribbons will be awarded for 1st through 10th place.

Groomed to Win

WITH **ULTRACRUZ®**



Photo Credit: Appaloosa Journal



UltraCruz® Equine Grooming Products offer a vast selection of shampoos, conditioners and finishing formulas that help horses maintain the brightest and most polished appearance possible! The natural ingredients are gentle and effective, promoting clean, healthy skin and coats. Regular use can give your horse the professional appearance it needs to win!

Easy-to-use and affordable – UltraCruz® products are developed and made in the USA by Santa Cruz Animal Health.

scahealth.com



UltraCruz® Equine Bright White Shampoo, UltraCruz® Equine Show Polish Spray, and UltraCruz® Equine Conditioner. Essential products for a show ring shine.

Medallions & Non-Pro Medals

All ApHC open classes are medallion classes except green classes, ranch horse conformation, Windemere classes, freestyle reining, and stallion service auction futurity classes.

All non-pro classes are medal classes except non-pro yearling long line (western and hunter), novice cutting, non-pro ranch horse conformation, non-pro boxing and non-pro walk/trot classes.

There must be at least 3 horses shown in a class for it to be considered eligible for a medallion or non-pro medal.

Escrow of Awards

All awards and premium checks will be issued pending notification of drug testing results. If a horse is tested positive for unapproved drugs or unacceptable levels of approved medication(s), all ribbons, trophies, and other awards must be held in escrow by the ApHC until notification of the Disciplinary Committee's decision.

Premium Payback

Halter and Performance classes: \$300 added to each class. Total purse includes \$30 of each entry fee (all horses entered in the class minus those vet scratched). Added money plus entry fee money will be divided as follows: 1st-40%; 2nd-25%; 3rd-15%; 4th-10%; 5th-5%; 6th-5%.

No premium payback will be given in non-pro equitation, horsemanship, showmanship or novice classes. All premium checks will be mailed to the current, first-listed owner or lessee on record only (as determined by ApHC records at the time class is held). Any other arrangements for premium award payments are between trainer and owner(s) and are not the responsibility of the ApHC. When class size is less than 6 entries, all unpaid premiums are retained by the ApHC.

For tax purposes, a 1099M for premiums won will be issued to the current owner of record at the time of the show. In the instance of multiple owners, a 1099M will be issued to the first current owner listed on the Certificate of Registration. The social security number listed on the W-9 form should be that of the owner, or in cases of multiple owners, that of the first listed current owner.

Premium payback will be mailed after drug test results are obtained by the ApHC.

Non-Pro Halter Premium Payback

Iron Horse Ranch / Lonnie Ledbetter will pay premiums in all non-pro halter classes based on the following conditions:

There must be a minimum of 7 entries in the class in order to receive the premium. In classes of 7 or more entries, first place will receive \$400; second place will receive \$300 and \$100 will be paid to 7th, 8th, 9th or 10th place depending upon the number of entries in the class. \$100 will be paid to 7th place in a class of 7, to 8th place in a class of 8, to 9th place in a class of 9 or to 10th place in a class of 10 or more entries.

AWARD CALCULATIONS & TIE-BREAKING PROCEDURES

Horses will receive points toward special open and non-pro awards for 1st through 10th place. First place will receive 11 points, 2nd place will receive 9 points, and so on down to last place which will receive 1 point unless otherwise specified. If there are less than 10 horses in a class, scores will be based on the number competing with the 1st place horse receiving one more point than the number of horses in the class, the 2nd place horse receiving 2 fewer points than the 1st place horse and the 3rd place horse receiving 1 less point than the 2nd place horse and so on down to last place which shall receive 1 point unless otherwise specified.

Unless otherwise stated under individual award listing, in the case of a tie, the horse earning points in the greater number of classes that count toward that award will be the winner. If that fails to break the tie, the horse placing 1st through 10th over the greatest number of total entries will be the victor.

In the case of a tie in the non-pro division, the non-pro earning points in the greater number of classes that count toward the award will be the winner. If that fails to break the tie, the non-pro earning points in the greater number of performance classes will be the winner. If that fails to break the tie, the non-pro placing 1st – 10th over the greatest number of total entries will be the winner.

The ApHC does not accept responsibility for misprints in daily award tabulations. All information is not final until verified.

WORLD'S BEST APPALOOSA

In order to compete for this title, a horse must enter and compete in a minimum of three categories to be eligible. The horse's top two World's Best point earning placings in each of five categories will be used to calculate placing. In addition, the horse must earn World's Best points in a minimum of two categories. Categories for tabulation of World's Best Appaloosa are listed below. ONLY the following classes will be used for tabulation of this award:

- I. Halter (all age divisions except weanlings and FPD classes), Most Colorful at Halter, Hunter in Hand (except yearling division), and Performance Halter.
- II. Junior & Senior Western Pleasure, Junior & Senior Hunter Hack, Pleasure Driving, Junior & Senior Hunter Under Saddle, and Saddle Seat Pleasure.
- III. Junior & Senior Reining, Junior & Senior Western Riding, Junior & Senior Trail, Working Hunter, Junior & Senior Ranch Riding, Junior & Senior Ranch Trail, Junior & Senior Ranch Rail Pleasure.
- IV. Camas Prairie Stump Race, Nez Perce Stake Race, Rope Race, Keyhole Race and Figure 8 Stake Race.
- V. Steer Daubing, Junior & Senior Cutting, Heading & Heeling, Junior & Senior Judged Tie-Down Roping, Junior & Senior Judged Heading, Junior & Senior Judged Heeling, Timed Tie-Down Roping, Junior & Senior Working Cow Horse.

The following table will be used for tabulating World's Best points:

No. of Horses	1st	2nd	3rd	4th	5th	6th	7th	8th	9th	10th
3-5		1								
6-8		2	1							
9-11		3	2	1						
12-14		4	3	2	1					
15-17		5	4	3	2	1				
18-20		6	5	4	3	2	1			
21-23		7	6	5	4	3	2	1		
24-26		8	7	6	5	4	3	2	1	
27-29		9	8	7	6	5	4	3	2	1
30 & Over		10	9	8	7	6	5	4	3	2 1

Ties will be broken in the following manner: 1) The horse placing in the greater number of categories in first through tenth place, then 2) the horse placing in the greater number of classes listed above in first through tenth place, then 3) the horse defeating the greater number of entries in the classes listed above.

The horse named World's Best Appaloosa will receive: \$1,500 from the Appaloosa Horse Club, a three-horse gooseneck aluminum trailer with dressing room for one year's use compliments of Twin Cities South Trailer Sales, LLC of Pilot Point, Texas and Gary & Tammy Raak, and a custom-made Elite Custom Saddles Trophy Saddle.

ArenaWerksTM.com

The Ultimate Rotary Harrow
(800) 644-3724 or arenawerksinfo@sbcglobal.net



Visit **ArenaWerks.com**
to see what's new and exciting!!

Proverbs 16:3



**Snodgress Equipment is
your complete provider
of Arena WerksTM and Hey
WerksTM farm, ranch, and
arena equipment.**



800-644-3724
arenawerksinfo@sbcglobal.net
ArenaWerks.com

SNODGRESS
Arena Werks, The Ultimate Rotary Harrow for Arena Drag
Equipment

"Trust in the Lord when you do and you shall succeed" Proverbs 16:3

The reserve World's Best Appaloosa will receive an etched glass commemorative award sponsored by the Appaloosa Horse Club.

CHAMPION CATTLE HORSE

Classes that count toward this award are 141, 142, 161, 162, 181, 182, 220, 231, 232, 236, 237, 240, and 250.

Champion: \$1,000 from the Appaloosa Horse Club and a custom sterling silver Montana Silversmiths belt buckle.

Reserve Champion: Custom sterling silver Montana Silversmiths belt buckle.

CHAMPION WESTERN HORSE

Classes that count toward this award are 341, 342, 343, 361, 362, 381, 382, 421 and 422.

Champion: \$1,000 from the Appaloosa Horse Club and a custom sterling silver Montana Silversmiths belt buckle.

Reserve Champion: Custom sterling silver Montana Silversmiths belt buckle.

CHAMPION ENGLISH HORSE

Classes that count are 401, 402, 430, 441, 442, 460 and 500.

Champion: \$1,000 from the Appaloosa Horse Club and a custom sterling silver Montana Silversmiths belt buckle.

Reserve Champion: Custom sterling silver Montana Silversmiths belt buckle.

CHAMPION GAMES HORSE

Classes that count are 270, 280, 290, 300 and 600.

Champion: \$1,000 from the Appaloosa Horse Club and a custom sterling silver Montana Silversmiths belt buckle.

Reserve Champion: Custom sterling silver Montana Silversmiths belt buckle.

CHAMPION RANCH HORSE

Classes that count are 541, 542, 552, 554, 555, 556, 557, 558 and 559.

Champion: \$1,000 from the Appaloosa Horse Club and a custom sterling silver Montana Silversmiths belt buckle.

Reserve Champion: Custom sterling silver Montana Silversmiths belt buckle.

HIGH-POINT OVER FENCES HORSES

An award will be presented to the high-point over fence horse in the open divisions. Classes that count toward the open award are 401, 402, 500, 520, and 523.

An award will be presented to the high-point over fence horse in the non-pro division. Classes that count toward the non-pro award are 150, 160 and 170.

Awards are sponsored by Page and Dawson Simpson of Jacksonville, Florida.

WORLD SHOW LEADING BREEDER

An award will be given to the breeder earning the most points from horses placing in the top ten at the World Championship Show.

For a breeder to be eligible, at least three of that breeder's horses must be exhibited. The breeder is determined by ApHC records. For

example, John Doe (#123456) may compete against his wife Jane Doe (#654321) and against his farm John & Jane Doe Acres (#111222). The first listed breeder according to ApHC records and as printed on the Certificate of Registration will receive points for that horse's placing. This award will be calculated based upon pre-entries only.

Horses will earn points counting toward the Leading Breeder Award for receiving 1st through 10th place. First place will receive 11 points, 2nd place will receive 9 points, and so on through 10th place which will receive 1 point unless otherwise specified. If there are less than 10 entries in a class, points will be computed based on the number competing. However, first place will always receive 2 more points than 2nd place and 2nd place will receive 1 more point than 3rd place and 3rd place will receive one more point than 4th place and so on.

In case of ties, the breeder of horses placing 1st through 10th over the greater number of entries will be the winner. If that fails to break the tie, the breeder of horses placing 1st through 10th in the greatest number of classes will be the winner.

The ApHC does not accept responsibility for misprints in daily award tabulations. All information is not final until verified.

The following open classes will count toward the World Show Leading Breeder Award:

HALTER: O24, O27, O16, O17, O28, O18, O19, O29, O30, O31, O32, O33, O34, O35, O53, O54, O55, O56, O57, O58, O59, O73, O74, O75, O76, O77, O78, O86, O94, O95, O96.

PERFORMANCE: O141, O142, O161, O162, O181, O182, O220, O231, O232, O236, O237, O240, O250, O270, O280, O290, O300, O341, O342, O343, O361, O362, O381, O382, O393, O394, O401, O402, O421, O422, O423, O424, O426, O427, O430, O431, O432, O441, O442, O444, O445, O460, O500, O520, O523, O541, O542, O554, O555, O556, O557, O558, O559 and O600.

The Leading Breeder will receive an etched glass award to commemorate this achievement sponsored by the Appaloosa Horse Club.

KAREN GRIMM MEMORIAL OVERALL HIGH POINT EXHIBITOR

An award will be given to the overall high point exhibitor in open classes at the World Show. The exhibitor can show multiple horses. Only open classes count. Multiple placings may be earned by one exhibitor who is able to show more than one horse in classes in which this is allowed. In this case, all placings earned by the exhibitor will count toward the award.

Points will be awarded to the exhibitor for 1st through 10th place. First place will receive 11 points, 2nd place will receive 9 points, and so on down to 10th place which will receive 1 point unless otherwise specified. If there are less than 10 horses in a class, scores will be based on the number competing with the 1st place horse receiving one more point than the number of horses in the class, the 2nd place horse receiving 2 fewer points than the 1st place horse and the 3rd place horse receiving 1 less point than the 2nd place horse and so on down to last place which shall receive 1 point unless otherwise specified. The highest point-earning exhibitor based on performance in all open classes will be named the overall high point exhibitor.

In case of a tie, the award will be presented to the exhibitor who 1) competed in the greatest number of classes. If that fails to break the tie, the award will be presented to the exhibitor who 2) defeated the greatest number of entries.

NON-PRO SPECIAL AWARDS

Novice non-pro classes, 35 & over non-pro classes, masters non-

IRON HORSE RANCH

NON-PRO HALTER INCENTIVE

at the 2019 World Championship Show

All Non-Pro Halter classes with seven or more entries are eligible for part of

\$12,800.00 in total payouts

100 percent of the money paid to the exhibitors:

\$400 to 1st; \$300 to 2nd; \$100 to 7th, 8th, 9th or 10th

Eligible classes:



Non-Pro Halter Mares

N513 Weanling
N514 Yearling
N515 Two-Year-Old
N516 Three-Year-Old
N517 Aged

Non-Pro Halter Geldings

N523 Weanling
N524 Yearling
N525 Two-Year-Old
N526 Three-Year-Old
N527 Aged

Non-Pro Halter Stallions

N503 Weanling
N504 Yearling
N505 Two-Year-Old
N506 Three-Year-Old
N507 Aged



And Non-Pro Most Colorful At Halter

Sponsored by Iron Horse Ranch/Lonnie Ledbetter



Granbury, Texas

**see premium book for full details and to enter

pro classes, non-pro walk/trot classes and non-pro ranch conformation only count toward awards in those respective divisions. They do not count toward any other non-pro special awards.

Non-pro yearling longe line (western and hunter) and non-pro boxing do not count toward any special awards.

A non-pro may use more than one horse and all points will be combined, except where specifically stated.

ALL-AROUND NON-PRO

1. In order to compete for all-around honors, a contestant must compete in at least 3 performance events. They must also compete in 3 or more categories (halter is considered one category). Novice non-pro, 35 & over non-pro, masters non-pro and walk/trot non-pro classes don't count toward these awards.

2. The winner of the all-around is determined by adding the points earned by each contestant and his/her horse in every approved class in which he/she has placed in the top six. Points are compiled on a one horse-one exhibitor basis. A contestant may exhibit more than one horse; however, the points earned by the contestant with each will be compiled separately.

3. Scoring will be as follows: Contestant placing in the top six will be given a point for each exhibitor placing below them, plus one point, not to exceed six points for first place. Points are calculated through sixth place. Example: In a class of 6 or more horses, the first place contestant receives 6 points, second place gets 5 points; and so on through sixth place. In a class of 4 entries, the first place contestant receives 4 points, second gets 3 points, etc.

4. No points are awarded to a disqualified contestant, regardless of the number in the class. However, when less than 6 are placed, even though more than 6 entered in the class, points will be awarded on the basis of the number exhibited in the class.

5. In case a tie occurs, the contestant will be declared the All-Around who 1) placed 1st through 6th in the greater number of nationally pointed non-pro classes on one horse, 2) the contestant placing 1st through 6th winning over the greatest number of horses, 3) the contestant who earned the most points toward this award in performance classes.

Categories for tabulation of the All-Around non-pro are listed below and ONLY the following non-pro classes will count toward this award:

- I. Showmanship at Halter
- II. Bareback Horsemanship, Hunt Seat Equitation, Hunt Seat Equitation Over Fences, Saddle Seat Equitation, Western Horsemanship
- III. Camas Prairie Stump Race, Figure 8 Stake Race, Keyhole Race, Nez Perce Stake Race
- IV. Hunter Hack, Hunter Under Saddle, Pleasure Driving, Saddle Seat Pleasure, Trail, Western Pleasure, Western Riding, Working Hunter, Ranch Riding, Ranch Trail, Ranch Rail Pleasure
- V. Cutting, Breakaway Roping, Judged Tie-Down Roping, Judged Heading, Judged Heeling, Timed Tie-Down Roping, Timed Heading & Heeling, Reining, Ranch Reining, Working Cow Horse, Steer Daubing
- VI. Halter (all age divisions), Hunter In Hand (all sex divisions), Most Colorful At Halter

Champion All-Around Non-Pro will receive \$500 from the Appaloosa Horse Club, an Elite Custom Saddles trophy and a custom sterling silver Montana Silversmiths belt buckle and a three-horse gooseneck aluminum trailer with dressing room-one year's use compliments of Twin Cities South Trailer Sales LLC of Pilot Point, TX and Gary & Tammy Raak.

High-Point Non-Pro

All non-pro classes count toward this award except 35 & over, novice, masters, walk/trot non-pro classes, non-pro yearling longe line (western and hunter) and non-pro boxing.

Champion: \$250 from the Appaloosa Horse Club, an Elite Custom Saddles trophy saddle and a custom sterling silver Montana Silversmiths belt buckle.

Reserve Champion: A custom sterling silver Montana Silversmiths belt buckle.

High-Point 35 & Over Non-Pro

All 35 & over non-pro classes count toward this award.

Champion: Custom sterling silver Montana Silversmiths belt buckle.

Reserve Champion: Custom sterling silver Montana Silversmiths belt buckle.

High-Point Masters Non-Pro

All masters classes count toward this award. In classes in which a non-pro can ride more than one horse (western riding, trail, reining, cutting), only the non-pro's highest placing in each class will count toward the high-point award.

Champion: Custom sterling silver Montana Silversmiths belt buckle.

Reserve Champion: Custom sterling silver Montana Silversmiths belt buckle.

High-Point Novice Non-Pro

All novice non-pro classes count toward this award.

Champion: Custom sterling silver Montana Silversmiths belt buckle.

Reserve Champion: Custom sterling silver Montana Silversmiths belt buckle.

High-Point Walk/Trot Non-Pro

All walk/trot non-pro classes count toward this award.

Champion: Custom sterling silver Montana Silversmiths belt buckle.

Reserve Champion: Custom sterling silver Montana Silversmiths belt buckle.

Non-Pro Sportsmanship Award

Custom sterling silver Montana Silversmiths belt buckle.

Champion Non-Pro Games Horse

Classes that count are N270, N281, N290, N301. Calculation for this award is a one horse/one rider calculation.

Champion: Custom sterling silver Montana Silversmiths belt buckle

Champion Non-Pro Cattle Horse

Classes that count are N380, N390, N410, N420, N440, N450, N600, N610, N620.

Calculation for this award is a one horse/one rider calculation.

Champion: Custom sterling silver Montana Silversmiths belt buckle.

Champion Non-Pro Halter Exhibitor

Classes that count are N503, N504, N505, N506, N507, N513, N514, N515, N516, N517, N523, N524, N525, N526, N527, N540, N550, N560, N570. Calculation for this award is based upon the non-pro who may show multiple horses.

Champion: Custom sterling silver Montana Silversmiths belt buckle.



IMPROVING YOUR PERFORMANCE

- High quality stall mats for rent
- No hassle of hauling mats

Add Pro Plus+ to your order and have your stall disinfected and shavings spread before you arrive.

WWW.STALLMATRENTALS.COM

CALL 855-MATS-200



★★★★★ **ELITE** ★★★★★

Champion Non-Pro Western Exhibitor

Classes that count are N330, N340, N350 and N370. Calculation for this award is based upon the non-pro who may show multiple horses.

Champion: Custom sterling silver Montana Silversmiths belt buckle.

Champion Non-Pro Showmanship/ Equitation Exhibitor

Classes that count are N110, N140, N160, N310, N320, N360. Calculation for this award is based upon the non-pro who may show multiple horses.

Champion: Custom sterling silver Montana Silversmiths belt buckle.

Champion Non-Pro English Exhibitor

Classes that count are N120, N130, N150, N170, N190. Calculation for this award is based upon the non-pro who may show multiple horses.

Champion: Custom sterling silver Montana Silversmiths belt buckle and award from Schneider's Saddlery- the official English sponsor of the Appaloosa Horse Club.

Champion Non-Pro Ranch Horse

Classes that count are N650, N660, N670, N680, N690. Calculation for this award is a one horse/one rider calculation.

Champion: Custom sterling silver Montana Silversmiths belt buckle.

ELITE CUSTOM SADDLES HIGH-POINT AWARDS

Elite Custom Saddles will provide additional awards to twenty High-Point and Champion winners in the Open and Non-Pro categories. Thank you Elite Custom Saddles.

CLASS INFORMATION FREESTYLE REINING

See rule 716.F in the *Official Handbook of the ApHC* for current rules.

Exhibitors are required to submit the following items to the show office no later than noon, Wednesday, October 30.

1. List of props. Note: Props may not include open flames or live animals (except that additional horses may be allowed in the arena). Show management reserves the right to rule on props in addition to music and dress.

2. CD with contestant name, horse name and back number. CDs should only contain the musical track for the performance. Note: Exhibitors be aware that the audio equipment provided by WRMC may not play CDs produced on your computer. Music will be tested in advance of the performance if provided by the deadline. It is the responsibility of the exhibitor to have alternate music available should the CD submitted not play.

3. Opening script (optional)

4. Specific instructions concerning the script, music and lighting. Instructions should be explicit and simple.

5. Note: There are no spotlights available for the performance. There are two levels of house lights, either low or regular. Low house lights are allowed during set-up for each individual performance and during the first 15 seconds and last 15 seconds of any individual performance. At all other times, house lights must be on. When submitting your music and instructions, indicate light levels to be used during your performance.

Freestyle Reining Awards

\$5,000 added money will be paid out according to the following schedule: Champion-\$2,250, Reserve Champion- \$1,000, 3rd place-\$650, 4th place-\$450, 5th place-\$200. The Highest Placing Non-Pro will receive \$450 in addition to any other monies earned by placing in 1st through 5th place.

Note: In order to be eligible for non-pro awards, the exhibitor must be enrolled in the ApHC non-pro program and must meet all non-pro requirements (including ownership requirements) as outlined in the *Official Handbook of the ApHC*.

Freestyle Reining Payback

Payback: 100% of the entry fee will be paid back according to the following table:

	Entries			
Place	2-5	6-9	10-13	14-18
1st	60%	45%	40%	35%
2nd	40%	37%	30%	26%
3rd		18%	20%	19%
4th			10%	13%
5th				7%

HERITAGE

All entries for ladies' and men's heritage class must submit a type-written, double spaced description of their costume. This description must not be more than 200 words, written in third person and must be submitted to the show office by 6:00 p.m. the day prior to the class. The announcer will read the costume description for each entrant during the course of the class. The ApHC reserves the right to edit content. When the announcer has finished reading the description, each exhibitor will have one minute (this will be timed) to answer questions posed by the judges or to give additional information about their costume. At the expiration of the one-minute time limit, the judges will move on to the next exhibitor without delay.

NSBA DUAL-APPROVED CLASSES

Entry Fee - \$20. There is no post entry charged for NSBA entries.

The ApHC has entered into an agreement with the National Snaffle Bit Association (NSBA) to approve classes for NSBA points and awards. In order to compete for NSBA recognition, the owner and exhibitor of the horse must be NSBA members. These classes will run concurrently with regular ApHC classes. Those exhibitors who wish to compete for NSBA awards and points in the available classes must either complete the NSBA entry form available online, or check the NSBA box under each eligible class using the online entry system.

Owners and exhibitors competing for NSBA dual-approved recognition must provide proof of NSBA membership or purchase NSBA membership at the World Show upon checking in at the show office.

The ApHC will provide class results to NSBA for inclusion in NSBA standings. Those exhibitors receiving first place NSBA honors in these classes will also receive a NSBA trophy.

To purchase NSBA membership, contact the NSBA at 4203 Grove Avenue, Gurnee, IL 60031 (847) 623- 6722 or fax (847) 625-7435.

No refunds will be given for NSBA dual-approved class fees.

For a complete list of eligible classes, refer to the schedule in this premium book for classes designated as NSBA-dual approved.

TEAM ROPING

In non-pro judged heading and judged heeling classes, the non-



Custom Belt Buckles

Visit us on-line for
our entire selection of
ribbons, rosettes, awards
and gifts.



4" Sculpted Belt Buckle
(shown with enamel fill)
EBB000



4" Bright Nickel and Gold
Belt Buckle
EBB100



4" Die Cast Belt Buckle
(shown with enamel fill)
EBB200

Belt not included.



Your **FIRST PLACE**
for **AWARDS®**

888-565-7858
hodesbadge.com/equestrian

pro will be allowed to rope with any partner of their choosing. Non-pro ropers are not required to team rope with non-pro members. However, all partners must be members in good standing of the ApHC and must use horses regularly registered with the ApHC. Horses with an "N" certificate of registration that have not received a performance permit shall not be eligible to assist during the World Show.

YEARLING LONGE LINE

See the *Official Handbook of the ApHC* for complete rules. At the World Championship Appaloosa Show, each exhibitor may show a maximum of two horses in each longe line class. Four longe line classes are offered at the World Show including yearling longe line–western, yearling longe line–hunter, non-pro yearling longe line–western & non-pro yearling longe line–hunter.

MOST COLORFUL AT HALTER

Given in Memory of James H. Wild, 1st place will receive \$750, 2nd place will receive \$500 and 3rd place will receive \$250. The James H. Wild Memorial is sponsored by Flying W Appaloosa Ranch of Sarcoxie, MO.

WINDEMERE HUNTER CLASSIC

High-Point Classes & Calculations

(Round 1) Horses must show in O523 Pre-Green Hunter, O520 Green Hunter or O500 Working Hunter. Or the horse may be shown and count points in N170 Non-Pro Working Hunter but only if the horse is not being shown in any open working hunter class. These classes will be considered "Round 1" and each horse may earn points from one class in round 1 toward the overall high-point award standings. If a horse is shown in more than one open class in round 1, they will count points toward the award from the class in which they earned the highest number of points. (Example – if the horse places 1st of 3 horses in one class and earns 4 points and also places 5th in a class of 12 horses thereby earning 6 points, the horse will receive 6 points toward the high-point award in round 1) Horses shall only count points from non-pro working hunter toward the high-point award if they are not shown in any of the open classes listed above.

(Round 2) All horses competing for the Windemere Hunter Classic high-point award must enter O528 Windemere Hunter Classic in round 2. This is a working hunter class in which all horses compete against every other horse competing for the high-point award. Fence heights will vary in this class to allow for pre-green and green horses to maintain their class eligibility. The Pre-Green course will include fences ranging in height from 2'6" – 2'9". The Green course will include fences ranging in height from 2'9" – 3'0". The open course will include fences ranging in height from 3'0" – 3'3". The working order in the class will be determined by the fence height at which each horse jumps. Horses placing 1st through 10th in the Hunter Classic in round 2 will earn points toward the high-point award. This is a non-qualifying class and any horse may enter regardless of whether or not they competed in round 1.

Payback in this class will be according to Premium Payback rules contained in this premium book except that there will be no added money to the payback purse. Post entry fees apply to horses entered after the pre-entry deadline. All other rules contained in this premium book apply to entries in this class. Ribbons will be awarded through 10th place in this class.

(Round 3) All horses competing for the high-point award will compete in class O529 Windemere Hunter Under Saddle Classic. Horses will be shown at the walk, trot and canter both directions on the rail.

Judges may ask for variations of gaits including extended gaits and/or hand gallop. Judges will place this class as a rail class. Ribbons will be awarded through 10th place in this class. Horses placing 1st through 10th in the Hunter Under Saddle Classic in round 3 will earn points toward the high-point award. This is a non-qualifying class but is limited to horses that competed in the Hunter Classic class in round 2.

The entry fee for this class is \$60. Post entry fees will apply to those horses entered after the pre-entry deadline. \$45 from each entry fee paid into this class (or \$65 from each post entry fee) will be paid back to the overall top point-earning horses in the Windemere Hunter Classic High-Point Award calculation.

See AWARD CALCULATIONS & TIE-BREAKING PROCEDURES for information on how points are awarded in each class/round toward the high-point award standings.

Awards & Sponsors

Awards will be given to the top 10 point-earning horses based upon calculations from all three rounds.

Sponsorship money received prior to the World Show will be paid back to top point-earning horses in the high-point calculations. In addition, a portion of entry fees from round 3 will be added to the payback purse for the overall high-point winners.

Additional information on payback and awards will be available at the World Show as the breakdown is dependent upon the number of horses entered.

For information about the sponsors of the Windemere Hunter Classic, please see ad in *Appaloosa Journal*.

APPALOOSA FOUNDATION PAID PRACTICES

Pre-entry Fee: \$25 (post entry fee \$50 at the gate)

Paid practices for western pleasure and hunter under saddle will be offered during the show. A maximum of 24 entries will be accepted per class on a first-come basis as determined by postmark or online entry date. Training aids are allowed; however, inhumane equipment or treatment is prohibited in accordance with ApHC rules. All entry fees benefit the Appaloosa Foundation. No refunds will be given in these classes. The pre-entry fee must be paid by 5:00 p.m. the day prior to the class and those that are not pre-entered must pay \$50 at the gate in order to enter the class.

STALLION SERVICE AUCTION INCENTIVE CLASSES

Horses entering these classes must meet all Stallion Service Auction eligibility requirements. Horses may enter one or more classes (if eligible) to compete for incentive monies.

There is a \$150 pre-entry fee for each class with a post entry fee of 1.5 times the pre-entry fee (or \$225). Post entries must be received and paid for by 6 p.m. the day prior to the day each class is scheduled. **No refunds will be issued in Stallion Service Auction incentive classes.**

World Show trophies and ribbons will be presented in each class. Incentive payouts will be held pending notification of drug testing results.

Payouts will be issued according to the following scale.

*Best wishes to all exhibitors!
We enjoy serving you and appreciate your business!*

2019
WORLD
CHAMPIONSHIP APPALOOSA SHOW

ApHC World Championship Show
Official PHOTOGRAPHER

Larry Williams
 Photography & Design

Larry & Karen Williams

989-889-1771

LarryWilliamsPhotog.com

Championship Photography since 1992



scan with smart phone QR app.
Find your photos at LarryWilliamsPhotog.com

*Be sure to check out our amazing
multiple arena image discounts
with our sales associates
offered during the show*

Posed Photo Backdrop and Arena PROOFS located in Brown-Lupton North

PAYOUT SCHEDULE TWO-YEAR-OLD CLASSES

		1st	2nd	3rd	4th	5th	6th	7th
1		100%						
2-5	2	60%	40%					
6-9	3	45%	35%	20%				
10-13	4	40%	30%	20%	10%			
14-18	5	34%	27%	20%	10%	9%		
19-24	6	32%	22%	19%	10%	9%	8%	
25-28	7	28%	22%	17%	10%	9%	8%	6%

PAYOUT SCHEDULE - WEANLING CLASS

1		100					
2		60%	40				
3		49%	34%	17%			
4+		45%	30%	15%		10%	

CONTACT INFORMATION

Appaloosa Horse Club

2720 W Pullman Road
Moscow, ID 83843

(208) 882-5578 Phone

(208) 882-8150 Fax

www.appaloosa.com

Use the following address to ship prior to the show:

Will Rogers Memorial Center

c/o Appaloosa World Show

3401 West Lancaster Ave

Fort Worth, TX 76107

(817) 871-8150 Phone

(817) 871-8170 Fax

Use the following address to ship during the show:

Will Rogers Memorial Center

c/o Appaloosa World Show

1501 Rip Johnson Dr

Fort Worth, TX 76107



KELLY HERD
FINE JEWELRY SINCE 1983





LET US CUSTOMIZE
SOMETHING FOR YOU!



SHOP ONLINE
www.KellyHerdJewelry.com

GOLD • SILVER • CUSTOM DESIGN

CONTACT US
1-866-617-4653
KellyHerd@kellyherdjewelry.com

SHOW OFFICIALS

Chief Executive Officer	J. Lynette Thompson
Show Manager	Keri Minden-LeForce
Arena Manager	Jack Owen
Judges' Advisor	Joe Carter
Show Secretary / Judges' Coordinator	Debra Schnitzmeier
Awards Coordinator	Delaney Hood
Scoring	ApHC I.T. Staff
<i>Appaloosa Journal</i> Editor	Dana Russell
<i>Appaloosa Journal</i> Advertising Director	Hannah Cassara
Stall Manager	Alpha Russell
Assistant Stall Manager	Lissa Jones
Inspectors	Butch McGlothlin, Jerry Banks
Announcers	Dave Branham, Denny Oviatt
Drug Testing Veterinarian	Jeff Pollock, D.V.M

SHOW SERVICES

Show Veterinarian	Oklahoma City Equine Clinic
Emergency Medical Services	Elite Medical Team
Farrier	Kirk Knowlton
Photographer	Larry Williams Photography
Videographer	321 Action Video
Over Fence Courses Equipment & Design	Tucker Williams
Ranch Trail Course Design & Equipment	Chris Jeter
Trail Course Design	Robert Dehn

JUDGES

Bruce Army	Ohio City, OH
Darrell Bilke	Bethany, OK
Paul Filzen	Kimball, MN
Kelly Hedges	Perrysburg, NY
Mark McCarthy	Longmont, CO
Bonnie Miller	Lady Lake, FL
Michael Ochetto	Belcher, LA
Cynthia Rucker	Gainesville, GA
Michael Short	Shiner, TX
Teresa Sullivan	Bonney Lake, WA
David Terrell	Millington, TN

NCHA JUDGES

TO BE ANNOUNCED

EQUIPMENT JUDGES

Cindy Chilton-Moore	Broken Arrow, OK
Delena Doyle	Azle, TX
Sherry Haynes	Stephenville, TX
Kevin Jewell	Conyers, GA

RING STEWARDS

Cindy Dockter	Coleman, TX
Dee Dee Douglas	Owensville, MO
Debbie McMasters	Madison, TN
Ron McMillian	Collinsville, OK
Cheryl Ogle	Moscow, TN
John Tabb	Greenbriar, TN
Heather Young	Gainesville, TX

CAPTURE THE MOMENT



Action Video
professional video production
& webcasting

Official Videographer of the ApHC

Watch the Live Webcast

**Order Your HD Videos on
DVD or Digital Upload**

www.321actionvideo.com

2019 WORLD CHAMPIONSHIP APPALOOSA SHOW

Tentative Class Schedule

Wednesday, October 24

7:30 a.m. Horses/Exhibitors/Vendors Move In
7:30 a.m. – 24 hours Stall Office Open (Moncrief Building)

Thursday, October 25

24 hours Horses/Exhibitors Move In
8:00 a.m. – 6:00 p.m. Richardson-Bass Building Show Office Open
8:00 a.m. – 5:00 p.m. Burnett Building Inspection Station Open
8:00 a.m. – 24 hours W.R. Watt Arena Closed
9:00 a.m. – 24 hours Multi-Purpose Building At-Will Trail Practice
7:00 p.m. – 8:30 p.m. John Justin Arena Hunter Hack Practice

Friday, October 25

Proudly sponsored by France Appaloosas & ApHC Stallion, TELL ME IM HOT

8:00 a.m. – W.R. Watt Arena		Pre Entry	Equip/Cattle	Optional NSBA
C2	ApCHA Three-Year-Old Cutting Futurity, FIRST GO			
C4	ApCHA Five & Six-Year-Old Cutting Classic			
O141	Junior Cutting, ELIMINATIONS	140	185	
C10	ApCHA Masters Non-Pro Jane Norman Memorial Cutting			
O142	Senior Cutting, ELIMINATIONS	140	185	
C1	ApCHA Four-Year-Old Cutting Derby, FIRST GO			
N380	Non-Pro Cutting, ELIMINATIONS	140	185	
N389	Novice Non-Pro Cutting	105	140	
C15	ApCHA Ranch Cutting			

11:00 a.m.
USCHA Cutting

7:30 a.m. – John Justin Arena				
✓O385	Green Trail	140	40	20
✓O381	Junior Trail	140	40	20
✓O382	Senior Trail	140	40	20
RE-SET ARENA				
N560	Non-Pro Hunter in Hand Mares	140		
N570	Non-Pro Hunter in Hand Geldings	140		
N550	Non-Pro Hunter in Hand Stallions	140		
O162	Senior Working Cow Horse	140	70	
✓N129	Novice Non-Pro Hunter Under Saddle	105		20
✓O402	Senior Hunter Hack	140	20	20
N456	Non-Pro Boxing	140	70	
N119	Novice Non-Pro Hunt Seat Equitation	105		
✓O401	Junior Hunter Hack	140	20	20
✓N150	Non-Pro Hunter Hack	140	20	20

Multi-Purpose Building

3:00 p.m. – 24 hours
At-Will Trail Practice

Saturday, October 26

Proudly sponsored by Owatonna Motor Company

7:30 a.m. – W.R. Watt Arena	
C2	ApCHA Three-Year-Old Cutting Futurity, FINALS
C1	ApCHA Four-Year-Old Cutting Derby, FINALS
C5	ApCHA Non-Pro Bonanza
O142	Senior Cutting, FINALS
C3	ApCHA Limited Rider
O141	Junior Cutting, FINALS
N380	Non-Pro Cutting, FINALS
C7	ApCHA 7 & Up Cutting

GLENDA THE GOOD WITCH

Presents the 11th Annual

PUMPKIN DECORATING CONTEST



GREAT PRIZES IN
MULTIPLE
CATEGORIES:

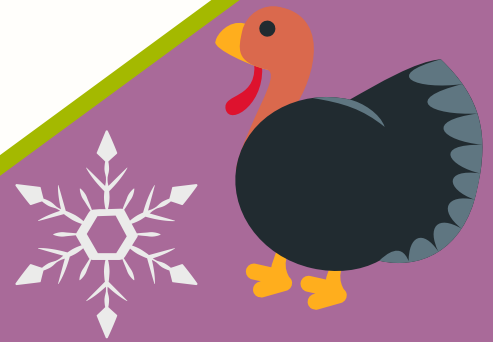
*Paint it! Carve it!
Decorate it!*



Return Pumpkins by
OCTOBER 31ST
at Noon for Judging



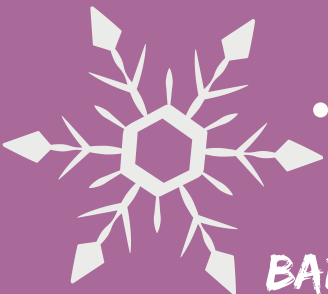
\$300 in Cash Prizes!
(must be 3 entries)



AND THIS YEAR...

**HOLIDAY-THEMED
STALL DECORATING
CONTEST!**

*Ghosts & Pumpkins,
Turkeys & Leaves,
Santa & Snow...
Up To You!*



.....
Listen for
BARN ANNOUNCEMENTS!

**Sign Up October 25th
at the Stall Office**

		Pre Entry	Equip/ Cattle	Optional NSBA
11:00 a.m.				
USCHA Cutting				
7:30 a.m. – John Justin Arena				
N357	Non-Pro Walk/Trot Trail	140	40	
✓N359	Novice Non-Pro Trail	105	40	20
✓N350	Non-Pro Trail	140	40	20
✓N358	Masters Non-Pro Trail	140	40	20
N355	Non-Pro 35 & Over Trail NEW	140	40	

RE-SET ARENA

✓O442	Senior Hunter Under Saddle	140		20
✓N339	Novice Non-Pro Western Pleasure	105		20
O161	Junior Working Cow Horse	140	70	
✓O361	Junior Western Riding	140		20
O342	Senior Reining	140		
✓O422	Senior Western Pleasure	140		20
N450	Non-Pro Working Cow Horse	140	70	

8:00 a.m. – Will Rogers Coliseum

H4	Appaloosa Halter Futurity Weanling Fillies, Non-Pro	
H3	Appaloosa Halter Futurity Weanling Colts & Geldings, Non-Pro	
H2	Appaloosa Halter Futurity Weanling Fillies, Open	
H1	Appaloosa Halter Futurity Weanling Colts & Geldings, Open	
H5	Appaloosa Halter Futurity Miniature Class	
H6	Appaloosa Halter Futurity Yearling Fillies, Non-Pro	
H7	Appaloosa Halter Futurity Yearling Colts & Geldings, Non-Pro	
O80	Stallion Service Auction Two-Year-Old Halter Incentive	150

3:00 – 5:00 p.m. – Show Office

Over Fences Paid Practice Sign-Up

Sunday, October 27

Proudly sponsored by Heather Runyon Show Horses & Wagon Road Farm

7:30 a.m. – West Sale Arena

Cowboy Church

7:30 a.m. – John Justin Arena

N127	Non-Pro Walk/Trot Hunter Under Saddle	140
N503	Non-Pro Weanling Colts	140
N504	Non-Pro Yearling Colts	140
N505	Non-Pro Two-Year-Old Stallions	140
N506	Non-Pro Three-Year-Old Stallions	140
N507	Non-Pro Aged Stallions	140
R4	ApRHA Open Derby	
N117	Non-Pro Walk/Trot Hunt Seat Equitation	105
N329	Novice Non-Pro Western Horsemanship	105
N370	Non-Pro Reining	140
N110	Non-Pro Hunt Seat Equitation	105

RE-SET ARENA

N440	Non-Pro Breakaway Roping	140	40
O181	Junior Judged Tie-Down Roping	140	40
O182	Senior Judged Tie-Down Roping	140	40
N600	Non-Pro Judged Tie-Down Roping	140	40
O220	Timed Tie-Down Roping, ELIMINATIONS	140	40
N410	Non-Pro Timed Tie-Down Roping, ELIMINATIONS	140	40
O220	Timed Tie-Down Roping	FINALS	
N410	Non-Pro Timed Tie-Down Roping	FINALS	

6:30 a.m. – Will Rogers Coliseum

ApHC Over Fences Paid Practice – Fences 2'6" – 2'9"

ApHC Over Fences Paid Practice – Fences 2'9" – 3'0"

ApHC Over Fences Paid Practice – Fences 3'0" – 3'3"/3'3"+

9:00 a.m.

O523	Pre-Green Hunter	140	40	
✓N170	Non-Pro Working Hunter	140	40	20
✓O520	Green Hunter	140	40	20
N160	Non-Pro Hunt Seat Equitation Over Fences	105	40	
✓O500	Working Hunter	140	40	20
O528	Windemere Hunter Classic	140	40	
O529	Windemere Hunter Under Saddle Classic	60		

AWARD Windemere Hunter Classic Top 10

AWARD High-Point Non-Pro Over Fences Horse

BEST *of the* WEST GIFT EXPO

October 25 – November 2, 2019



Commercial vendor information located at www.appaloosa.com
or contact the Marketing Department at (208) 882-5578 ext. 273
marketing@appaloosa.com

Pre Entry	Equip/ Cattle	Optional NSBA
--------------	------------------	------------------

AWARD High-Point Over Fences Horse

RE-SET ARENA

R15	ApRHA Three-Year-Old Ranch Riding Futurity		
R8	ApRHA Non-Pro Ranch Riding Maturity NEW		
N319	Novice Non-Pro Showmanship	105	

AWARD High-Point & Reserve Novice Non-Pro

N297	Non-Pro Walk/Trot Figure 8 Stake Race NEW	140	
N290	Non-Pro Figure 8 Stake Race	140	
O290	Figure 8 Stake Race	140	
N277	Non-Pro Walk/Trot Keyhole Race NEW	140	
N270	Non-Pro Keyhole Race	140	
O270	Keyhole Race	140	
O424	Ladies' Western Pleasure	140	

9:00 a.m. – W.R. Watt Arena

USCHA Cutting

ARENA CLOSED OVERNIGHT

PROGRESSIVE SOCIAL

COLISEUM ARENA

JOHN JUSTIN

BROWN LUPTON SOUTH

Hors' d oeuvres

Entrée

Dessert in the Shoppers' Showdown!

4:30 p.m.

6:00 p.m.

7:30 p.m.

Monday, October 28

Proudly sponsored by The Knight Family & Wild Gold Supplements

7:30 a.m. - John Justin Arena

O231	Junior Judged Heading	140	40
O232	Senior Judged Heading	140	40
N610	Non-Pro Judged Heading	140	40
O236	Junior Judged Heeling	140	40
O237	Senior Judged Heeling	140	40
N620	Non-Pro Judged Heeling	140	40
O240	Heading & Heeling, ELIMINATIONS	140	40
N390	Non-Pro Heading & Heeling, ELIMINATIONS	140	40
O240	Heading & Heeling	FINAL	
N390	Non-Pro Heading & Heeling	FINAL	
O250	Steer Daubing	140	40
N420	Non-Pro Steer Daubing	140	40

AWARD Champion & Reserve Cattle Horse

AWARD Champion Non-Pro Cattle Horse

RE-SET ARENA

✓N338	Masters Non-Pro Western Pleasure	140	20
✓O444	Three-Year-Old Snaffle Bit Hunter Under Saddle	140	20
O341	Junior Reining	140	
N328	Masters Non-Pro Western Horsemanship	105	
✓O421	Junior Western Pleasure	140	20

7:30 a.m. Will Rogers Coliseum

O085	Stallion Service Auction Weanling Halter Incentive	150	
N318	Masters Non-Pro Showmanship	105	
✓O432	Yearling Longe Line, Hunter	140	20
N315	35 & Over Non-Pro Showmanship	105	
O024	Hunter in Hand, Two & Older Stallions	140	
O018	Hunter in Hand, Two & Three-Year Old Geldings	140	
O029	Hunter in Hand, Yearling Geldings	140	
✓N120	Non-Pro Hunter Under Saddle	140	20
N337	Non-Pro Walk/Trot Western Pleasure	140	
✓O558	Junior Ranch Rail Pleasure	140	20
O300	Nez Perce Stake Race, ELIMINATIONS	140	
O300	Nez Perce Stake Race	FINAL	
N327	Non-Pro Walk/Trot Western Horsemanship	105	

Multi-Purpose Building

1:00 p.m. – 24 hours

At-Will Ranch Trail Practice

Tuesday, October 29

Proudly sponsored by Lori Conger

6:30 a.m. – John Justin Arena

F001	ApHCF English/Western Pleasure Paid Practice	25	
------	--	----	--

7:30 a.m.

O078	Performance Halter Geldings	140	
------	-----------------------------	-----	--

Make Sure to Enter The

DAILY GIVEAWAY

Each Day by 5pm in the ApHC Show Office!

Thank You to
The Wagner Family
for Donating These Exciting Items!

2019
WORLD
CHAMPIONSHIP APPALOOSA SHOW

**GOOD
LUCK!**



Prizes 1st & 2nd

Ladies & Mens Heritage Class

Chief Joseph Pendleton Canopy Canvas Tote
and Big Canvas Zip Pouch

Sponsored by Alpha Russell

2019
WORLD
CHAMPIONSHIP APPALOOSA SHOW



		Pre Entry	Equip/ Cattle	Optional NSBA
O059	Performance Halter Mares	140		
O035	Performance Halter Stallions	140		
N310	Non-Pro Showmanship	105		
✓O445	Two-Year-Old Snaffle Bit Hunter Under Saddle	140		20
N523	Non-Pro Weanling Geldings	140		
N524	Non-Pro Yearling Geldings	140		
N525	Non-Pro Two-Year-Old Geldings	140		
N526	Non-Pro Three-Year-Old Geldings	140		
N527	Non-Pro Aged Geldings	140		
N540	Non-Pro Most Colorful at Halter	140		
N335	35 & Over Non-Pro Western Pleasure	140		
O343	Hackamore/Snaffle Bit Reining	140		
✓N348	Masters Non-Pro Western Riding	140		20
✓O427	Three-Year-Old Snaffle Bit Western Pleasure	140		20
O541	Junior Ranch Reining NEW	140		
N325	35 & Over Non-Pro Western Horsemanship	105		
O542	Senior Ranch Reining NEW	140		
O423	Men's Western Pleasure	140		

8:00 a.m. - Will Rogers Coliseum

✓O556	Junior Ranch Trail	140	40	20
✓O557	Senior Ranch Trail	140	40	20
✓N670	Non-Pro Ranch Trail	140	40	20

RE-SET ARENA

N307	Non-Pro Walk/Trot Nez Perce Stake Race	140		
N301	Non-Pro Nez Perce Stake Race, ELIMINATIONS	140		
N301	Non-Pro Nez Perce Stake Race	FINAL		

Wednesday, October 30

Proudly sponsored by TE COOLEST

6:30 a.m. - John Justin Arena

F002	ApHCF English/Western Pleasure Paid Practice	25		
------	--	----	--	--

7:30 a.m.

N378	Masters Non-Pro Reining	140		
✓N128	Masters Non-Pro Hunter Under Saddle	140		20
N513	Non-Pro Weanling Fillies	140		
N514	Non-Pro Yearling Fillies	140		
N515	Non-Pro Two-Year-Old Mares	140		
N516	Non-Pro Three-Year-Old Mares	140		
N517	Non-Pro Aged Mares	140		
N118	Masters Non-Pro Hunt Seat Equitation	105		
O435	SSA Two-Year-Old Western Pleasure Incentive	150		
✓O365	Green Western Riding	140		20
O446	SSA Two-Year-Old Hunter Under Saddle Incentive	150		
✓O362	Senior Western Riding	140		20
✓340	Non-Pro Western Riding	140		20
AWARD High-Point & Reserve Masters Non-Pro				
✓O447	Green Hunter Under Saddle	140		20
✓O559	Senior Ranch Rail Pleasure	140		20
N125	35 & Over Non-Pro Hunter Under Saddle	140		
N690	Non-Pro Ranch Reining NEW	140		
N115	35 & Over Non-Pro Hunt Seat Equitation	105		

7:30 a.m. - Will Rogers Coliseum

N360	Non-Pro Bareback Horsemanship	105		
✓O554	Junior Ranch Riding	140		20
O019	Hunter in Hand, Four & Older Geldings	140		
✓N532	Non-Pro Yearling Longe Line, Hunter	140		20
✓N680	Non-Pro Ranch Riding	140		20
O280	Camas Prairie Stump Race Eliminations	140		
O280	Camas Prairie Stump Race	FINAL		

Thursday, October 31

Proudly sponsored by RNJ Cairo, LLC

6:30 a.m. - John Justin Arena

F003	ApHCF English/Western Pleasure Paid Practice	25		
------	--	----	--	--

7:30 a.m.

O030	Weanling Colts	140		
O031	Yearling Colts	140		
O032	Two-Year-Old Stallions	140		
O033	Three-Year-Old Stallions	140		



Congratulations **TOP 10**

**Celebrate your
success!**

25%
off

ad rates
in January
2020
Appaloosa
Journal

(208) 882-5578 ext. 256 – advertising@appaloosajournal.com

		Pre Entry	Equip/ Cattle	Optional NSBA
O034	Aged Stallions	140		
O094	Foundation Pedigree Designation Halter, Stallions	140		
✓O425	Green Western Pleasure	140		20
✓N330	Non-Pro Western Pleasure	140		20
AWARD	Champion Non-Pro Halter Exhibitor			
AWARD	High-Point & Reserve 35 & Over Non-Pro			
AWARD	Champion Non-Pro Western Exhibitor			
R5	ApRHA Non-Pro Reining Derby			
✓O441	Junior Hunter Under Saddle	140		20
N320	Non-Pro Western Horsemanship	105		
O460	Saddle Seat Pleasure	140		
✓O426	Two-Year-Old Snaffle Bit Western Pleasure	140		20
R7	ApRHA Non-Pro Reining Maturity			
✓P30	ApPHA Color World Series Two-Year Hunter Under Saddle			
✓P36	ApPHA Color World Series Non-Pro/Youth Senior Hunter Under Saddle			
R1	ApRHA Reining Futurity			
FREESTYLE REINING PRACTICE – CLOSED TO SPECTATORS				

7:30 a.m. – Will Rogers Coliseum

✓O431	Yearling Longe Line, Western	140		20
✓O555	Senior Ranch Riding	140		20
O027	Hunter in Hand, Yearling Colts	140		
O028	Hunter in Hand, Yearling Fillies	140		
N287	Non-Pro Walk/Trot Camas Prairie Stump Race NEW	140		
N281	Non-Pro Camas Prairie Stump Race ELIMINATIONS	140		
N281	Non-Pro Camas Prairie Stump Race	140		
		FINALS		

AWARD Champion Non-Pro Games Horse

Friday, November 1

Proudly sponsored by Plus One Performance Horses, Leslie Temple

6:30 a.m. – John Justin Arena

F004	ApHCF English/Western Pleasure Paid Practice	25		
------	--	----	--	--

7:30 a.m.

O053	Weanling Fillies	140		
O054	Yearling Fillies	140		
O055	Two-Year-Old Mares	140		
O056	Three-Year-Old Mares	140		
O057	Aged Mares	140		
O058	Broodmares	140		
O095	Foundation Pedigree Designation Halter, Mares	140		
O393	Men's Heritage	140		
✓N660	Non-Pro Ranch Rail Pleasure	140		20
N130	Non-Pro Saddle Seat Pleasure	140		
✓P31	ApPHA Color World Series Three-Year-Old Hunter Under Saddle			
N140	Non-Pro Saddle Seat Equitation	105		
✓P40	ApPHA Color World Series Two-Year-Old Hunter Under Saddle			
O600	Rope Race	140		
✓O430	Pleasure Driving	140		20
O086	Most Colorful at Halter	140		

AWARD High-Point & Reserve Walk/Trot Non-Pro

AWARD Champion Non-Pro Showmanship/Equitation Exhibitor

✓P45	ApPHA Color World Series Non-Pro/Youth Junior Western Pleasure			
O345	Freestyle Reining	140		
✓P41	ApPHA Color World Series Three-Year-Old Western Pleasure			

7:30 a.m. – Will Rogers Coliseum

G2	AGHA Nez Perce Stake Race, ELIMINATIONS			
G2	AGHA Nez Perce Stake Race, FINALS			
✓P20	ApPHA Color World Series Yearling Longeline, Hunter			
O016	Hunter in Hand, Two & Three Year Old Mares	140		
O017	Hunter in Hand, Four & Older Mares	140		
✓N531	Non-Pro Yearling Longe Line, Western	140	20	
N650	Non-Pro Ranch Horse Conformation	140		
O552	Open Ranch Horse Conformation	140		

AWARD High-Point & Reserve Ranch Horse

AWARD Champion Non-Pro Ranch Horse

Saturday, November 2

Proudly sponsored by Arturo Maestas Show Horses

6:30 a.m. – Will Rogers Coliseum

F005	ApHCF English/Western Pleasure Paid Practice	25		
------	--	----	--	--

You're Invited to the 2019 Progressive Social

Sunday, October 27th
Fort Worth, Texas

Hors d'oeuvres

4:30 p.m. - 6:00 p.m.

Will Rogers Coliseum Arena

Sponsored by Sue Scobee

Entrée

6:00 p.m. - 7:30 p.m.

John Justin Arena

Sponsored by Maestas Show Horses

Dessert in the

Shopper's Showdown

7:30 p.m. - 9:00 p.m.

Brown Lupton South

FOR ALL YOUR EQUINE MARKETINGS NEEDS



EQUINE MARKETING INC.

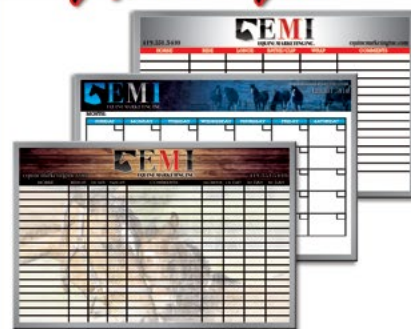
[Equine Marketing Inc. has helped meet the needs of many customers looking for equine marketing. What makes us unique from other marketing businesses is our vast knowledge and passion for the equine industry. We value and treat everyone with the utmost respect. Our goal is to help you with your marketing needs while developing a long and trusting relationship.]

Mariah Peake 419.351.5410

equinemarketinginc.com

[f equinemarketinginc](https://www.facebook.com/equinemarketinginc)

Pro Horse Boards



Stall Name Plates



Stall Cards



Logo Design



		Pre Entry	Equip/ Cattle	Optional NSBA
7:30 a.m.				
G1	AGHA Camas Prairie Stump Race, ELIMINATIONS			
G1	AGHA Camas Prairie Stump Race, FINALS			
✓N190	Non-Pro Pleasure Driving	140	20	
O394	Ladies' Heritage	140		
O073	Weanling Geldings	140		
O074	Yearling Geldings	140		
O075	Two-Year-Old Geldings	140		
O076	Three-Year-Old Geldings	140		
O077	Aged Geldings	140		
O096	Foundation Pedigree Designation Halter, Geldings	140		
✓P46	ApPHA Color World Series Non-Pro/Youth Senior Western Pleasure			
✓P21	ApPHA Color World Series Yearling Longe Line, Western			
✓P35	ApPHA Color World Series Non-Pro/Youth Junior Hunter Under Saddle			
AWARD	Champion & Reserve Western Horse			
AWARD	Champion & Reserve English Horse			
AWARD	Champion Non-Pro English Exhibitor			
AWARD	High-Point & Reserve Non-Pro			
AWARD	Overall High-Point Exhibitor			
AWARD	Open Sportsmanship Award			
AWARD	Non-Pro Sportsmanship Award			
AWARD	All-Around Non-Pro			
AWARD	World Show Leading Breeder			
AWARD	World's Best & Reserve World's Best Appaloosa			

Thank You
Wagner
Family



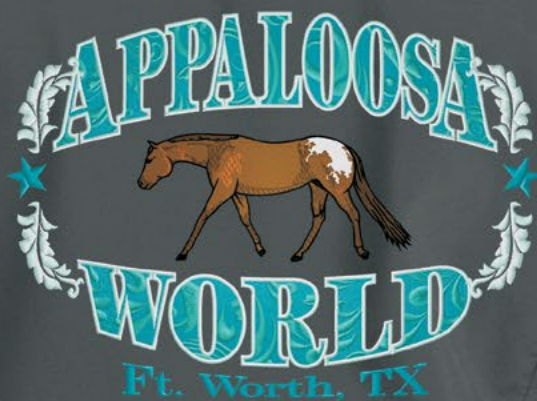
Saddle Sponsor

2019
WORLD
CHAMPIONSHIP APPALOOSA SHOW

**All-Around
Non-Pro**



Appaloosa PRO★COLLECTION *by Tioga Territory*



www.tiogaterritory.com
1-800-279-3052



502 East Main St.
Chanute, KS 66720